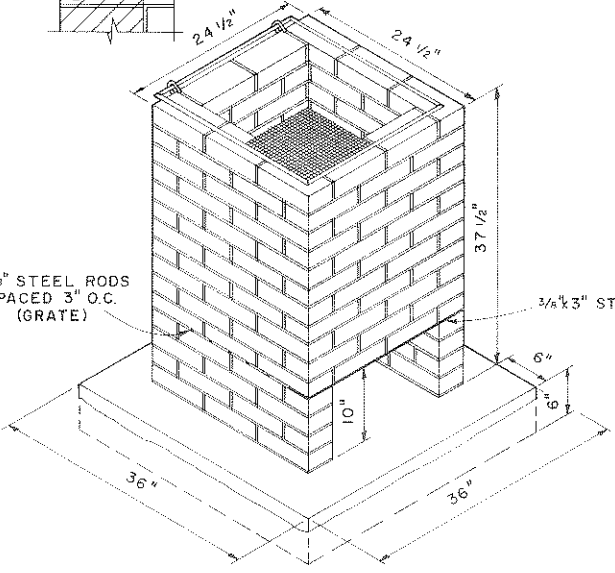
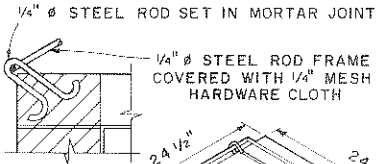
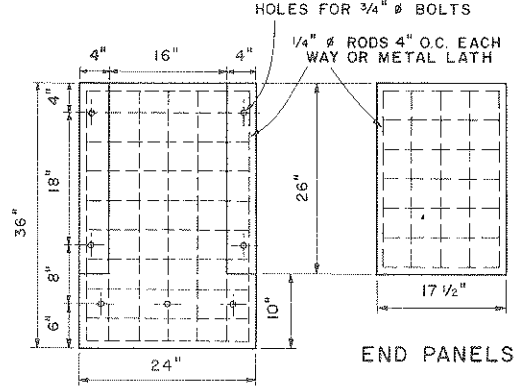


CONCRETE TRASH BURNER
NOT TO SCALE

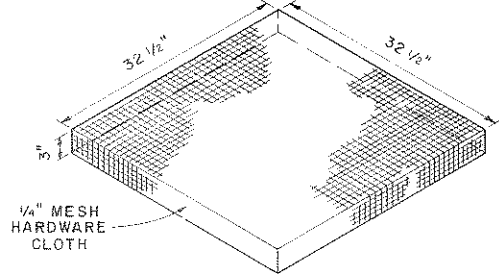


BRICK TRASH BURNER



SIDE PANELS

END PANELS

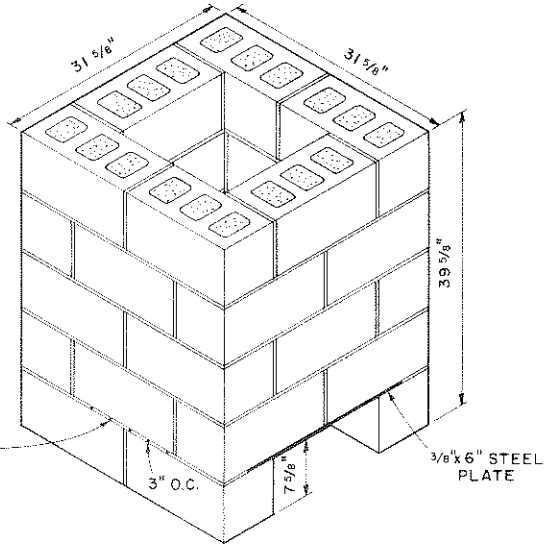


REMOVABLE COVER

BILL OF MATERIALS

- 29 CONCRETE BLOCKS 7 5/8" x 7 5/8" x 15 5/8"
- 1 SACK MASONRY CEMENT
- 3 CU. FT. SAND
- 1 PC. 3/8" x 6" x 24" STEEL PLATE
- 5 PCS. 3/8" Ø STEEL RODS 31 5/8" LG. (GRATE)
- 1 PC. 1/4" MESH HARDWARE CLOTH 39" SQUARE

NOTE:
3/8" MORTAR JOINTS.
VOIDS IN TOP COURSE OF BLOCK TO BE FILLED WITH MORTAR.



BLOCK TRASH BURNER

BILL OF MATERIALS

- FOR BASE:
 - 1 SACK PORTLAND CEMENT
 - 2 CU. FT. SAND
 - 3 CU. FT. GRAVEL
 - 6 GALLONS WATER
- FOR TRASH BURNER:
 - 150 COMMON RED BRICK (NEW OR USED)
 - 1 SACK MASONRY CEMENT
 - 3 CU. FT. SAND
 - 1 PC. 3/8" x 3" STEEL PLATE 24" LG.
 - 5 PCS. 3/8" Ø STEEL ROD 24" LG. (GRATE)
 - 1 PC. 1/4" Ø STEEL ROD 9' LG.
 - 1 PC. 1/4" MESH HARDWARE CLOTH 24" SQUARE
- HARDWARE:

BILL OF MATERIALS

- CONCRETE: 1:2:3 MIX
 - 1 SACK OF CEMENT
 - 2 CU. FT. OF SAND
 - 3 CU. FT. OF GRAVEL
- REINFORCEMENT STEEL:
 - 14 - 1/4" RODS 34" LG.
 - 10 - 1/4" RODS 24" LG.
 - 20 - 1/4" RODS 22" LG.
 - 14 - 1/4" RODS 15 1/2" LG.
 - 7 - 1/4" Ø 22 1/2" LG. (WITH NUTS & 2" WASHERS)
- BOLTS:
- GRATE:
 - 1 - PIECE OF EXPANDED METAL 16" x 24"

NOTE:
THE CONCRETE SHOULD BE MIXED: 1 PART PORTLAND CEMENT, 2 PARTS SAND AND 3 PARTS GRAVEL. IF THE GRAVEL IS OF SUCH A CHARACTER AS TO BE DISINTEGRATED BY HEAT, IT WILL BE BEST TO USE BROKEN BRICK OR TERRA COTTA IN PARTICLES FROM 1/4" TO 1/2" IN SIZE.
AFTER THE SLABS HAVE BEEN MADE THEY SHOULD BE COVERED, AS SOON AS THERE IS NO DANGER OF MARRING THEM, WITH MOIST STRAW, SACKS, OR EARTH AND LEFT FOR 2 TO 3 WEEKS TO THOROUGHLY AND SLOWLY HARDEN.



COOPERATIVE EXTENSION WORK IN
AGRICULTURE AND HOME ECONOMICS

AND
UNITED STATES DEPARTMENT OF AGRICULTURE COOPERATING

TRASH BURNERS
3 TYPES

USDA	'76	6260	SHEET 1 OF 1
------	-----	------	--------------

BASED ON: USDA PLAN NO. 5164
TEXAS A & M UNIV. PLAN NO. 209