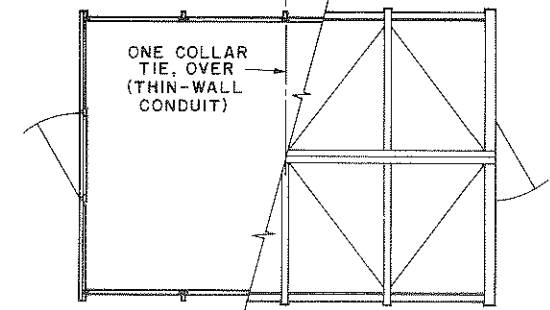
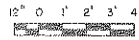
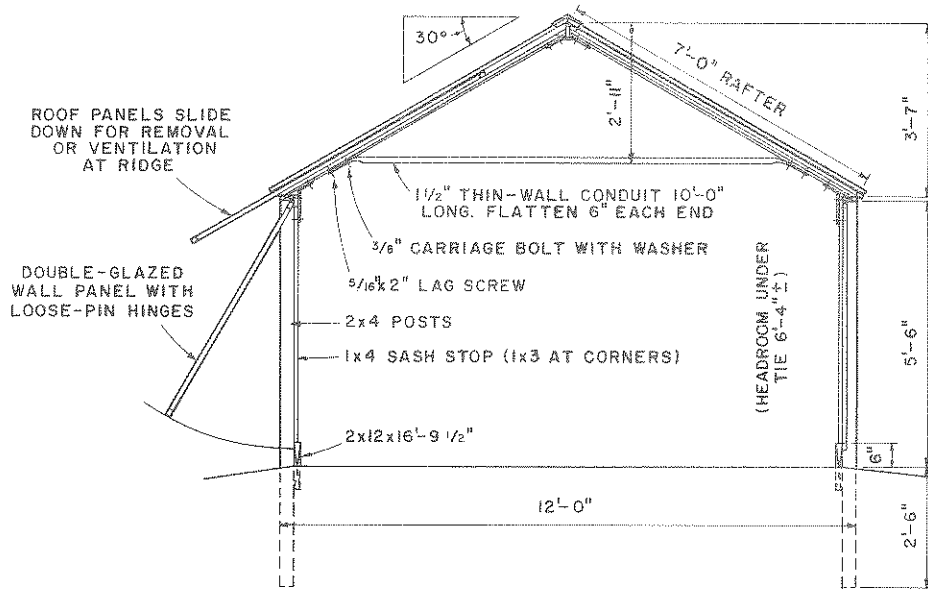


NO. 9 GALVANIZED WIRE TIES, TWISTED

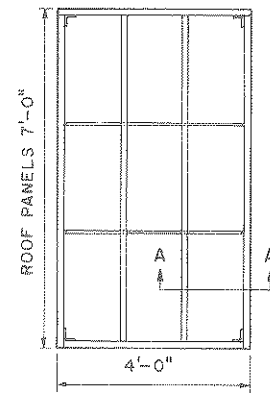
FRAMING ELEVATIONS



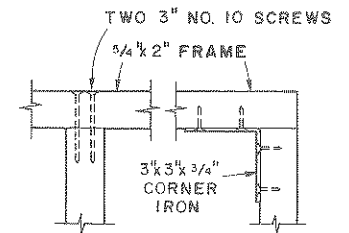
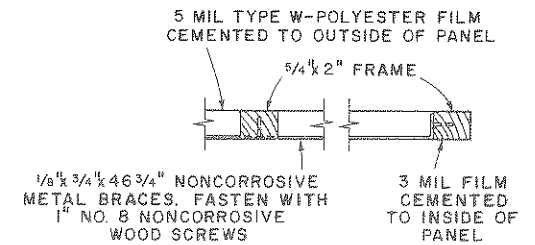
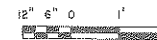
FRAMING PLAN



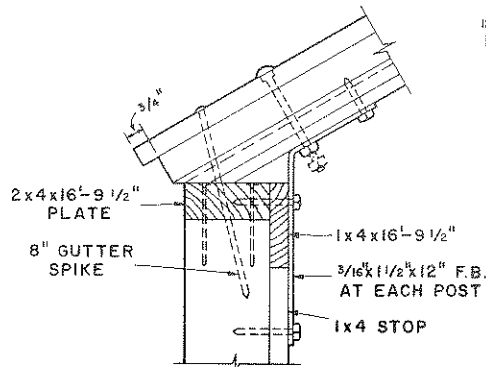
CROSS SECTION



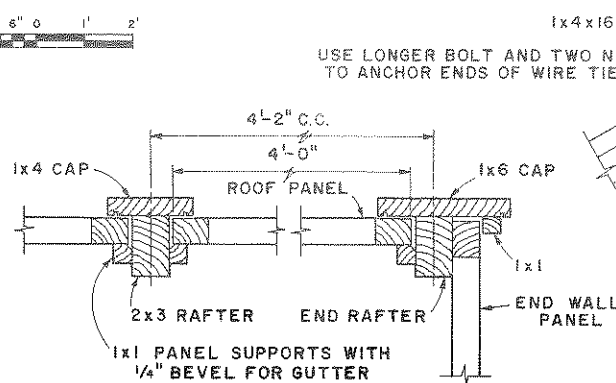
ROOF SASH PANEL



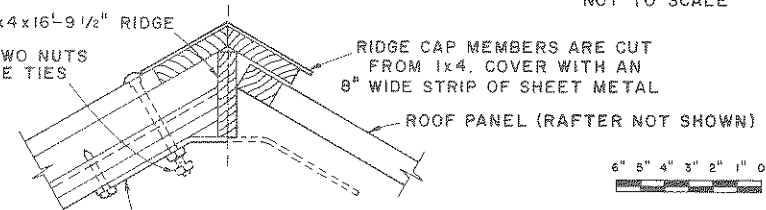
SECTION A-A
NOT TO SCALE



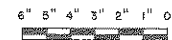
EAVE CONNECTIONS



RAFTER DETAILS



RIDGE DETAIL



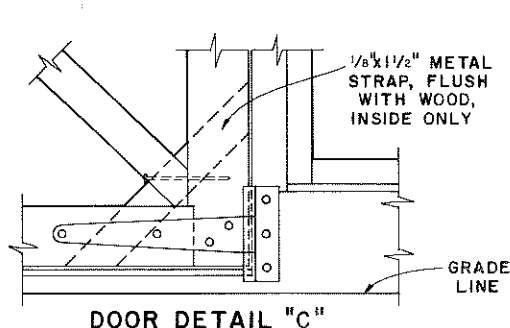
NOTE:
CONSULT LOCAL HEALTH AND BUILDING CODE AUTHORITIES BEFORE STARTING CONSTRUCTION.

COOPERATIVE EXTENSION WORK IN AGRICULTURE AND HOME ECONOMICS

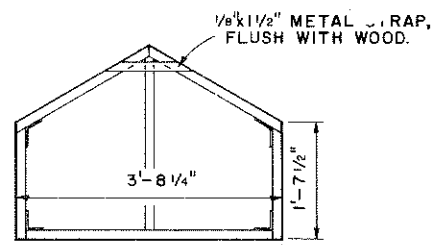
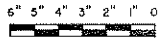
AND UNITED STATES DEPARTMENT OF AGRICULTURE COOPERATING

PLASTIC GREENHOUSE

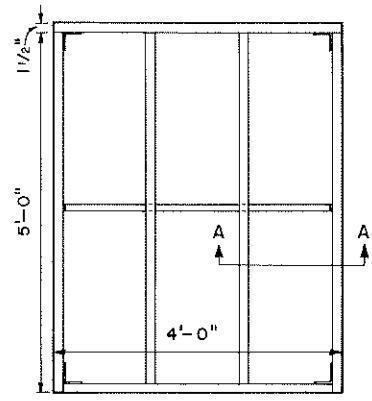
USDA '76 6251 SHEET 1 OF 2



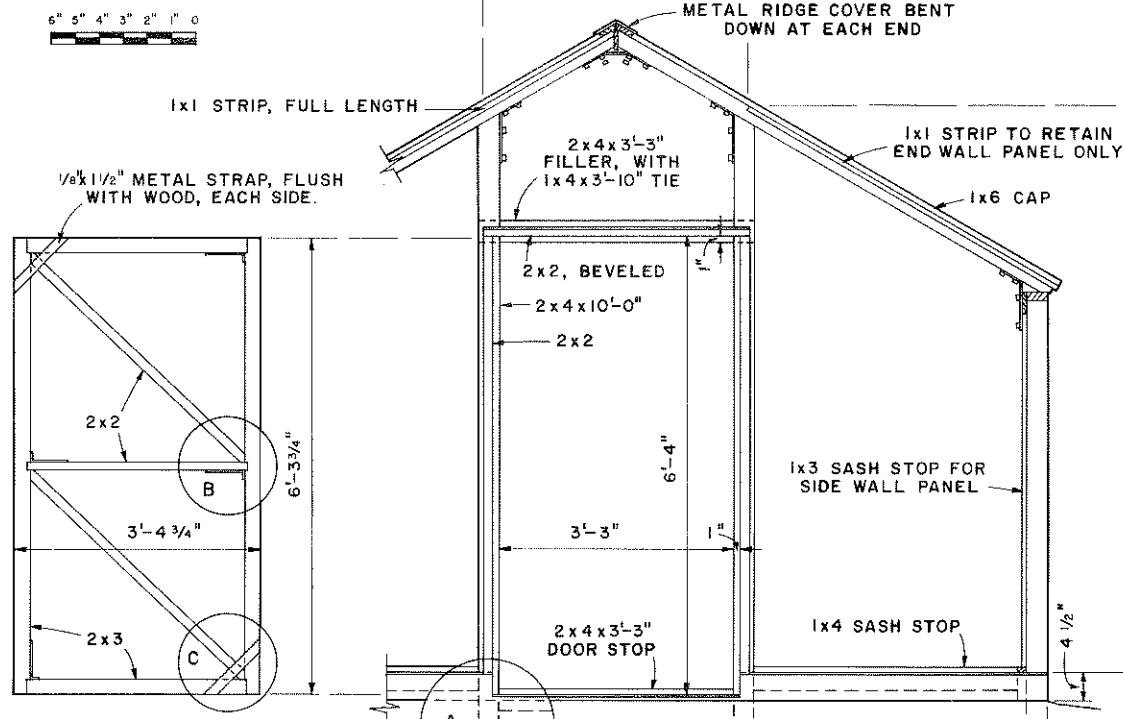
DOOR DETAIL "C"



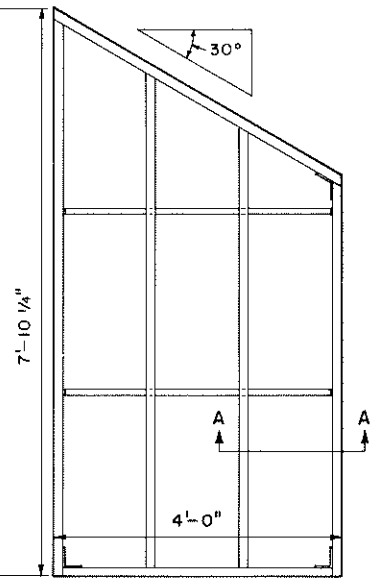
GABLE SASH PANEL
TWO REQ'D



SIDE WALL SASH PANEL
EIGHT REQ'D



END WALL FRAMING

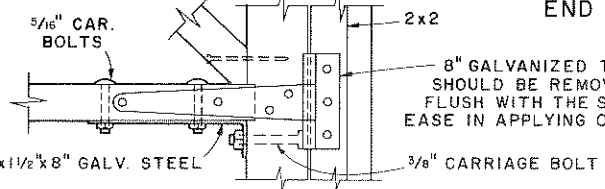


END WALL SASH PANEL
FOUR REQ'D, TWO RIGHT & TWO LEFT

NOTES:
THE ROOF PANELS ARE HELD IN CLOSED OR PARTLY OPEN POSITIONS BY 6d DOUBLE-HEADED NAILS IN HOLES DRILLED THROUGH LOWER END OF RAFTER CAP INTO PANEL FRAME.
INSTALL RESILIENT WEATHER STRIPPING TO CLOSE THE SPACE BETWEEN THE PLATES AND ROOF PANELS.
ALL WOOD PARTS TO BE TREATED, AFTER CUTTING, WITH A COPPER-NAPHTHENE PRESERVATIVE.
ALL METAL PARTS SHOULD BE OF NON-CORROSIVE METAL OR HOT-DIP GALVANIZED STEEL.

APPLY FILM TO INSIDE FIRST. OUTER FILM SHALL EXTEND OVER TOP RAIL AND LAP THE TOP EDGE OF THE INNER FILM.

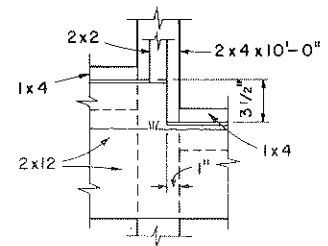
DOOR PANEL
TWO REQ'D



DOOR DETAIL "B"



2x12 x 12'-0" NOTCHED 3 1/2 x 3'-5" FOR DOOR. BEVEL TOP EDGE FOR DRAINAGE.



SILL DETAIL "A"

