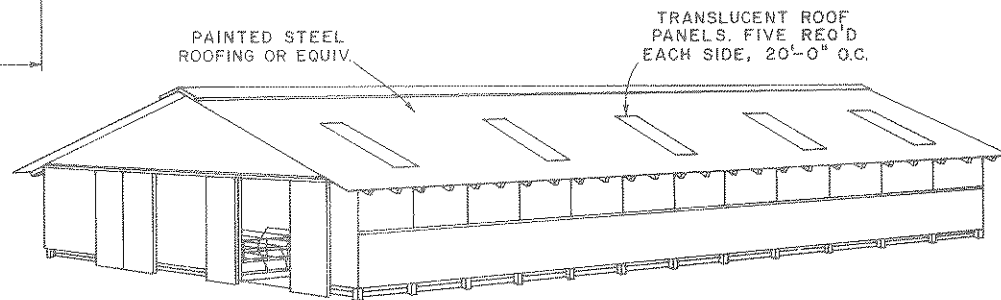


PLAN

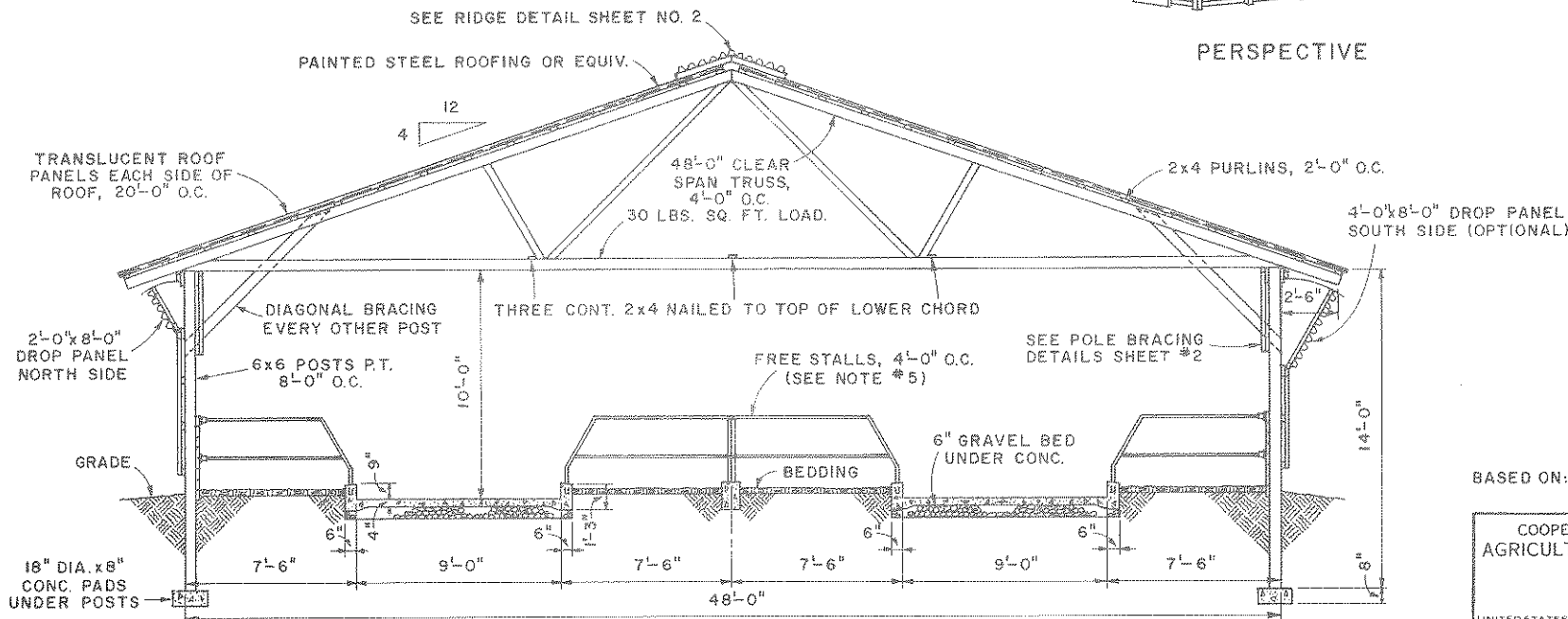


NOTES:

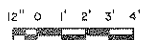
- 1-CONSULT LOCAL BUILDING CODE AND HEALTH AUTHORITIES BEFORE STARTING CONSTRUCTION.
- 2-CONCRETE TO BE 3000 PSI AIR-ENTRAINED MIX.
- 3-PRESSURE TREATED MATERIAL (P.T.) SHALL BE TREATED TO A PRESERVATIVE RETENTION OF 5-7 POUNDS PER CUBIC FOOT AS PER A.W.P.A. STANDARDS.
- 4-ROOF LOAD (DEAD & LIVE) EQUALS 30 LBS./SQ. FT. CEILING LOAD-NONE REQUIRED.
- 5-CONSULT WITH COW STALL MANUFACTURER PRIOR TO POURING CONCRETE FLOOR AND CURBING.
- 6-USE TRUSSES BY REPUTABLE MANUFACTURER DESIGNED FOR 30 LBS. PER SQ. FT. (DEAD AND LIVE LOAD).



PERSPECTIVE



CROSS SECTION



NOTE:

CONSULT LOCAL HEALTH AND BUILDING CODE AUTHORITIES BEFORE STARTING CONSTRUCTION.

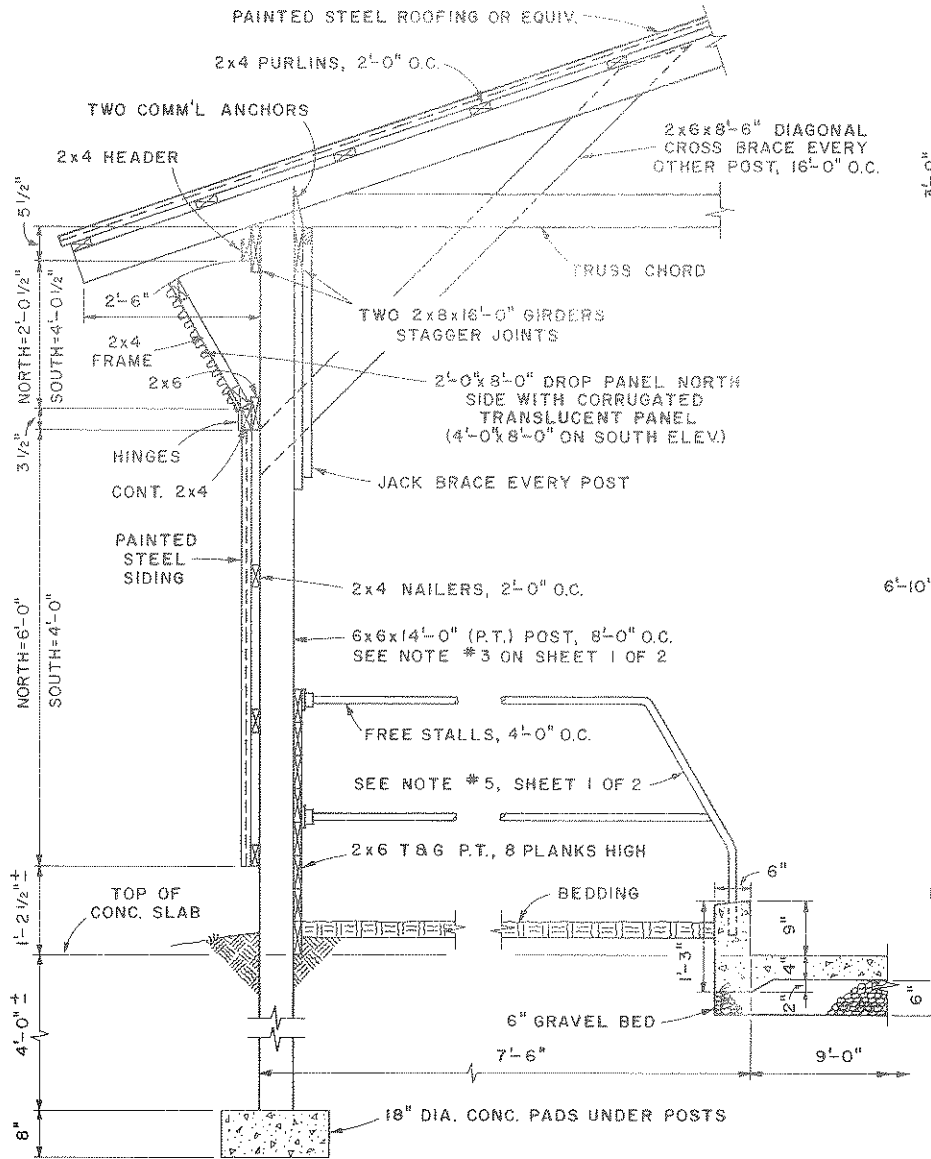
BASED ON: RUTGERS-THE STATE UNIV. PLAN NO. 156

COOPERATIVE EXTENSION WORK IN AGRICULTURE AND HOME ECONOMICS

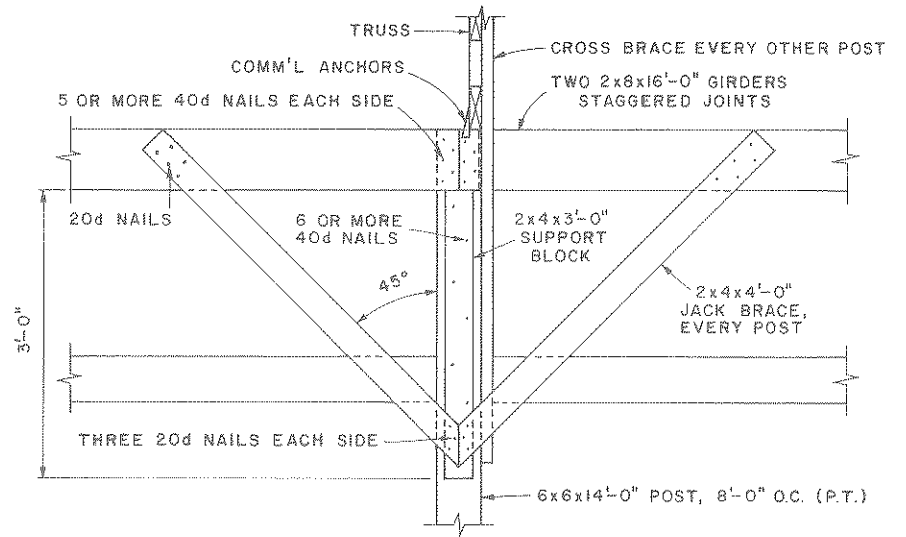
AND UNITED STATES DEPARTMENT OF AGRICULTURE COOPERATING

FREE STALL BARN

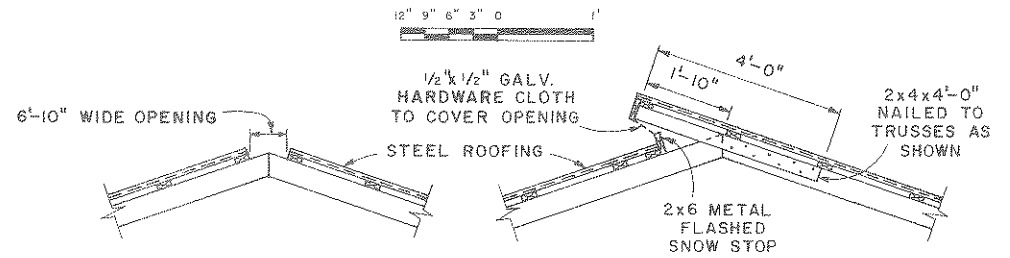
N.J. '76 6250 SHEET 1 OF 2



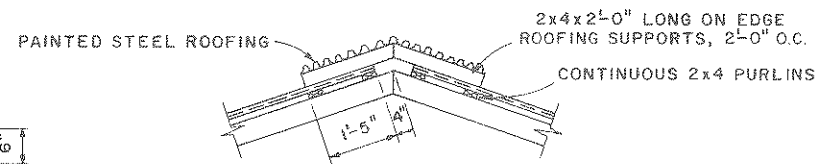
TYPICAL WALL SECTION



POLE BRACING DETAILS



ALTERNATE RIDGE DETAILS



RIDGE DETAIL

COOPERATIVE EXTENSION WORK IN
AGRICULTURE AND HOME ECONOMICS

AND
UNITED STATES DEPARTMENT OF AGRICULTURE COOPERATING

FREE-STALL BARN

N.J. '76 6250 SHEET 2 OF 2