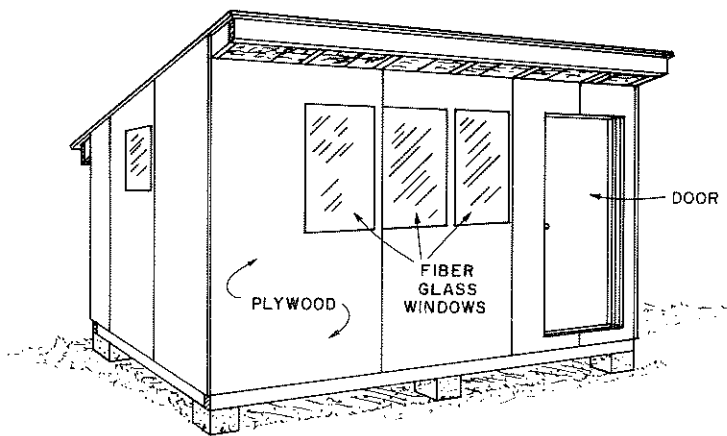


FLOOR PLAN

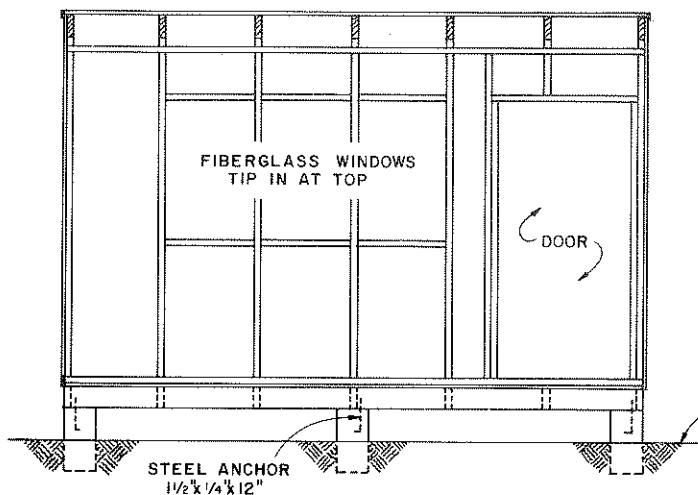


PERSPECTIVE

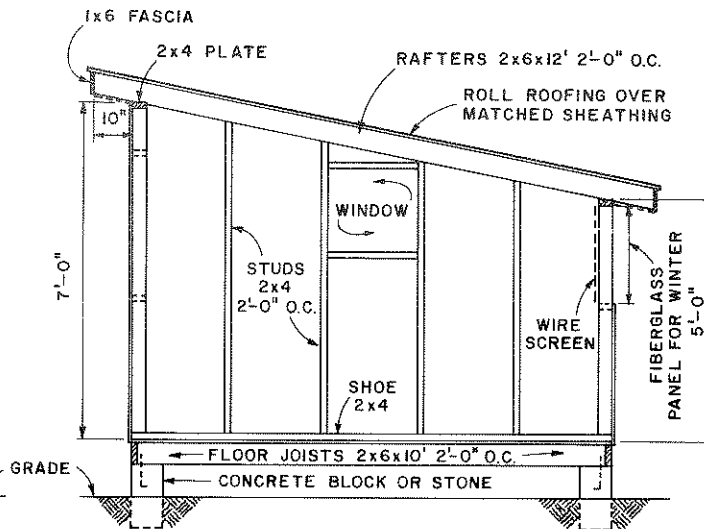
NOTE:  
CONSULT LOCAL HEALTH AND BUILDING CODE  
AUTHORITIES BEFORE STARTING CONSTRUCTION

BILL OF MATERIALS

FOUNDATION	12 CONC. BLOCKS 8"x8"x16"
FLOOR JOISTS	7-PC. 2x6x10'
FR. & REAR SILLS	2-PC. 2x6x12'
FLOOR	150 BD. FT. T. & G.
	SHEATHING
SHOE	54 LIN. FT. 2x4
STUDS: REAR	9-PC. 2x4x5'
FRONT	9-PC. 2x4x7'
ENDS	8-PC. 2x4x12'
PARTITIONS	2-PC. 2x4x12'
PLATES	2-PC. 2x4x12'
ROOF	175 BD. FT. T. & G.
	SHEATHING
	1/2 SQS. ROLL ROOFING
SIDING & DOORS	11 SHEETS 4"x8"x1/2" EXT. PLYWOOD
WINDOWS	2-PC. 2x10' FIBERGLASS (FLAT)
	4-PC. 2x4x12'
MISCL. FRAMING	
NAILS & HARDWARE	
RAFTERS	7-PC. 2x6x12'
ANCHORS-STEEL	6-PC. 1/2"x1/4"x12"
FASCIA	2-PC. 1x6x12'
DOOR STOPS	2-PC. 1x2x12' 1-PC. 1x2x6'



FRONT ELEVATION FRAMING



SIDE ELEVATION FRAMING

COOPERATIVE EXTENSION WORK IN  
AGRICULTURE AND HOME ECONOMICS

AND  
UNITED STATES DEPARTMENT OF AGRICULTURE COOPERATING

POULTRY HOUSE 10'x12'

N.H. '76 6248 SHEET 1 OF 1