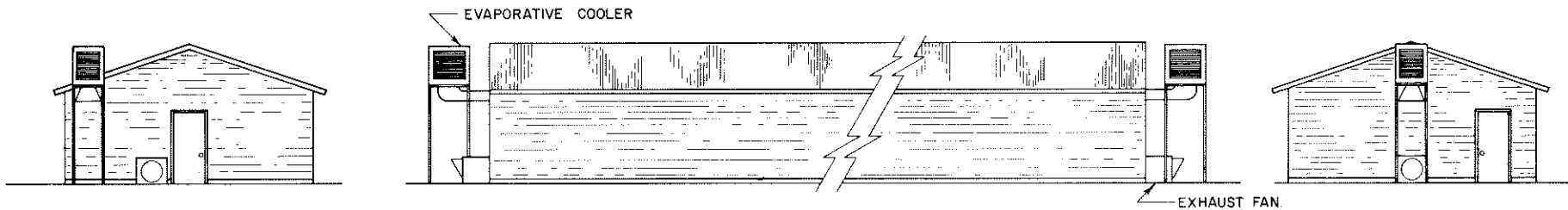
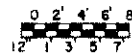
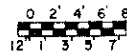


FLOOR PLAN



ELEVATIONS



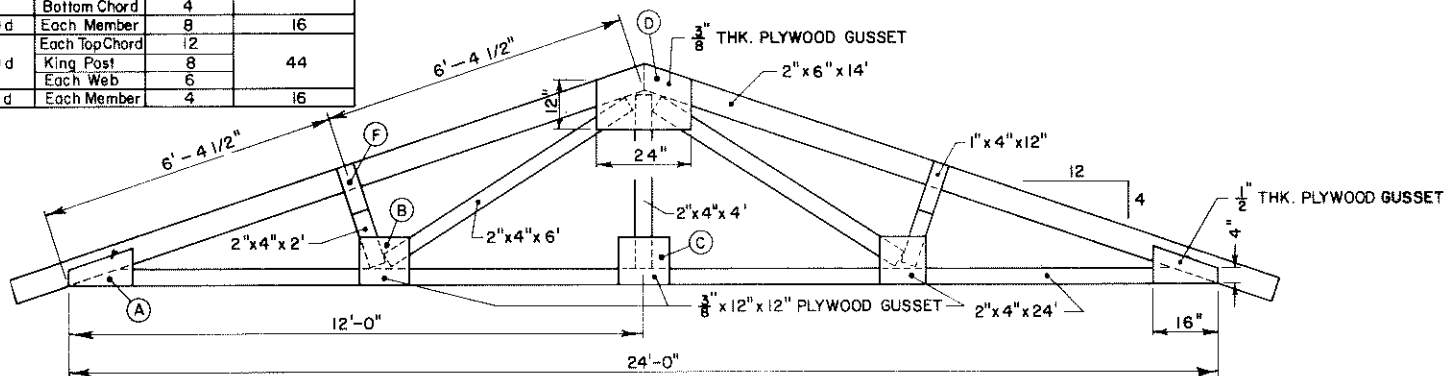
NOTE:

When Building Or Enlarging A Confinement Swine System You Are Encouraged To Employ A Registered Consulting Agricultural Engineer. The Engineering Consultant Will Be Concerned With Providing The Best System Designed For Your Specific Needs.

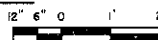
TRUSS NOTES:

1. Pre-Fabricated Trusses With Metal Press-Plate Connectors May Be Used.
2. Apply Gussets On Both Sides Of Joint Except On End Trusses.
3. Drive One Half Of All Nails Listed From Each Side Of Joint.
4. Use Deformed-Shank High-Carbon Steel Nails.
5. Use Exterior-Grade C-C Plywood For Gussets.

JOINT	NAIL SIZE	MEMBER	NO. REQ'D	NO. PER TRUSS
A	12 d	Each Member	14	56
		Long Web	6	
B	10 d	Short Web	4	28
		Bottom Chord	4	
		Each Member	8	16
D	10 d	Each Top Chord	12	
		King Post	8	44
		Each Web	6	
F	12 d	Each Member	4	16



NAILED TRUSS DETAILS

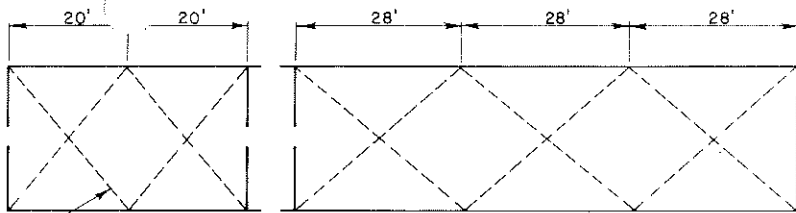


NOTE:

CONSULT LOCAL HEALTH AND BUILDING CODE AUTHORITIES BEFORE STARTING CONSTRUCTION

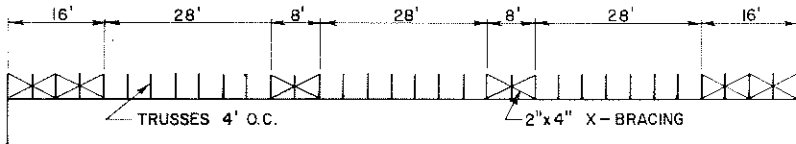
BASED ON: OKLA. STATE UNIV.
PLAN NO. OK-726-24

COOPERATIVE EXTENSION WORK IN AGRICULTURE AND HOME ECONOMICS		
AND UNITED STATES DEPARTMENT OF AGRICULTURE COOPERATING		
FARROWING HOUSE FOR 30 SOWS		
OK.	'76	6247
		SHEET 1 OF 5



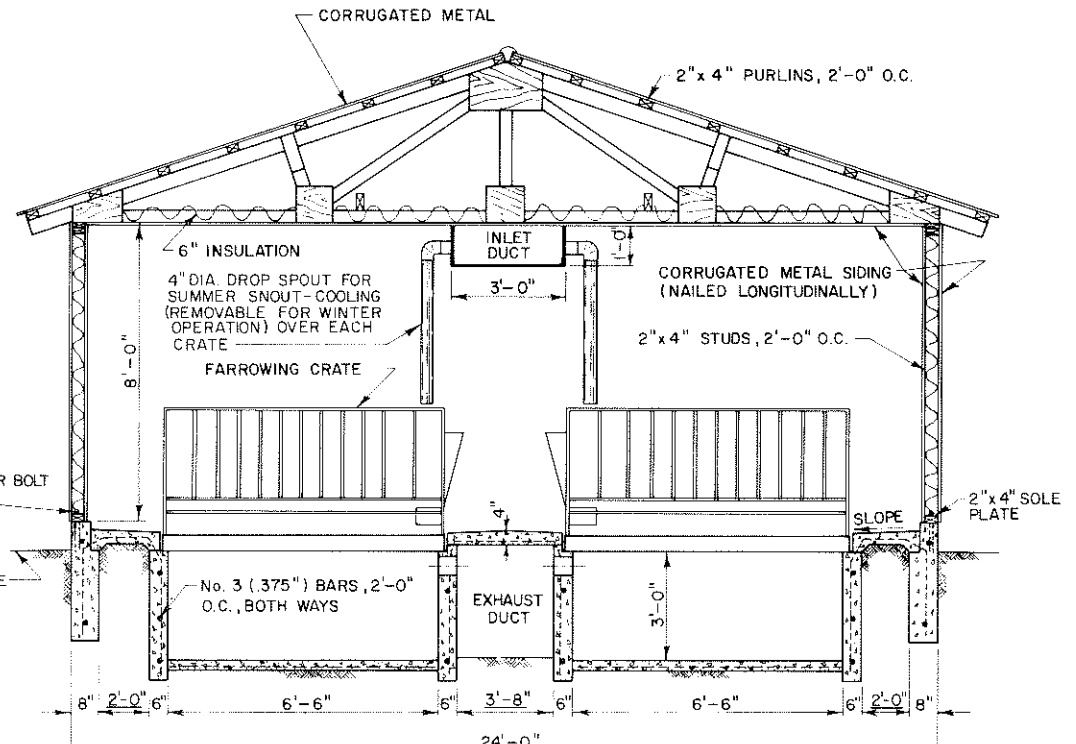
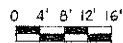
1" WIDE "BANDING STRAP", SEE DETAIL THIS SHEET

PLAN VIEW



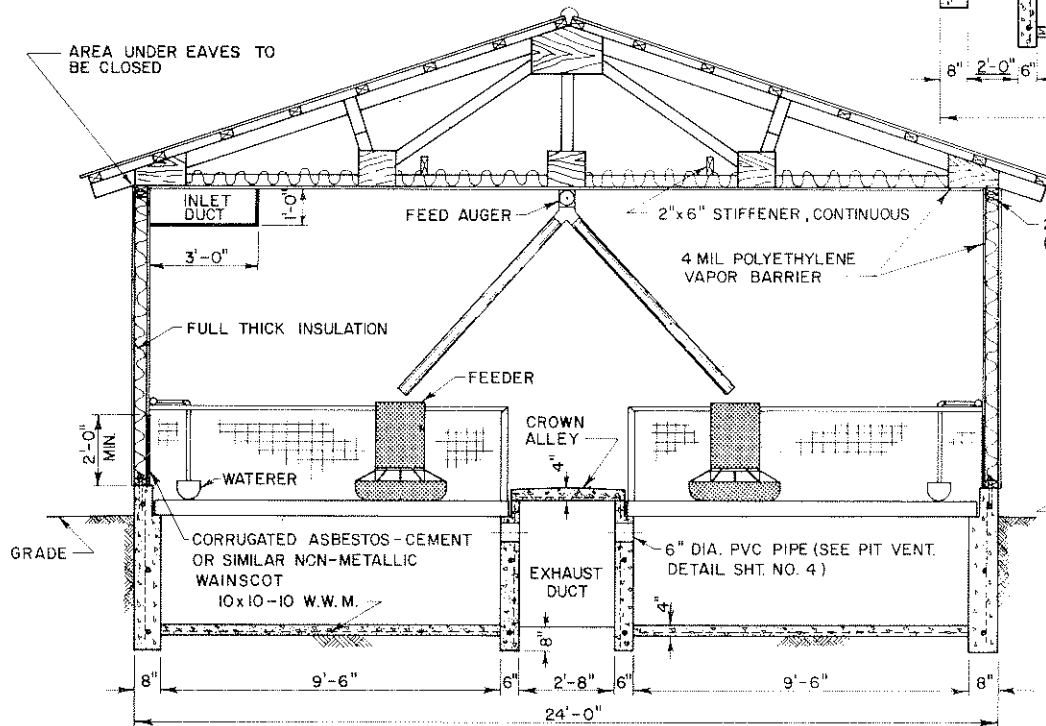
ELEVATION

CROSS BRACING DETAILS

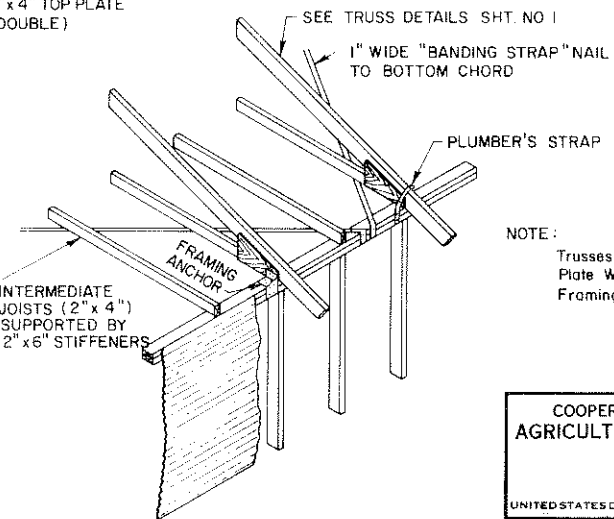
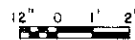


SECTION B-B

NOTE: DIMENSIONS UNDERSCORED THUS: 2'-0" INDICATES DRAWING IS NOT TO SCALE.



SECTION C-C



TRUSS ANCHORAGE DETAIL

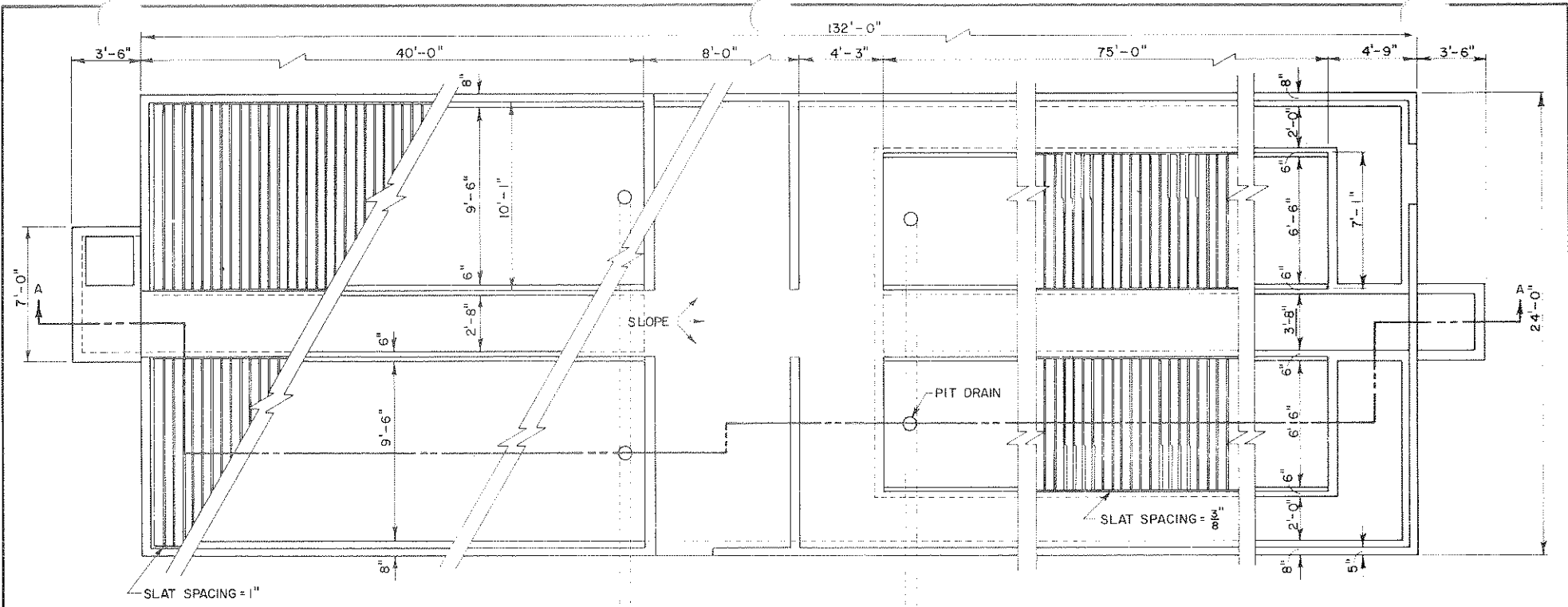
NOTE:
Trusses To Be Anchored To Double Plate With Plumber's Strap Or Framing Anchors As Shown

COOPERATIVE EXTENSION WORK IN
AGRICULTURE AND HOME ECONOMICS

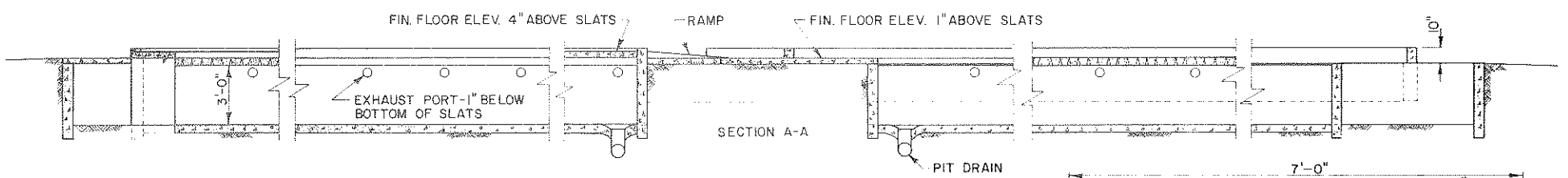
AND
UNITED STATES DEPARTMENT OF AGRICULTURE COOPERATING

FARROWING HOUSE
FOR 30 SOWS

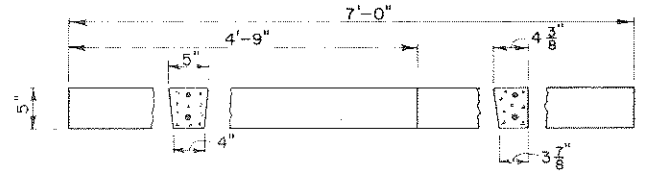
OK. '76 6247 SHEET 2 OF 5



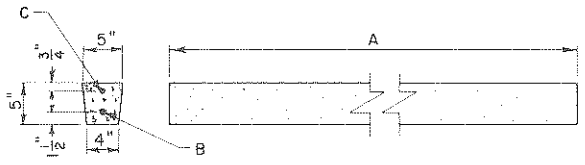
FOUNDATION PLAN



SECTION A-A

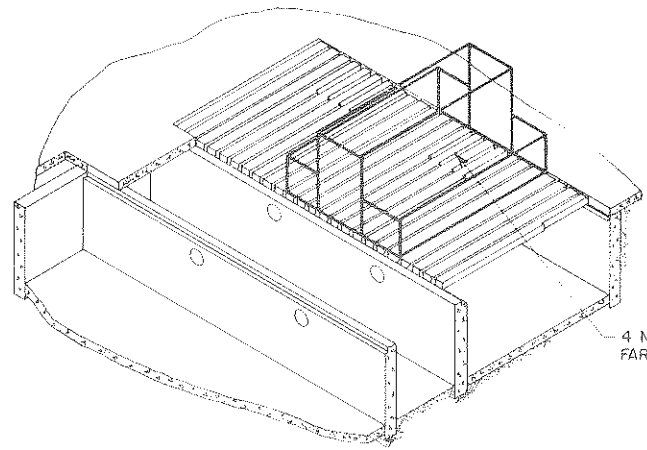


NOTCHED FARROWING SLAT DETAIL



CONCRETE SLAT DETAILS

	FARROWING	GROWING
A	7'-0"	10'-0"
B	No. 4 BAR	No. 5 BAR
C	No. 2 BAR	



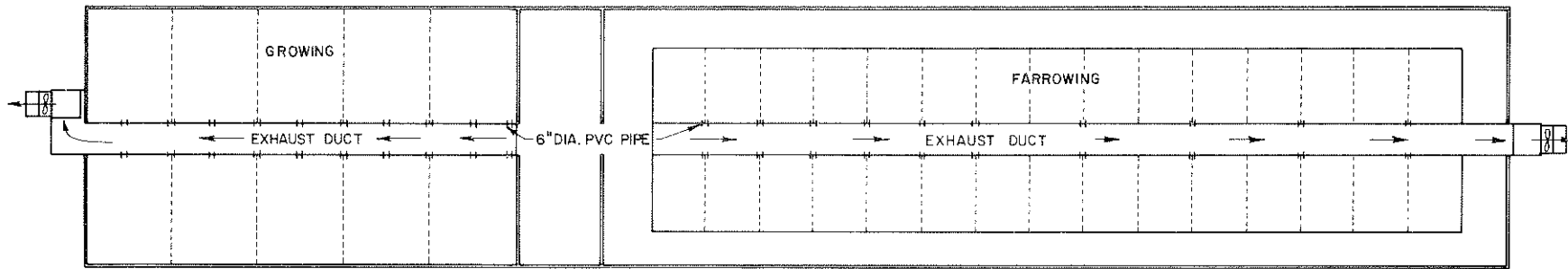
4 NOTCHED SLATS UNDER EACH FARROWING CRATE AS SHOWN

COOPERATIVE EXTENSION WORK IN
AGRICULTURE AND HOME ECONOMICS

AND
UNITED STATES DEPARTMENT OF AGRICULTURE COOPERATING

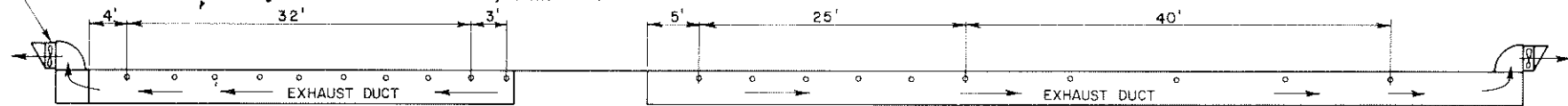
**FARROWING HOUSE
FOR 30 SOWS**

OK. '76 6247 SHEET 3 OF 5



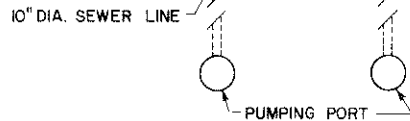
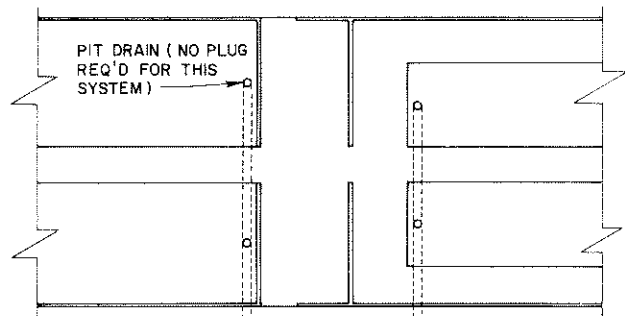
PLAN VIEW

EXHAUST FAN - Approximately 1,000 To 4,000 cfm Variable Speed Fan With Solid State Control Package. Minimum Volume Must Be Adjustable. 2 REQ'D.

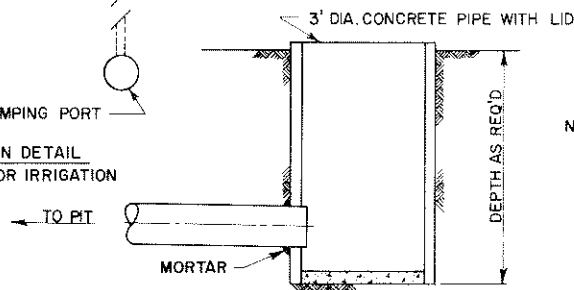


LONGITUDINAL SECTION

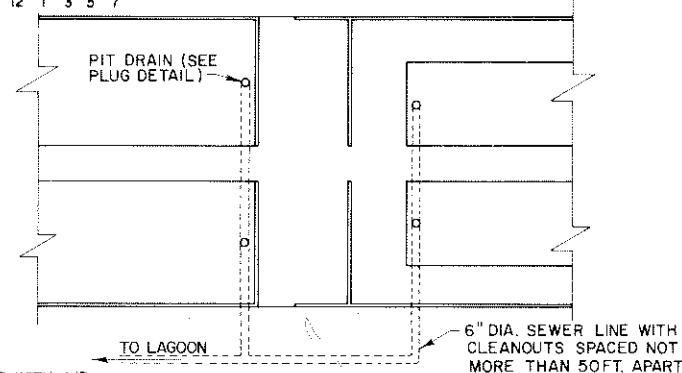
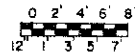
PIT VENTILATION DETAIL



PIT DRAIN DETAIL FOR HAULING OR IRRIGATION



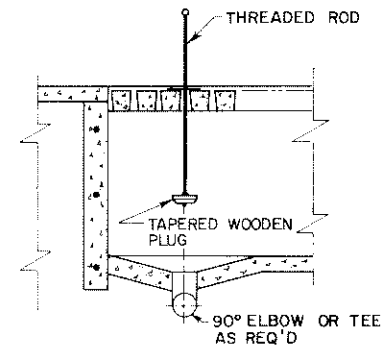
CROSS SECTION OF PUMPING PORT



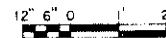
PIT DRAIN DETAIL DRAIN TO A LAGOON

NOTE:

- All Pit Floors To Slope Not More Than 1 in. Per 20 Ft. To Drain.
- Pit Drain Lines To Slope 1 Ft. Per 100 Ft.



PIT PLUG DETAIL



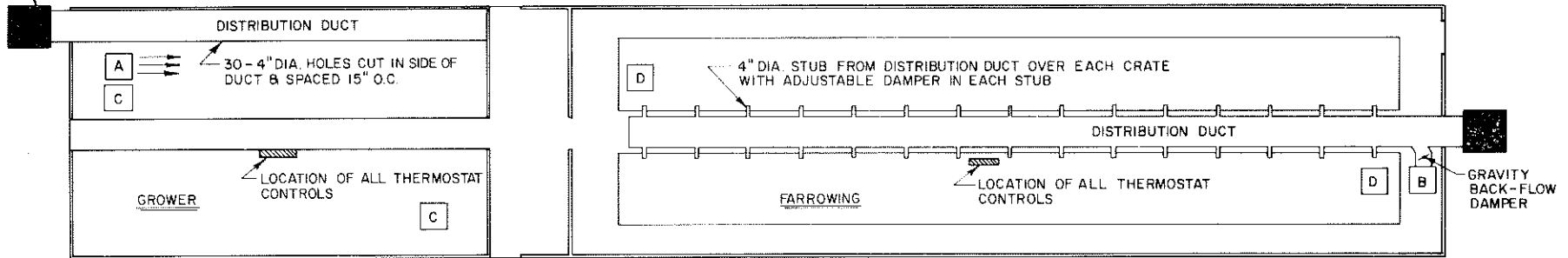
COOPERATIVE EXTENSION WORK IN AGRICULTURE AND HOME ECONOMICS

AND UNITED STATES DEPARTMENT OF AGRICULTURE COOPERATING

FARROWING HOUSE FOR 30 SOWS

OK. '76 6247 SHEET 4 OF 5

OTTO DISCHARGE EVAPORATIVE COOLER (INDUSTRIAL WEIGHT) WITH PADS ON 4 SIDES, 7,000 CFM (MINIMUM) FAN DELIVERY AT $\frac{1}{4}$ " STATIC PRESSURE



THERMOSTAT	TYPE	SETTING
Safety Heater	Close On Rise	55 °F
Fan - Nominal	Open On Rise	65 °F
Cooler Fan	Solid State Panel	70 °F
Cooler Water Pump	Close On Rise	78 °F
		80 °F

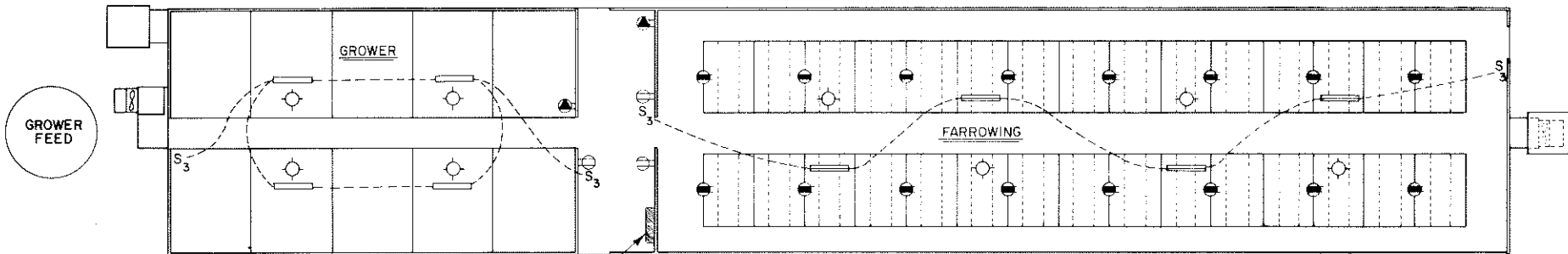
HEATING OPTIONS - GROWER
 A: 100,000 Btu/Hr (Minimum) Gas-Fired Heater With A Fan Throw Of 20'-30'
 C: 2 - 40,000 Btu/Hr Electric Heaters With A Fan Throw Of 20'-30'

THERMOSTAT	TYPE	SETTING
Safety Heater	Close On Rise	55 °F
Fan - Nominal	Open On Rise	70 °F
Cooler Fan	Solid State Panel	75 °F
Cooler Water Pump	Close On Rise	80 °F
		82 °F

HEATING OPTIONS - FARROWING
 B: 100,000 Btu/Hr (Minimum) Gas-Fired Heater With A Centrifugal Fan Capable Of Air Delivery At $\frac{1}{4}$ " Static Pressure
 D: 2 - 40,000 Btu/Hr (Minimum) Electric Heaters With A Fan Throw Of 50'-70'

HEATING PLAN

SOW FEED



POWER PANEL - Provide Separate Circuits For:

- Feed Augers
- Each Exhaust Fan
- Each Evaporative Cooler
- Heat Lamp Outlets (5 Duplex Outlets Per 20 Amp Circuit, Max.)
- Continuous Lighting & Gas Fired Heaters
- All Other Lighting & Convenience Outlets As Req'd

ELECTRICAL PLAN

SYMBOLS & LEGEND

- Ceiling Mounted Duplex Outlet For Heat Lamps
- Duplex Outlet
- Switch Controlled Outlet For Feed Augers
- Controlled Lighting - Farrowing
- Controlled Lighting - Grower
- Continuous Lighting

1. Since Only One Fan Serves Each Animal Space A Fan Failure Warning System Is Required & Should Be Monitored At All Times. A System Which Monitors Current In Each Fan Circuit Is Recommended Over One Which Monitors Voltage Only. The Warning System Should Activate A Battery Operated Bell At The Operator's Residence.
2. A Stand-By Generator Capable Of Picking Up The Entire Electrical Load Is Recommended.
3. The Building Foundation & Pit Walls May Be Formed By Trenching (As Drawn), By Forming, Or By Concrete Masonry Construction.
4. Lining Material May Be Corrugated Metal Placed Longitudinally, Vertical Joints Caulked, As Drawn, Or Any Other Impact Resistant Material Which Will Not Be Damaged By High Pressure Water Cleaning.
5. Building Should Be Adequately Protected From Lightning

COOPERATIVE EXTENSION WORK IN
 AGRICULTURE AND HOME ECONOMICS

AND
 UNITED STATES DEPARTMENT OF AGRICULTURE COOPERATING

**FARROWING HOUSE
 FOR 30 SOWS**

OK.	'76	6247	SHEET 5 OF 5
-----	-----	------	--------------