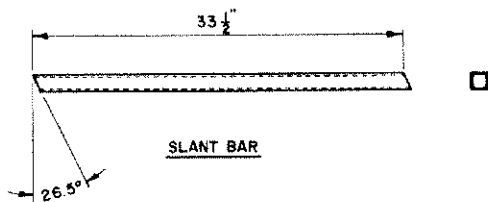
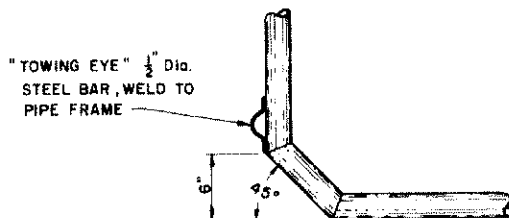


PERSPECTIVE

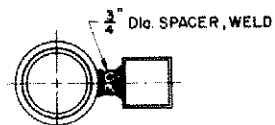


SLANT BAR

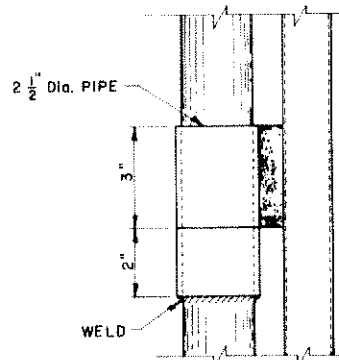


"TOWING EYE" 1/2" Dia. STEEL BAR, WELD TO PIPE FRAME

DETAIL "A"

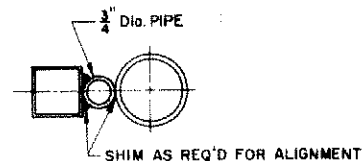


3/4" Dia. SPACER, WELD

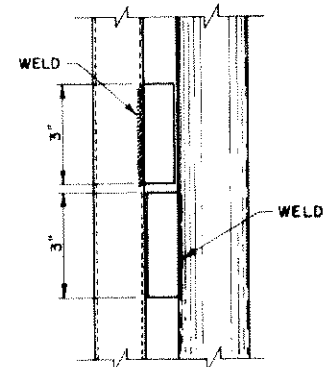


2 1/2" Dia. PIPE

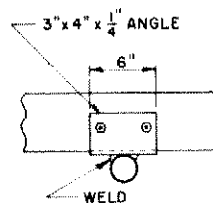
HINGE DETAIL "C"



SHIM AS REQ'D FOR ALIGNMENT



LATCH DETAIL "D"



3" x 4" x 1/4" ANGLE

WELD

DETAIL "B"



CARRIAGE BOLT



NOTCH

MATERIAL	REQ'D
1/2" x 1/4 Ga. Square Tubing	200'
2" Dia. Pipe	80'
Corrugated Metal Roofing, 10' Sheets	7
20 Ga. Sheet Metal	1' x 16'
20 Ga. Sheet Metal	1'-6" x 24'
3" x 4" x 1/4" Angle	12"
2" x 2" x 1/8" Angle	14"
2 1/2" Dia. Pipe	8"
3/4" x 3 1/2" Carriage Bolt	4
1/2" x 2 1/2" Carriage Bolt	12
2" x 6" x 1/4"	1
2" x 4" x 1/4"	2
2" x 4" x 1/8"	1
3/4" Dia. Steel Bar (Latch Pins & Spacers)	As Req'd

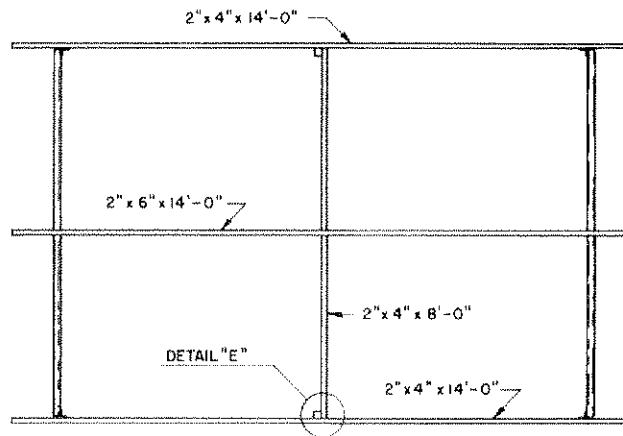
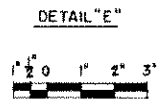
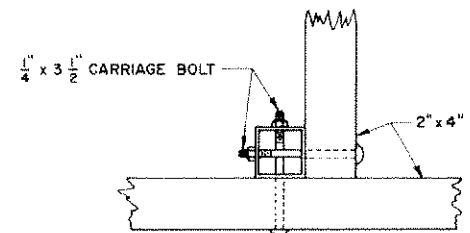
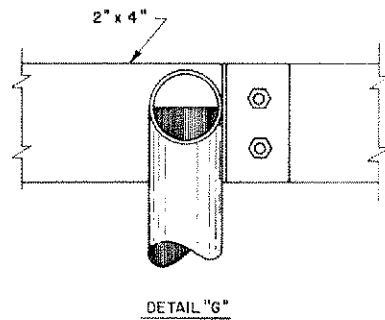
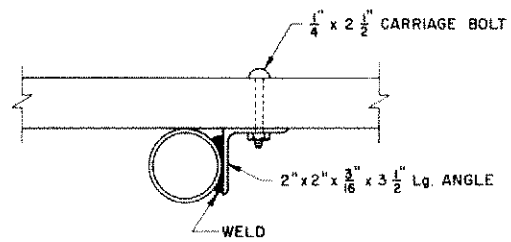
COOPERATIVE EXTENSION WORK IN AGRICULTURE AND HOME ECONOMICS

AND UNITED STATES DEPARTMENT OF AGRICULTURE COOPERATING

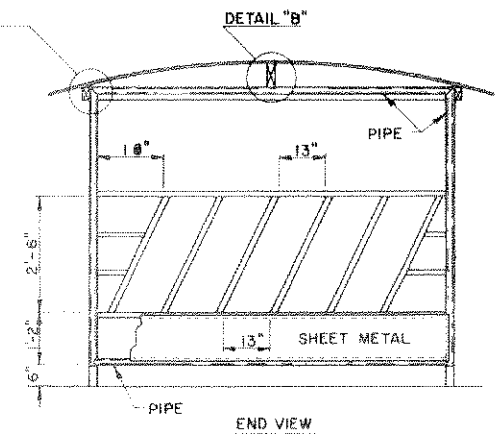
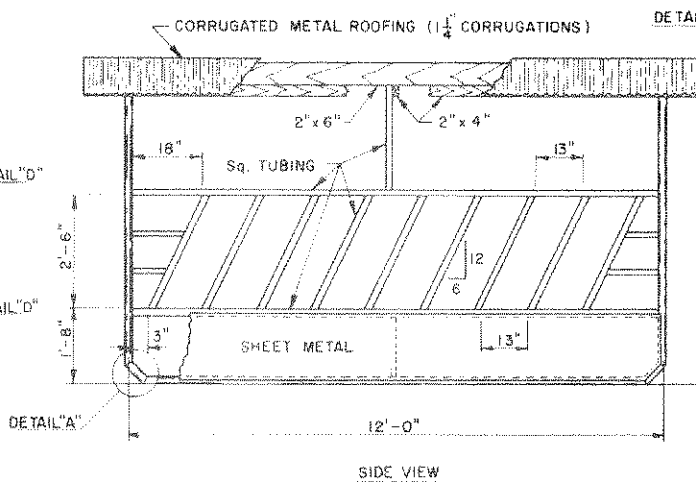
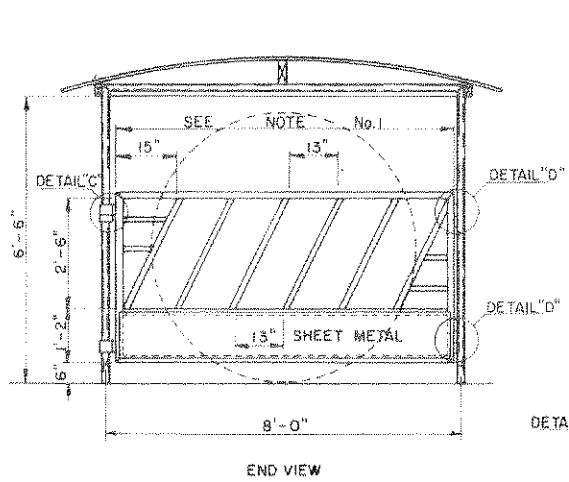
COVERED FEEDER FOR ROUND BALES

OK. '76 6245 SHEET 1 OF 2

BASED ON: OKLA. STATE UNIV. PLAN NO. OK-724-30



ROOF FRAMING



NOTE:

1. This Dimension To Be Determined After Structure Has Been Welded Together To Insure Proper Fit.
2. Feeder Designed To Accept 7' Dia. Bales — If Smaller Bales Are To Be Fed, The 8' Dimension Should Be Reduced To Bale Diameter Plus 12".
3. To Prevent Feeder From Overturning In High Winds, Fasten Securely To Ground.
4. If Feeder Is To Be Used On Soft Or Spongy Soil, The Runners Should Be Made From 4" Dia. Pipe.



COOPERATIVE EXTENSION WORK IN AGRICULTURE AND HOME ECONOMICS		
AND UNITED STATES DEPARTMENT OF AGRICULTURE COOPERATING		
COVERED FEEDER FOR ROUND BALES		
OK.	'76	6245 SHEET 2 OF 2