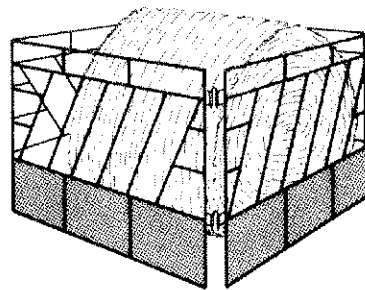
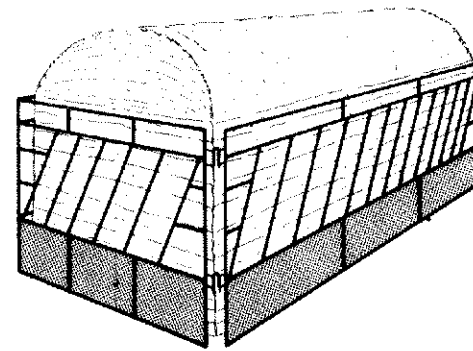
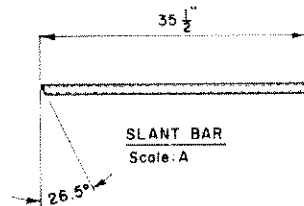


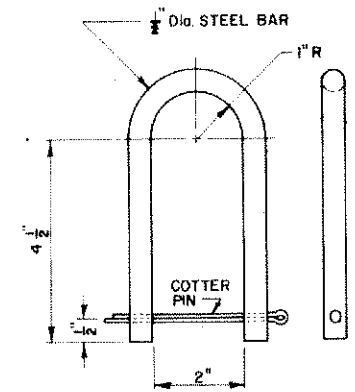
DETAIL "A"
Scale: B



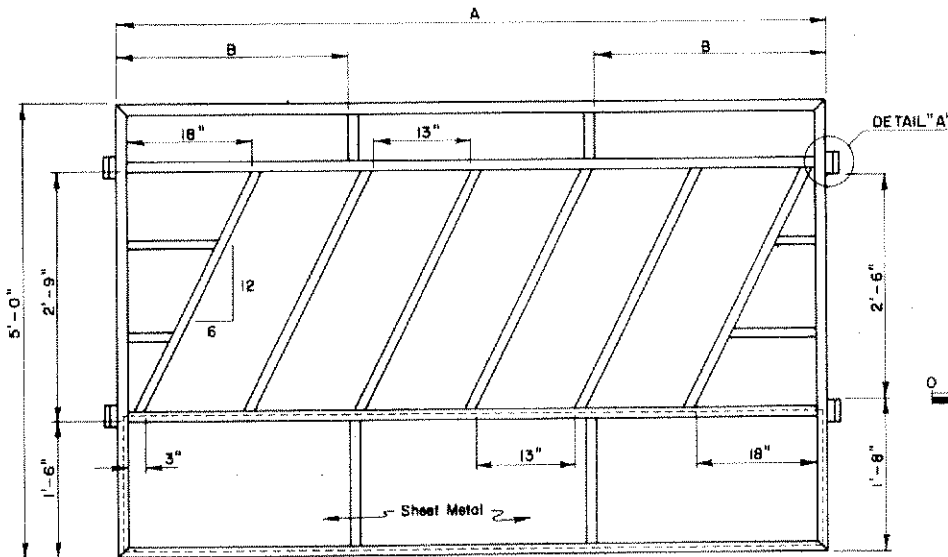
PERSPECTIVE



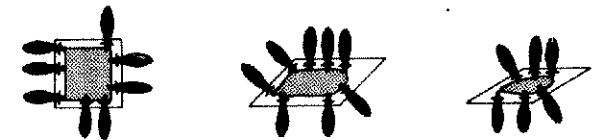
PERSPECTIVE



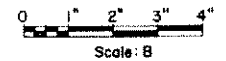
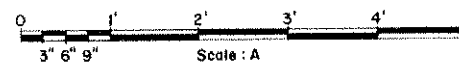
PANEL CONNECTOR PIN
Scale: B



FEEDER PANEL
Scale: A



Pinned Corner Connections Allow Panels To Collapse, Thus Providing Complete Hay Cleanup.



BASED ON: OKLA. STATE UNIV.
PLAN NO. OK-724-28

NOTE:
 $\frac{1}{2}$ " Dia x 16 Ga. (.065") Round
Tubing May Be Substituted
For The Square Tubing

Bill Of Material (Per Panel)	8'	10'	12'	14'	16'
$\frac{1}{2}$ " x 16 Ga. (.065") Square Tubing	66'	85'	96'	113'	120'
18" x 20 Ga. (.0359") Sheet Steel	7'-11"	10'-1"	12'-3"	14'-5"	15'-6"
$\frac{1}{4}$ " x 1" Steel Bar	12"	12"	12"	12"	12"
$\frac{1}{2}$ " Dia. Pipe	12"	12"	12"	12"	12"
$\frac{1}{2}$ " Dia. Steel Bar	2'-2"	2'-2"	2'-2"	2'-2"	2'-2"
APPROX. WEIGHT PER PANEL, Lbs.	93	113	134	155	164
Dimension					
A	8'-0"	10'-2"	12'-4"	14'-6"	15'-7"
B	2'-6"	3'-4"	4'-0"	4'-10"	5'-2"

COOPERATIVE EXTENSION WORK IN
AGRICULTURE AND HOME ECONOMICS

AND
UNITED STATES DEPARTMENT OF AGRICULTURE COOPERATING

SLANT BAR FEEDER PANELS

OK. '76 6242 SHEET 1 OF 1