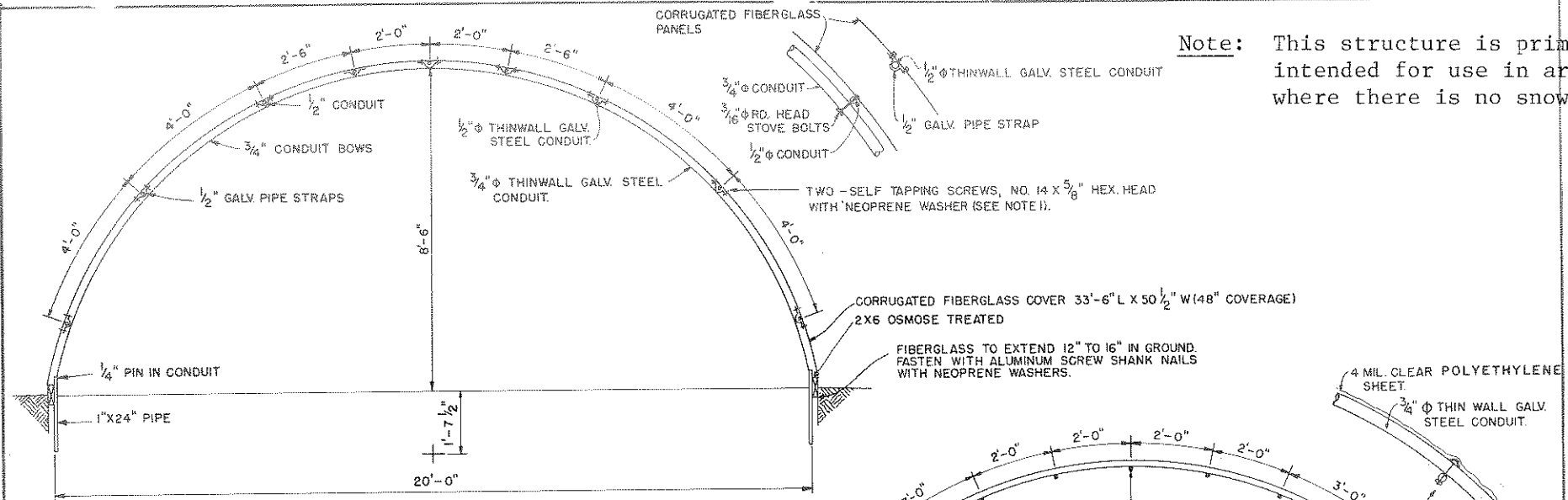
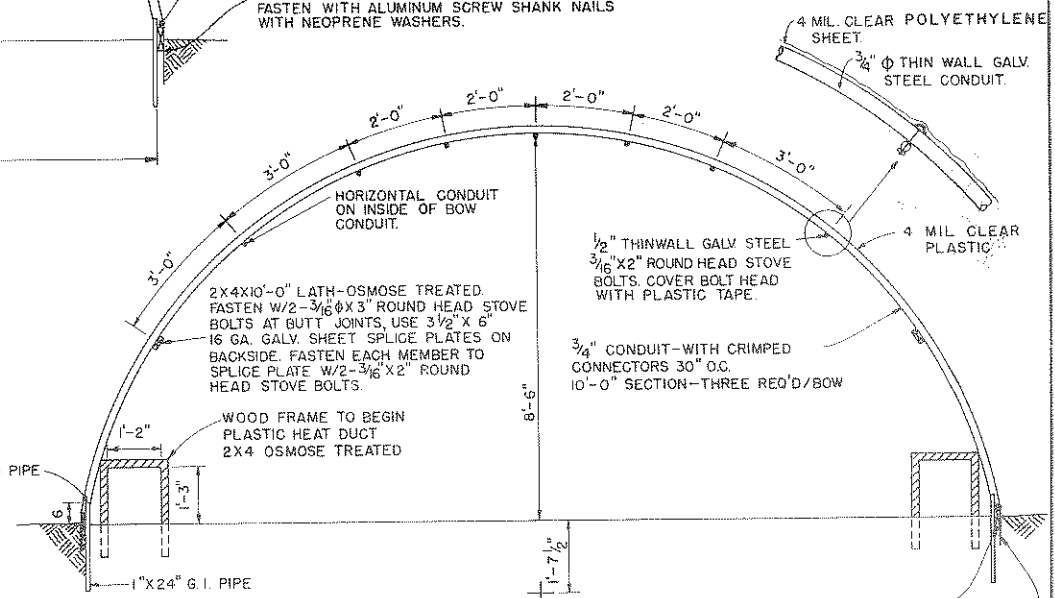


Note: This structure is primarily intended for use in areas where there is no snow load.



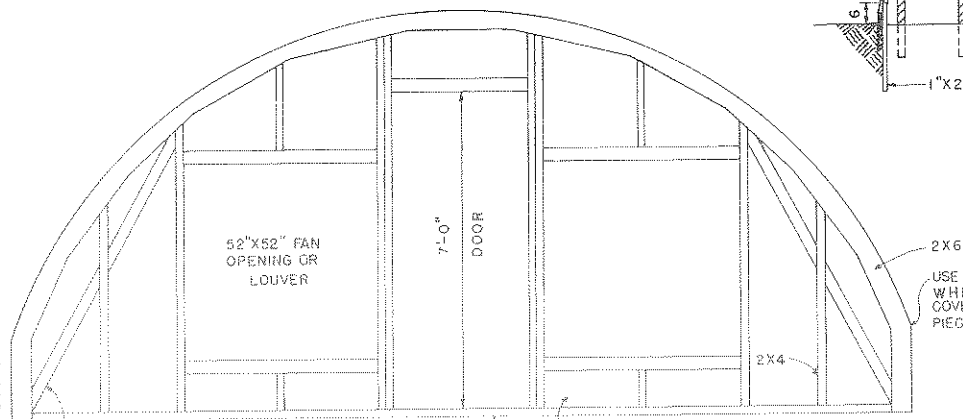
FIBERGLASS SECTION

NOTE 1:
NO. 14 X 5/8\"/>



POLYETHYLENE COVERED SECTION

Note: This structure is primarily intended for use in areas where there is no snow load.



END FRAMING

NOTE:
CONSULT LOCAL BUILDING CODE AUTHORITIES BEFORE STARTING CONSTRUCTION.

WHEN FIBERGLASS IS USED FOR END WALL COVERS, FASTEN AS PER MANUFACTURER'S RECOMMENDATIONS.

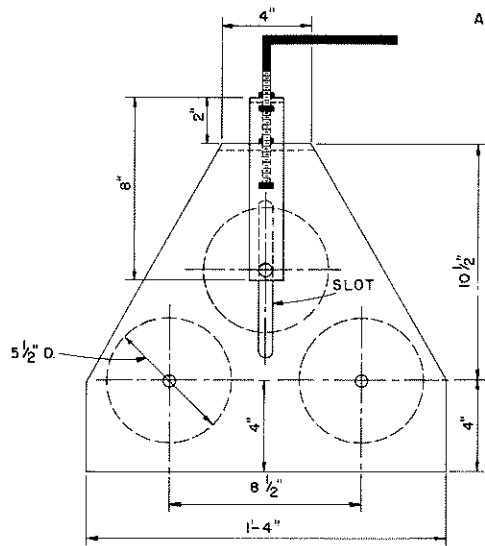
BASED ON: MISS. STATE UNIV. PLAN NO. 6094-A. TRUCK CROPS RES. CTR.

COOPERATIVE EXTENSION WORK IN AGRICULTURE AND HOME ECONOMICS

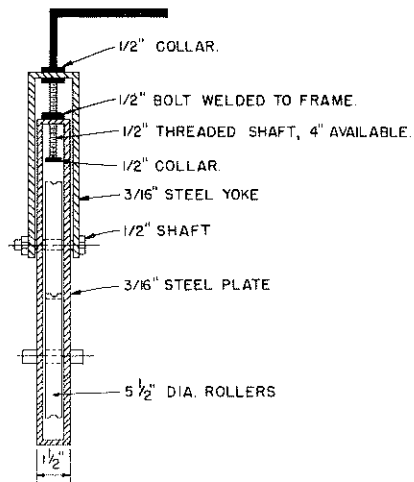
UNITED STATES DEPARTMENT OF AGRICULTURE COOPERATING

PLASTIC GREENHOUSES

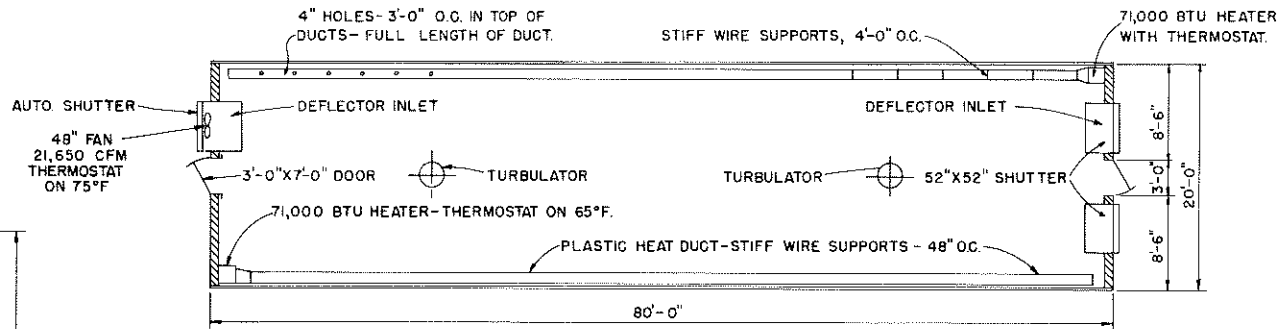
MISS. '75 6217 SHEET 1 OF 2



CONDUIT BENDER
SIDE VIEW



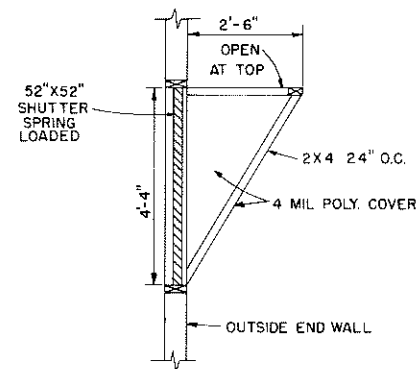
CONDUIT BENDER
SECTION VIEW



BASIC FLOOR PLAN

BILL OF MATERIALS

NO. REQ'D	DESCRIPTION
GRP I	FRAMING - 2 ENDS AND SIDES
16	2X6X10' OSMOSE TRTD. NO. 2 PINE
6	2X6X8' " " " " "
18	2X4X12' " " " " "
8	2X4X8' " " " " "
5 LBS.	6d COMMON NAILS
12 LBS.	10d
2	3'X7' SCREEN DOORS WITH HINGES AND LATCHES
GRP II	FIBERGLASS-TYPE FRAMING
72	10' LENGTHS 1/2" DIA. STEEL CONDUIT
99	10' LENGTHS 3/4" DIA. " " " " "
63	1/2" CRIMPED TYPE COUPLING
66	3/4" " " " " "
300	3/16" X 2" STEEL STOVE BOLTS - ROUND HEAD
132	1" BLACK PIPE (USED PIPE SATISFACTORY)
GRP III	POLYETHYLENE-TYPE FRAMING
	SAME AS FIBERGLASS WITH THE FOLLOWING ADDITIONAL ITEMS AND ONE ITEM CHANGED.
16	2X4X10' OSMOSE TRTD. NO. 2 PINE (ADDITIONAL)
56	10' LENGTHS 1/2" DIA. STEEL CONDUIT (CHANGED)
20	1X4X10' OSMOSE TRTD. NO. 2 PINE (BATTEN)
GRP IV	FIBERGLASS PANELS AND SUPPLIES
20	PANELS 33'-6" X 50 1/2" WIDTH (48" COVERAGE)
4	PANELS 9'-9"
7	PANELS 6'-0"
4	PANELS 9'-4"
1200	1/2" PIPE STRAPS - EVERY 3RD VALLEY ON ALL HORIZONTAL MEMBERS
2400	1/2" PIPE STRAP FASTENERS (NO. 14X5/8" HEX. HEAD SELF-TAPPING SCREWS)
300	ALUMINUM SCREW NAILS
700	SIDELAP FASTENERS (NO. 14X5/8" HEX. HEAD SELF-TAPPING SCREWS)
25	PLASTIC CORRUGATED CLOSURE STRIPS VERTICAL
24	
GRP V	POLYETHYLENE FOR POLY-TYPE
1	ROLL 100' X 32', 4 MIL. CLEAR
GRP VI	EQUIPMENT AND SUPPLIES - COMMON TO BOTH
1	48" SINGLE-SPEED FAN W/HP MOTOR AND SHUTTER
2	52" X 52" SPRING LOAD SHUTTERS
2	TURBULATORS - 1/6 HP MOTOR
2	21KW - 71,000 BTU INPUT HEATERS
160 FT	6' WIDTH 2 MIL. POLY FOR HEAT DUCTS
POLYETHYLENE - USE GRPS. I, II, III, V, & VI	
FIBERGLASS - USE GRPS. I, II, IV, V, & VI	



AIR INLET DEFLECTOR