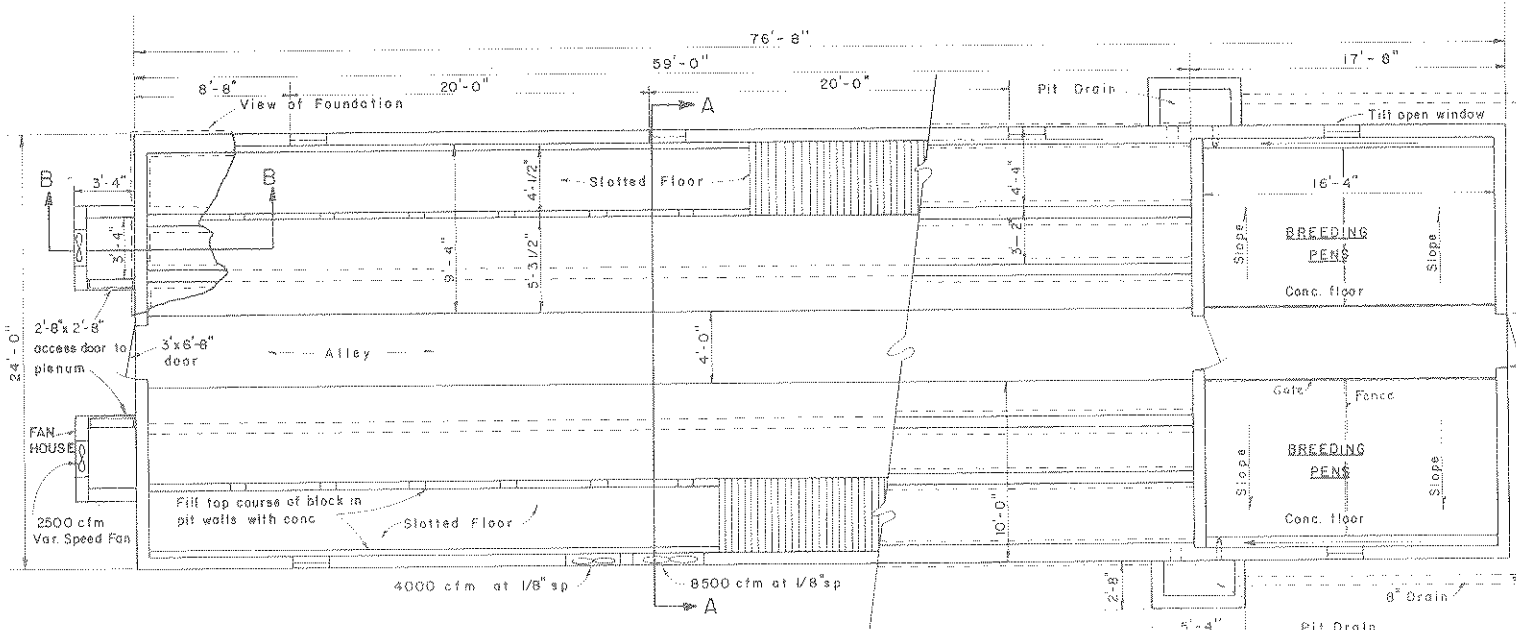


NOTE 1:
Velocity of conditioned air exiting flexible duct at stall must be 800 to 1000 ft. per min.

SECTION A-A

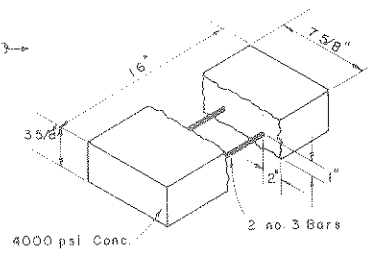
SECTION B-B, FAN HOUSE & DUCT



FLOOR & FOUNDATION PLAN — 30 sows, 10 boars

SCALE - 3/16" = 1'-0"

NOTE: CONSULT LOCAL HEALTH AND BUILDING CODE AUTHORITIES BEFORE STARTING CONSTRUCTION.



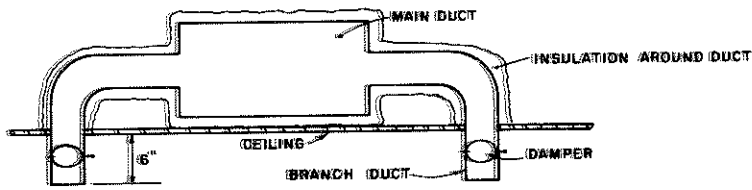
CONC. LINTEL DETAIL
If gang slits are used, an 8" x 4" x 16" conc. block can be substituted for the above lintel.

SCALE: 3/8" = 1'-0" UNLESS OTHERWISE NOTED.

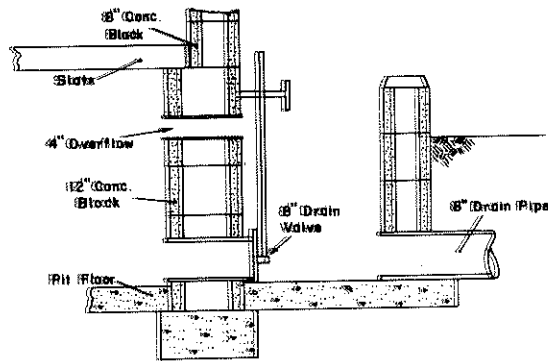
COOPERATIVE EXTENSION WORK IN AGRICULTURE AND HOME ECONOMICS		
AND UNITED STATES DEPARTMENT OF AGRICULTURE COOPERATING		
SWINE BREEDING BUILDING CONTROLLED ENVIRONMENT		
N.C.	'75 6215	SHEET 1 OF 2

BASED ON: N.C. STATE UNIV. PLAN NO. 531

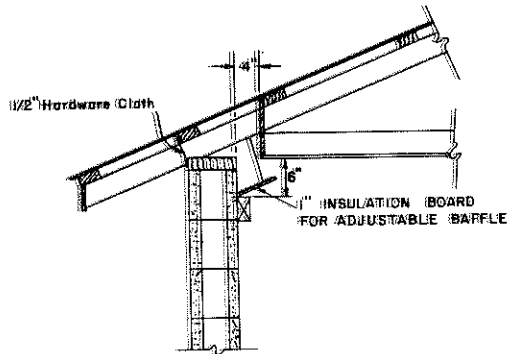
DUCTS TO BE SUPPLIED BY AIR CONDITIONER CONTRACTOR TO DELIVER 0.15 TONS OR 1800 BTU/HR OF REFRIGERATION WITH A VELOCITY OF 800 TO 1000 FT/MIN.



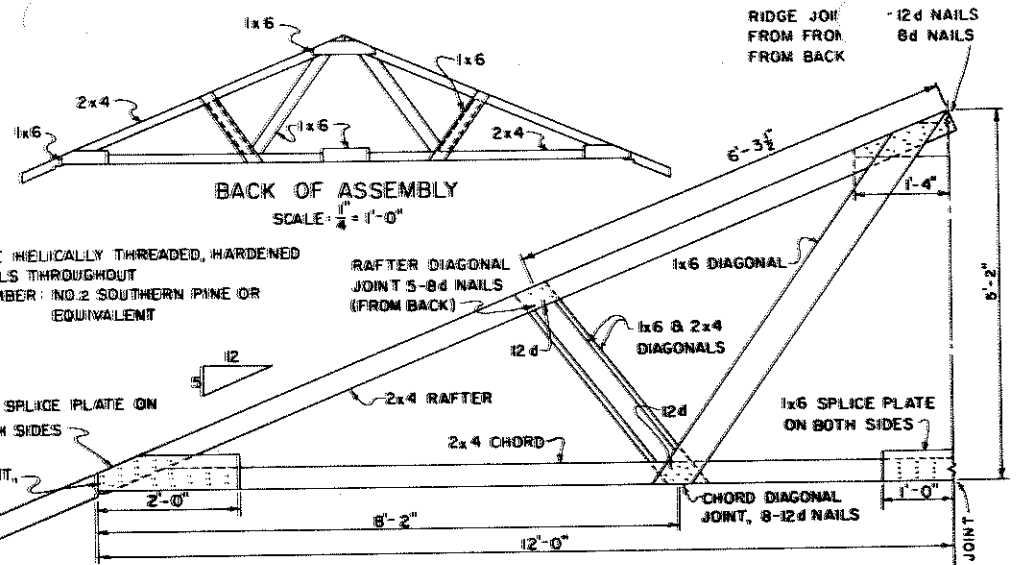
DETAIL II
SCALE: 1/4" = 1'-0"
SECTION THRU COOLING DUCT.



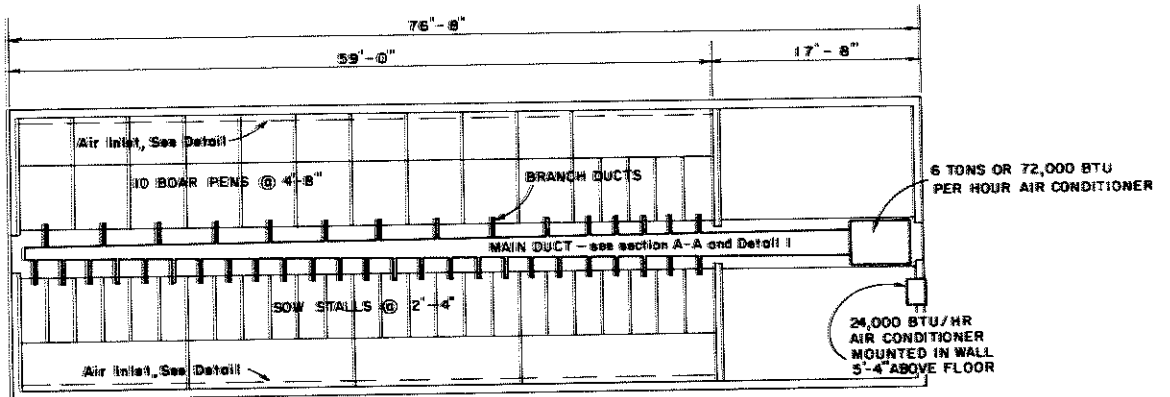
PIT DRAIN DETAIL



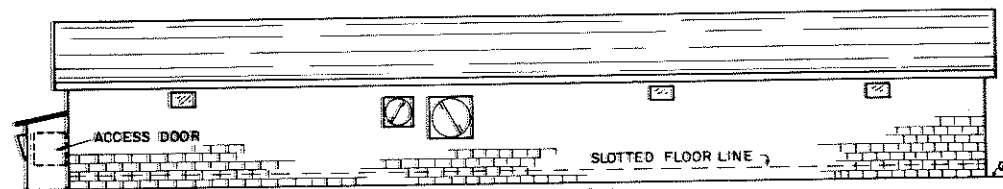
AIR INLET



TRUSS DETAILS - HALF ASSEMBLY



LAYOUT OF AIR CONDITIONER SYSTEM



RIGHT SIDE ELEVATION

SCALE - 1/8" = 1'-0"
12' 0" 4" 8"

12" 6" 0" 1"

SCALE: 3/4" = 1'-0" UNLESS OTHERWISE NOTED.

COOPERATIVE EXTENSION WORK IN AGRICULTURE AND HOME ECONOMICS

AND UNITED STATES DEPARTMENT OF AGRICULTURE COOPERATING

SWINE BREEDING BUILDING CONTROLLED ENVIRONMENT

N.C. '75 6215 SHEET 2 OF 2