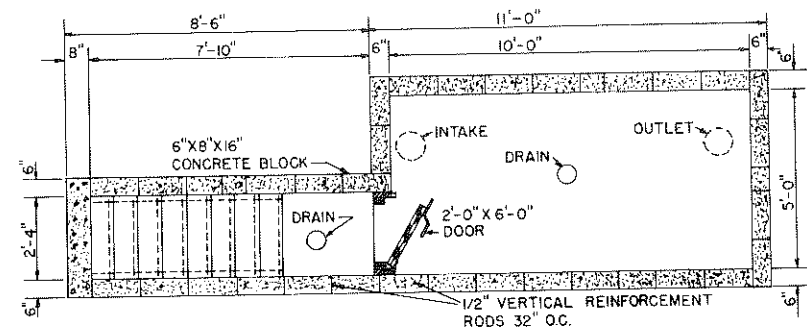
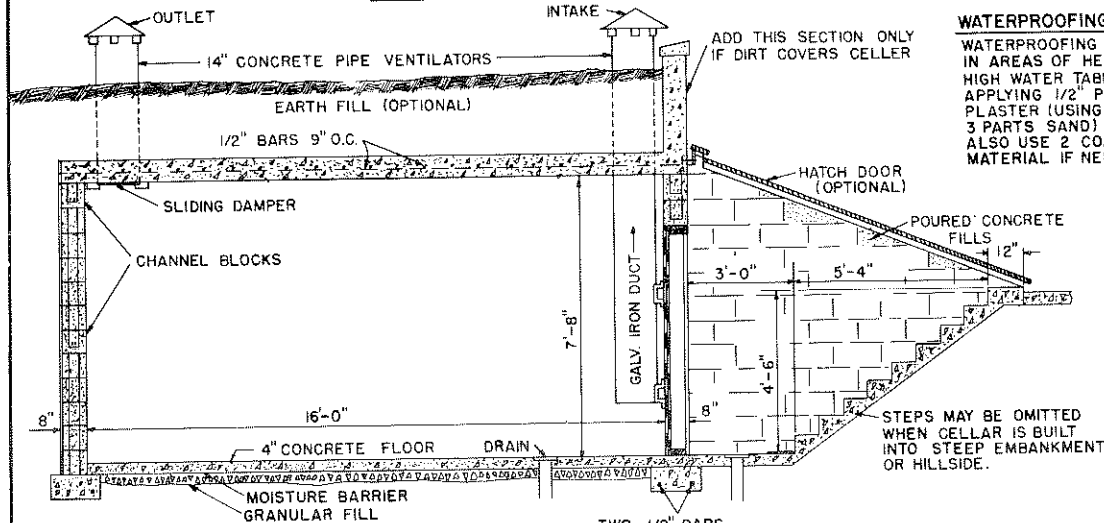


PLAN

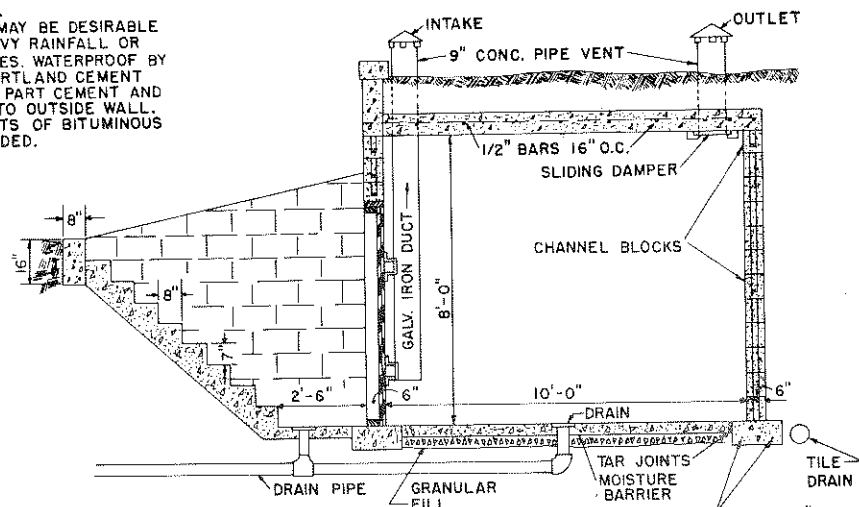


PLAN



LONGITUDINAL SECTION

**WATERPROOFING:**  
 WATERPROOFING MAY BE DESIRABLE IN AREAS OF HEAVY RAINFALL OR HIGH WATER TABLES. WATERPROOF BY APPLYING 1/2" PORTLAND CEMENT PLASTER (USING 1 PART CEMENT AND 3 PARTS SAND) TO OUTSIDE WALL. ALSO USE 2 COATS OF BITUMINOUS MATERIAL IF NEEDED.



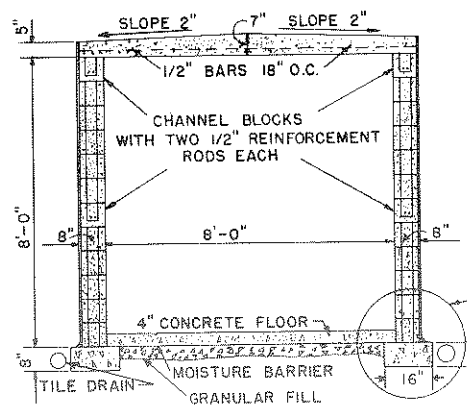
LONGITUDINAL SECTION

**ALTERNATE WALL SECTION:**

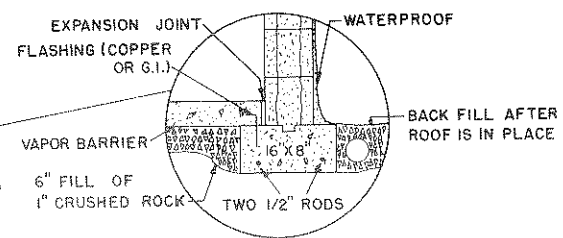
A 6" POURED CONCRETE WALL MAY BE USED. THE STEEL REINFORCING MUST BE 1/2" REINFORCING RODS 12" ON CENTER EACH WAY.

**NOTE:**

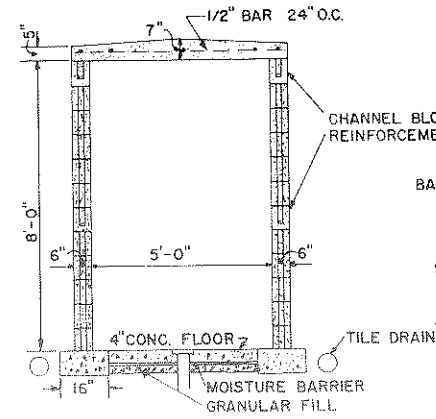
FLOOR DRAINS MAY BE USED IF THERE IS A LOWER AREA NEARBY TO WHICH WATER MAY BE DRAINED. IF A SUMP IS USED, EQUIP IT WITH AN AUTOMATIC PUMP.



CROSS SECTION



SCALE: 3/4" = 1'-0"



CROSS SECTION

BASED ON: AUBURN UNIV. PLAN NO. U-113 & U-114



SCALE: 3/8" = 1'-0" UNLESS OTHERWISE NOTED.

COOPERATIVE EXTENSION WORK IN AGRICULTURE AND HOME ECONOMICS

AND UNITED STATES DEPARTMENT OF AGRICULTURE COOPERATING

**STORM CELLAR**

ALA. '75 6209 SHEET 1 OF 1

CONSULT LOCAL HEALTH AND BUILDING CODE AUTHORITIES BEFORE STARTING CONSTRUCTION