

NOTE:
SEE SHEET 3 FOR FOUNDATION DETAILS OR POST & BEAM FRAMING. CONSULT LOCAL HEALTH AND BUILDING CODE AUTHORITIES BEFORE STARTING CONSTRUCTION.

POLE FRAME-CANTILEVER AISLE

PLAN LAYOUT
SCALE: 3/16" = 1'-0"
12" 0' 1' 2' 3' 4' 5' 6' 7'



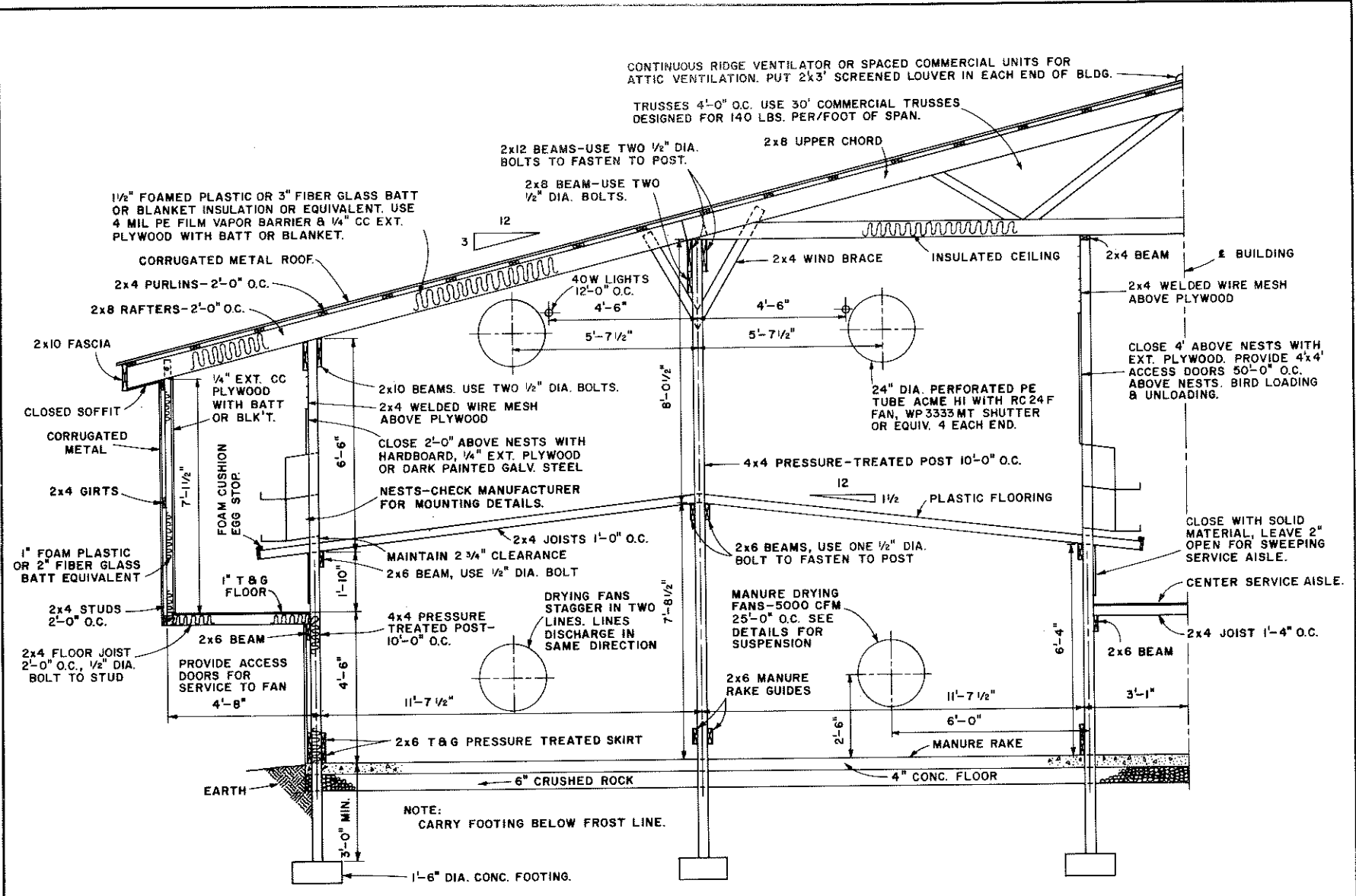
COOPERATIVE EXTENSION WORK IN AGRICULTURE AND HOME ECONOMICS

UNITED STATES DEPARTMENT OF AGRICULTURE COOPERATING

BROILER BREEDER HOUSE
DOUBLE 'A'

PA. '75 6193 SHEET 1 OF 4

CAPACITY: BROILERS 10,000 & BREEDERS 1,100
BASED ON: PENN. STATE UNIV. PLAN NO. 727-365



POLE FRAME-CANTILEVER AISLE

HALF CROSS SECTION

SCALE: 1/2" = 1'-0"

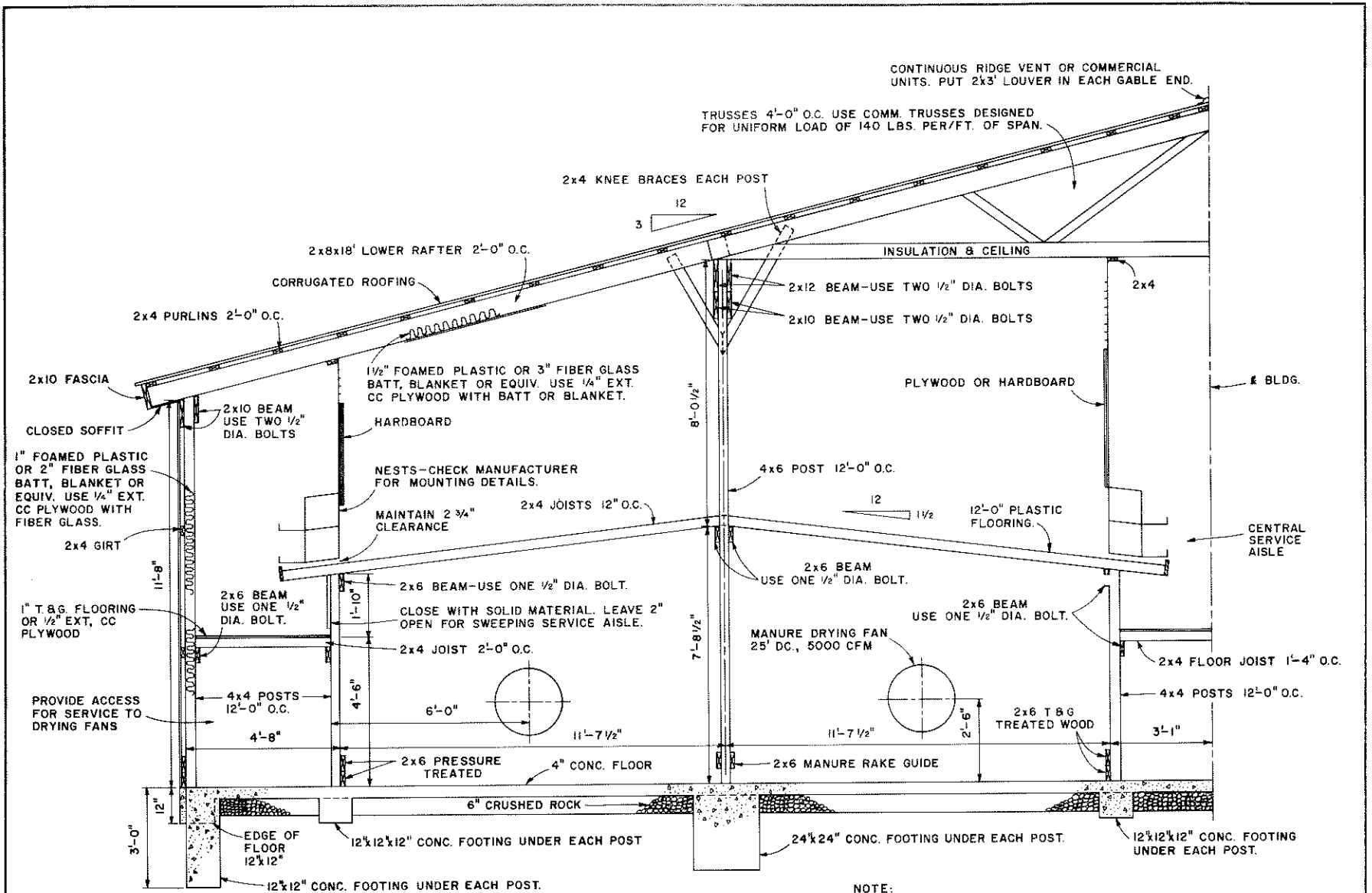


COOPERATIVE EXTENSION WORK IN AGRICULTURE AND HOME ECONOMICS

AND UNITED STATES DEPARTMENT OF AGRICULTURE COOPERATING

BROILER BREEDER HOUSE
DOUBLE A

PA. '75 6193 SHEET 2 OF 4



CONTINUOUS RIDGE VENT OR COMMERCIAL UNITS. PUT 2x3' LOUVER IN EACH GABLE END.

TRUSSES 4'-0" O.C. USE COMM. TRUSSES DESIGNED FOR UNIFORM LOAD OF 140 LBS. PER/FT. OF SPAN.

2x4 KNEE BRACES EACH POST

2x8x18' LOWER RAFTER 2'-0" O.C.

CORRUGATED ROOFING

2x4 PURLINS 2'-0" O.C.

2x10 FASCIA

CLOSED SOFFIT

1" FOAMED PLASTIC OR 2" FIBER GLASS BATT, BLANKET OR EQUIV. USE 1/4" EXT. CC PLYWOOD WITH FIBER GLASS.

2x4 GIRT

1" T & G FLOORING OR 1/2" EXT. CC PLYWOOD

PROVIDE ACCESS FOR SERVICE TO DRYING FANS

2x6 BEAM USE ONE 1/2" DIA. BOLT.

2x6 BEAM-USE ONE 1/2" DIA. BOLT. CLOSE WITH SOLID MATERIAL. LEAVE 2" OPEN FOR SWEEPING SERVICE AISLE.

2x4 JOIST 2'-0" O.C.

4'-8"

4'-6"

6'-0"

4'-8"

11'-7 1/2"

4" CONC. FLOOR

6" CRUSHED ROCK

EDGE OF FLOOR 12 1/2" x 12"

12 1/2" x 12" CONC. FOOTING UNDER EACH POST.

12 1/2" x 12" CONC. FOOTING UNDER EACH POST.

12

3

8'-0 1/2"

7'-8 1/2"

11'-7 1/2"

11'-7 1/2"

2'-6"

3'-1"

INSULATION & CEILING

2x12 BEAM-USE TWO 1/2" DIA. BOLTS

2x10 BEAM-USE TWO 1/2" DIA. BOLTS

PLYWOOD OR HARDBOARD

12

1 1/2

12'-0" PLASTIC FLOORING

2x6 BEAM USE ONE 1/2" DIA. BOLT.

2x6 BEAM USE ONE 1/2" DIA. BOLT.

MANURE DRYING FAN 25" DC., 5000 CFM

2x6 BEAM USE ONE 1/2" DIA. BOLT.

2x6 T & G TREATED WOOD

2x6 MANURE RAKE GUIDE

2x4 FLOOR JOIST 1'-4" O.C.

4x4 POSTS 12'-0" O.C.

3'-1"

2x4

2x4

BLDG.

CENTRAL SERVICE AISLE

POST & BEAM HALF CROSS SECTION

SCALE: 1/2" = 1'-0"

12" 0' 1' 2' 3'

NOTE: PROVIDE ACCESS FOR SERVICE TO DRYING FAN THRU TUNNEL UNDER AISLE.

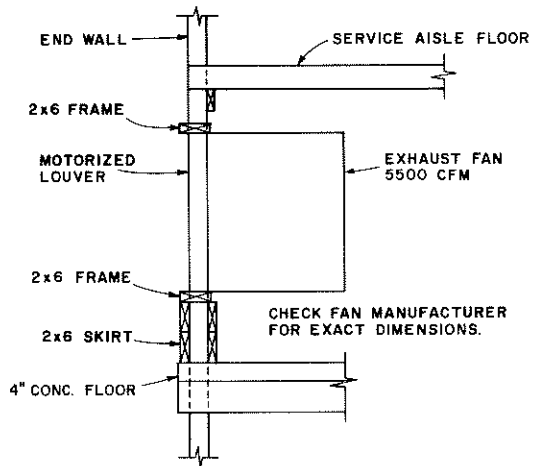
- NOTE:
1. SEE SHEET 1 FOR LIGHTING DETAILS.
 2. SEE SHEET 2 FOR DETAILS OF CLOSING OVER NESTS.
 3. SEE SHEET 4 FOR TUBE VENTILATION DETAILS.
 4. SEE SHEET 4 FOR MANURE DRYING FAN DETAILS.

COOPERATIVE EXTENSION WORK IN AGRICULTURE AND HOME ECONOMICS

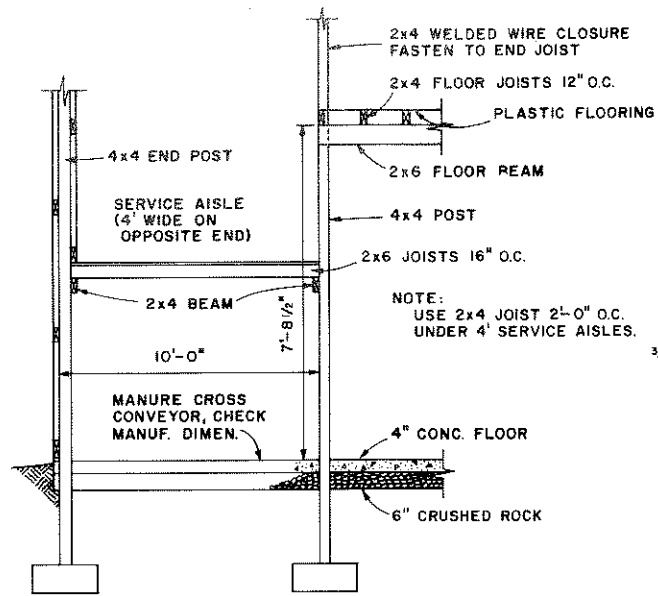
AND UNITED STATES DEPARTMENT OF AGRICULTURE COOPERATING

BROILER BREEDER HOUSE DOUBLE "A"

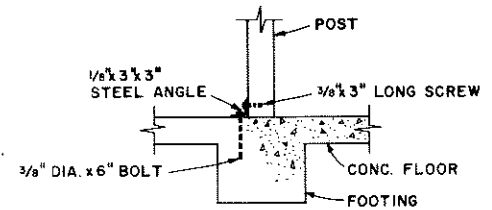
PA. '75 6193 SHEET 3 OF 4



EXHAUST FAN FRAME

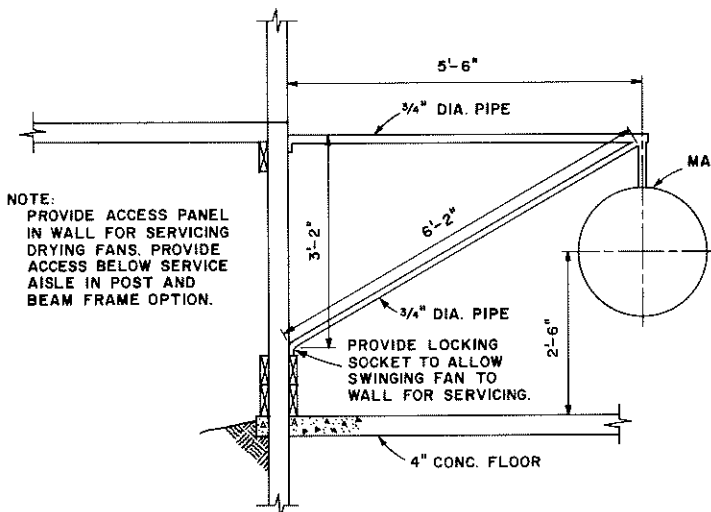


END SERVICE AISLE FRAMING
NO SCALE

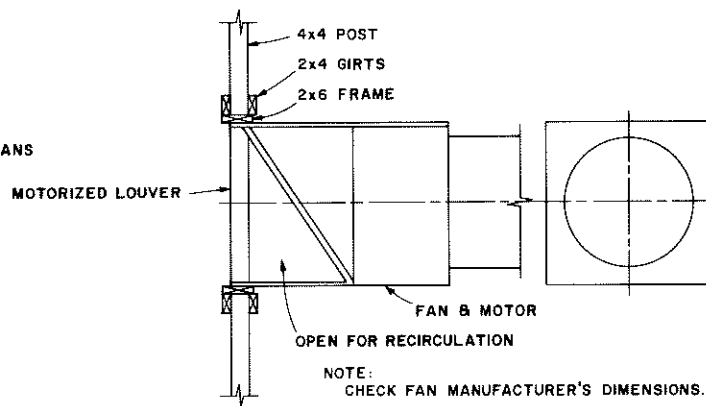


POST ANCHOR DETAIL

SCALE: 1"=1'-0"



MANURE DRYING FAN SUPPORT



FAN & TUBE FRAMING

COOPERATIVE EXTENSION WORK IN
AGRICULTURE AND HOME ECONOMICS

AND
UNITED STATES DEPARTMENT OF AGRICULTURE COOPERATING

BROILER BREEDER HOUSE
DOUBLE "A"

PA. '75 **6193** SHEET 4 OF 4



SCALE: 3/4"=1'-0" UNLESS OTHERWISE NOTED.