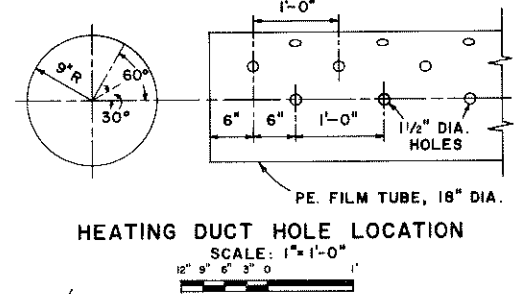
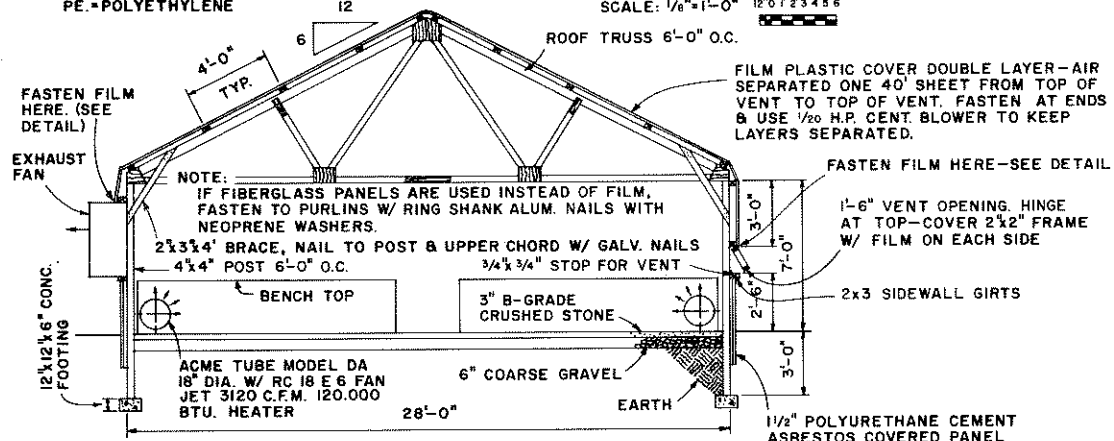


NOTE:
PE.-POLYETHYLENE

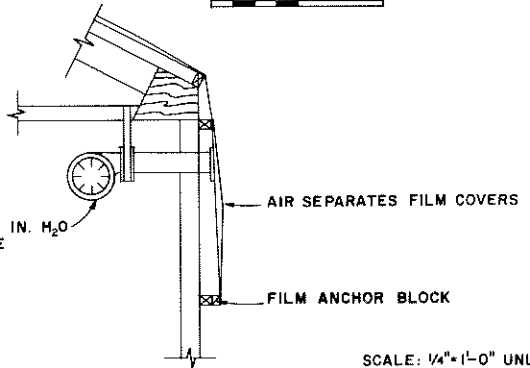
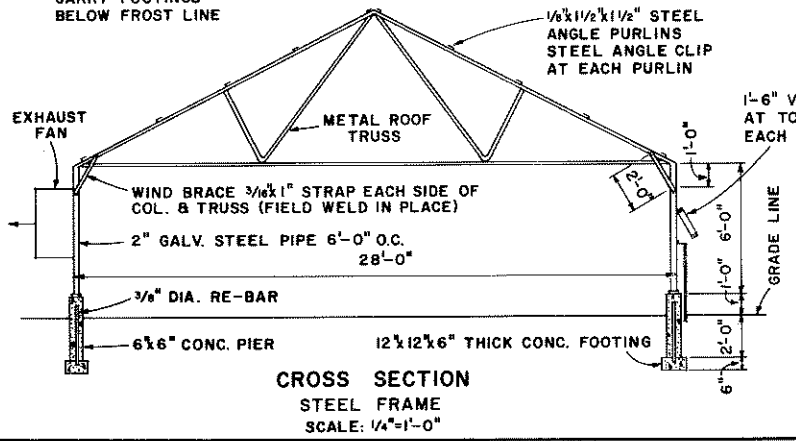
GREENHOUSE PLAN
SCALE: 1/8"=1'-0" 12'0" / 2'3'4"5'6"



NOTE:
CARRY FOOTINGS
BELOW FROST LINE

CROSS SECTION
SCALE: 1/4"=1'-0"

CENT. BLOWER 20 C.F.M. AT 0.5 IN. H₂O
1/20 H.P. BLOWER ONE PER HOUSE



BLOWER DETAIL
SCALE: 3/4"=1'-0" 12'0" / 6'3'0"

SCALE: 1/4"=1'-0" UNLESS
OTHERWISE NOTED
12'0" / 1'2'3'4'5'

NOTE:
CONSULT LOCAL HEALTH AND
BUILDING CODE AUTHORITIES
BEFORE STARTING CONSTRUCTION.

MENTION OF A TRADE NAME DOES NOT CONSTITUTE
A GUARANTEE OR WARRANTY OF THE PRODUCT BY
THE U.S. DEPARTMENT OF AGRICULTURE OR AN
ENDORSEMENT BY THE DEPARTMENT OVER OTHER
PRODUCTS NOT MENTIONED.

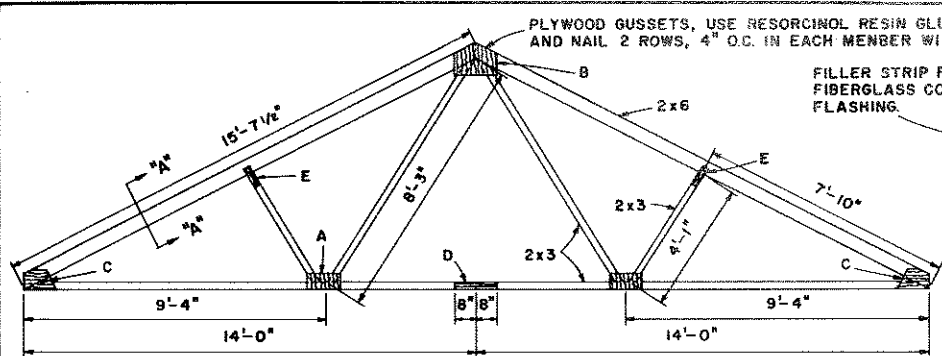
BASED ON: PENNA. STATE UNIV. PLAN NO. 822-349

COOPERATIVE EXTENSION WORK IN
AGRICULTURE AND HOME ECONOMICS

AND
UNITED STATES DEPARTMENT OF AGRICULTURE COOPERATING

28' GREENHOUSE

PA.	'74	6185	SHEET 1 OF 3
-----	-----	------	--------------



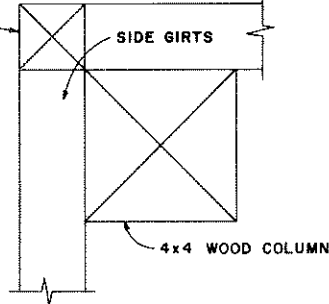
USE 1500+ GRADE DOUGLAS FIR, WESTERN HEMLOCK, SOUTHERN YELLOW PINE OR EQUIVALENT.

WOOD TRUSS LAYOUT

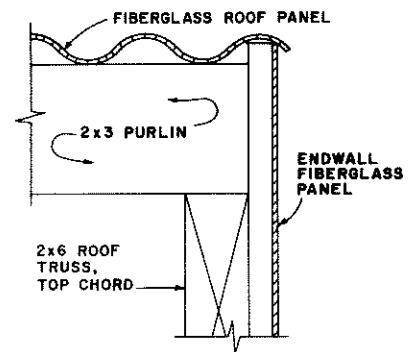
SCALE: 3/8"=1'-0" 12" 6" 0" 1' 2' 3'

PLYWOOD GUSSETS, USE RESORCINOL RESIN GLUE—APPLY TO BOTH SURFACES. AND NAIL 2 ROWS, 4" O.C. IN EACH MEMBER WITH 3d GALV. NAILS.

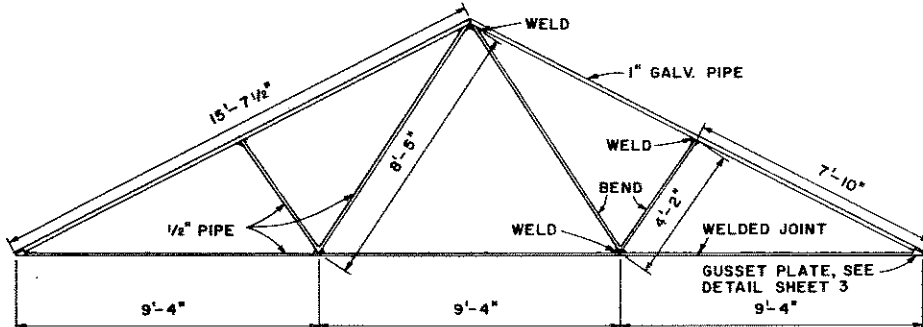
FILLER STRIP FOR FILM COVER, NOT NEEDED FOR FIBERGLASS COVER INSTEAD USE STEEL CORNER FLASHING.



CORNER DETAIL WOOD CONSTRUCTION

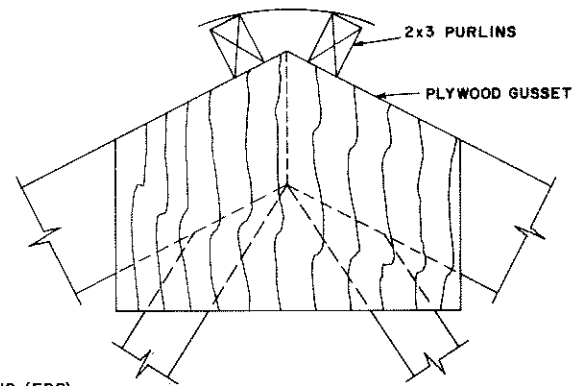


SECTION "A-A" WOOD CONSTRUCTION



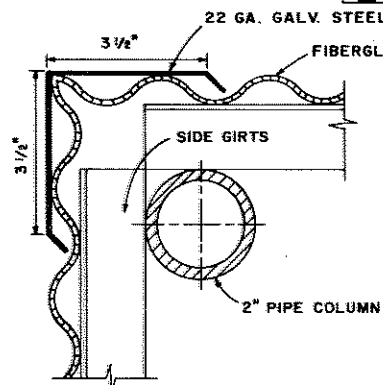
PIPE TRUSS LAYOUT WELDED CONSTRUCTION

SCALE: 3/8"=1'-0" 12" 6" 0" 1' 2' 3'

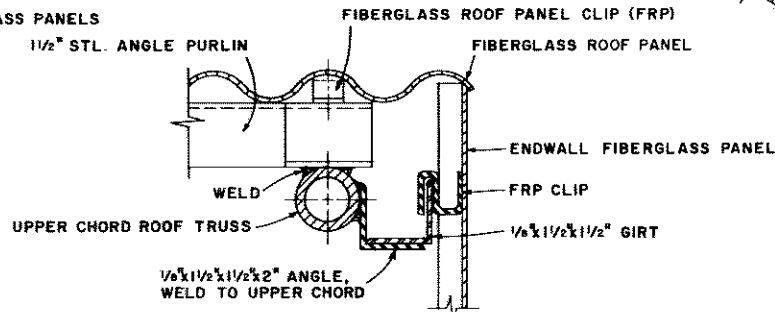


RIDGE DETAIL WOOD CONSTRUCTION

SCALE: 3/8"=1'-0" 6" 3" 4" 2" 1" 0"



CORNER DETAIL STEEL CONSTRUCTION



SECTION "A-A" STEEL CONSTRUCTION

SCALE: 6"=1'-0" UNLESS OTHERWISE NOTED 6" 3" 4" 2" 1" 0"

COOPERATIVE EXTENSION WORK IN AGRICULTURE AND HOME ECONOMICS		
AND UNITED STATES DEPARTMENT OF AGRICULTURE COOPERATING		
28' GREENHOUSE		
PA. '74	6185	SHEET 2 OF 3

