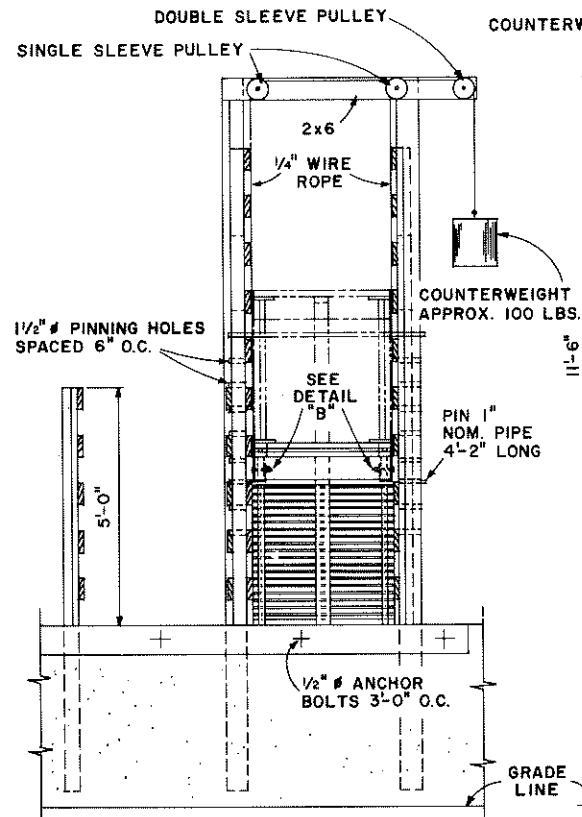
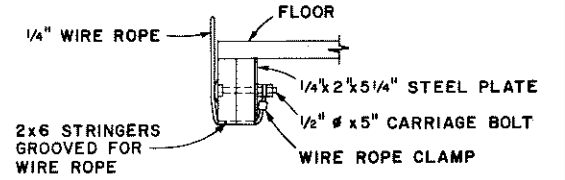
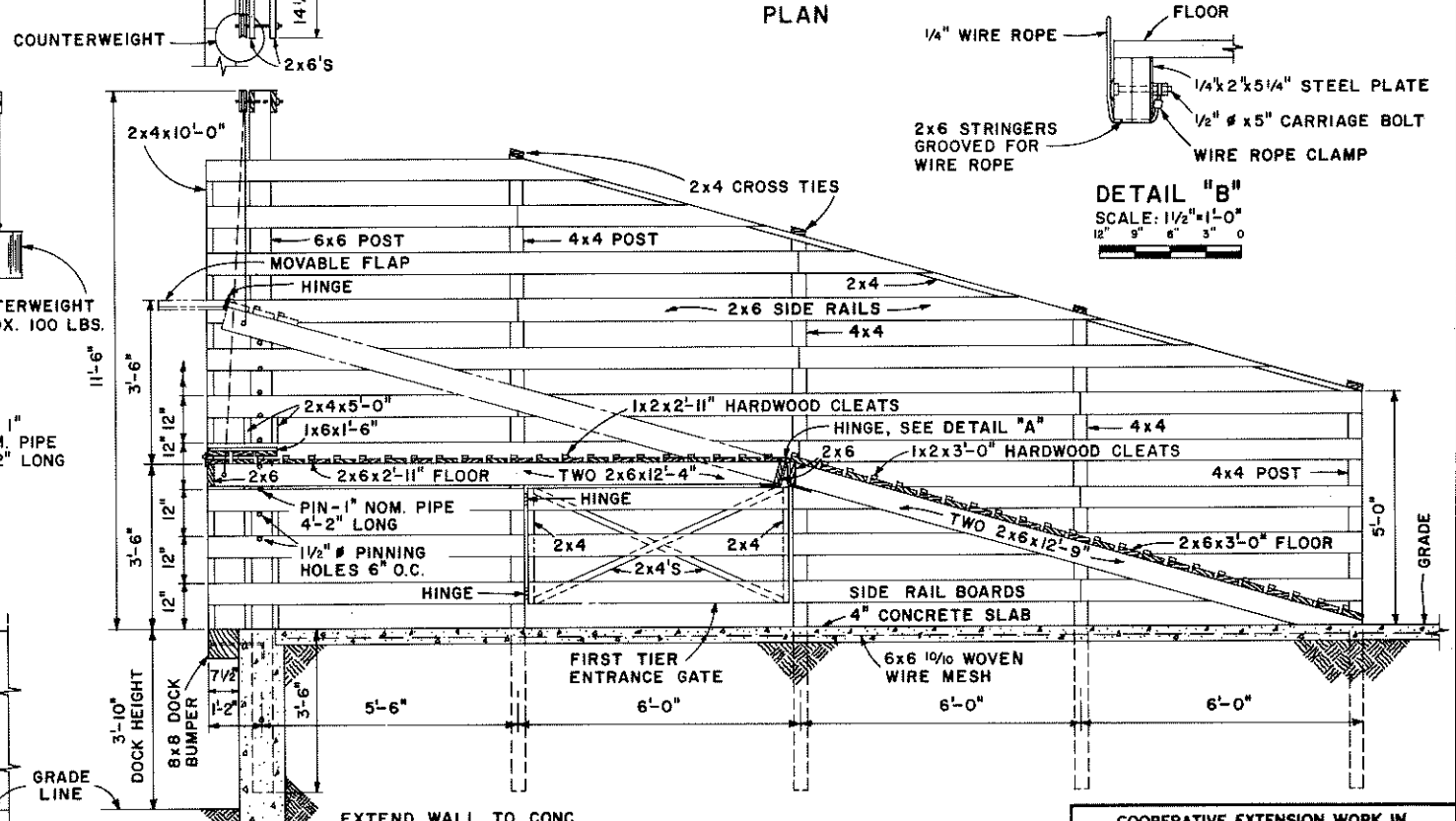


DETAIL "A"
 SCALE: $\frac{3}{4}" = 1'-0"$
 $12" \ 9" \ 6" \ 3" \ 0"$



NOTES:
 ALL WOOD SHOULD BE PRESSURE TREATED.
 SECOND TIER BOARDWALK MAY BE LIFTED TO PROVIDE MORE CLEARANCE AT FIRST TIER ENTRANCE. CLEATED MANWALK ON SIDE OF CHUTE MAY BE ADDED.



DETAIL "B"
 SCALE: $\frac{1}{2}" = 1'-0"$
 $12" \ 9" \ 6" \ 3" \ 0"$

NOTE:
 CONSULT LOCAL BUILDING CODE AUTHORITIES BEFORE STARTING CONSTRUCTION.

SCALE: $\frac{1}{2}" = 1'-0"$ UNLESS OTHERWISE NOTED.
 $12" \ 6" \ 0" \ 1" \ 2"$

COOPERATIVE EXTENSION WORK IN AGRICULTURE AND HOME ECONOMICS

AND UNITED STATES DEPARTMENT OF AGRICULTURE COOPERATING

3 TIER LOADING CHUTE

W. VA. '74 **6183** SHEET 1 OF 1