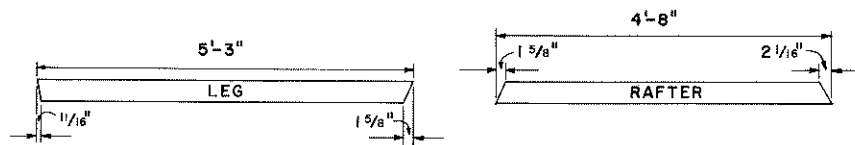
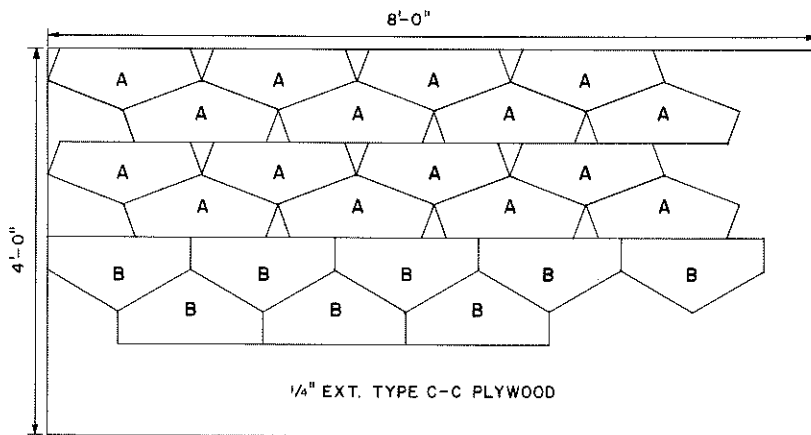
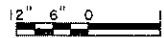


BASED ON: UNIV. OF ILL. CIR. 880 & RUTGERS PLAN NO. 158

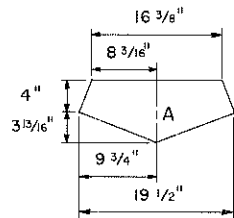
COOPERATIVE EXTENSION WORK IN AGRICULTURE AND HOME ECONOMICS			
AND UNITED STATES DEPARTMENT OF AGRICULTURE COOPERATING			
HOME GREENHOUSE			
N.J.	'74	6181	SHEET 1 OF 2



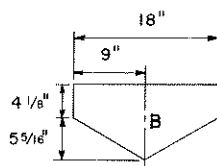
FRAME CUTTING LAYOUT (CUT FROM (8) 2x4x10')



PLYWOOD SHEET CUTTING DIAGRAM



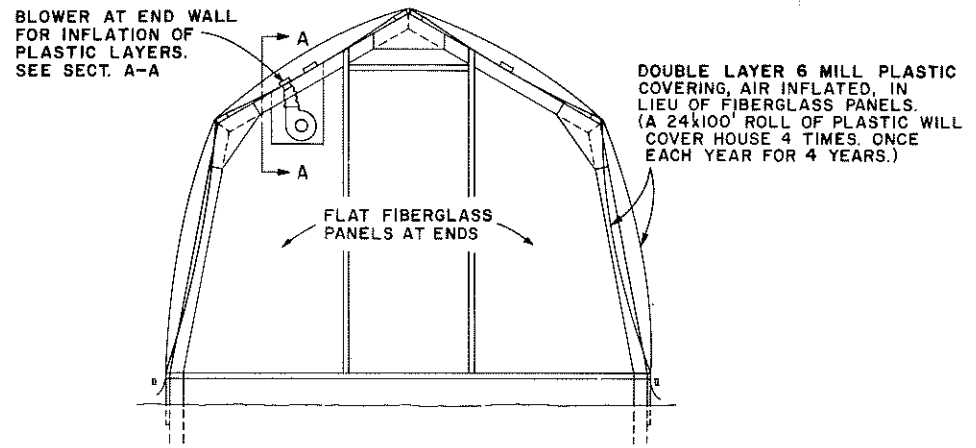
SIDE GUSSETS
16 REQ'D



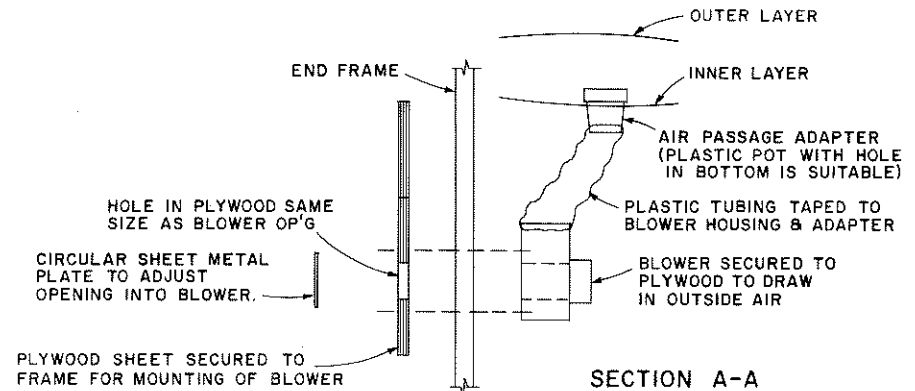
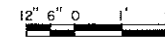
HEAD GUSSETS
8 REQ'D

BILL OF MATERIALS

- CORRUGATED FIBERGLASS REINFORCED PANELS (F.R.P.) *
5 OZ. COATING:
- ROOF PANELS (6) 2x10' CUT IN HALF
SIDE PANELS (5) 2x12', 2 SHEETS EACH SIDE
5 TH SHEET CUT LENGTHWISE
END PANELS (9) 2x8' OF WHICH 5 ARE LOCATED
AT END WITH NO DOOR
- RIDGE ROLL (1) 12' LENGTH
- LUMBER:
- (8) 2x4x10' TO MAKE FRAMES
 - (2) 2x4x10' SILL AT ENDS (P.T. COPPER NAPHTHENATE)
 - (2) 2x4x12' SILL AT SIDES (P.T. COPPER NAPHTHENATE)
 - (2) 2x4x16' END FRAMING
 - BENCH SUPPORTS NOT INCLUDED
 - (8) 3/4x4x12' FOR PURLINS & DOOR
 - (2) 4x4x16' P.T. POST FOR FOOTINGS
 - (2) 1x12x12' & (2) 1x12x10' REDWOOD BOARDS
 - (1) 4x8x1/4" EXTERIOR TYPE CC PLYWOOD SHEET FOR PLYWOOD GUSSETS. SEE CUTTING DIAGRAM.
- * CHECK WITH FIBERGLASS SUPPLIER FOR NECESSARY RELATED HARDWARE & COVERING INSTRUCTIONS.
NAILS, HINGES & LATCH.



ALTERNATE CROSS SECTION



SECTION A-A

ENVIRONMENTAL CONTROL

- HEATING:
TO MAINTAIN A TEMPERATURE DIFFERENCE OF 60° BETWEEN INSIDE & OUTSIDE
30,000 BTU/HR. SINGLE COVERING
20,000 BTU/HR. DOUBLE COVERING
CONNECTION TO HOME HEATING SYSTEM IS MOST DESIRABLE. IF NOT POSSIBLE, USE GAS OR OIL HEATER VENTED TO THE OUTSIDE. ELECTRIC HEATERS ARE EASY TO INSTALL, CLEAN, BUT EXPENSIVE TO OPERATE. WHEN USING OIL OR GAS, BE SURE TO PROVIDE A FRESH AIR SUPPLY DIRECTLY TO THE HEATER TO SUPPLY OXYGEN FOR COMBUSTION.
- VENTILATING:
REQUIRE A TWO SPEED FAN RATED AT 1000 CFM. AN AUTOMATIC AIR INLET OF 2 SQ. FT. IS REQUIRED. THE FAN CAN BE MOUNTED IN ONE GABLE END AND AIR INLET IN THE OTHER. BOTH SHOULD BE CONTROLLED BY A THERMOSTAT.
FOR MORE INFORMATION SEE USDA BULLETIN NUMBER 357 "BUILDING HOBBY GREENHOUSES."

COOPERATIVE EXTENSION WORK IN
AGRICULTURE AND HOME ECONOMICS

AND
UNITED STATES DEPARTMENT OF AGRICULTURE COOPERATING

HOME GREENHOUSE

N.J. '74 6181 SHEET 2 OF 2