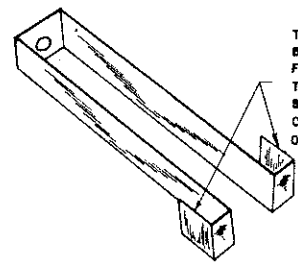
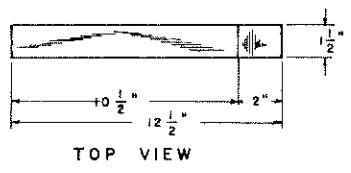
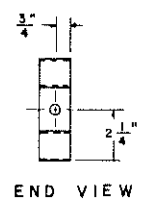
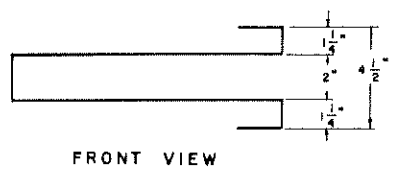


NOTE:  
SHACKLES SHOULD NOT BE MADE TILL AFTER SPRINGS ARE SECURED

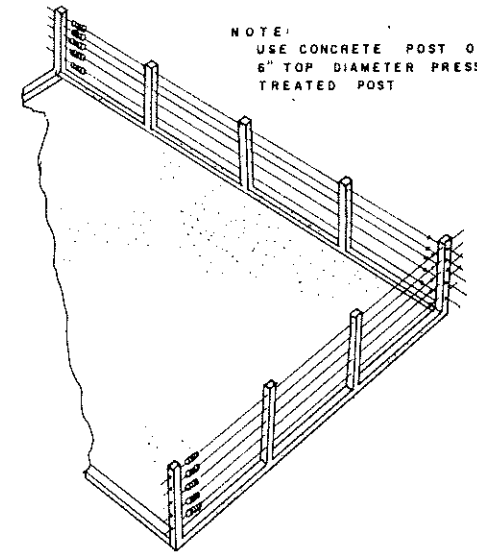
NOTE:  
1/2" GALVANIZED EYE BOLTS FOR USE ON END POSTS



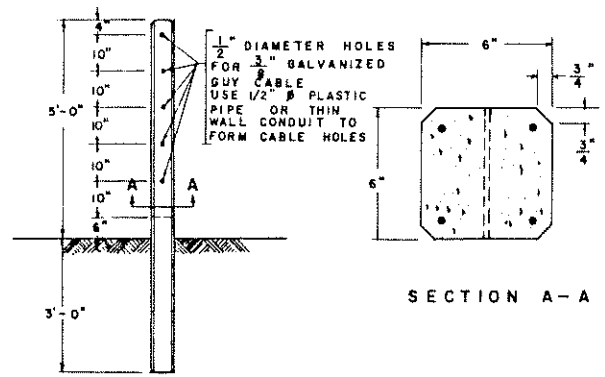
THE LEG OF SHACKLE SHOULD BE LONG ENOUGH TO COMPENSATE FOR THE SHAPE OF THE SPRING. TWO SHACKLES REQUIRED PER SPRING. SECOND SHACKLE MUST BE FORMED OVER SPRING END AFTER INSTALLATION OF THE FIRST SHACKLE.



NOTE:  
OUTSIDE DIAMETER OF AUTOMOBILE SPRING FROM SALVAGE SHOULD BE A MINIMUM OF 4"



NOTE:  
USE CONCRETE POST OR 6" TOP DIAMETER PRESSURE TREATED POST



NOTE:  
4 NO. 3 (3/8") RE-BARS PLACED IN THE CORNERS AND COVERED WITH A MINIMUM OF 3/4" OF CONCRETE AT ALL POINTS.

THE LARGEST SIZE AGGREGATE SHOULD BE 1/2"

BEVEL CORNERS BY PLACING 1/2" TRIANGULAR STRIP IN FORM



BASED ON: MISS. STATE UNIV. PLAN NO. 6961A

COOPERATIVE EXTENSION WORK IN AGRICULTURE AND HOME ECONOMICS  
DEPARTMENT OF AGRICULTURAL ENGINEERING  
UNIVERSITY OF MARYLAND  
AND  
UNITED STATES DEPARTMENT OF AGRICULTURE COOPERATING

CABLE FENCING

MISS. '73 EX. 6162 SHEET 1 OF 1