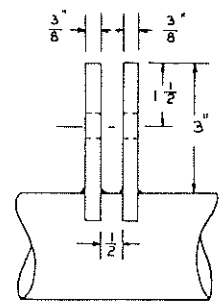
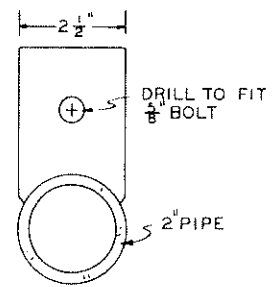


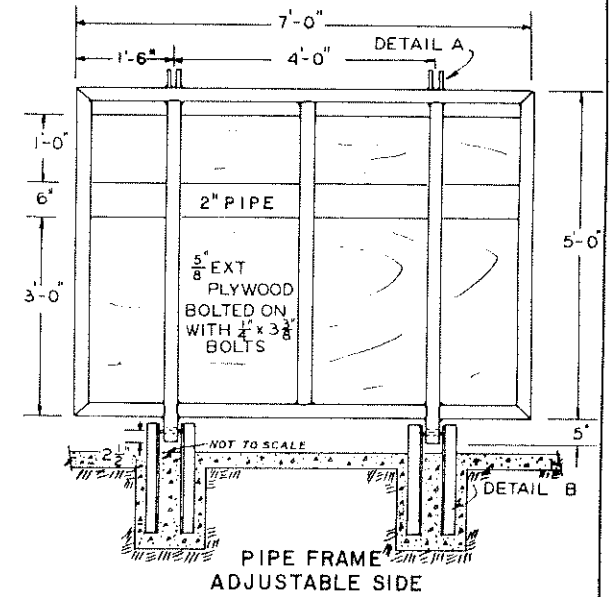
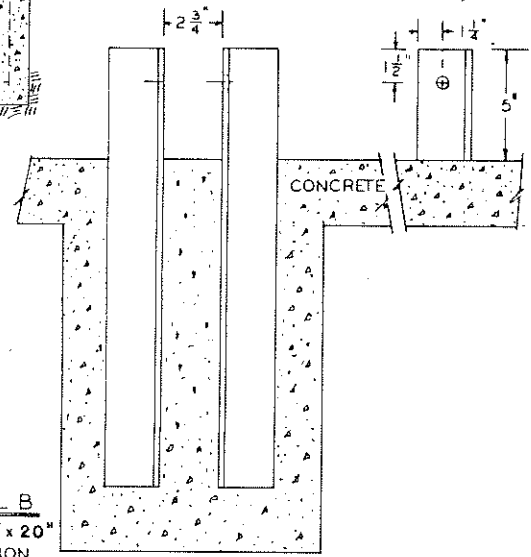
PERSPECTIVE



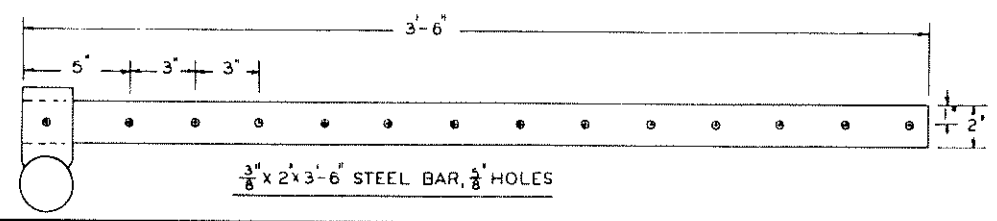
DETAIL A
HALF SIZE



DETAIL B
2 1/2 x 2 1/2 x 1/4 x 20"
ANGLE IRON



PIPE FRAME
ADJUSTABLE SIDE



3/8 x 2 x 3'-6" STEEL BAR, 5/8 HOLES

BASED ON: OREGON STATE UNIV.
PLAN NO BP 1110

COOPERATIVE EXTENSION WORK IN AGRICULTURE AND HOME ECONOMICS DEPARTMENT OF AGRICULTURAL ENGINEERING UNIVERSITY OF MARYLAND AND UNITED STATES DEPARTMENT OF AGRICULTURE COOPERATING		
CATTLE CHUTE ADJUSTABLE TYPE		
DRE.	'72	6153
		SHEET 1 OF 1