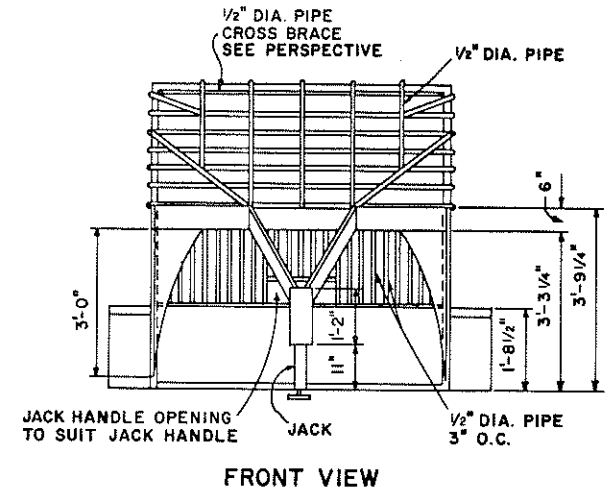
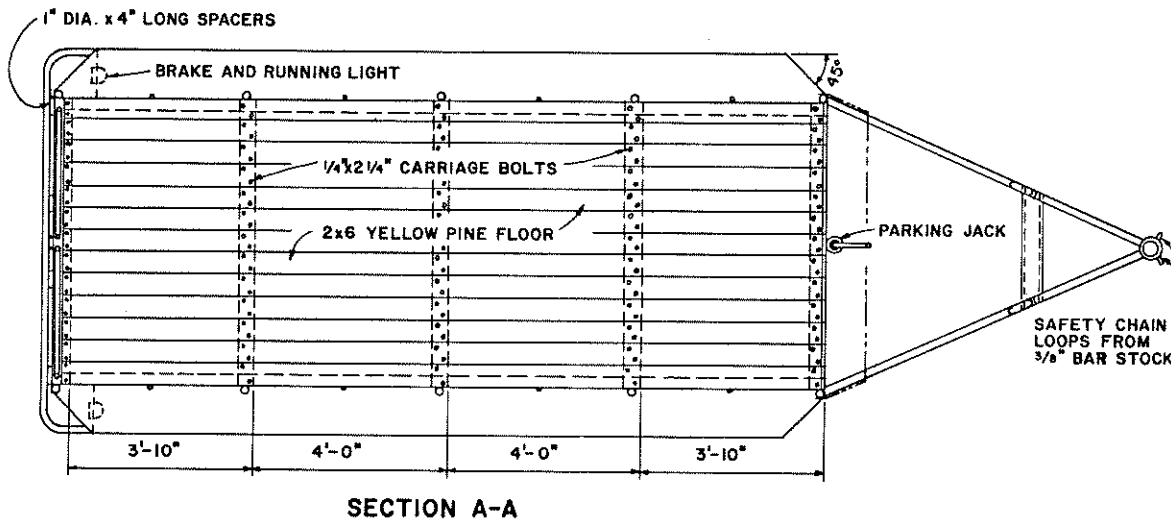


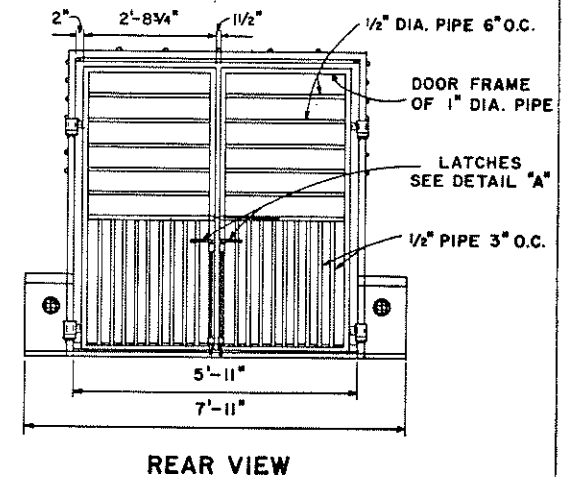
SIDE VIEW



FRONT VIEW



SECTION A-A



REAR VIEW

SCALE: 1/2" = 1'-0" UNLESS OTHERWISE NOTED

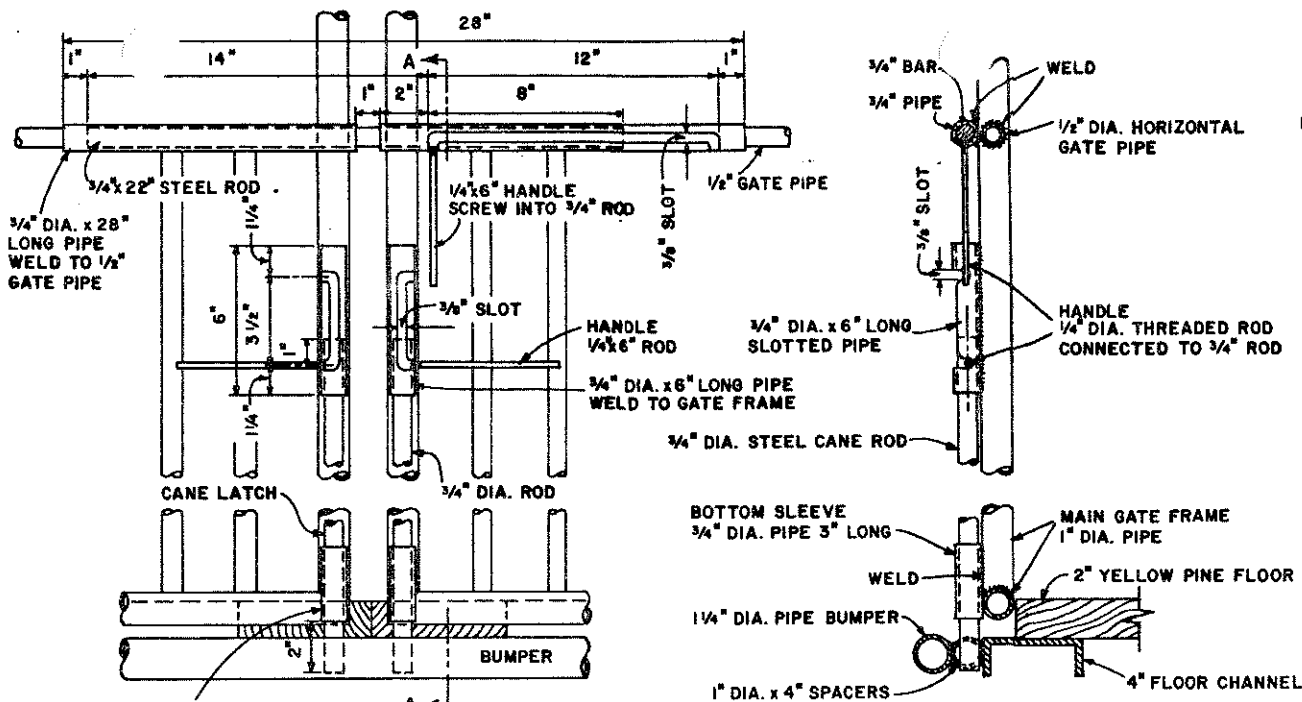
COOPERATIVE EXTENSION WORK IN AGRICULTURE AND HOME ECONOMICS

AND UNITED STATES DEPARTMENT OF AGRICULTURE COOPERATING

TRAILER FOR CATTLE GOOSENECK TYPE

TEXAS '72 6141 SHEET 1 OF 2

BASED ON: TEXAS A & M UNIV. PLAN NO. 551



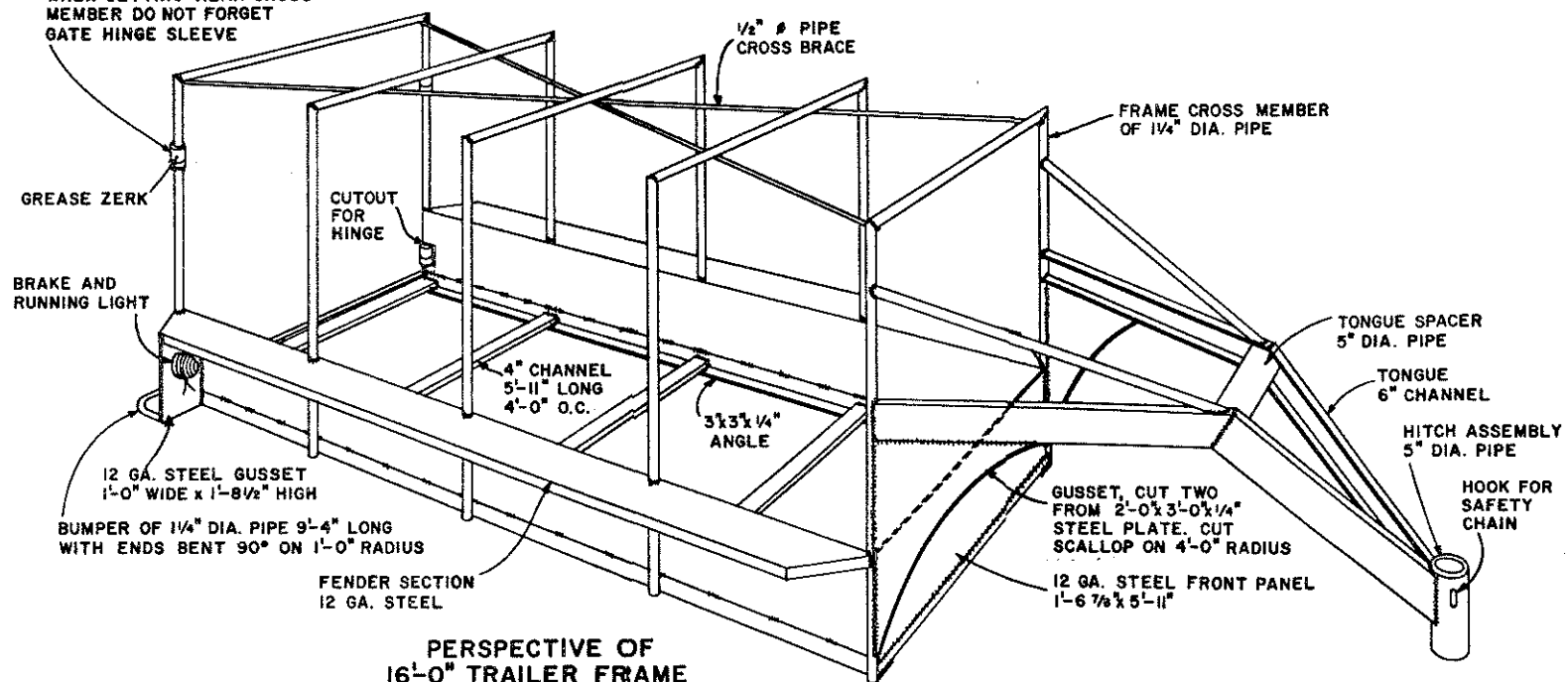
NOTE #1:
CHECK YOUR PICKUP OR TRUCK FOR THE DISTANCE BETWEEN OUTSIDE REAR BUMPER OR CORNER OF BED TO POINT OVER AXLE IN CENTER OF BED. MAKE THE DISTANCE BETWEEN HITCH AND TRAILER 2'-0" LONGER THAN YOUR MEASUREMENT. TO EXTEND INCREASE LENGTH OF THE DOWNWARD ANGLED 6" CHANNELS.

NOTE #2:
THE CARRIAGE ASSEMBLY OF YOUR CHOICE MAY BE USED IN TANDEM
1. STRAIGHT AXLE AND NO SPRINGS
2. STRAIGHT AXLE AND LEAF SPRINGS
3. FOR HIGHWAY USE MAINLY, A DROP AXLE MAY BE USED.

NOTE #3:
CAUTION: THE EXPECTED MAXIMUM LOAD WILL APPROACH 7 TONS. THEREFORE, SPECIFY EACH AXLE AND WHEEL ASSEMBLY TO CARRY 3 1/2 TONS HIGHWAY AND NON HIGHWAY USE, WHEN ORDERING FROM CARRIAGE MANUFACTURER. TIRES SHOULD BE 8 PLY AND MATCHED TO AXLE AND USE.
THIS DESIGN HEIGHT IS FOR CATTLE, IF HORSES ARE TO BE HAULED FREQUENTLY RAISE HEIGHT 6".

GATE LATCH
SCALE: 3"=1'-0"

NOTE:
WHEN SETTING REAR CROSS MEMBER DO NOT FORGET GATE HINGE SLEEVE



PERSPECTIVE OF 16'-0" TRAILER FRAME

COOPERATIVE EXTENSION WORK IN AGRICULTURE AND HOME ECONOMICS
STATE OF NORTH DAKOTA
NORTH DAKOTA STATE UNIVERSITY
OF AGRICULTURE AND APPLIED SCIENCE
AND
UNITED STATES DEPARTMENT OF AGRICULTURE COOPERATING

TRAILER FOR CATTLE GOOSENECK TYPE

TEXAS '72	6141	SHEET 2 OF 2
-----------	------	--------------