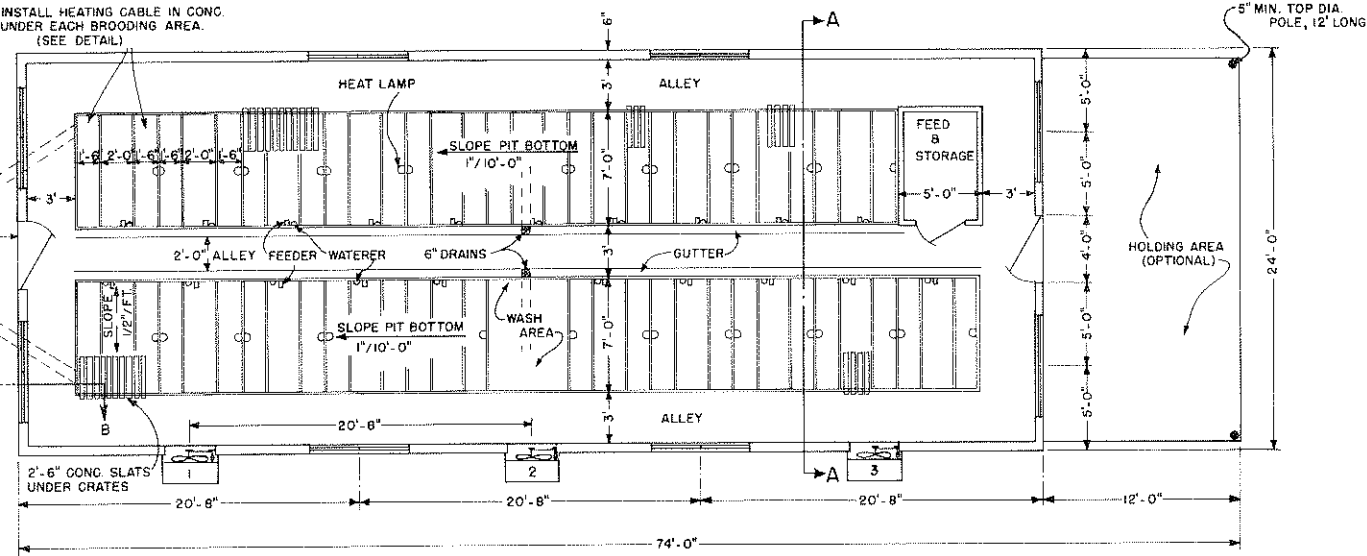
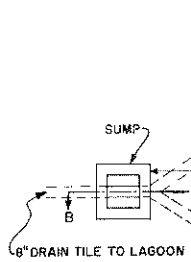


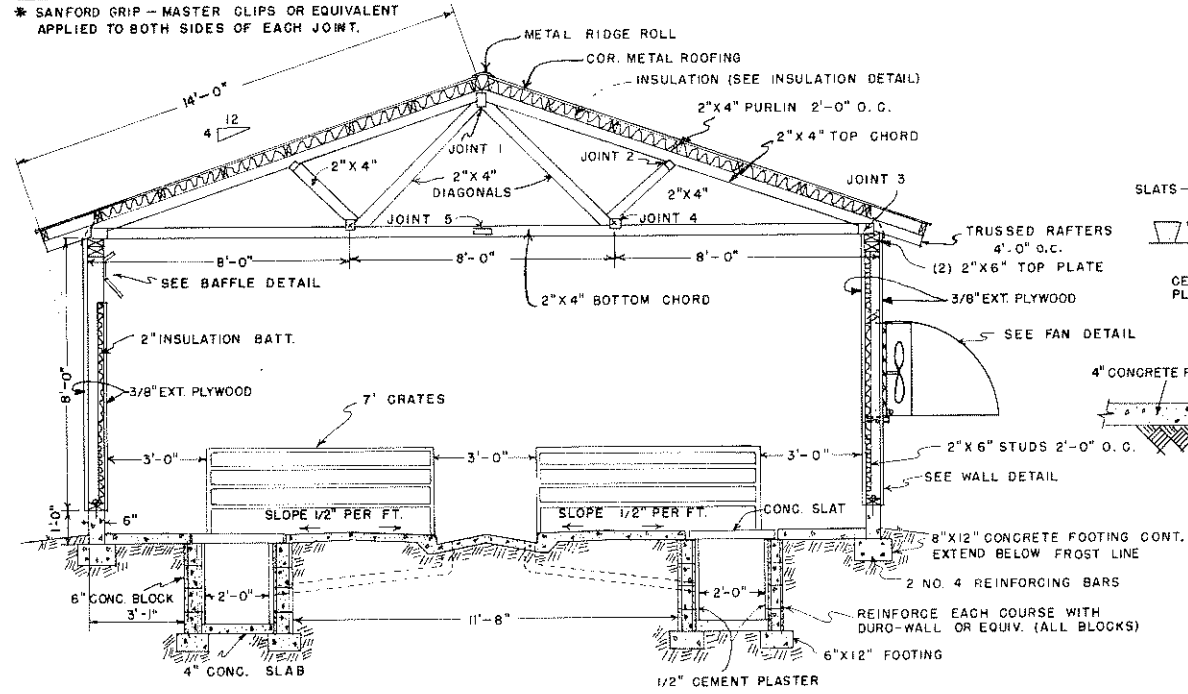
INSTALL HEATING CABLE IN CONC. UNDER EACH BROODING AREA. (SEE DETAIL)



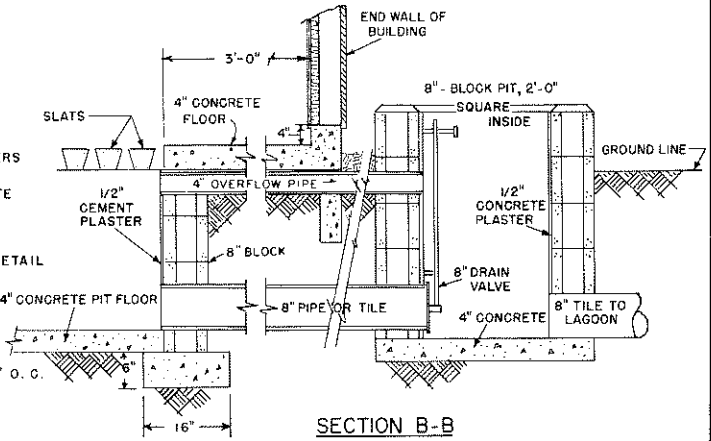
JOINT NO.	CLIP NO. *
JOINT-1	520 (5X4)
JOINT-2	26 (2X3)
JOINT-3	318 (3X6)
JOINT-4	312 (3X4)
JOINT-5	318 (3X5)

* SANFORD GRIP - MASTER CLIPS OR EQUIVALENT APPLIED TO BOTH SIDES OF EACH JOINT.

PLAN VIEW
SCALE: 0 2 4 6 8 FT.



SECTION A-A
SCALE: 0 1 2 3 4 FT.



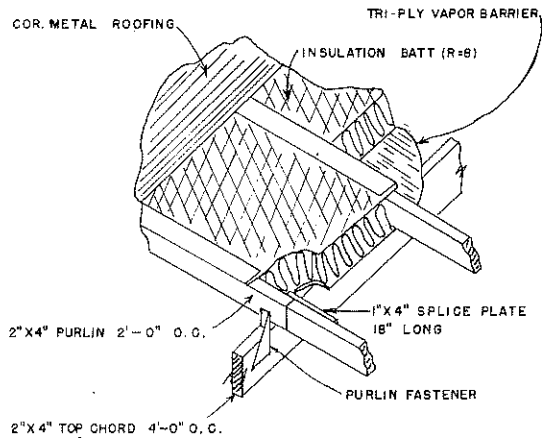
SECTION B-B

COOPERATIVE EXTENSION WORK IN
AGRICULTURE AND HOME ECONOMICS
DEPARTMENT OF AGRICULTURAL ENGINEERING
UNIVERSITY OF MARYLAND
AND
UNITED STATES DEPARTMENT OF AGRICULTURE COOPERATING

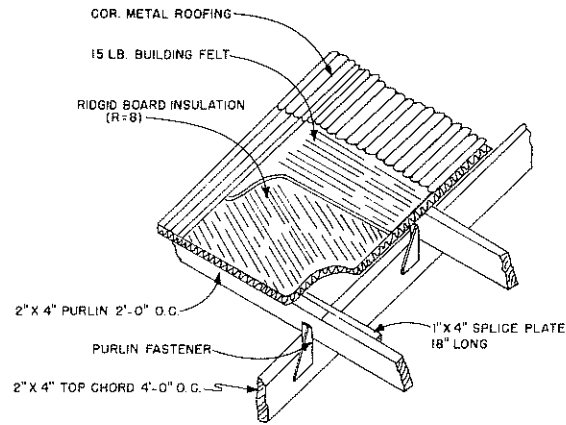
**FARROWING HOUSE FOR SWINE
ENVIRONMENTALLY CONTROLLED**

ALA '71	6130	SHEET 1 OF 3
---------	------	--------------

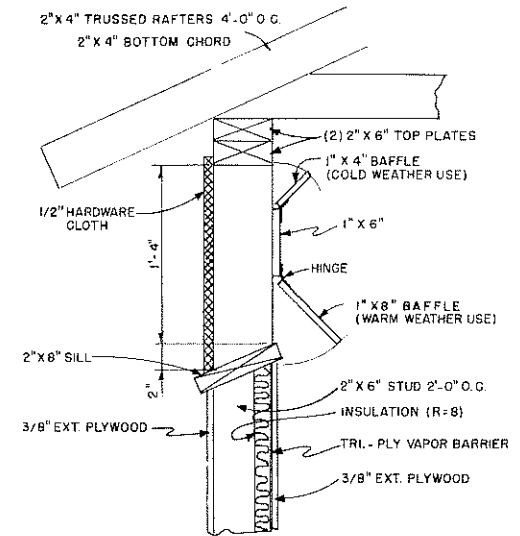
BASED ON:
AUBURN UNIV. PLAN NO. J-117



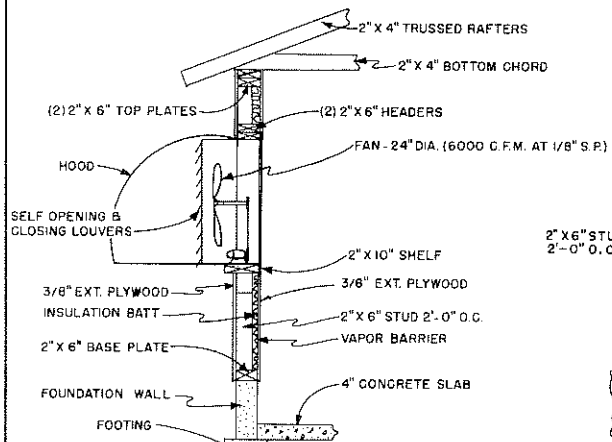
INSULATION DETAIL



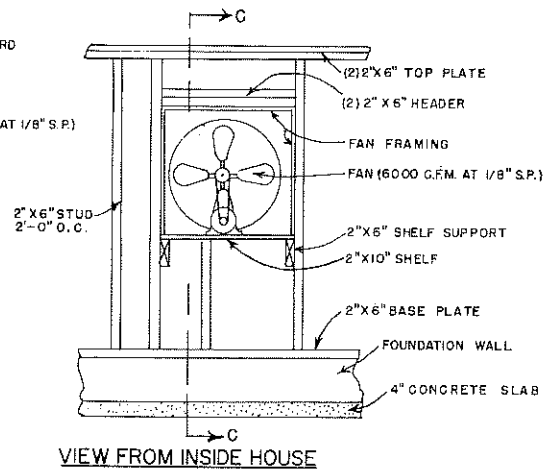
ALTERNATE INSULATION DETAIL



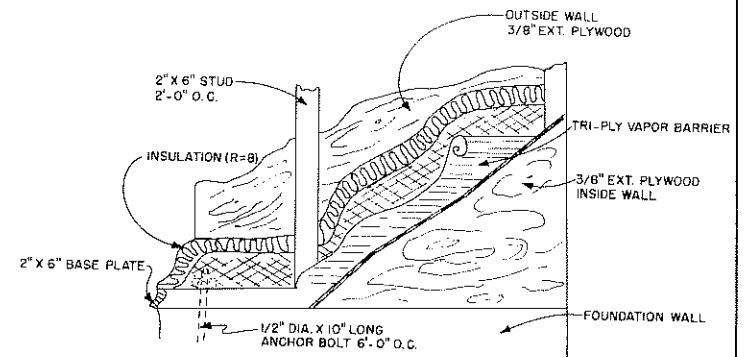
BAFFLE DETAIL



SECTION C-C
FAN DETAILS



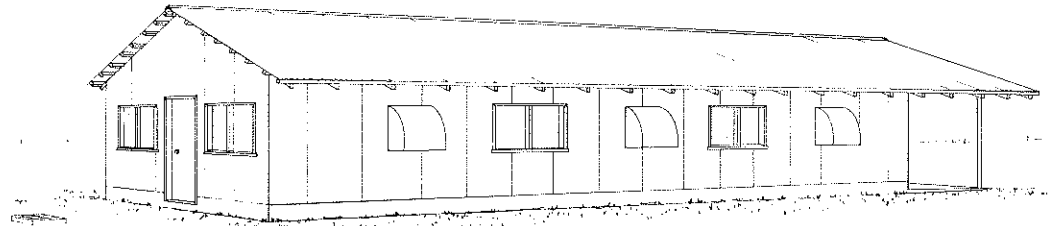
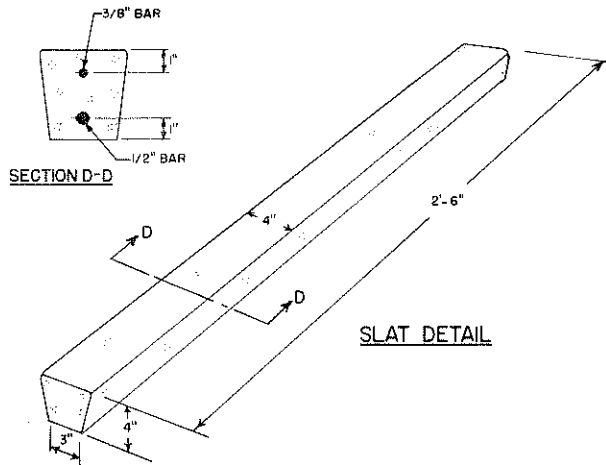
VIEW FROM INSIDE HOUSE



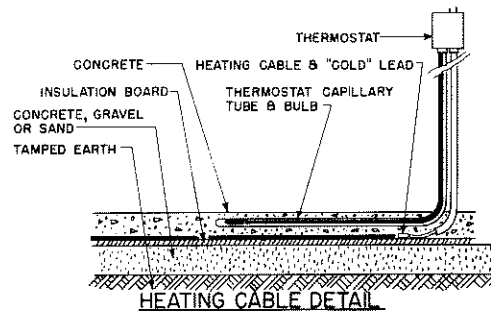
WALL CONSTRUCTION DETAIL

CO-OPERATIVE EXTENSION WORK IN
AGRICULTURE AND HOME ECONOMICS
DEPARTMENT OF AGRICULTURAL ENGINEERING
UNIVERSITY OF MARYLAND
AND
NATIONAL STATES DEPARTMENT OF AGRICULTURE COOPERATING
FARROWING HOUSE FOR SWINE
ENVIRONMENTALLY CONTROLLED

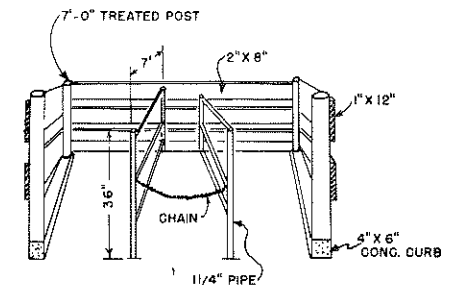
A.L.A. '71 6130 SHEET 2 OF 3



PERSPECTIVE



HEATING CABLE DETAIL



DETAIL OF WASH AREA

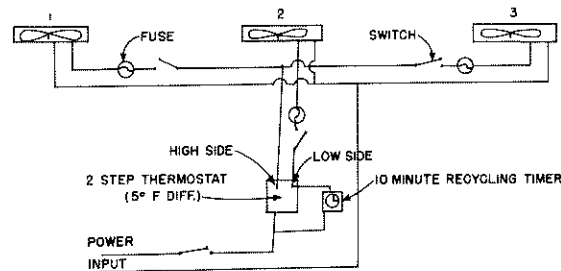
VENTILATION SYSTEM OPERATION

WARM WEATHER:

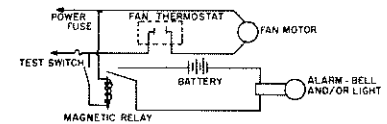
FAN 2 CONTROLLED BY LOW SIDE OF 5° DIFFERENTIAL STEP THERMOSTAT, FANS 1 AND 3 CONTROLLED BY HIGH SIDE.

COLD WEATHER:

USE TIME CLOCK TO OPERATE FAN 2 APPROXIMATELY 20% OF TIME (2 MIN. IN 10) FOR MOISTURE REMOVAL, AND TO MAINTAIN HUMIDITY AT 55-70% IN BUILDING. MAINTAIN TEMPERATURES AT 60-70° F.



SCHEMATIC DIAGRAM FOR WIRING OF VENTILATION SYSTEM



BATTERY OPERATED RELAY CONTROLLED ALARM

COOPERATIVE EXTENSION WORK IN
 AGRICULTURE AND HOME ECONOMICS
 DEPARTMENT OF AGRICULTURAL ENGINEERING
 UNIVERSITY OF MARYLAND
 AND
 UNITED STATES DEPARTMENT OF AGRICULTURE COOPERATING
FARROWING HOUSE FOR SWINE
 ENVIRONMENTALLY CONTROLLED

ALA.	'71	6130	SHEET 3 OF 3
------	-----	------	--------------