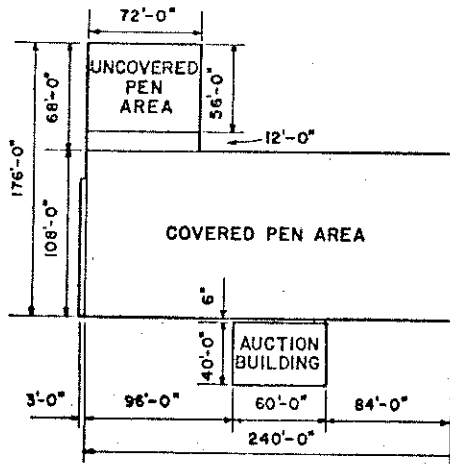
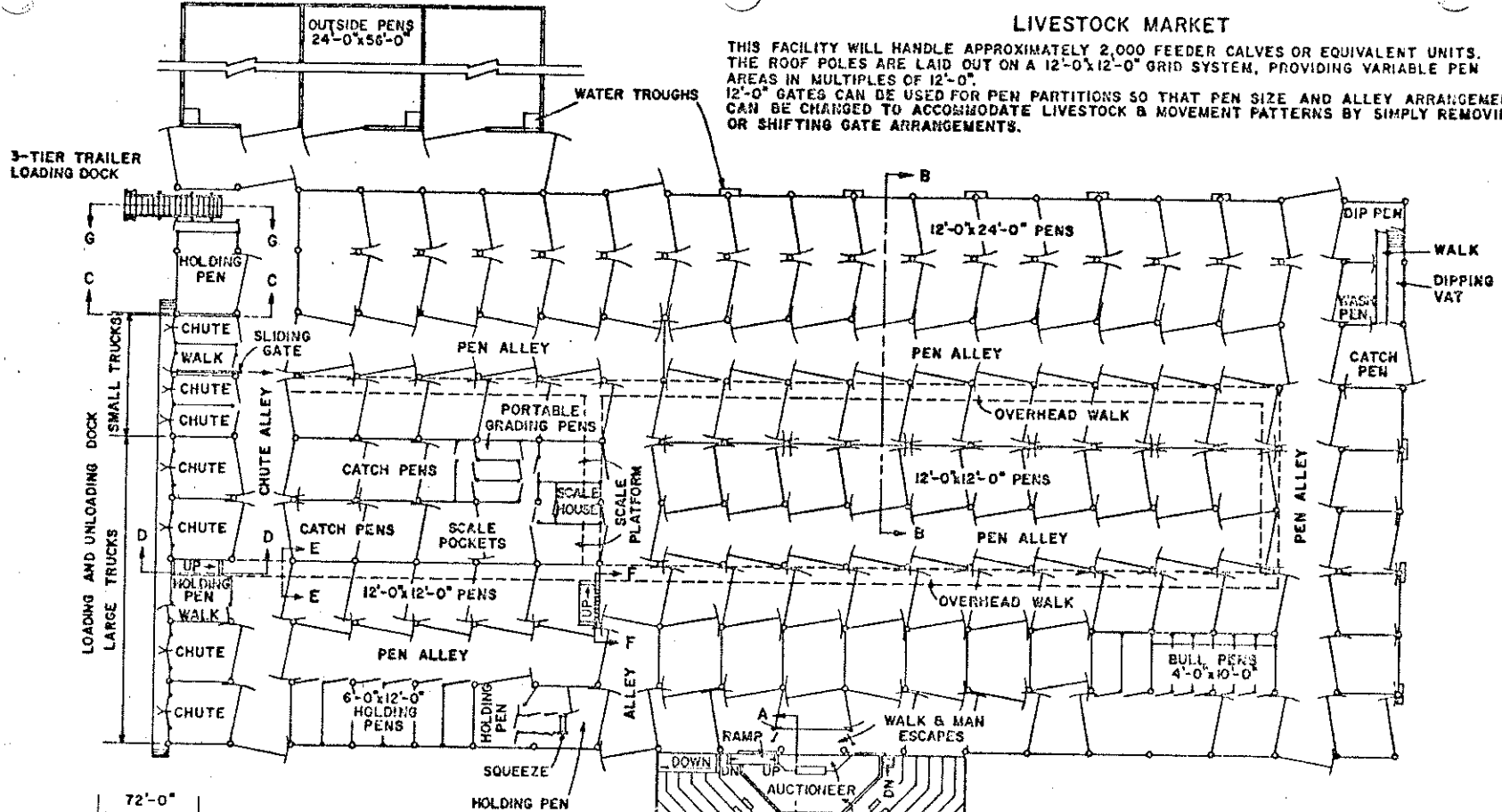
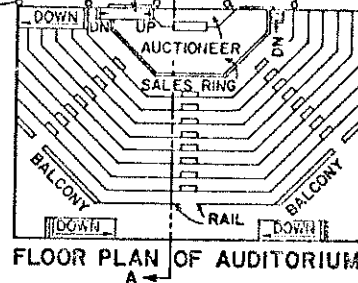


LIVESTOCK MARKET

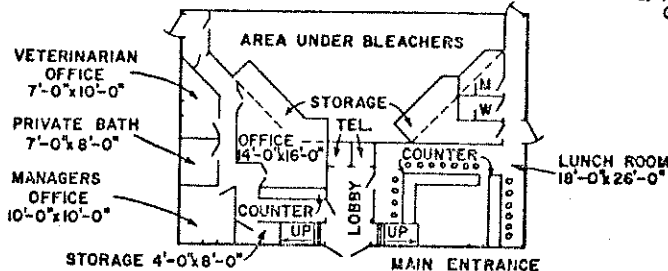
THIS FACILITY WILL HANDLE APPROXIMATELY 2,000 FEEDER CALVES OR EQUIVALENT UNITS. THE ROOF POLES ARE LAID OUT ON A 12'-0" X 12'-0" GRID SYSTEM, PROVIDING VARIABLE PEN AREAS IN MULTIPLES OF 12'-0". 12'-0" GATES CAN BE USED FOR PEN PARTITIONS SO THAT PEN SIZE AND ALLEY ARRANGEMENTS CAN BE CHANGED TO ACCOMMODATE LIVESTOCK & MOVEMENT PATTERNS BY SIMPLY REMOVING OR SHIFTING GATE ARRANGEMENTS.



LOT PLAN



FLOOR PLAN OF AUDITORIUM

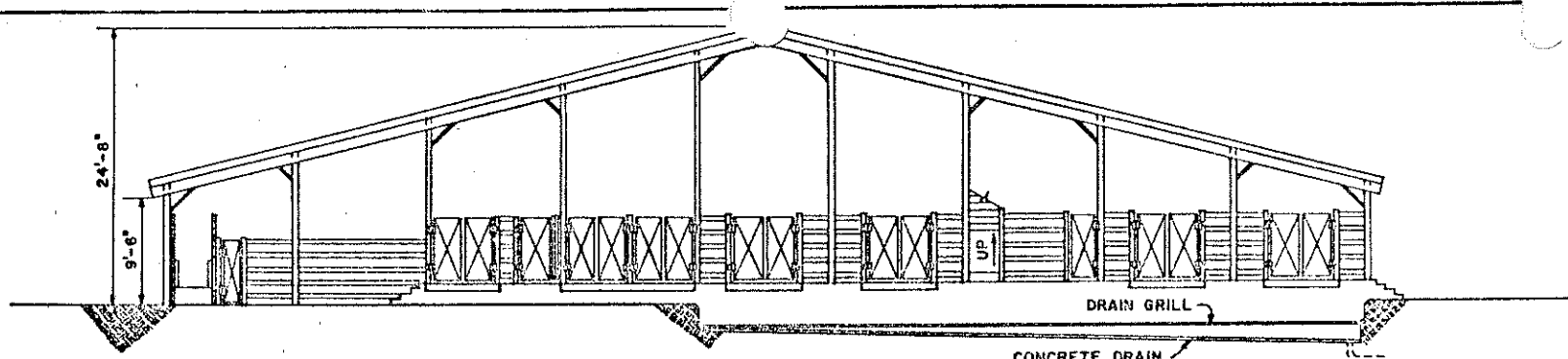


FLOOR PLAN OF FIRST FLOOR

NOTES:

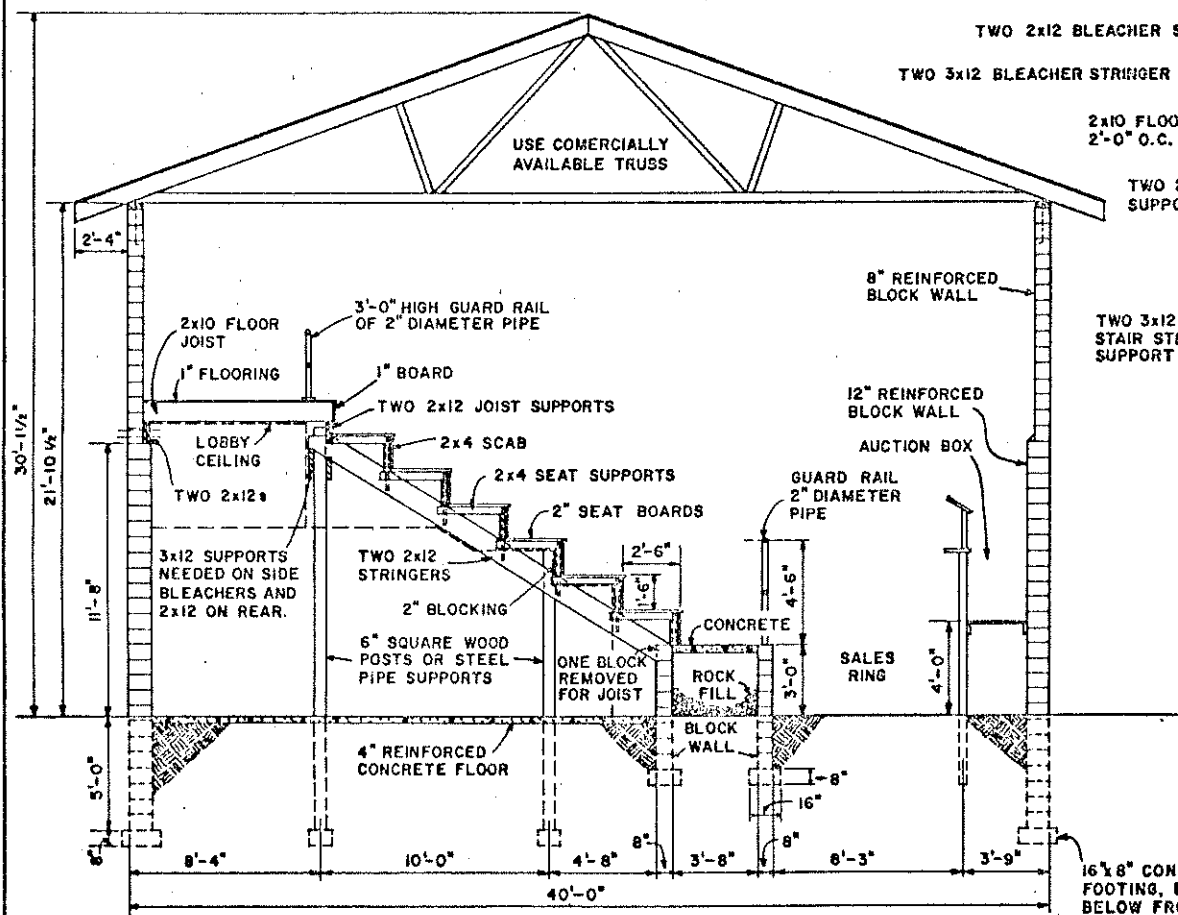
- 1) ALL ALLEYS ARE 12'-0" WIDE.
- 2) NUMBER AND SIZE OF PENS:
HOLDING PENS: 16, 12'-0" x 24'-0"; 54, 12'-0" x 12'-0"; 8, 6'-0" x 12'-0";
BULL PENS: 6, 4'-0" x 10'-0";
OUTSIDE PENS: 3, 24'-0" x 56'-0"
- 3) GATES ON SIDES OF 12'-0" & 24'-0" PENS PROVIDE MEANS FOR EASY MECHANICAL CLEANING.
- 4) AUDITORIUM SEATING CAPACITY, APPROXIMATELY 300.
- 5) CHECK LOCAL & STATE ZONING, HEALTH & POLLUTION CODES BEFORE CONSTRUCTION OF ANIMAL FACILITY.
- 6) ALL POLES AND OTHER WOOD IN CONTACT WITH THE GROUND OR MANURE TO BE TREATED WITH PRESERVATIVE.

COOPERATIVE EXTENSION WORK IN AGRICULTURE AND HOME ECONOMICS		
AND UNITED STATES DEPARTMENT OF AGRICULTURE COOPERATING		
LIVESTOCK MARKET		
W. VA.	'71	6129
		SHEET 1 OF 6

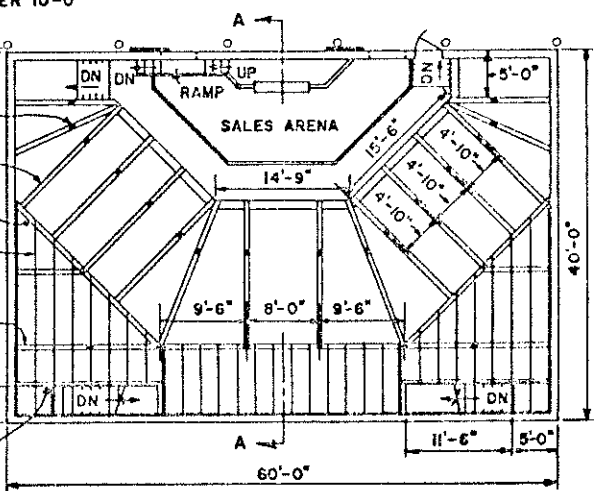


END ELEVATION
LOADING AND UNLOADING DOCK

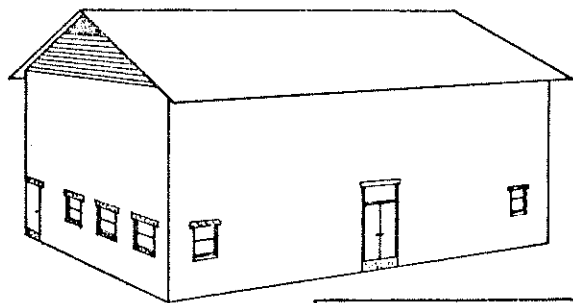
CONCRETE DRAIN
SLOPE 4" PER 10'-0"



SECTION A-A



AUDITORIUM
LOCATION OF BLEACHER & JOIST SUPPORTS



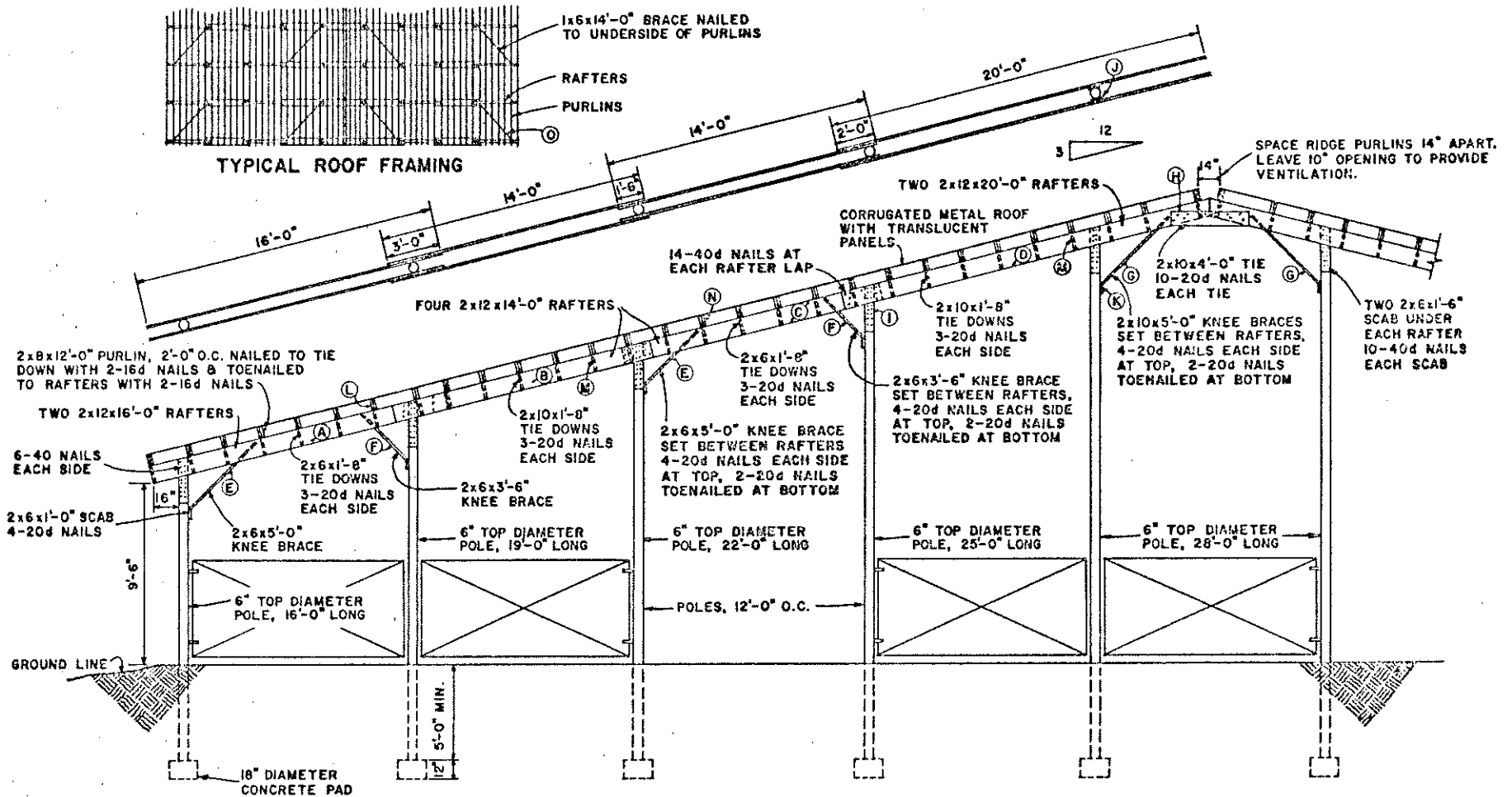
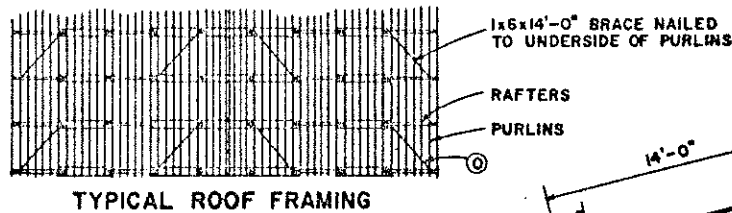
PERSPECTIVE OF
AUCTION BUILDING

COOPERATIVE EXTENSION WORK IN
AGRICULTURE AND HOME ECONOMICS

AND
UNITED STATES DEPARTMENT OF AGRICULTURE COOPERATING

LIVESTOCK MARKET

W. VA. '71 6129 SHEET 2 OF 6



SECTION B-B

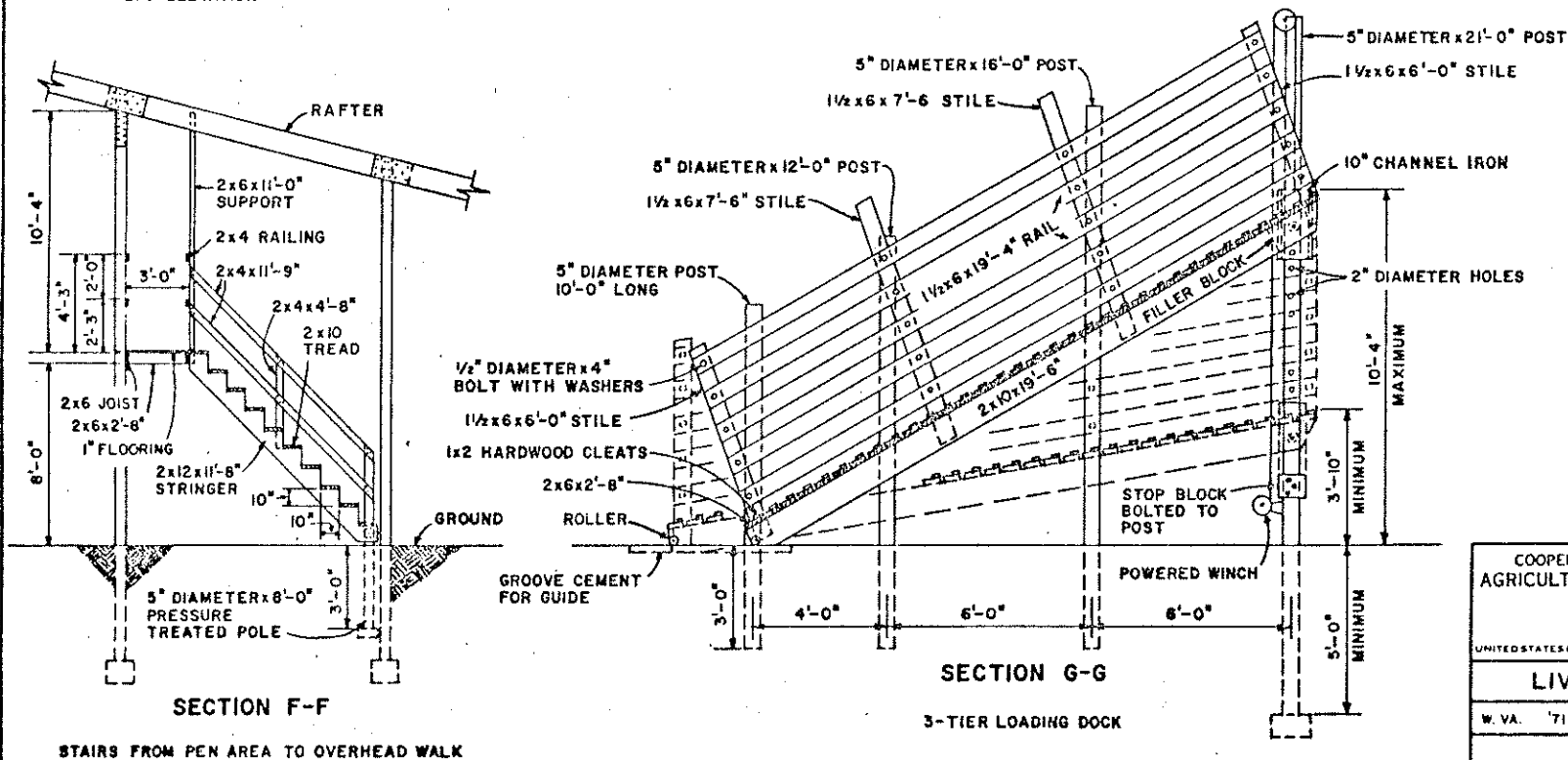
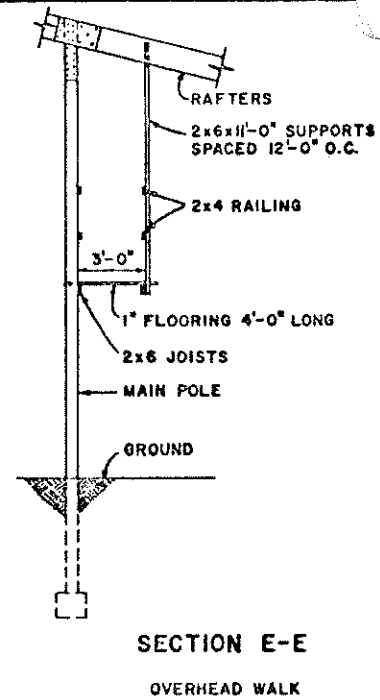
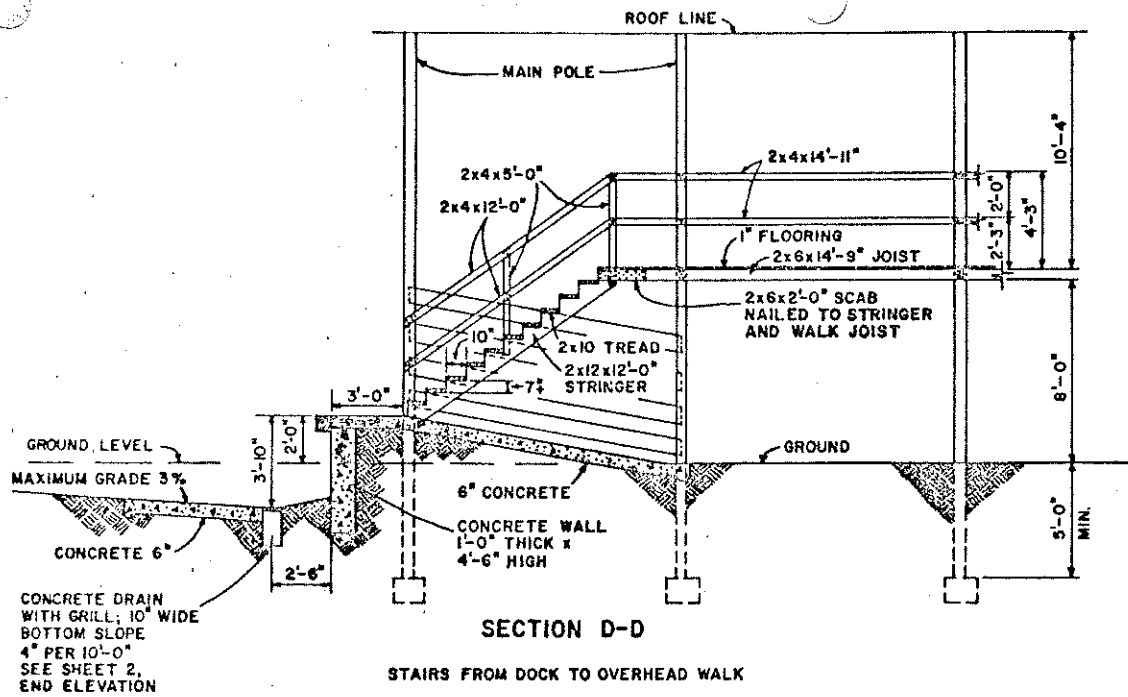
KEY	MEMBER	CUT SIZE	NO.	FULL SIZE	NO.	FBM	TOTAL FBM FOR ROOF INCLUDING PURLINS
A	RAFTER	-	4	2x12x16'-0"	4	128	21 RAFTERS x 764 FBM / RAFTER 16,044
B	RAFTER	-	4	2x12x14'-0"	4	112	N PURLIN 2x8x12'-0" x 1150 18,560
C	RAFTER	-	4	2x12x14'-0"	4	112	O ROOF BRACE 1x6x14'-0" x 44 308
D	RAFTER	-	4	2x12x20'-0"	4	160	TOTAL FBM 34,912
E	KNEE BRACE	2x6x5'-0"	4	2x6x18'-0"	2	36	
F	KNEE BRACE	2x6x3'-6"	4	2x6x18'-0"	2	36	
G	KNEE BRACE	2x10x5'-0"	2	2x10x18'-0"	1	30	
H	RIDGE TIE	2x10x4'-0"	2	2x10x18'-0"	1	30	
I	RAFTER SCAB	2x10x1'-6"	20	2x6x16'-0"	2	32	
J	RAFTER SPACER	2x6x2'-6"	4	2x6x10'-0"	1	10	
K	BRACE SCAB	2x6x1'-0"	10	2x6x10'-0"	1	10	
L	PURLIN TIE DOWN	2x6x1'-8"	30	2x6x10'-0"	5	50	
M	PURLIN TIE DOWN	2x10x1'-8"	28	2x10x10'-0"	5	84	
TOTAL LUMBER FOR ONE FULL RAFTER					764	FBM	

COOPERATIVE EXTENSION WORK IN
AGRICULTURE AND HOME ECONOMICS

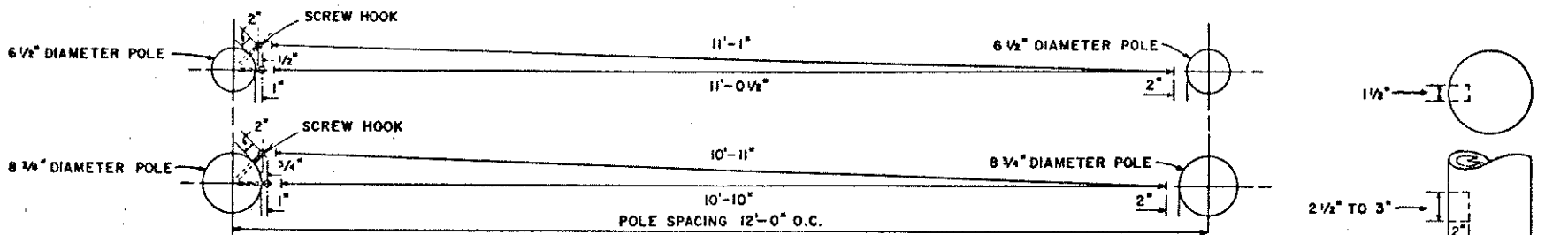
AND
UNITED STATES DEPARTMENT OF AGRICULTURE COOPERATING

LIVESTOCK MARKET

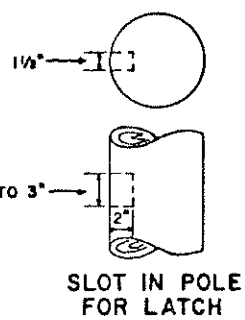
W. VA. '71 6129 SHEET 3 OF 6



COOPERATIVE EXTENSION WORK IN AGRICULTURE AND HOME ECONOMICS		
AND UNITED STATES DEPARTMENT OF AGRICULTURE COOPERATING		
LIVESTOCK MARKET		
W. VA.	'71	6129
		SHEET 4 OF 8

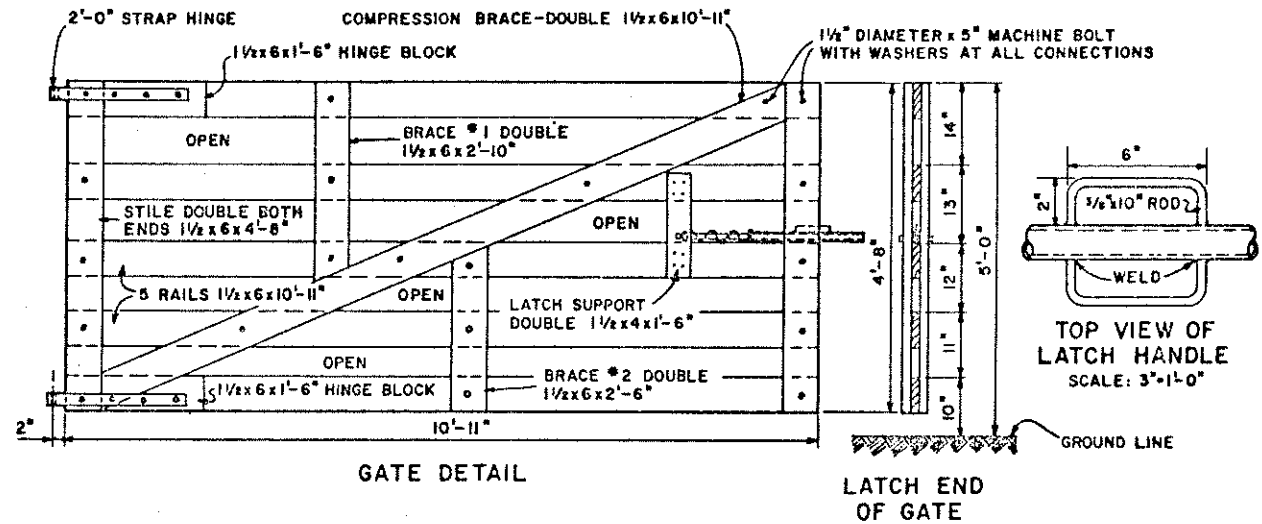


GATE LENGTHS
EFFECT OF POLE SIZE AND LOCATION OF GATE SCREW HOOKS ON GATE LENGTH VARIATION



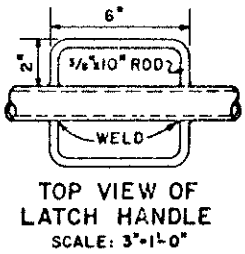
BILL OF MATERIALS

- LUMBER**
7 PIECES 1/2x6x16'-0"
1 PIECE 1/2x4x3'-0"
- HARDWARE**
18-1/4" DIAMETER x 5" MACHINE BOLTS WITH WASHERS
1 PAIR 2'-0" STRAP HINGE WITH BOLTS & SCREW HOOKS
1 PIECE 1/2" DIAMETER x 2'-0" GALVANIZED PIPE
1 PIECE 1" DIAMETER x 1'-8" GALVANIZED PIPE
1 PIECE 1 1/2" WASHER WITH 1/4" DIAMETER HOLE
1 PIECE 2" WASHER WITH 1/4" DIAMETER HOLE
1 PIECE 1/4" DIAMETER x 5" MACHINE BOLT WITH WASHER
2 PIECES 3/8" DIAMETER x 10" ROD, BENT FOR LATCH HANDLE
1 PIECE 1/4"x1'6" STRAP IRON
1 PIECE 1" I.D. COMPRESSION SPRING,
14" FREE LENGTH,
4" COMPRESSED LENGTH,
2" PER INCH K,
TOTAL FBM 86



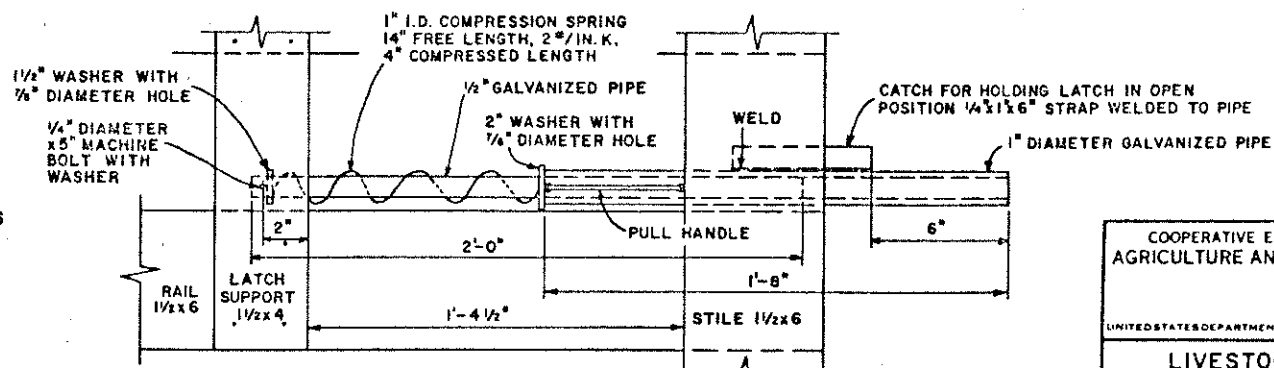
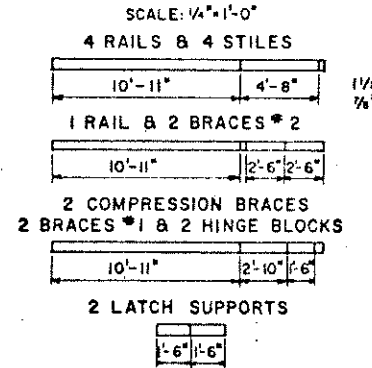
GATE DETAIL

LATCH END OF GATE

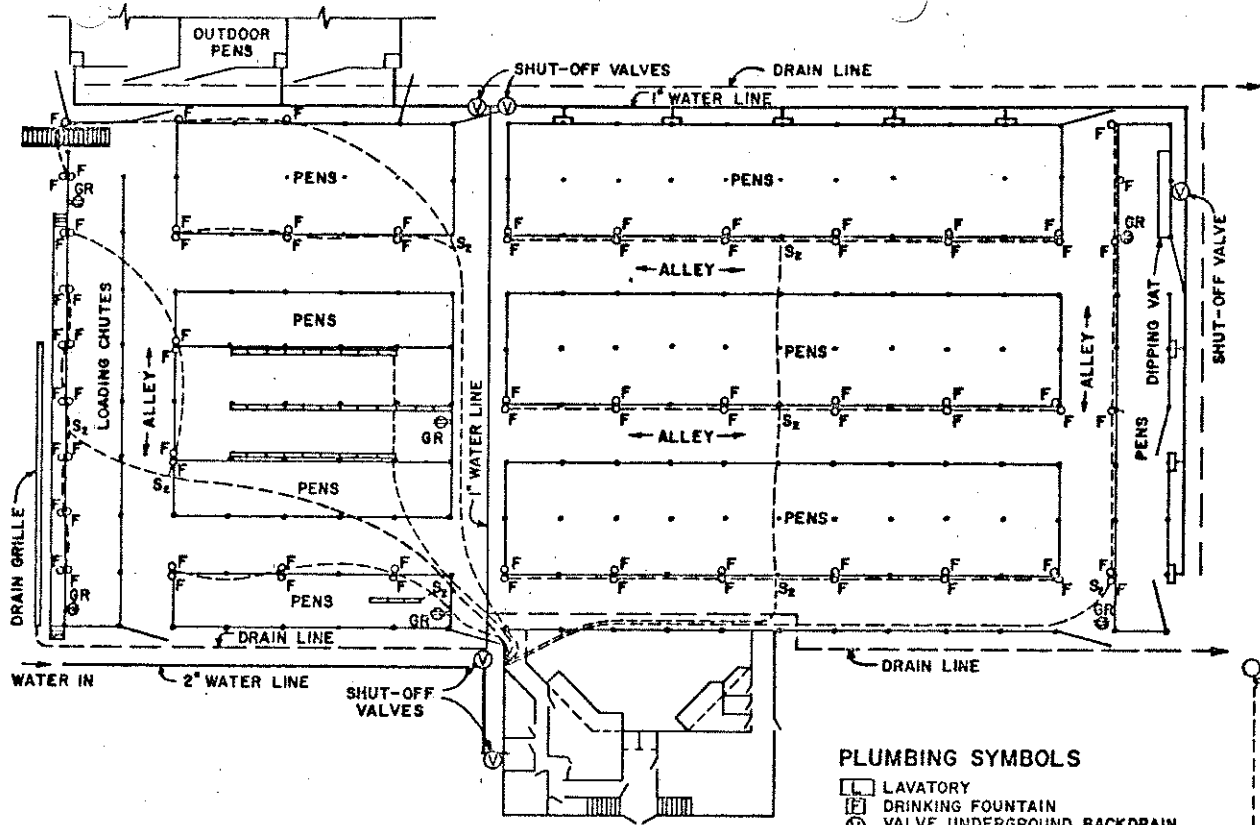


TOP VIEW OF LATCH HANDLE
SCALE: 3"-1'-0"

LUMBER CUTTING SCHEDULE



LATCH DETAIL



ELECTRICAL, WATER LINE AND DRAIN LAYOUT FOR PEN AREA ONLY

PLUMBING SYMBOLS

- LAVATORY
- DRINKING FOUNTAIN
- VALVE UNDERGROUND BACKDRAIN (MAIN SHUT-OFF)
- HOT WATER TANK
- SPIGOT
- SHOWER
- KITCHEN SINK
- HOT WATER LINE
- COLD WATER LINE
- SEWER LINE

NOTES

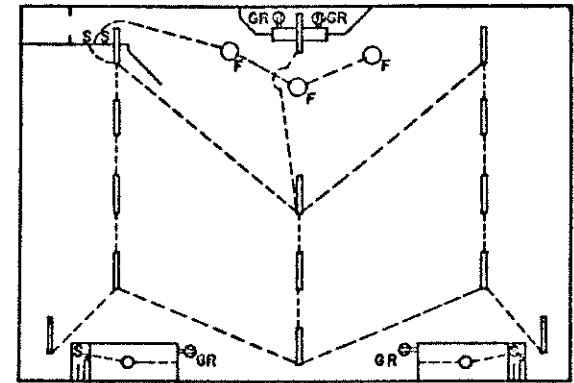
1. FREEZE-PROOF OUTSIDE SPIGOT
2. INSTALL WATER LINES IN CEILING

ELECTRICAL SYMBOLS

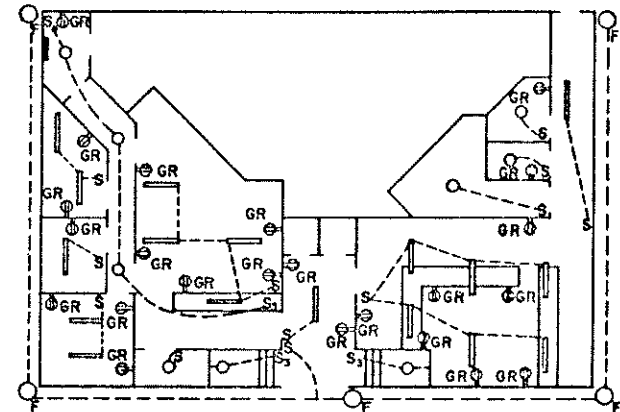
- REFLECTOR FLOOD LAMPS, 300 WATT
- INCANDESCENT LAMPS, 75 OR 100 WATT
- GROUNDED TYPE CONVENIENCE OUTLET
- FLUORESCENT LAMP, 2 BULBS, 40 WATT
- FLUORESCENT LIGHTING OUTLET, 60 WATT, 3 ROWS, 9 LAMPS PER ROW
- S.P.S.T. SWITCH
- D.P.S.T. SWITCH (FUSED 15 AMP.)
- THREE WAY SWITCH
- DISTRIBUTION PANEL (FUSE OR CIRCUIT BREAKER)

NOTES

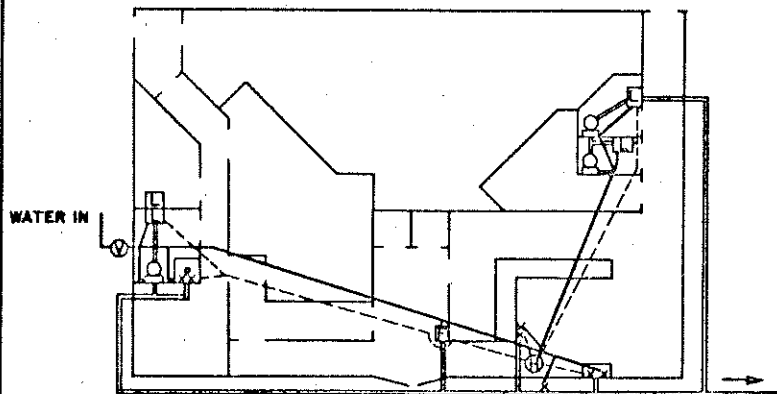
1. OUTSIDE FLOOD LIGHTS TO BE MOUNTED UNDER EAVES
2. FLUORESCENT LAMPS TO BE MOUNTED FLUSH WITH CEILING.
3. RECOMMEND 400 AMP. SERVICE, THE A.C. LOAD DEMAND 200 AMP.



AUDITORIUM ELECTRICAL LAYOUT



FIRST FLOOR ELECTRICAL LAYOUT



FIRST FLOOR WATER & SEWER LAYOUT

COOPERATIVE EXTENSION WORK IN AGRICULTURE AND HOME ECONOMICS		
AND UNITED STATES DEPARTMENT OF AGRICULTURE COOPERATING		
LIVESTOCK MARKET		
W. VA.	'71	6129
		SHEET 8 OF 8