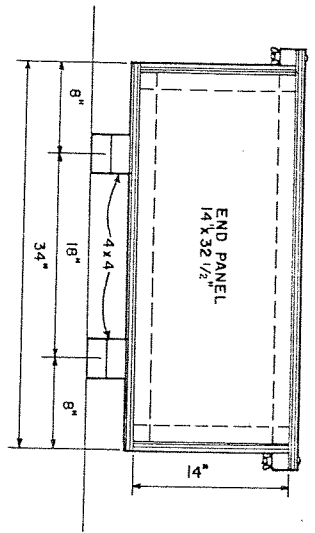
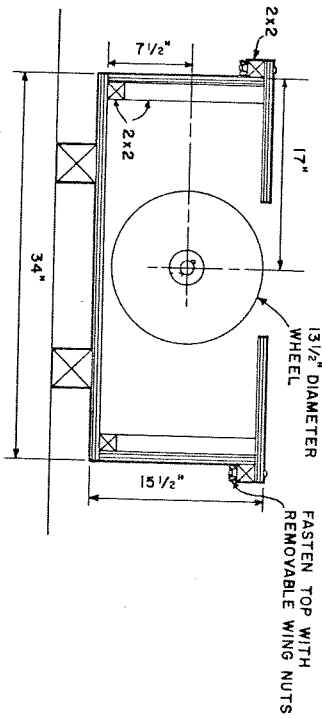


NOTE: ENDS, SIDES, TOP AND BOTTOM - 3/4" EXTERIOR DFPA PLYWOOD



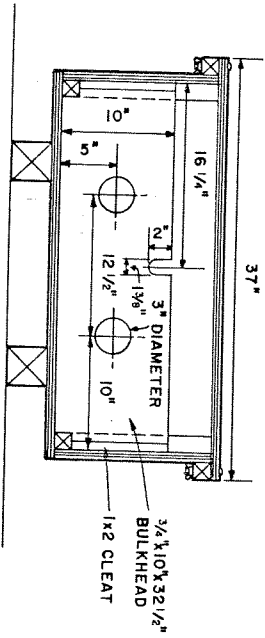
END VIEW

SCALE: 0 1 FT.



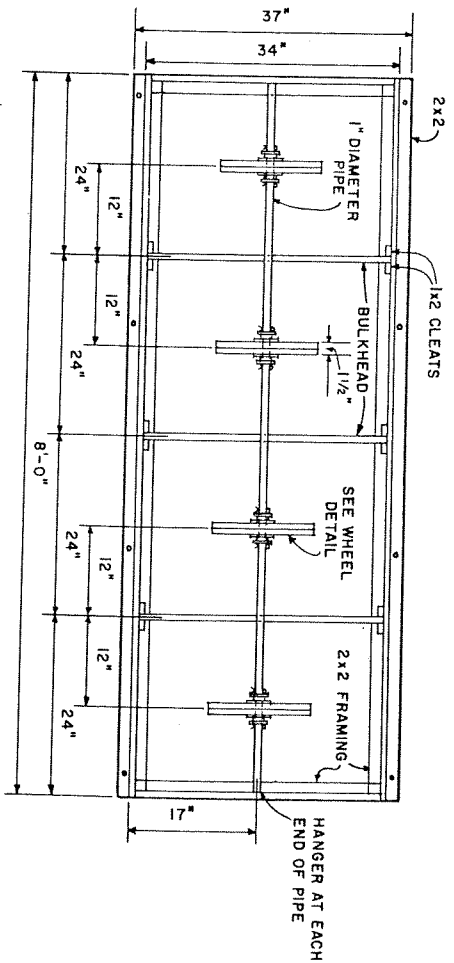
SECTION AT WHEEL

SCALE: 0 1 FT.



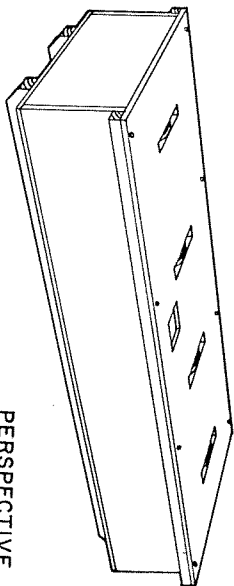
SECTION AT BULKHEAD

SCALE: 0 1 FT.



PLAN VIEW WITH TOP REMOVED

SCALE: 0 1 FT.



PERSPECTIVE

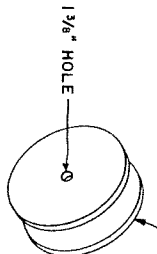
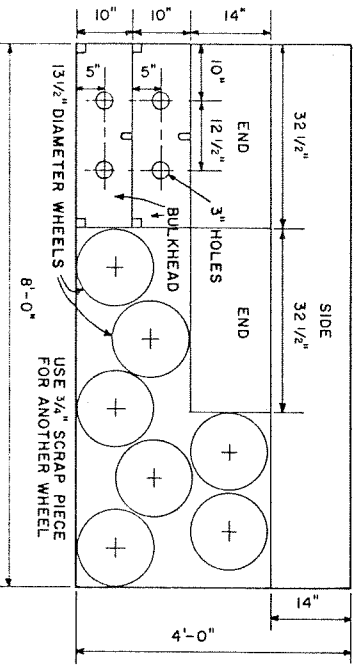
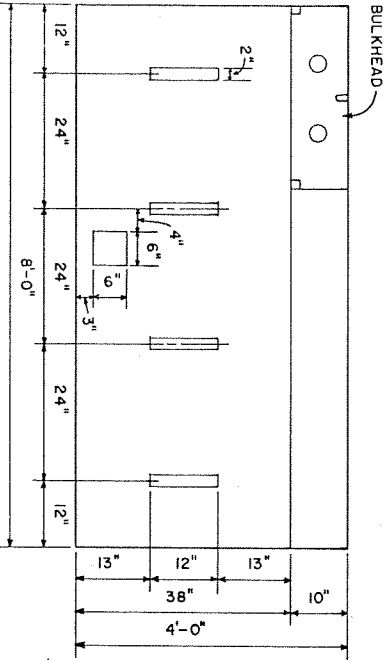
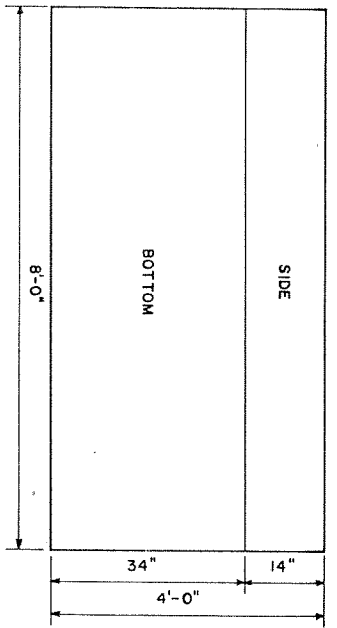
THE PLYWOOD USE RECOMMENDATIONS CONTAINED IN THIS PUBLICATION ARE BASED UPON THE ASSOCIATION'S CONTINUING PROGRAM OF LABORATORY TESTING, PRODUCT RESEARCH AND COMPREHENSIVE FIELD EXPERIENCE. BEST PERFORMANCE DEPENDS UPON THE USE OF QUALITY PLYWOOD, IDENTIFIED BY AMERICAN PLYWOOD ASSOCIATION GRADE - TRADEMARKS, PROPERLY APPLIED IN ACCORDANCE WITH THESE RECOMMENDATIONS.

This design is based on the use of American Plywood Association Grade-Trademarked plywood. Structural deficiencies may result with the substitution of materials. Because erection of the structure cannot be supervised no liability can be assumed by the designer or of a Meridian Plywood Association. Mention or variant use does not constitute a guarantee of the product by the U.S. Department of Agriculture or an endorsement by the Department over other products not mentioned.

COOPERATIVE EXTENSION WORK IN AGRICULTURE AND HOME ECONOMICS			
DEPARTMENT OF AGRICULTURAL ENGINEERING			
UNIVERSITY OF MARYLAND			
UNITED STATES DEPARTMENT OF AGRICULTURE COOPERATING			
CATTLE FEEDER			
LIQUID SUPPLEMENT			
A.P.A.	'71	6124	SHEET 1 OF 2

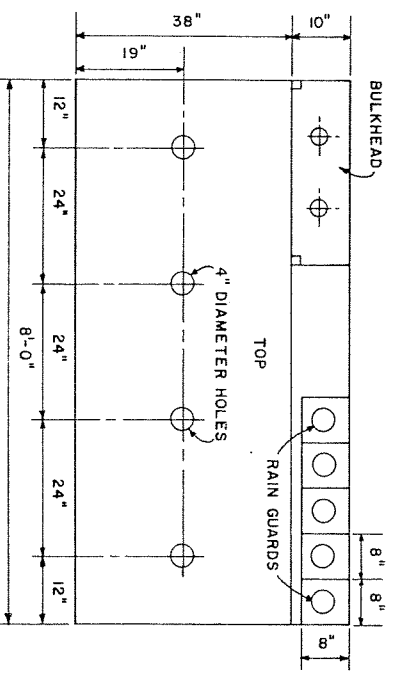
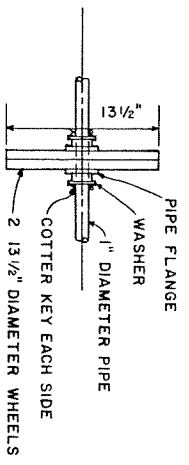
MATERIALS LIST

LUMBER	ITEM & USE	PIECES	SIZE	LENGTH	FBM
SKIDS-PRESERVATIVE TREATED FRAMING	2	4x4	8'-0"	21 1/3	
	4	2x2	1'-0 1/2"	1 1/3	
	4	2x2	2'-5 1/2"	3 2/3	
	2	2x2	7'-10 1/2"	10 2/3	
CLEATS	12	2x2	8'-0"	2	
PLYWOOD					
ALL EXTERIOR - TYPE (EXTERIOR-DFPA)	3 PIECES	3/4"	4x8'	96 SQ. FT.	
HARDWARE AND MISCELLANEOUS	ITEM & USE	PIECES	DESCRIPTION		
PIPE BOLTS	1	1"	DIAMETER x 7'-10 3/8"		
NAILS	8		3/8 x 3" CARRIAGE		
GLUE	1 PINT		8 4 COMMON, GALVANIZED		
HANGERS	2		RECORDSINOL RESIN		
WASHERS & COTTER KEYS	8		1"		
PIPE FLANGES	8				



NAIL AND GLUE 2 PIECES TOGETHER TO MAKE 1 WHEEL 1 1/2" WIDE. CUT HOLE IN CENTER SO 1" PIPE WILL SLIDE THRU EASILY.

WHEEL DETAILS



CUTTING DIAGRAMS

SCALE: 0 2 FT.
3/4" EXTERIOR AC OR BC DFPA PLYWOOD

ALTERNATE TOP

COOPERATIVE EXTENSION WORK IN AGRICULTURE AND HOME ECONOMICS DEPARTMENT OF AGRICULTURAL ENGINEERING UNIVERSITY OF MARYLAND AND THE SYSTEM OF AGRICULTURE COOPERATING

CATTLE FEEDER LIQUID SUPPLEMENT

A.P.A. '71 6124 SHEET 2 OF 2