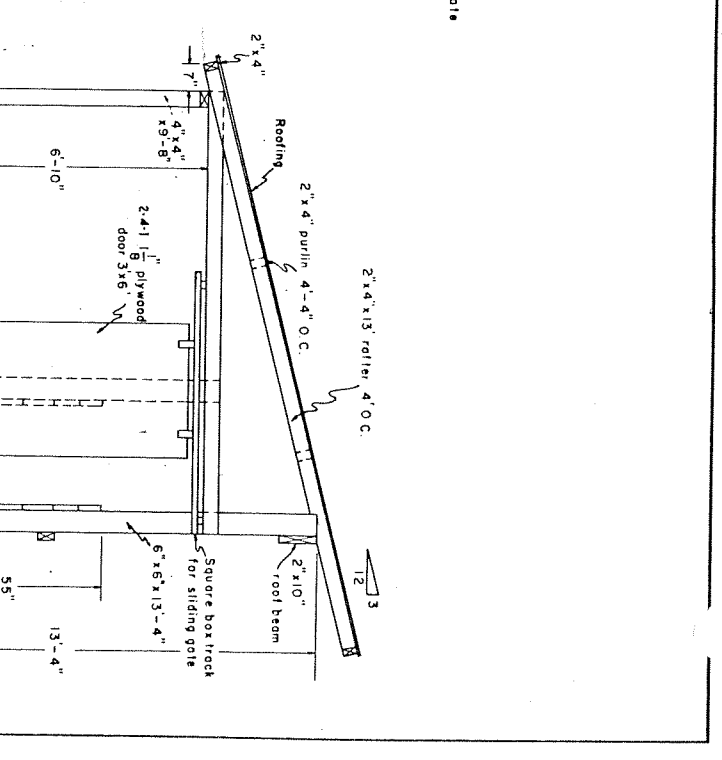
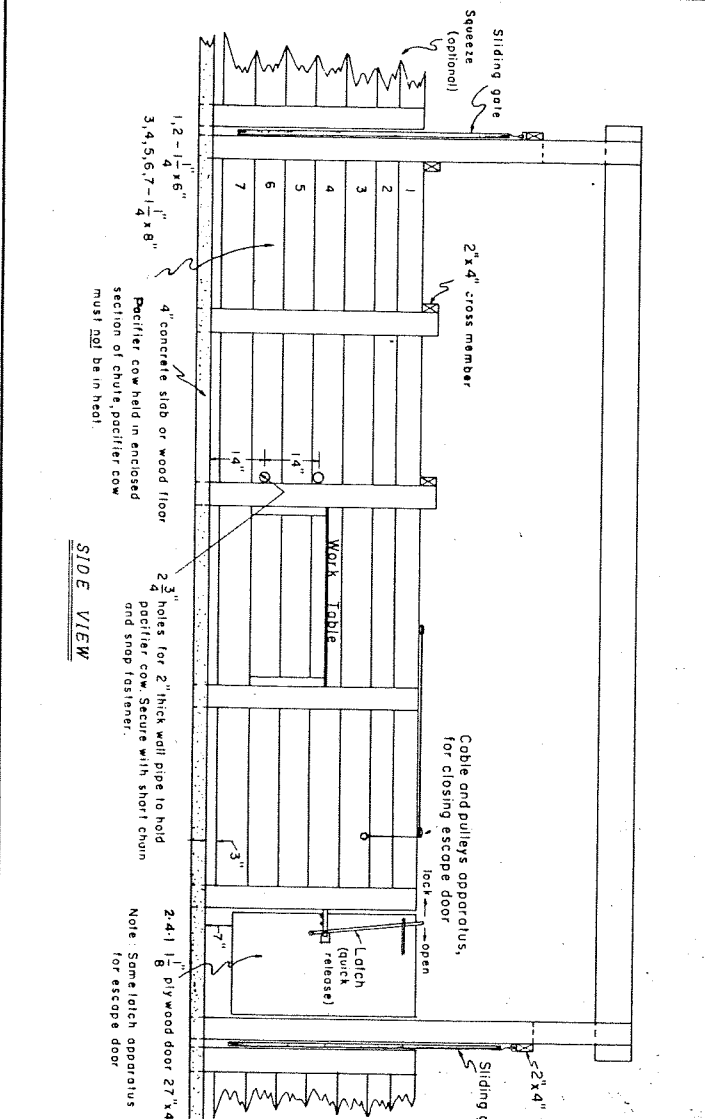
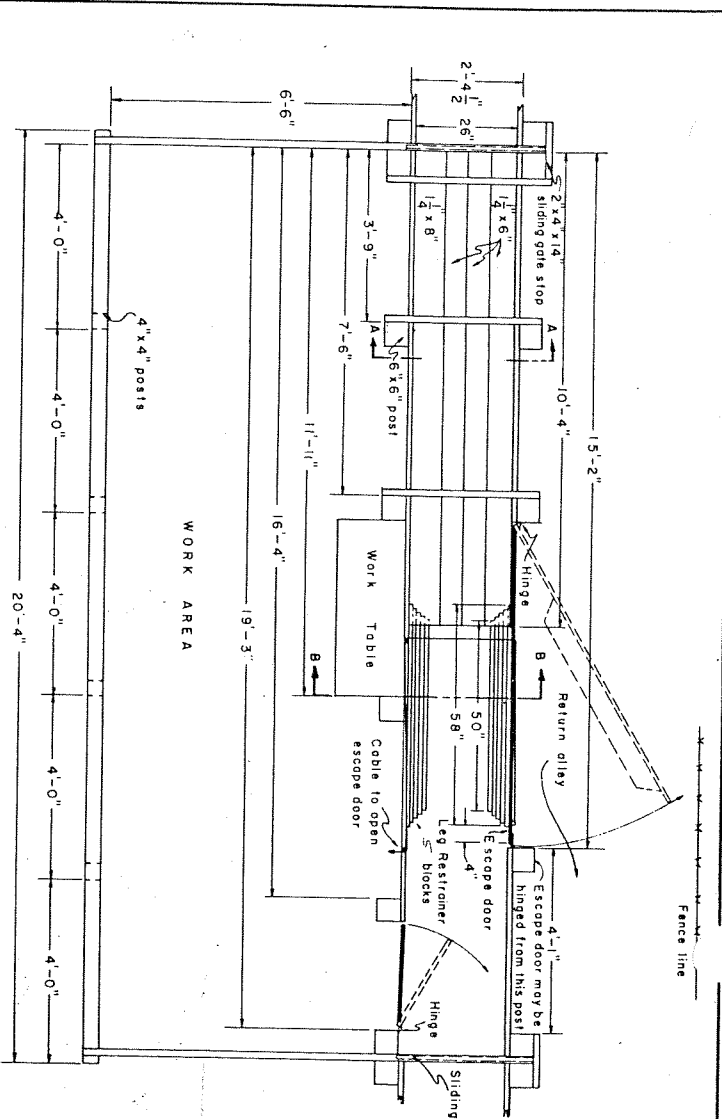


SCALE: 0 = 1' EXCEPT AS NOTED

ISOMETRIC

Designed by: Gene Rembo
University of Calif. Plan C
Davis, Calif.

COOPERATIVE EXTENSION WORK IN AGRICULTURE AND HOME ECONOMICS			
DEPARTMENT OF AGRICULTURAL ENGINEERING			
UNIVERSITY OF MARYLAND			
UNITED STATES DEPARTMENT OF AGRICULTURE COOPERATING			
BREEDING CHUTE			
FOR BEEF CATTLE			
CALIF.	70	6103	SHEET 1 OF 2



4" concrete slab or wood floor
 Pacifier cow held in enclosed section of chute, pacifier cow must not be in heat.

2 3/4" holes for 2" thick wall pipe to hold pacifier cow. Secure with short chain and snap fasteners.

2x4 1/8 plywood door 27" x 48"
 Note: Same latch apparatus for escape door.

Note:
 Corrugated translucent plastic panel roofing installed in accordance with manufacturer's directions.
 All poles and wood in contact with the ground to be pressure treated with a preservative.

SCALE: 0' = 1" EXCEPT AS NOTED

COOPERATIVE EXTENSION WORK IN AGRICULTURE AND HOME ECONOMICS			
DEPARTMENT OF AGRICULTURAL ENGINEERING			
UNIVERSITY OF MARYLAND			
UNITED STATES DEPARTMENT OF AGRICULTURE COOPERATING			
BREEDING CHUTE FOR BEEF CATTLE			
CALIF.	70	6103	SHEET 2 OF 2