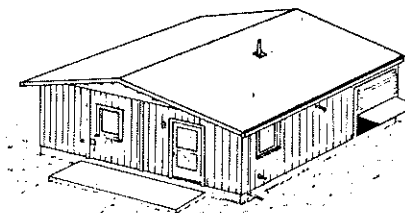


- SYMBOL KEY**
- CU CONDENSING UNIT
 - EF EXHAUST FAN (2,000 C.F.M.) WITH DUCT TO OUTSIDE
 - EL ELEC. SERVICE ENTRANCE
 - FD FLOOR DRAIN
 - MP MILK PUMP & RECEIVER
 - S STORAGE CABINET
 - SG STANDBY GENERATOR WITH PTO SHAFT THROUGH WALL
 - UR UTENSIL RACK
 - VP VACUUM PUMP & TANK
 - WB WATER BOILER, OPTIONAL
 - WH WATER HEATER
 - WP WATER PUMP & TANK
 - WV WASH VATS

- DOOR SCHEDULE**
- (A) 3'-0" x 6'-8" DOUBLE ACTING SELF-CLOSING & FLYTIGHT
 - (B) 3'-0" x 6'-8" (3 REQ'D)
 - (C) 3'-0" x 6'-8" COMBINATION STORM-SCREEN DOOR
 - (D) 2'-0" x 6'-8"



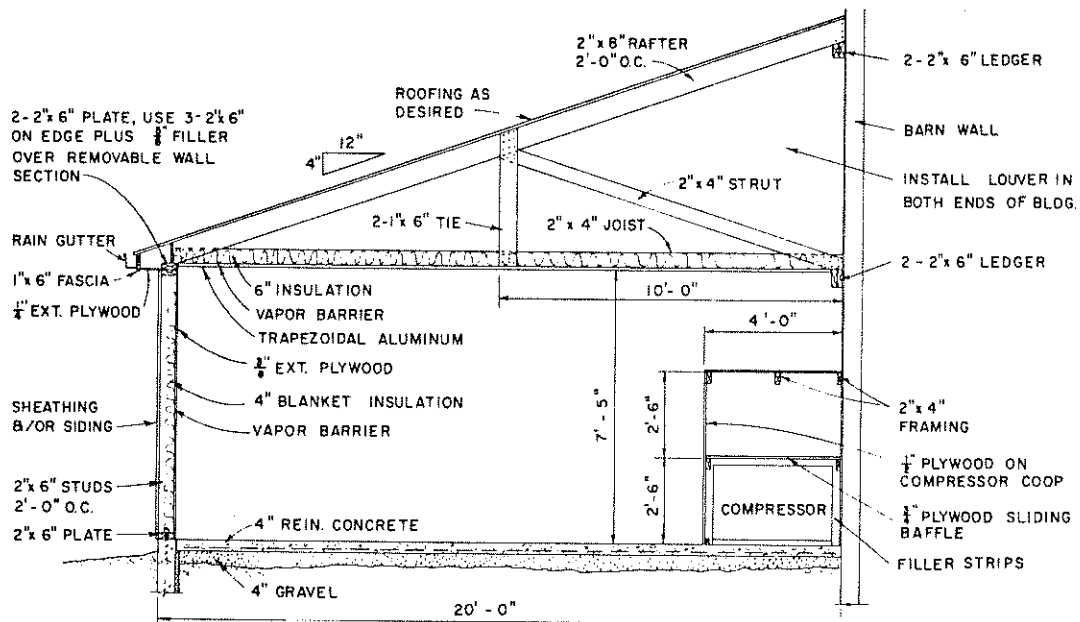
PERSPECTIVE

DESIGNED BY:
W. W. IRISH
CORNELL UNIV.
PLAN NO. 836

COOPERATIVE EXTENSION WORK IN
AGRICULTURE AND HOME ECONOMICS
DEPARTMENT OF AGRICULTURAL ENGINEERING
UNIVERSITY OF MARYLAND
AND
UNITED STATES DEPARTMENT OF AGRICULTURE COOPERATING

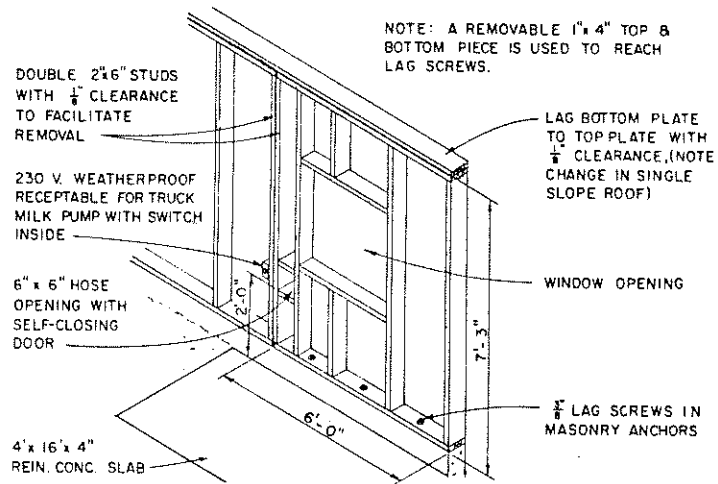
MILKHOUSE

N.Y.	'69	6078	SHEET 1 OF 2
------	-----	------	--------------

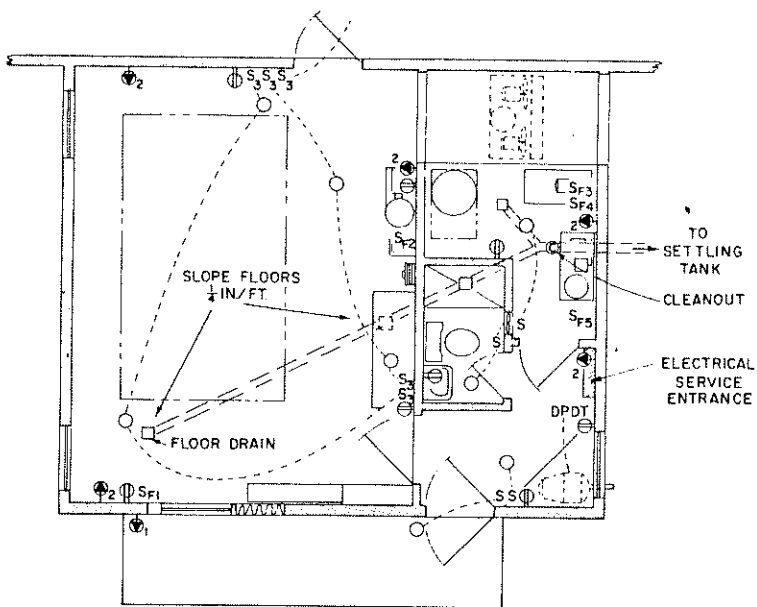


SECTION THROUGH UTILITY ROOM WITH ALTERNATE SINGLE SLOPE ROOF

0 1 2 3 4 FT.



FRAMING DETAIL OF REMOVABLE WALL SECTION



WIRING & DRAINAGE LAYOUT

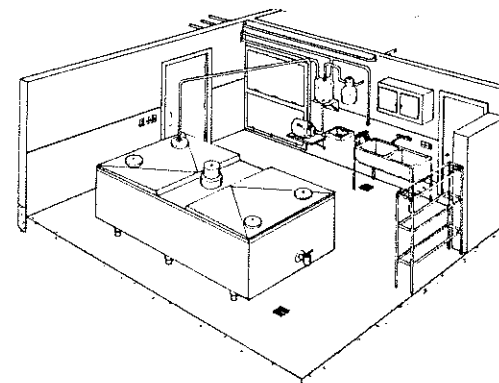
0 2 4 6 FT.

ELECTRICAL SYMBOLS

- LIGHT OUTLET
- ⊕ DUPLX CONVENIENCE OUTLET
- ⚡ 230 VOLT WEATHERPROOF OUTLET:
 1. MILK PUMP ON TRUCK
 2. SPACE HEATER (5 REQ'D)
- S_F 230 V. FUSED SWITCH FOR MOTOR PROTECTION:
 1. MILK PUMP ON TANK TRUCK
 2. MILK TRANSFER PUMP
 3. REFRIGERATION COMPRESSOR
 4. WATER PUMP
 5. VACUUM PUMP
- S SINGLE POLE SWITCH
- S₃ 3 WAY SWITCH
- DPDT DOUBLE - POLE, DOUBLE-THROW SWITCH FOR STAND-BY GENERATOR

NOTES:

1. THIS PLAN IS DESIGNED TO ACCOMMODATE THE LONGEST & WIDEST 1200 GALLON COMMERCIAL BULK MILK TANK.
2. SLOPE ALL FLOORS TO DRAINS 1/4" PER FOOT.
3. COMPLY WITH ALL LOCAL BUILDING, ELECTRICAL & SANITARY CODES.
4. CIRCUITS SERVICING MOTORS MUST HAVE OVERLOAD PROTECTION.
5. WATER HEATER OR WATER BOILER MUST BE WIRED THROUGH CIRCUIT BREAKER AT SERVICE ENTRANCE.
6. CHECK GRADE STAMPS FOR EXTERIOR PLYWOOD AND USE EXTERIOR GRADE OR MEDIUM DENSITY OVERLAY.
7. REMOVABLE WALL SECTION PROVIDES LARGE OPENING TO MOVE BULK TANK THROUGH.
8. PRE-FABRICATE ROOF FRAMING ON GROUND LEVEL.
9. OBTAIN APPROVAL OF YOUR LOCAL MILK MARKETING REPRESENTATIVE PRIOR TO USING THIS PLAN



INTERIOR PERSPECTIVE

COOPERATIVE EXTENSION WORK IN
 AGRICULTURE AND HOME ECONOMICS
 DEPARTMENT OF AGRICULTURAL ENGINEERING
 UNIVERSITY OF MARYLAND
 AND
 UNITED STATES DEPARTMENT OF AGRICULTURE COOPERATING

MILKHOUSE

N.Y. '69 6078 SHEET 2 OF 2