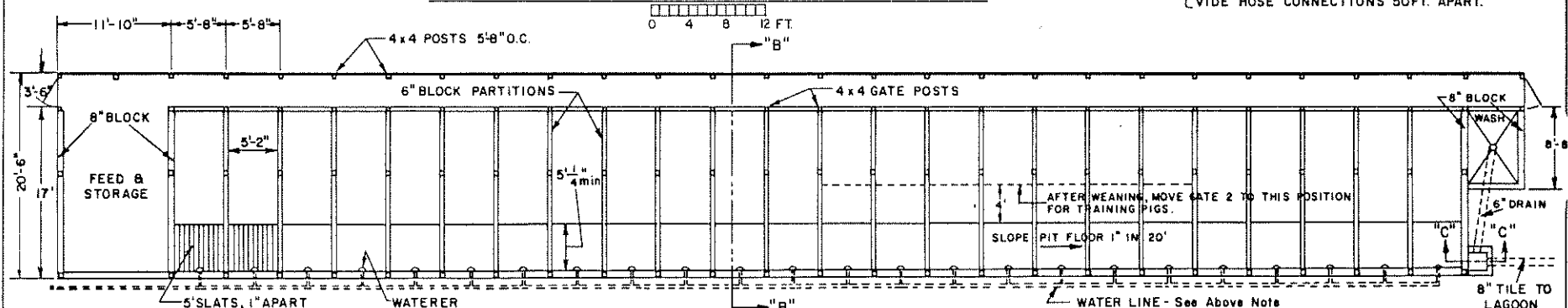
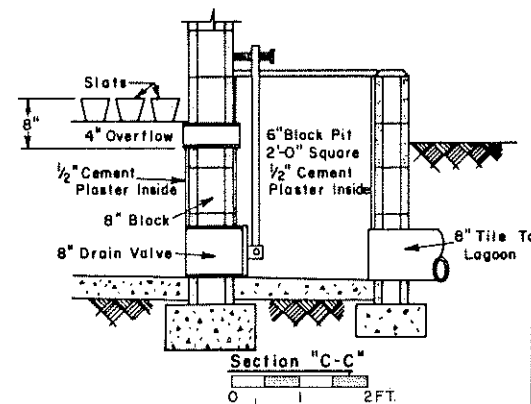
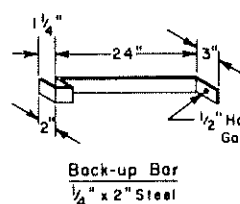
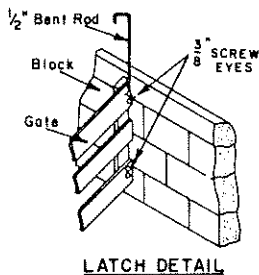
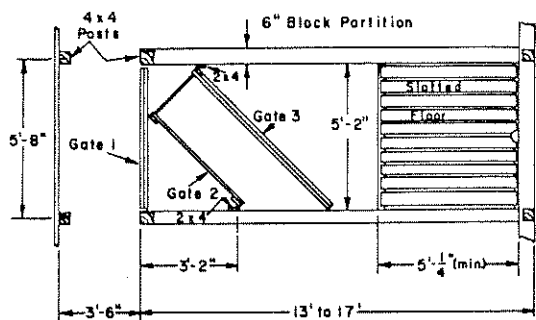


Floor Plan - FOR FARROWING OR FEEDER PIG PRODUCTION ONLY



Floor Plan - FOR FARROW TO FINISH

Floor Plan - TYPICAL PEN

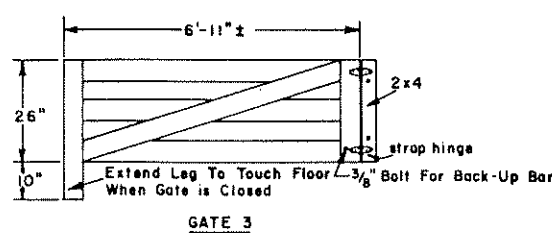
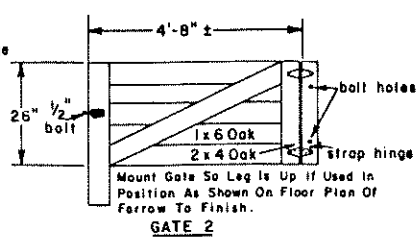
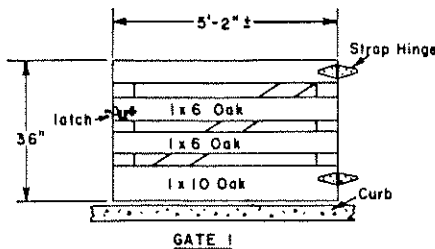


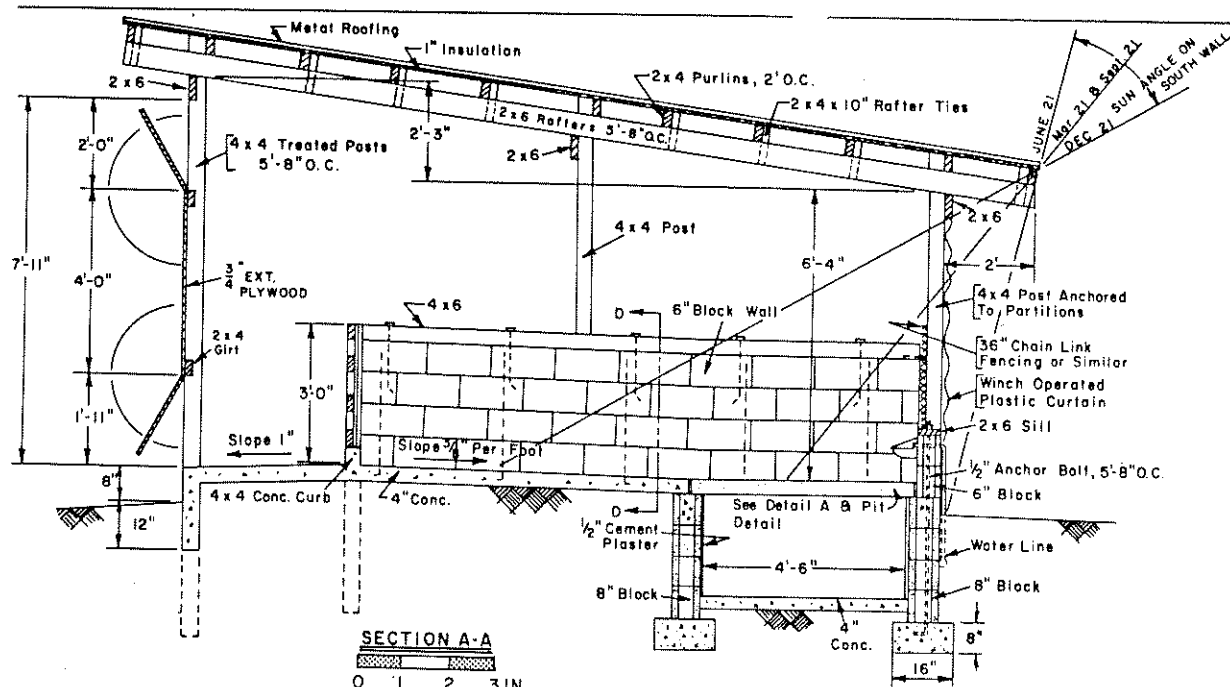
N.C. NO. 521

COOPERATIVE EXTENSION WORK IN
 AGRICULTURE AND HOME ECONOMICS
 DEPARTMENT OF AGRICULTURAL ENGINEERING
 UNIVERSITY OF MARYLAND
 AND
 UNITED STATES DEPARTMENT OF AGRICULTURE COOPERATING

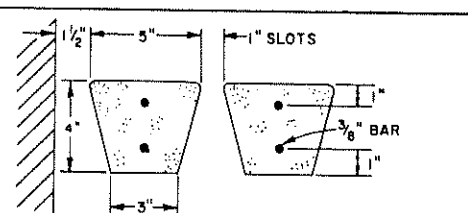
HOG HOUSES - FARROWING
 AND FARROW TO FINISH

N.C. '69 6073 SHEET 1 OF 2

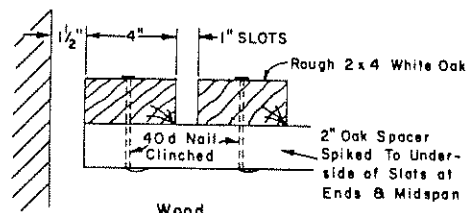




SECTION A-A
0 1 2 3 IN.

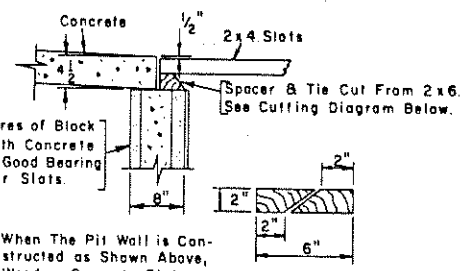


Concrete



Wood

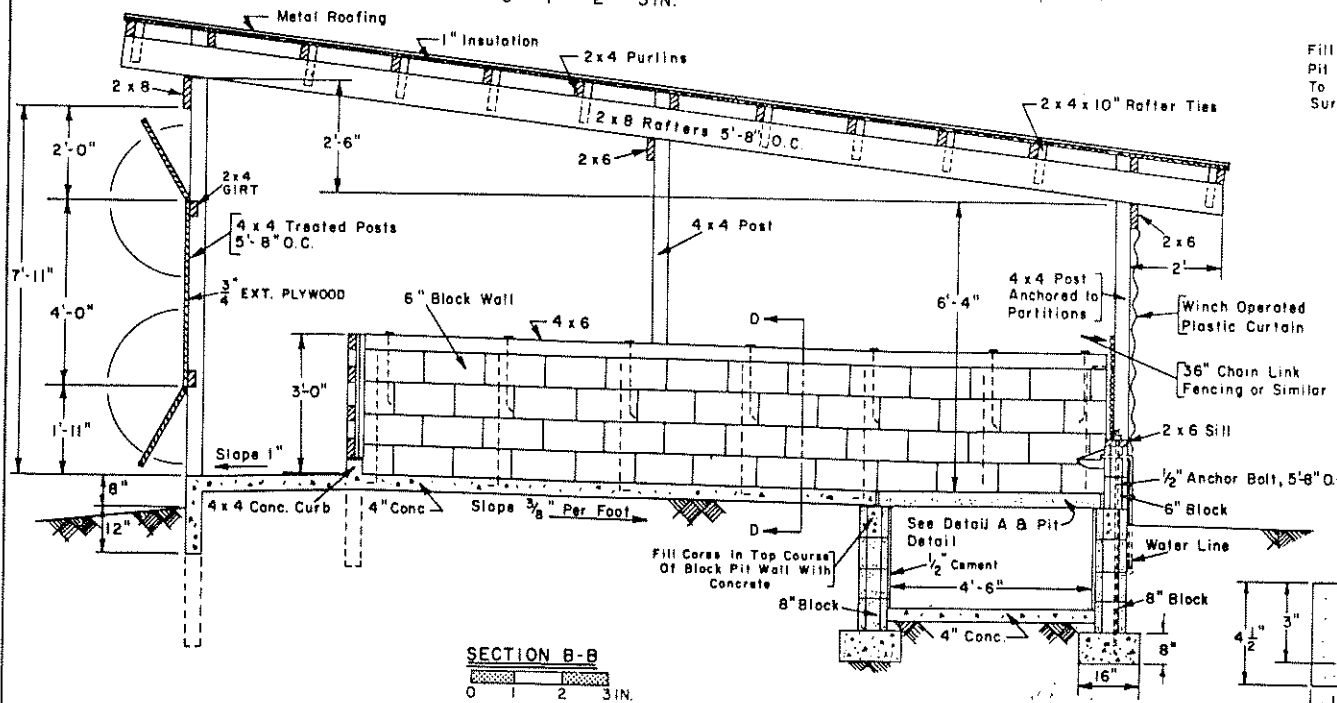
SLAT DETAIL



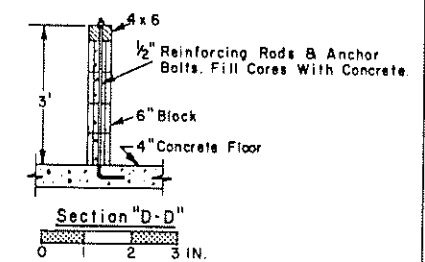
Fill Top Cores of Block Pit Wall With Concrete To Provide Good Bearing Surface For Slats.

When The Pit Wall is Constructed as Shown Above, Wood or Concrete Slats are Interchangeable.

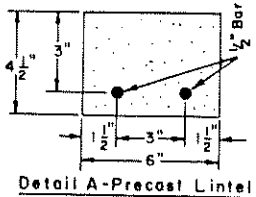
Pit Construction Detail - No Scale



SECTION B-B
0 1 2 3 IN.



Section "D-D"
0 2 3 IN.



Detail A - Precast Lintel