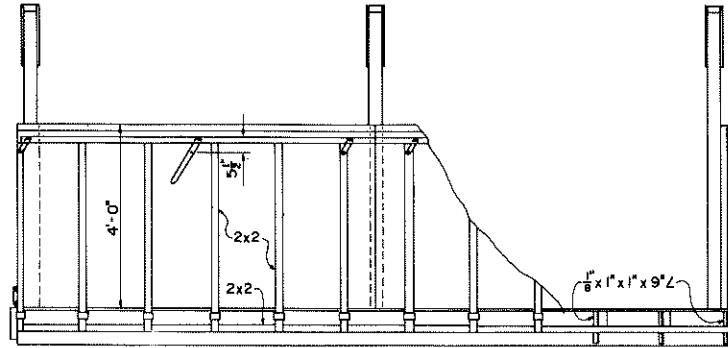
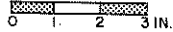
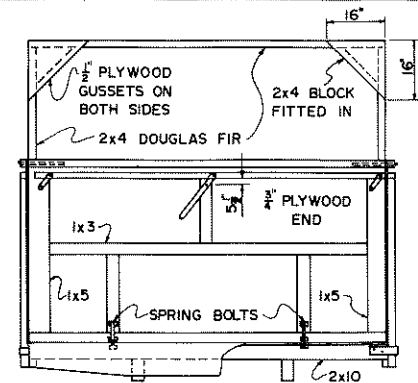


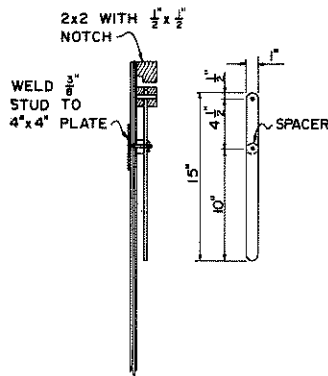
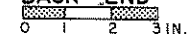
FRONT END



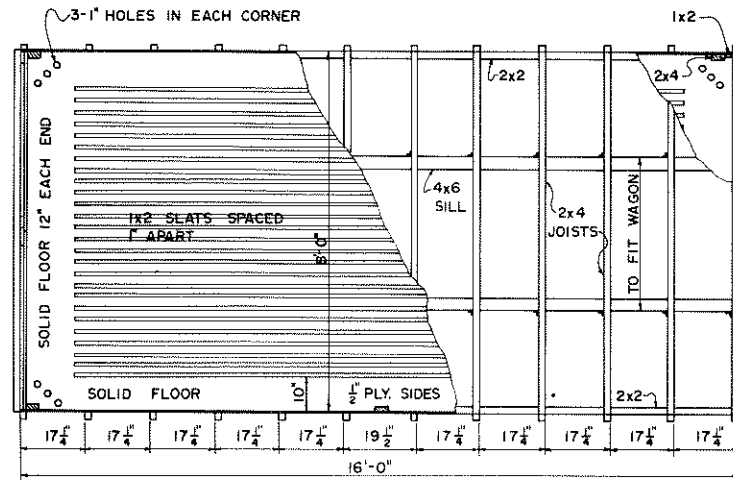
SIDE VIEW



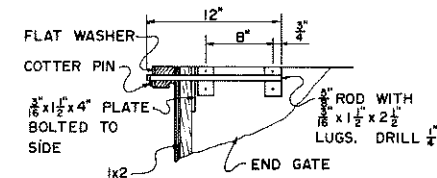
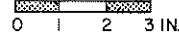
BACK END



CLAMP LEVER



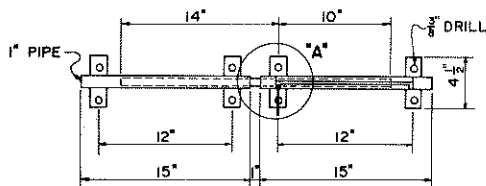
PLAN



TAIL GATE HINGE

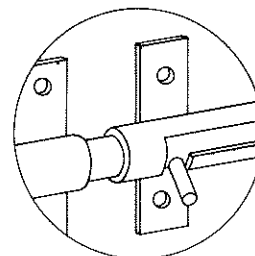
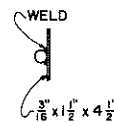


ALL PLYWOOD TO BE EXTERIOR TYPE

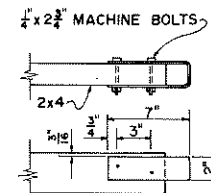


CONSTRUCT SLOTTED PART IN THREE SECTIONS. CUT SLOT IN 12 1/2" LENGTH. THEN WELD ON END SECTIONS AFTER BOLT IS INSERTED. BOLT IS 3/4" THICK-WALLED PIPE TURNED DOWN TO SLIDE INSIDE THE 1" PIPE.

FRONT GATE BOLT



DETAIL "A"



STAKE POCKET

FROM 3/8\"/>



UNIV. OF DELAWARE

COOPERATIVE EXTENSION WORK IN AGRICULTURE AND HOME ECONOMICS
DEPARTMENT OF AGRICULTURAL ENGINEERING
UNIVERSITY OF MARYLAND
AND
UNITED STATES DEPARTMENT OF AGRICULTURE COOPERATING

WAGON BOX FOR DRYING HAY

DEL. '69 6071 SHEET 1 OF 1