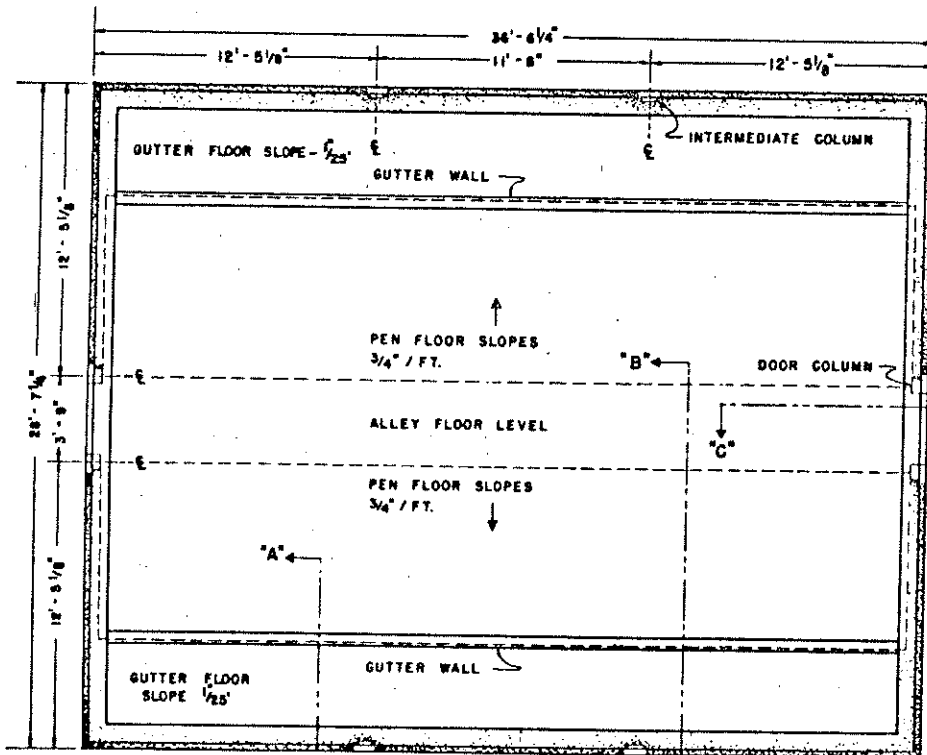
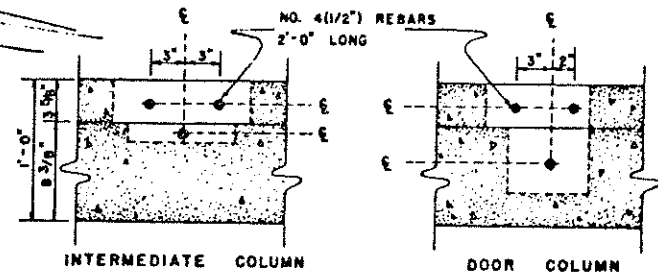


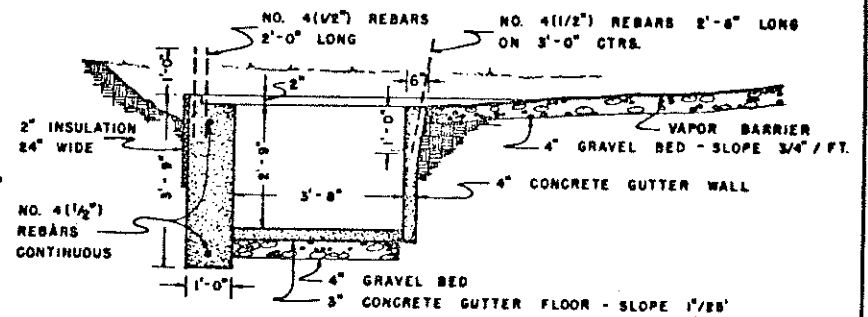
PERSPECTIVE



FOUNDATION PLAN



COLUMN REINFORCING



SECTION "A-A"

COOPERATIVE EXTENSION WORK IN
AGRICULTURE AND HOME ECONOMICS

AND
UNITED STATES DEPARTMENT OF AGRICULTURE COOPERATING

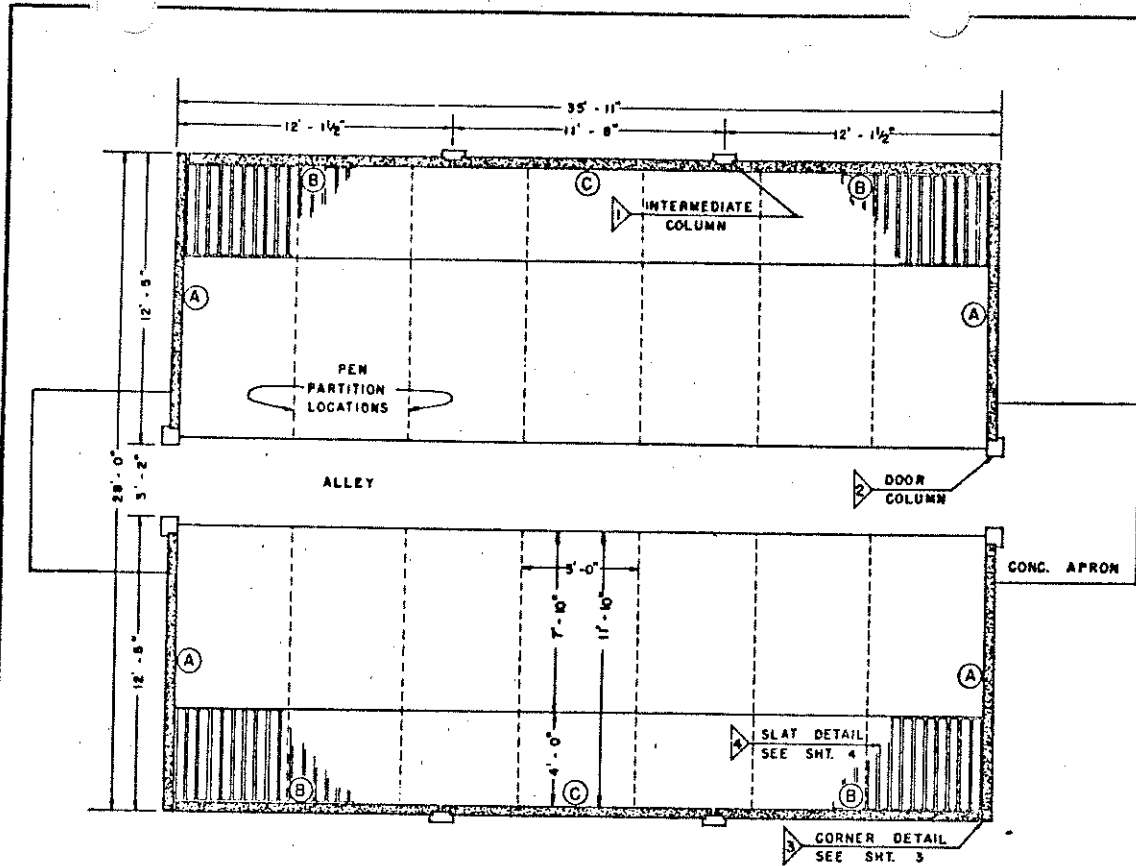
FARROWING HOUSE
TILT-UP CONCRETE CONSTRUCTION

NEBR. 68 EX. 6061 SHEET 1 OF 7

IN COOPERATION WITH
PORTLAND CEMENT ASSOCIATION

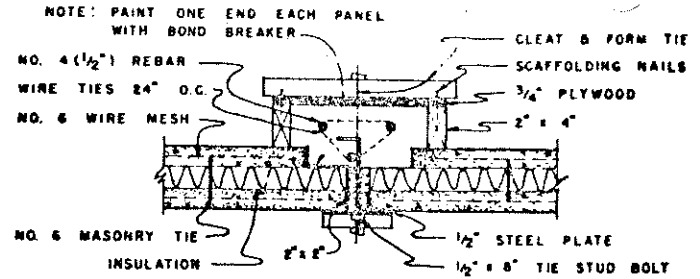
DESIGNED BY: E. A. OLSON
BAYLE H. LEWIS

NEBR. PLAN NO. 10.726-33

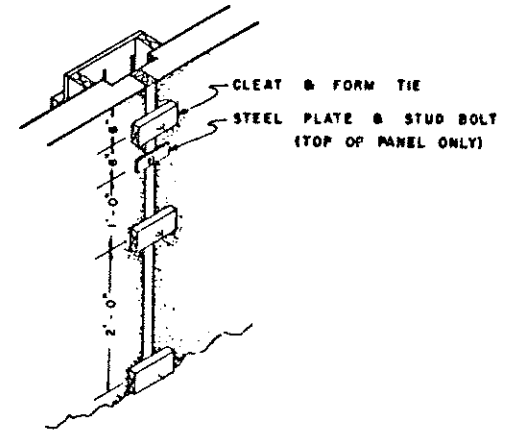


PLAN

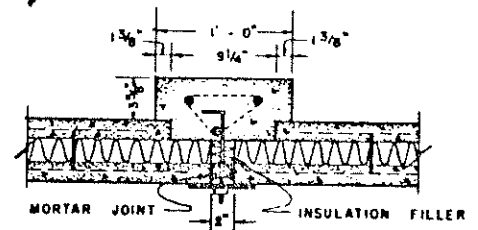
NOTE: SEE SHT. 6 FOR ALTERNATE CORNER DETAIL.



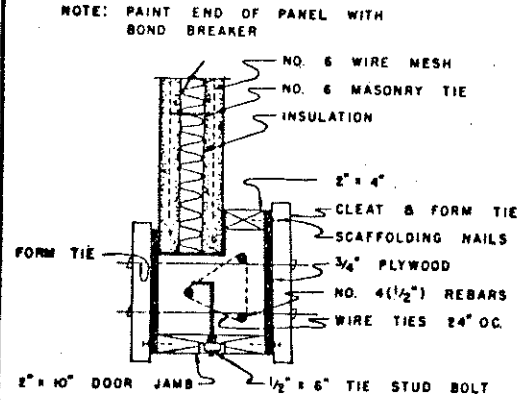
FORMING DETAIL



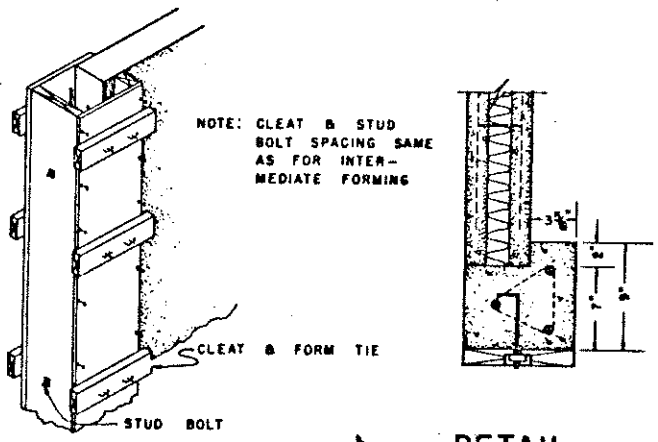
FORMING DETAIL



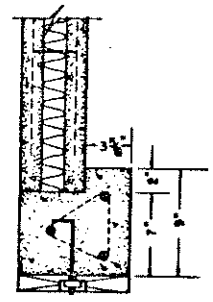
DETAIL



FORMING DETAIL



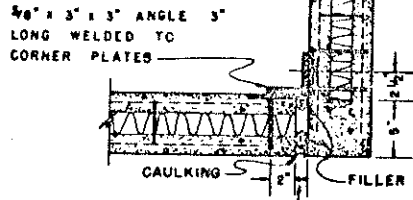
FORMING DETAIL



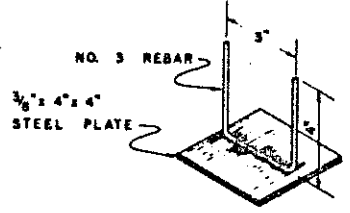
DETAIL

COOPERATIVE EXTENSION WORK IN
 AGRICULTURE AND HOME ECONOMICS
 AND
 UNITED STATES DEPARTMENT OF AGRICULTURE COOPERATING
FARROWING HOUSE
 TILT-UP CONCRETE CONSTRUCTION
 REBR. '68 EX. 6061 SHEET 2 OF 7

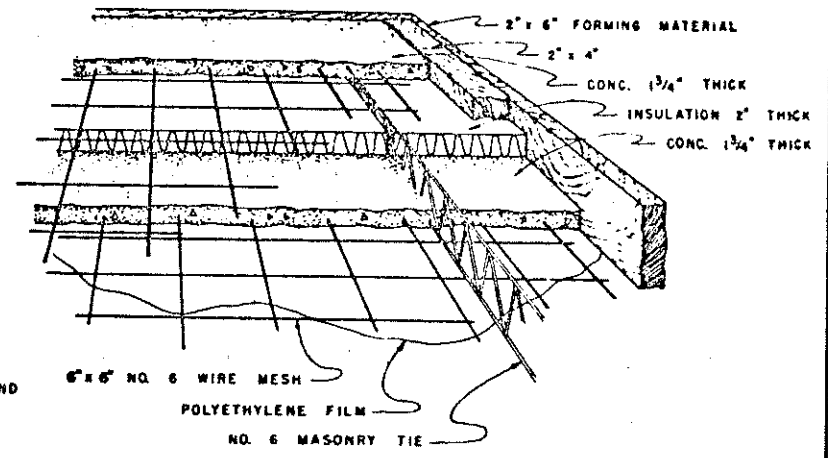
NOTE: OBSERVE ORIENTATION OF CORNER PLATE REBARS IN PANELS



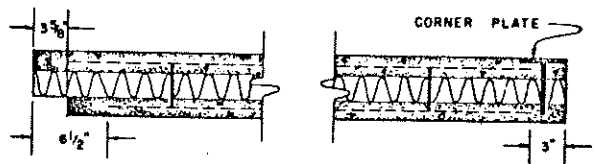
DETAIL



CORNER PLATE

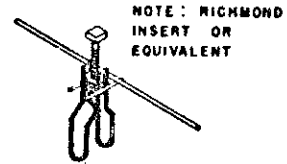


PANEL CONSTRUCTION DETAILS

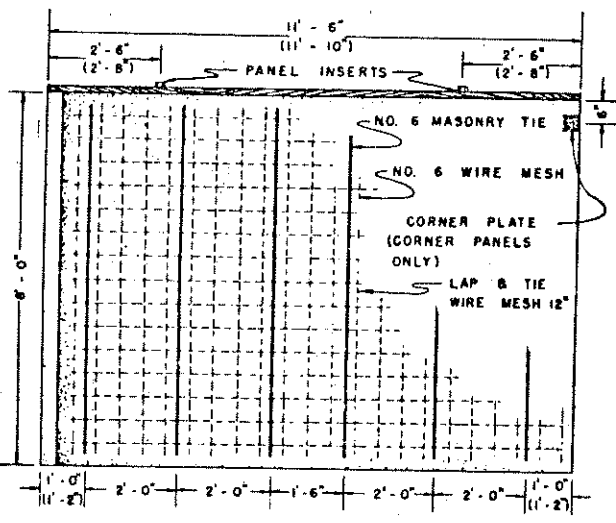


HORIZONTAL SECTION

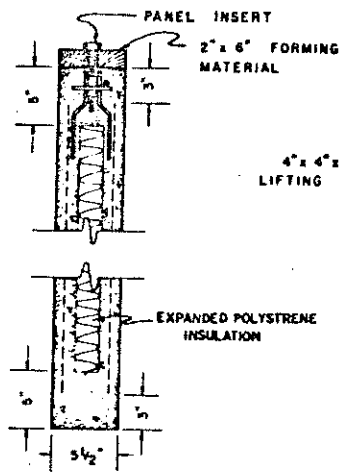
SCALE 1 1/2" = 1'-0"



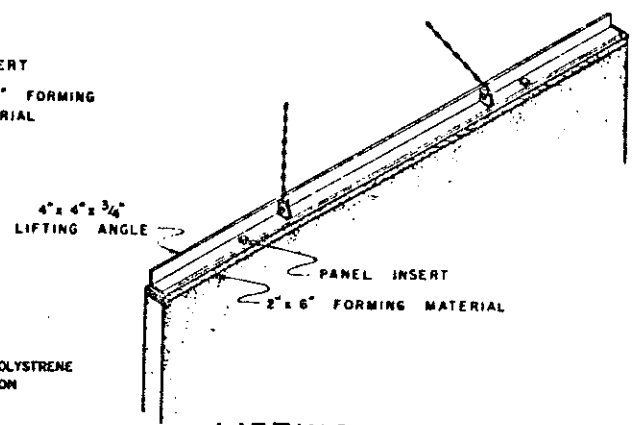
PANEL INSERT



PANEL REINFORCING



VERTICAL SECTION



LIFTING DETAIL

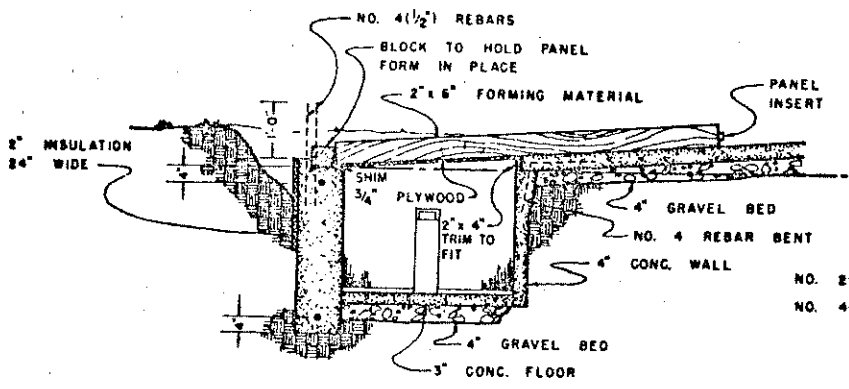
(NOTE CHANGES IN DIMENSIONS FOR "A" PANELS IN PARENTHESIS)
SEE SHT. 7 FOR LOCATION OF PLATES FOR PEN PARTITIONS

COOPERATIVE EXTENSION WORK IN AGRICULTURE AND HOME ECONOMICS

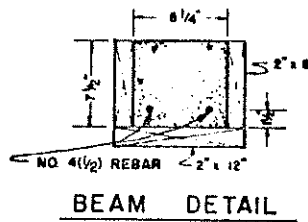
AND UNITED STATES DEPARTMENT OF AGRICULTURE COOPERATING

FARROWING HOUSE
TILT-UP CONCRETE CONSTRUCTION

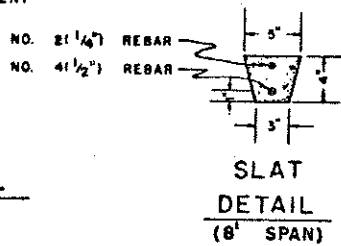
NEBR. '68 EX. 6061 SHEET 3 OF 7



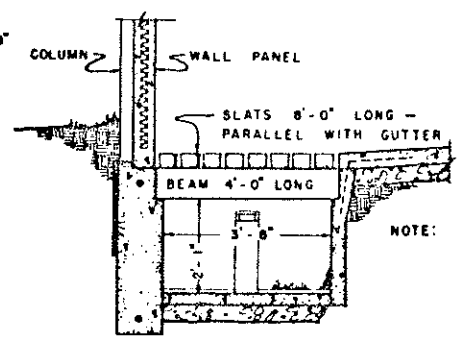
CASTING OVER GUTTER - DETAIL



BEAM DETAIL

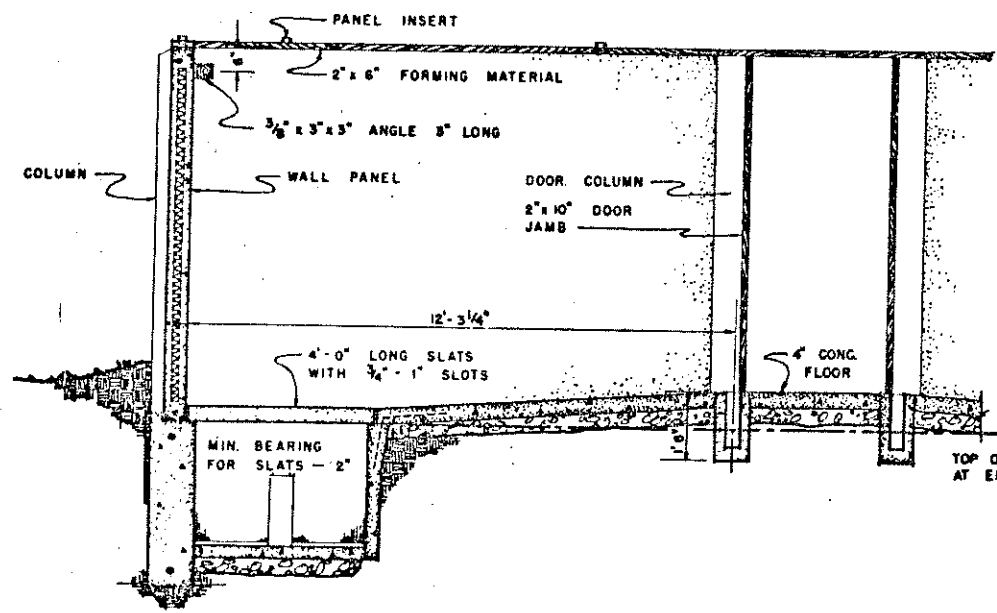


**SLAT DETAIL
(8' SPAN)**

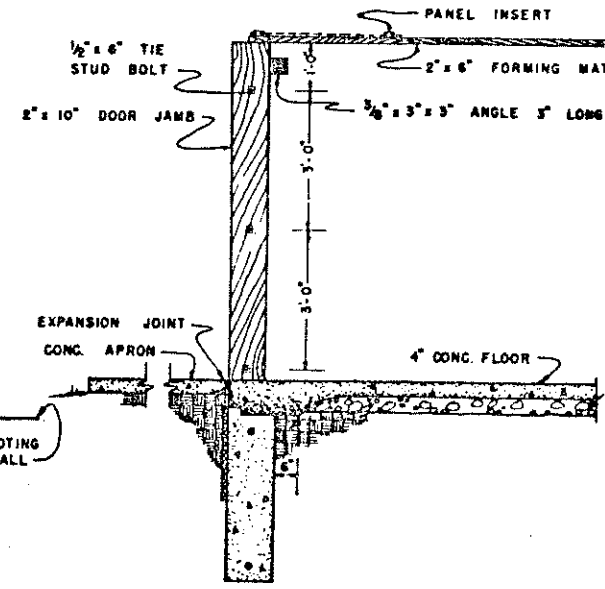


ALTERNATE (PARALLEL SLATS)

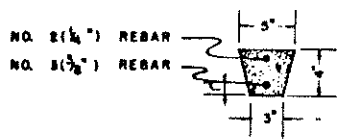
NOTE: SLATS WITH
3/4 - 1"
MIN BEARING FOR
BEAM - 2" - SPACING 8' oc.
MIN BEARING FOR
SLATS 4"



SECTION "B-B"

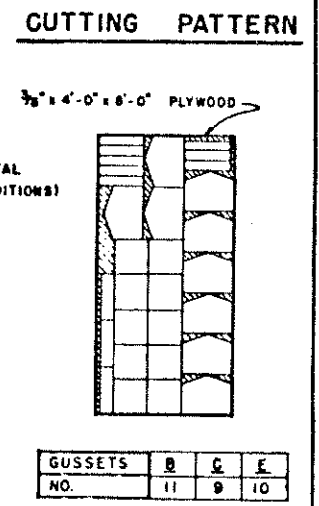
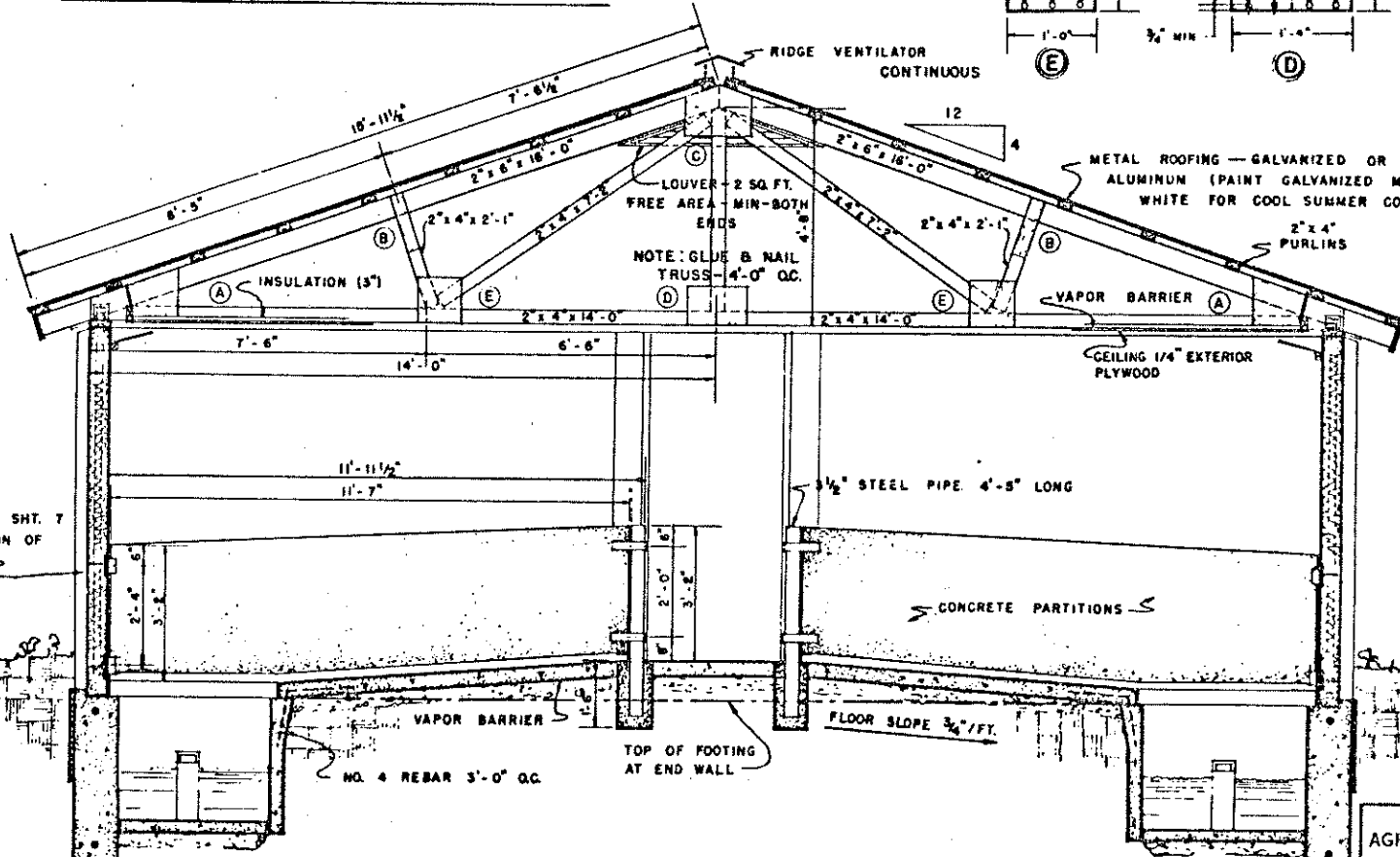
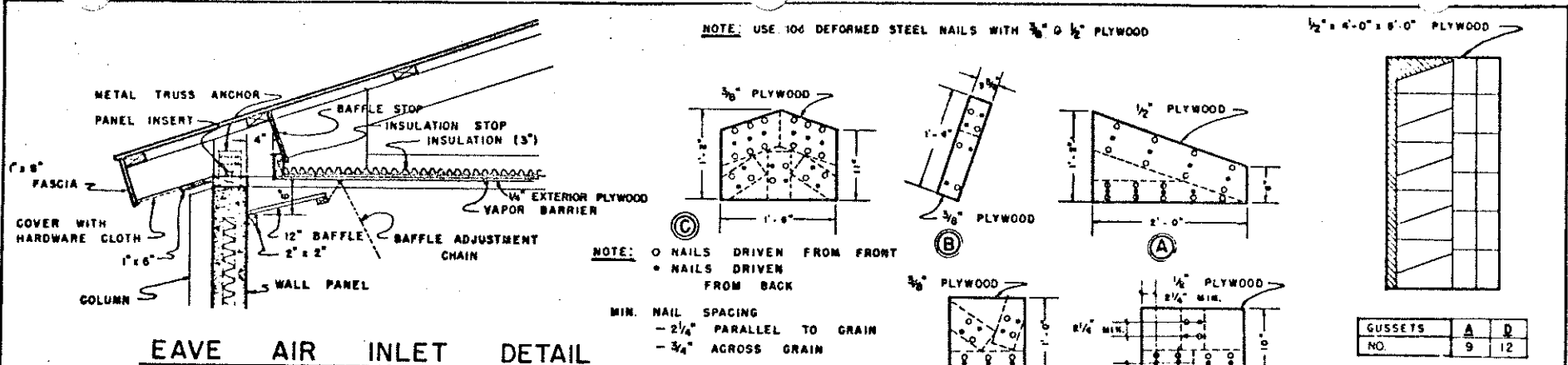


SECTION "C-C"



**SLAT DETAIL
(4' SPAN)**

COOPERATIVE EXTENSION WORK IN AGRICULTURE AND HOME ECONOMICS		
AND UNITED STATES DEPARTMENT OF AGRICULTURE COOPERATING		
FARROWING HOUSE TILT-UP CONCRETE CONSTRUCTION		
NEBR. '68	EX 6061	SHEET 4 OF 7



CROSS SECTION

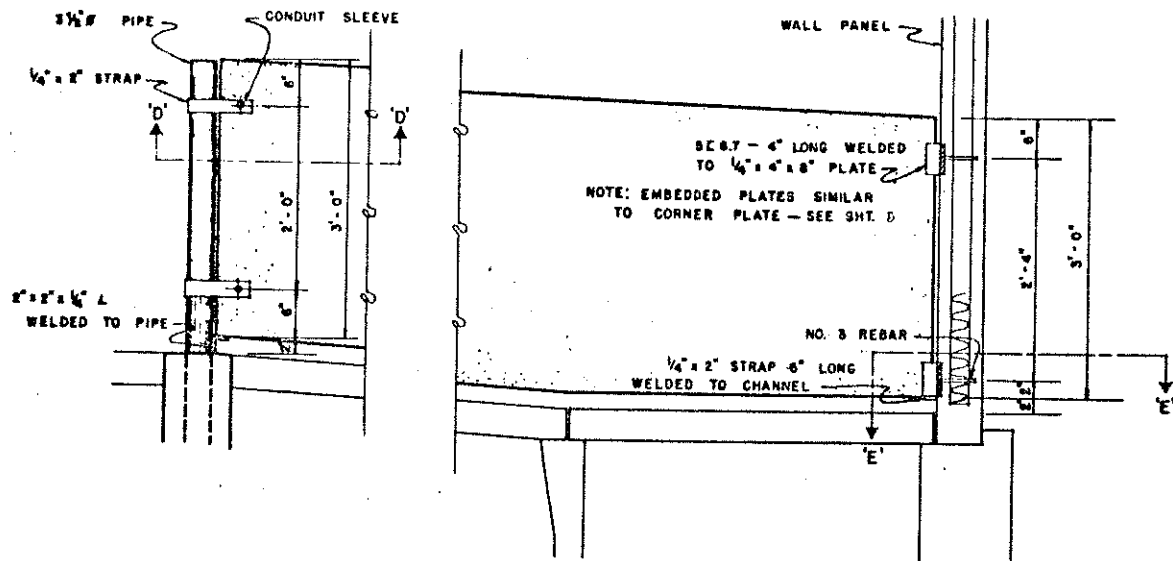
COOPERATIVE EXTENSION WORK IN AGRICULTURE AND HOME ECONOMICS

AND UNITED STATES DEPARTMENT OF AGRICULTURE COOPERATING

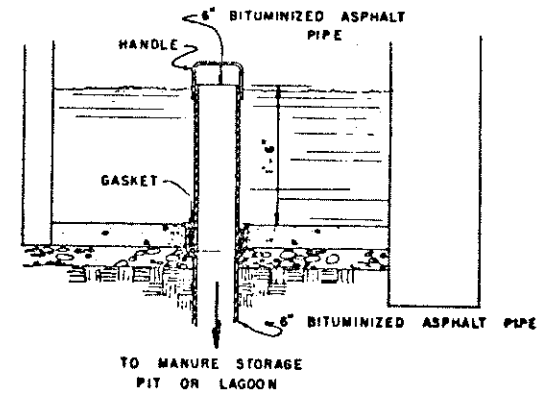
**FARROWING HOUSE
TILT-UP CONCRETE CONSTRUCTION**

NEBR. '68	EX. 6061	SHEET 5 OF 7
-----------	----------	--------------

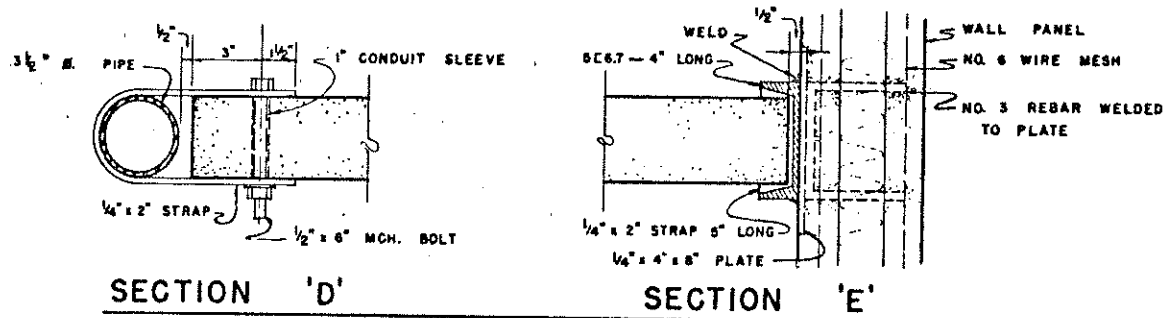
NOTE: FOR TRUSS GUSSETS USE RESORCINOL RESIN GLUE.



PARTITION DETAILS

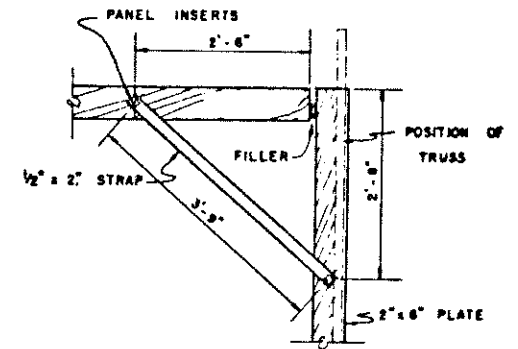


GUTTER DETAIL

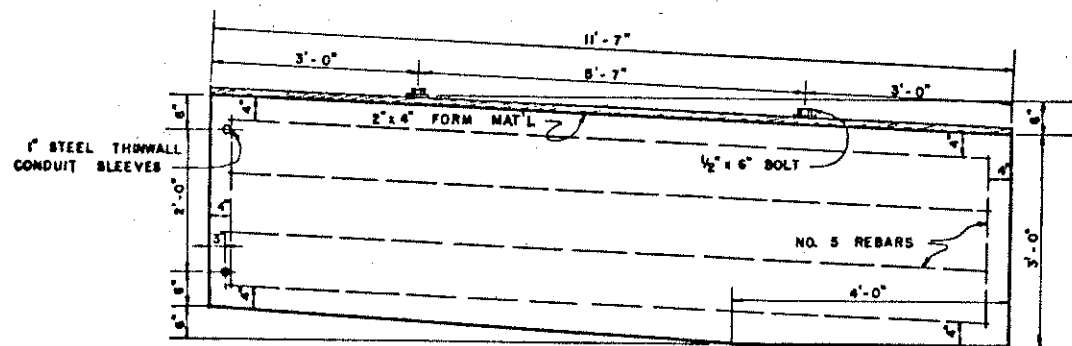


SECTION 'D'

SECTION 'E'

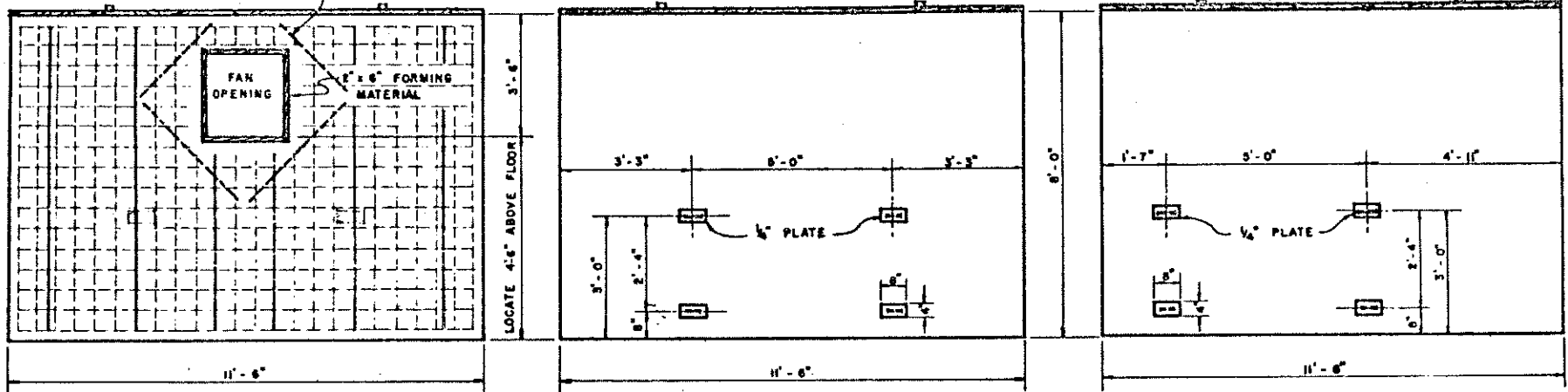


ALTERNATE CORNER TIE (TOP VIEW)



PARTITION REINFORCING

NO. 3 REBARS IN EACH FACE OF
PANEL - LENGTH SET BY OPENING SIZE



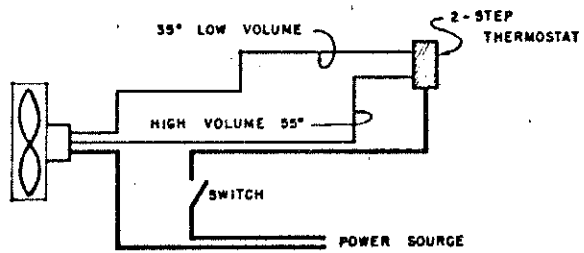
FAN OPENING DETAIL
PANEL "B" & "C"

PLATE LOCATIONS — PANEL "C"
(2 REQUIRED)

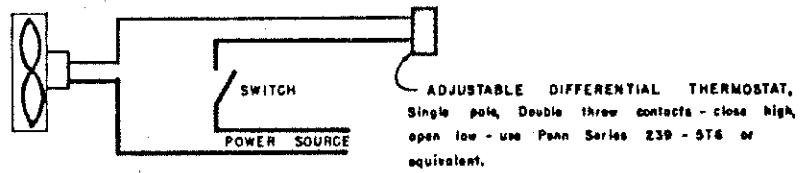
PLATE LOCATIONS — PANEL "B"
(2 AS SHOWN - 2 OPPOSITE)

WALL PANEL DETAILS

NOT TO SCALE



HIGH-LOW VOLUME FAN



HIGH VOLUME FAN

VENTILATION REQUIREMENTS: 2 exhaust fans
 1 High - Low volume fan for winter and mild weather
 CAPACITY - 500 CFM AT LOW VOLUME
 1,500 CFM AT HIGH VOLUME
 1 Fan, high volume for summer
 CAPACITY - 10,000 CFM
 ALL FAN RATINGS AT 1/8" STATIC PRESSURE
 NOTE: PROVIDE WEATHER PROOF HOOD FOR FAN.

VENTILATION MANAGEMENT:
COLD WEATHER - THE HIGH-LOW VOLUME FAN OPERATES CONTINUOUSLY AT LOW VOLUME UNLESS EXTREME WEATHER OR HEATER FAILURE REDUCES INSIDE TEMPERATURE BELOW 38° F.
MILD WEATHER - THE HIGH-LOW VOLUME FAN WILL OPERATE AT HIGH VOLUME WITH INCREASING TEMPERATURES.
HOT WEATHER - THE HIGH CAPACITY FAN CONTROLLED BY THE ADJUSTABLE DIFFERENTIAL THERMOSTAT WILL OPERATE CONTINUOUSLY WHEN THE TEMPERATURE IN THE BUILDING EXCEEDS 75°. BY ADJUSTING THE THERMOSTAT THE FAN WILL OPERATE UNTIL THE TEMPERATURE HAS DROPPED TO 70°. AT TEMPERATURES OVER 88° AN ADDITIONAL CIRCULATING FAN TO INCREASE AIR MOVEMENT INSIDE THE BUILDING WILL PROVIDE FOR GREATER ANIMAL COMFORT.