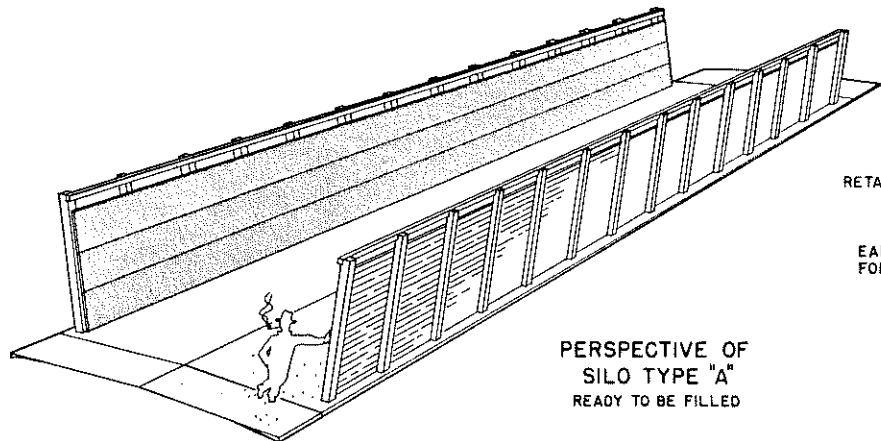
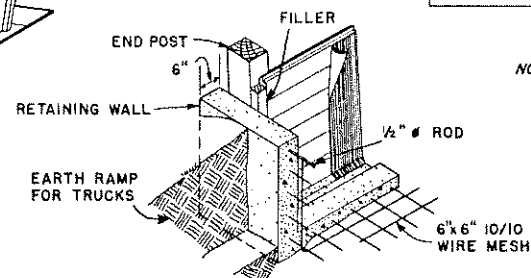


LONGITUDINAL SECTION
TYPE "A" SILO
0 4 8 12 FT.

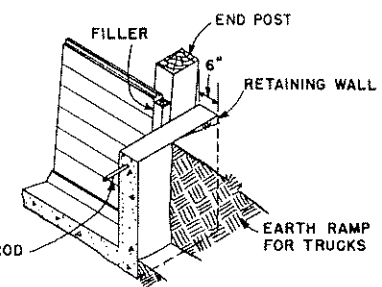


PERSPECTIVE OF
SILO TYPE "A"
READY TO BE FILLED

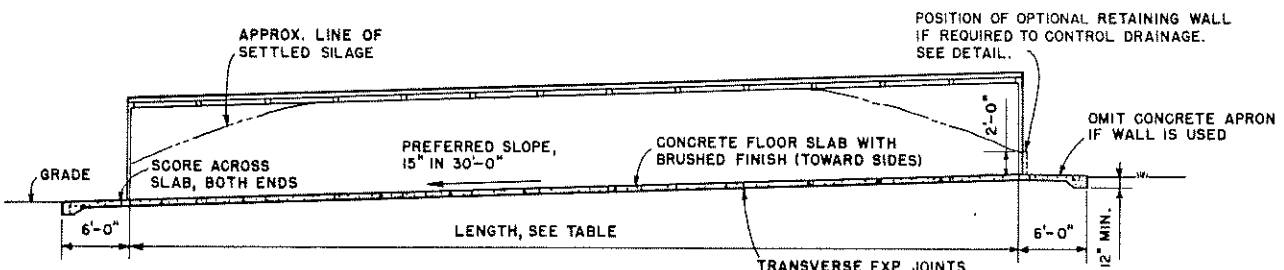


DETAIL OF OPTIONAL RETAINING WALL
TYPE "A" SILO
0 1 2 3 FT.

NOTE: ALL CONCRETE TO BE 1:2 1/2:3 1/2 MIX, WITH NOT MORE THAN 6 GALLONS OF WATER PER BAG OF CEMENT.
ALL WOOD SHOULD BE PRESSURE-TREATED WITH PRESERVATIVE (AFTER CUTTING) TO 8 LBS. PER CUBIC FOOT RETENTION.
STAGGER END JOINTS OF PLANKS IN EACH ROW SO JOINTS FALL ON ALTERNATE POSTS.



DETAIL OF OPTIONAL RETAINING WALL
TYPES "B & C" SILO
0 1 2 3 FT.



LONGITUDINAL SECTION
TYPES "B & C" SILO
0 4 8 12 FT.

TRANSVERSE EXP. JOINTS
NOT OVER 12'-0" O.C.
TYPE "C" SILO ONLY

TYPES A, B, & C SILO					
APPROXIMATE CAPACITIES					
FEEDING PERIOD →		120 DAYS	175 DAYS	210 DAYS	CAPACITY FOR EACH 6 FT. OF LENGTH
HERD SIZE	WIDTH OF SILO	60 FT.	78 FT.	90 FT.	
30 HEAD	16 FT.	114 TONS	163 TONS	196 TONS	16 TONS
37 "	20 "	141 "	202 "	242 "	20 "
44 "	24 "	168 "	240 "	288 "	24 "
51 "	28 "	195 "	278 "	334 "	28 "
58 "	32 "	222 "	317 "	380 "	32 "

CAPACITY IS BASED ON SILAGE WEIGHT OF 40 LBS. PER CUBIC FOOT AND SETTLED DEPTH OF 8 FEET, EXCEPT AT ENDS.

WIDTH OF SILO IS BASED ON HERD SIZE AND ON AN AVERAGE CONSUMPTION OF 60 LBS. OF SILAGE PER ANIMAL PER DAY.

LENGTH OF SILO IS BASED ON 4" DAILY RATE OF USE FOR WARM WEATHER CONDITIONS. LENGTH MAY BE VARIED IN UNITS OF 6 FEET.

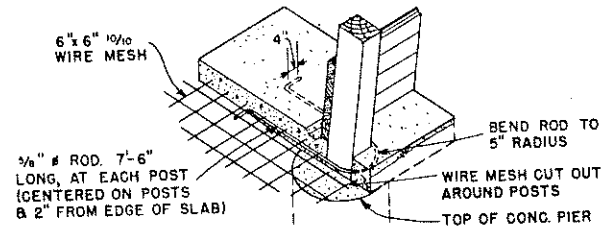
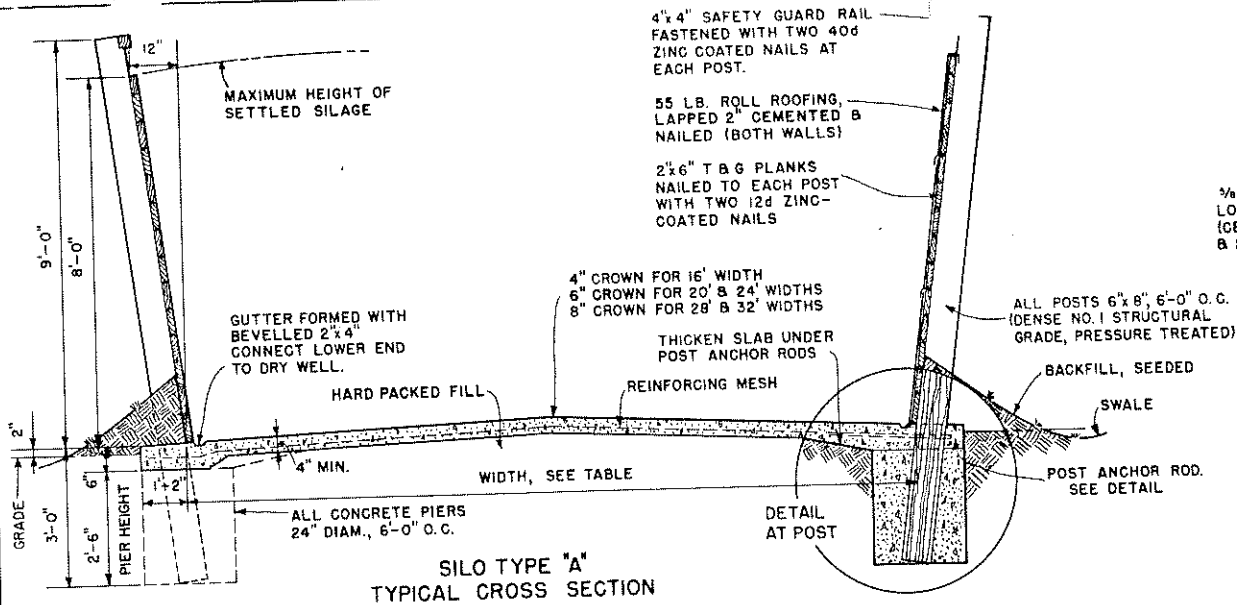
FOR SELF-FEEDING, WITH FREE ACCESS, A SILO WIDTH OF 3" TO 6" PER HEAD IS REQUIRED.

DETAILS OF MOVABLE FENCES FOR SELF-FEEDING ARE SHOWN ON PLAN NO. 5872

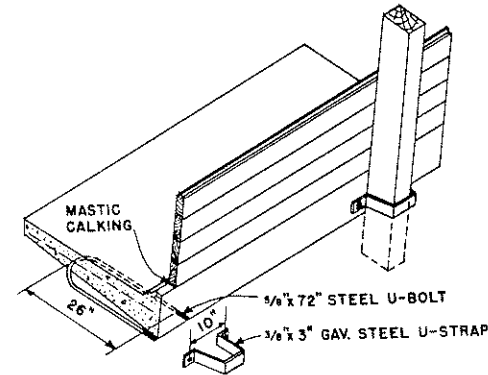
COOPERATIVE EXTENSION WORK IN
AGRICULTURE AND HOME ECONOMICS
DEPARTMENT OF AGRICULTURAL ENGINEERING
UNIVERSITY OF MARYLAND
AND
UNITED STATES DEPARTMENT OF AGRICULTURE COOPERATING.

SILO TYPES A, B, & C

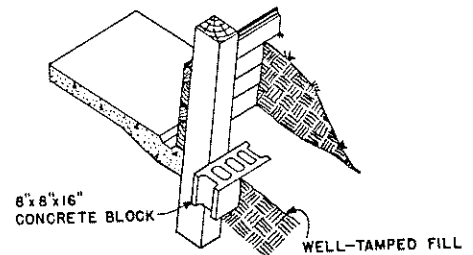
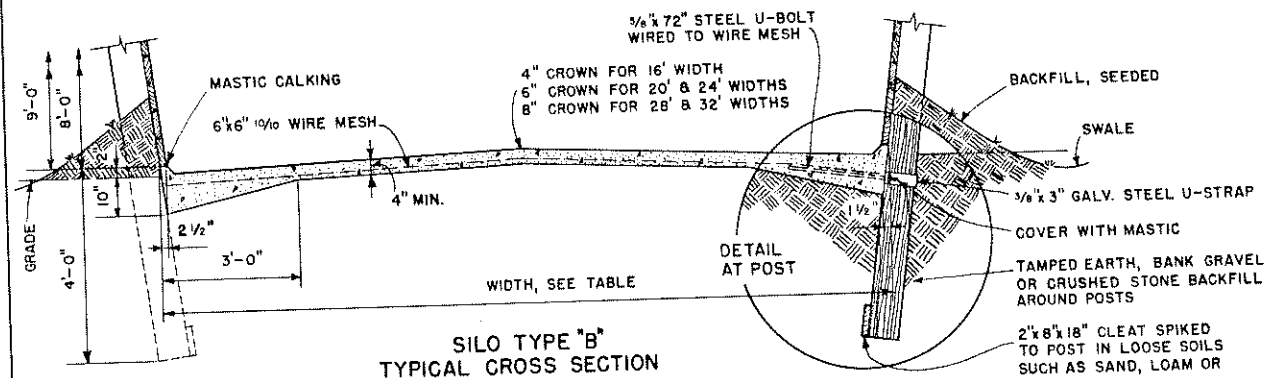
USDA '68 EX. 6048 SHEET 1 OF 2



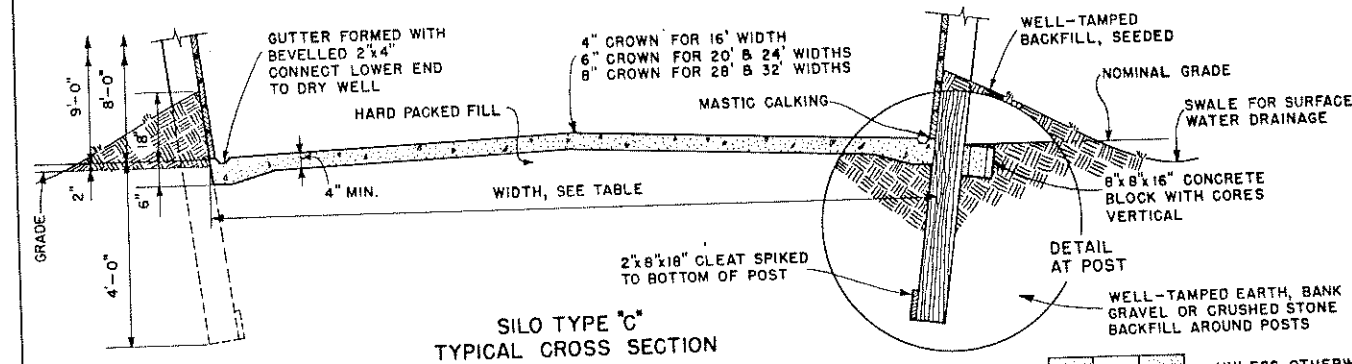
DETAIL OF POST ANCHORAGE SILO TYPE "A"



DETAIL OF POST ANCHORAGE SILO TYPE "B"



POST DETAIL SILO TYPE "C"



NOTE: SCALE: 0 1 2 3 FT. UNLESS OTHERWISE NOTED.

COOPERATIVE EXTENSION WORK IN AGRICULTURE AND HOME ECONOMICS
DEPARTMENT OF AGRICULTURAL ENGINEERING
UNIVERSITY OF MARYLAND
AND
UNITED STATES DEPARTMENT OF AGRICULTURE COOPERATING

SILO TYPES A, B, & C.

USDA '68 EX. 6048 SHEET 2 OF 2