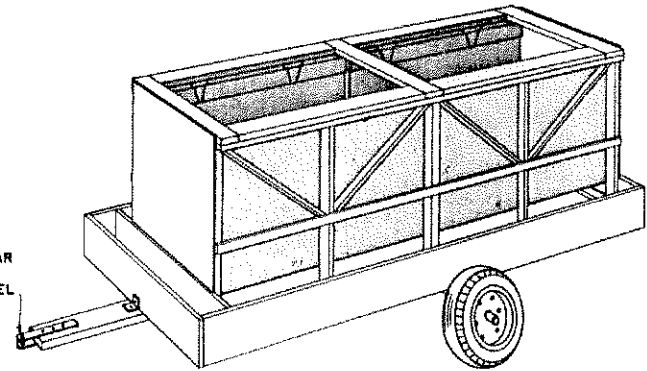


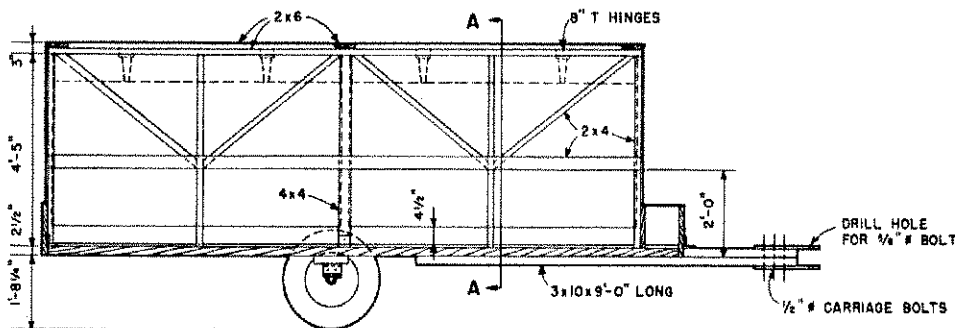
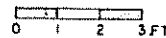
TOP VIEW OF BED FRAME

TOWING BAR
1/2"x3"x18"
FLAT STEEL

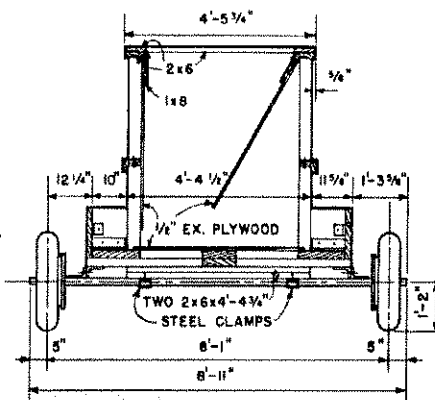


PERSPECTIVE

CONSTRUCTION DETAILS MAY BE MODIFIED TO USE LUMBER AT HAND. JOINTS SHOULD BE WELL NAILED. BOLT THE METAL ANGLE IRON. THIS CONSTRUCTION CAN BE ADAPTED FOR TRAILER MOUNTING, SKIDS, OR PERMANENT, IN-PLACE FEEDERS.



SIDE VIEW WITH THE 2x14 BOARD OFF



SECTION A-A

COOPERATIVE EXTENSION WORK IN
AGRICULTURE AND HOME ECONOMICS
DEPARTMENT OF AGRICULTURAL ENGINEERING
UNIVERSITY OF MARYLAND

AND
UNITED STATES DEPARTMENT OF AGRICULTURE COOPERATING

SELF-FEEDER FOR CATTLE

ORE. '68 EX. 6045 SHEET 1 OF 1