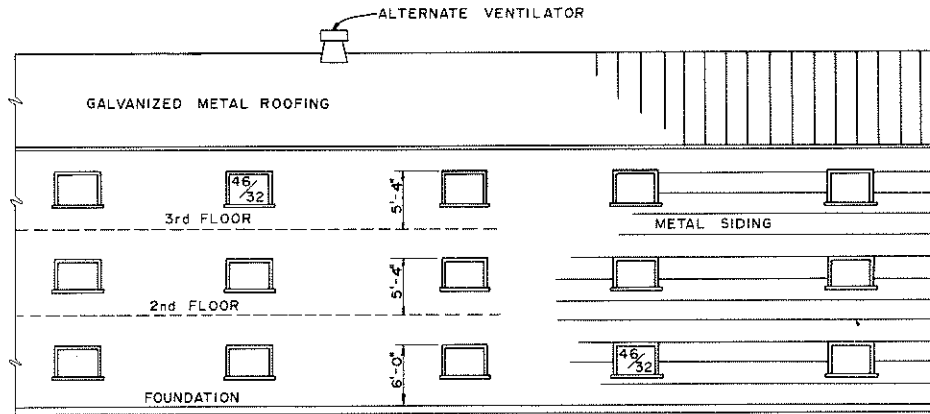
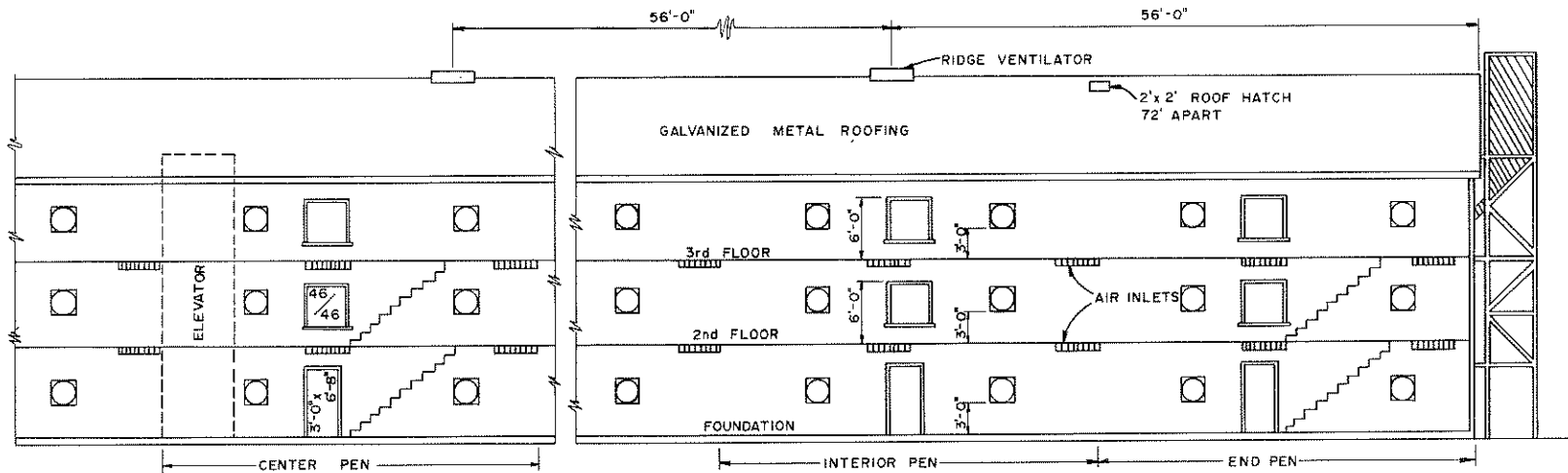


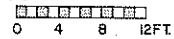
END ELEVATION



NORTH ELEVATION



SOUTH ELEVATION



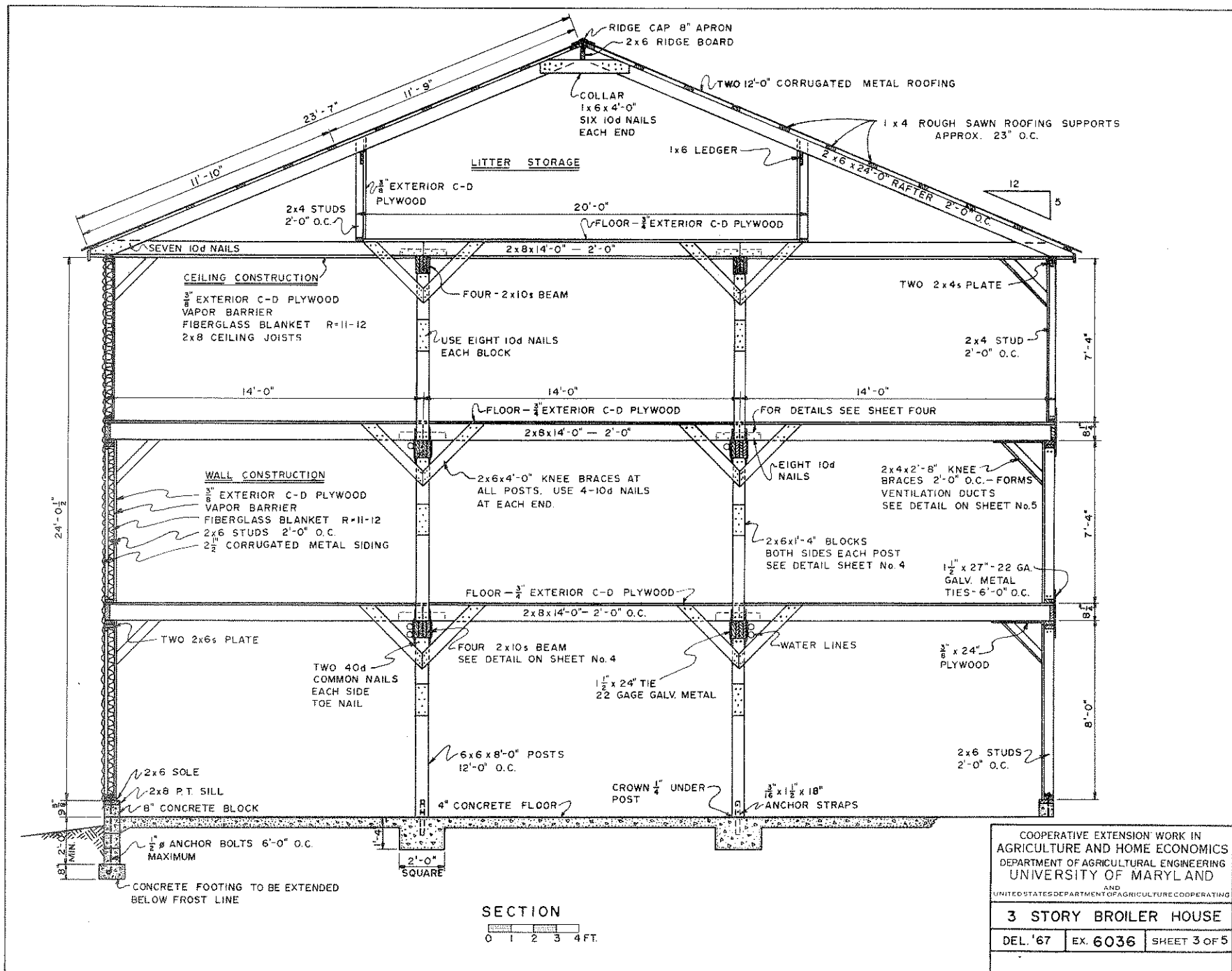
COOPERATIVE EXTENSION WORK IN  
 AGRICULTURE AND HOME ECONOMICS  
 DEPARTMENT OF AGRICULTURAL ENGINEERING  
 UNIVERSITY OF MARYLAND

AND  
 UNITED STATES DEPARTMENT OF AGRICULTURE COOPERATING

**3 STORY BROILER HOUSE**

DEL. '67 EX. 6036 SHEET 1 OF 5

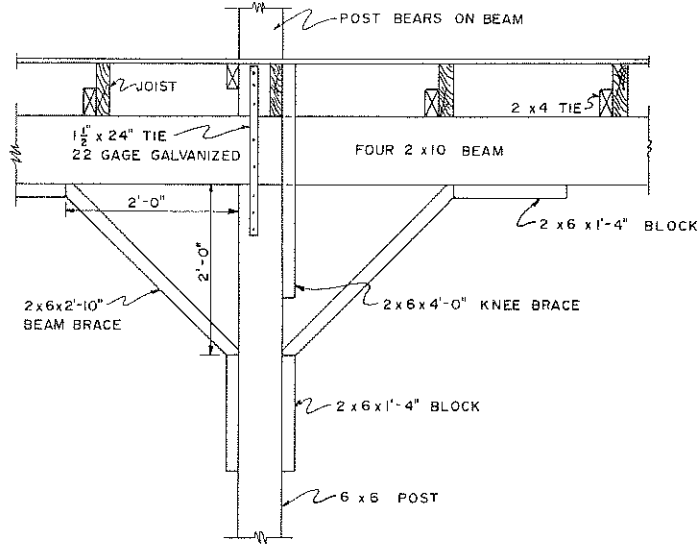




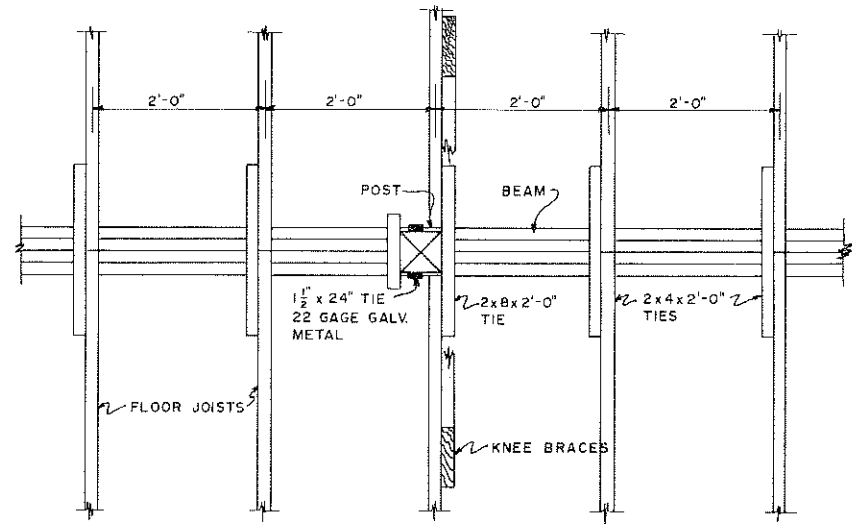
COOPERATIVE EXTENSION WORK IN  
 AGRICULTURE AND HOME ECONOMICS  
 DEPARTMENT OF AGRICULTURAL ENGINEERING  
 UNIVERSITY OF MARYLAND  
 AND  
 UNITED STATES DEPARTMENT OF AGRICULTURE COOPERATING

**3 STORY BROILER HOUSE**

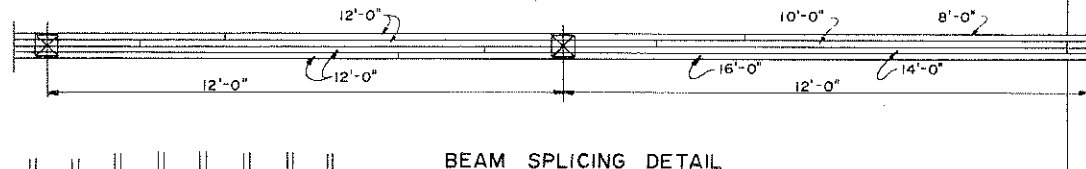
DEL. '67 EX. 6036 SHEET 3 OF 5



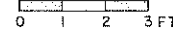
POST DETAIL



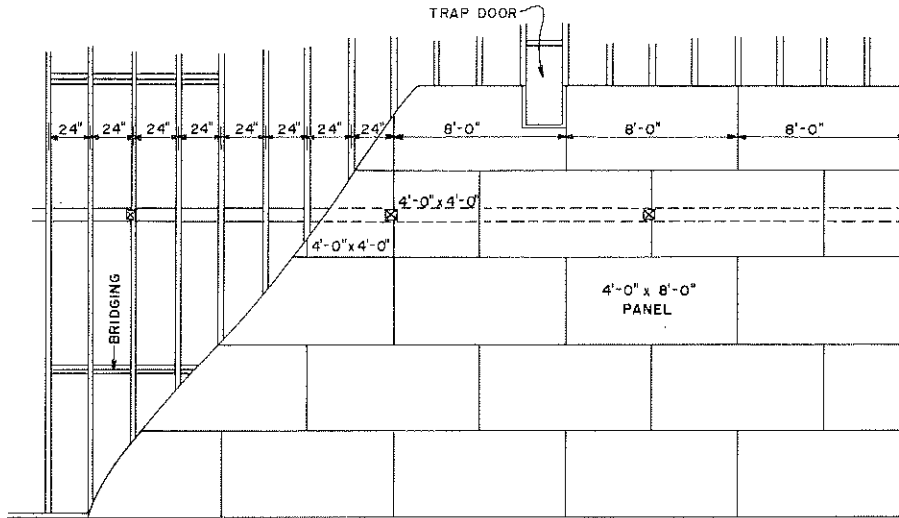
BEAM & JOIST DETAIL



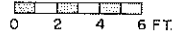
BEAM SPLICING DETAIL



NOTE: NAILING FOR BEAM—  
20d NAILS TO BE PLACED 1 1/2" FROM THE TOP AND BOTTOM EDGES OF BEAM, SPACED 24" APART STAGGERED, DRIVEN FROM BOTH SIDES OF GIRDER ALTERNATELY.



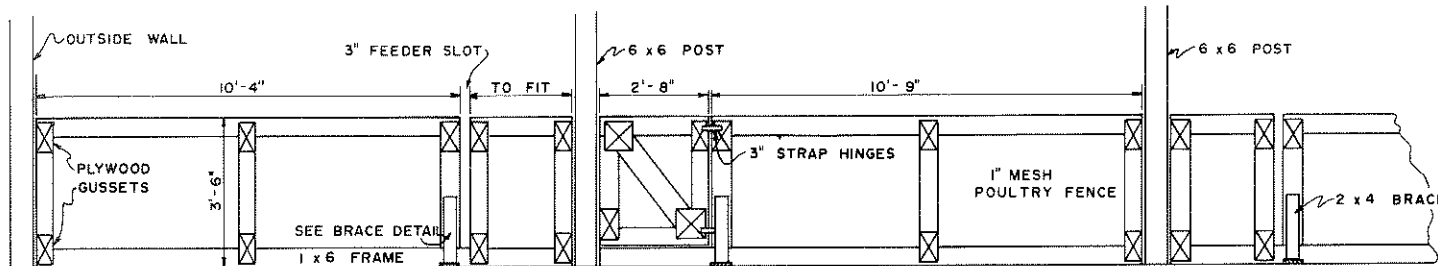
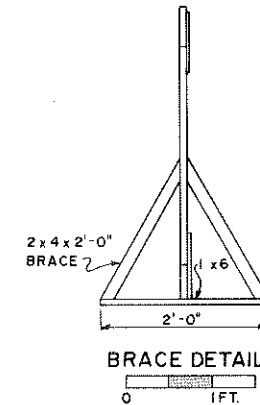
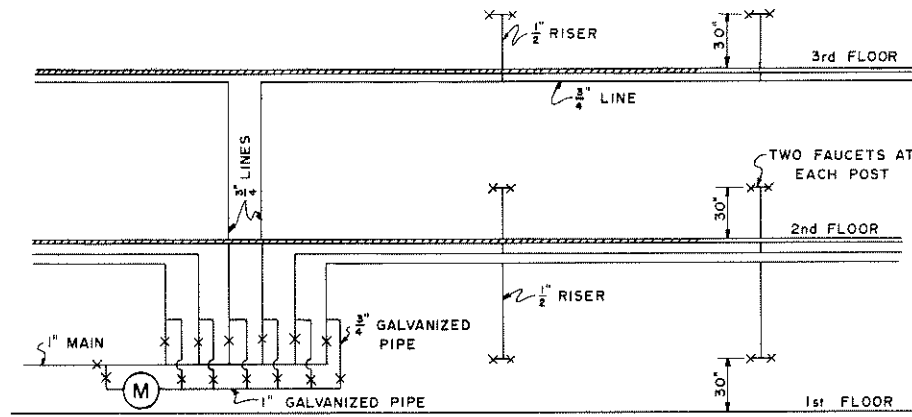
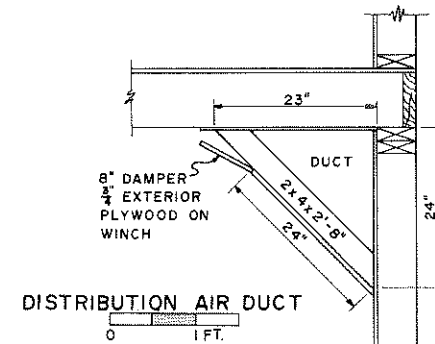
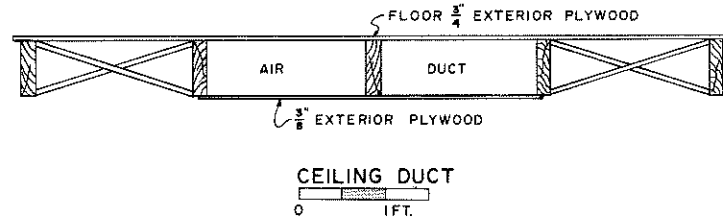
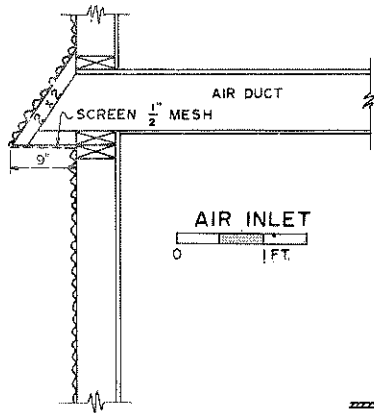
PLYWOOD FLOOR DETAIL



COOPERATIVE EXTENSION WORK IN  
AGRICULTURE AND HOME ECONOMICS  
DEPARTMENT OF AGRICULTURAL ENGINEERING  
UNIVERSITY OF MARYLAND  
AND  
UNITED STATES DEPARTMENT OF AGRICULTURE COOPERATING

3 STORY BROILER HOUSE

DEL. '67 EX 6036 SHEET 4 OF 5



COOPERATIVE EXTENSION WORK IN  
AGRICULTURE AND HOME ECONOMICS  
DEPARTMENT OF AGRICULTURAL ENGINEERING  
UNIVERSITY OF MARYLAND  
AND  
UNITED STATES DEPARTMENT OF AGRICULTURE COOPERATING

3 STORY BROILER HOUSE

DEL. '67 EX. 6036 SHEET 5 OF 5