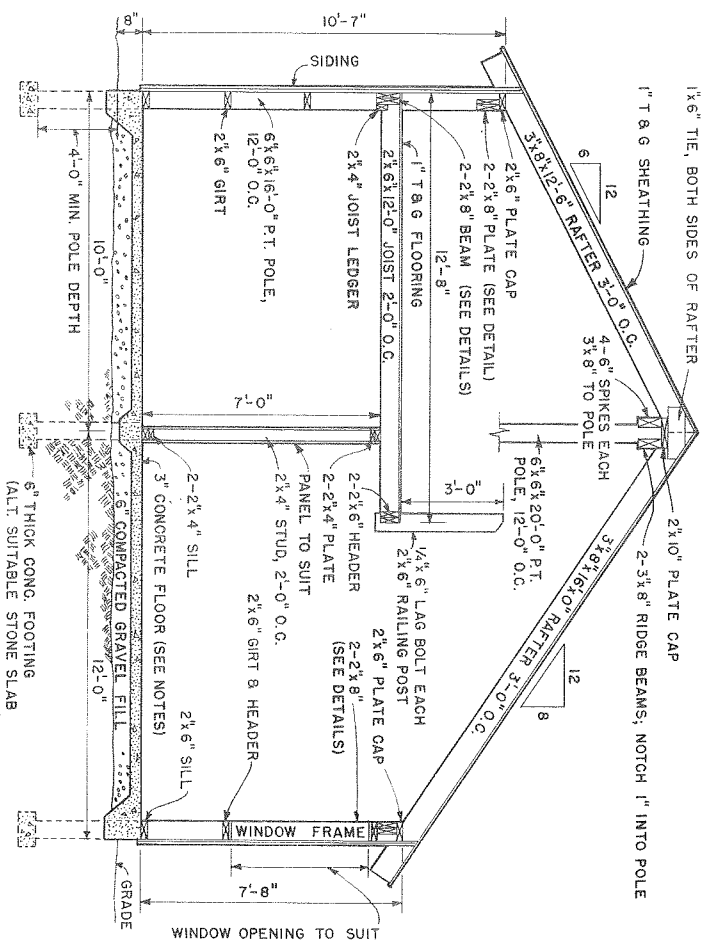
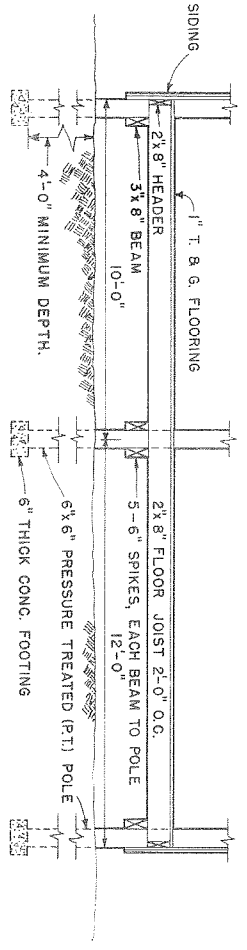


MASS. PLAN MC4622

COOPERATIVE EXTENSION WORK IN AGRICULTURE AND HOME ECONOMICS DEPARTMENT OF AGRICULTURAL ENGINEERING UNIVERSITY OF MARYLAND AND UNITED STATES DEPARTMENT OF AGRICULTURE COOPERATING			
<b>DORMITORY LOFT CABIN</b>			
MASS.	'67	EX 6013	SHEET 1 OF 3



SECTION "A-A"  
0 1 2 3 4 FT.

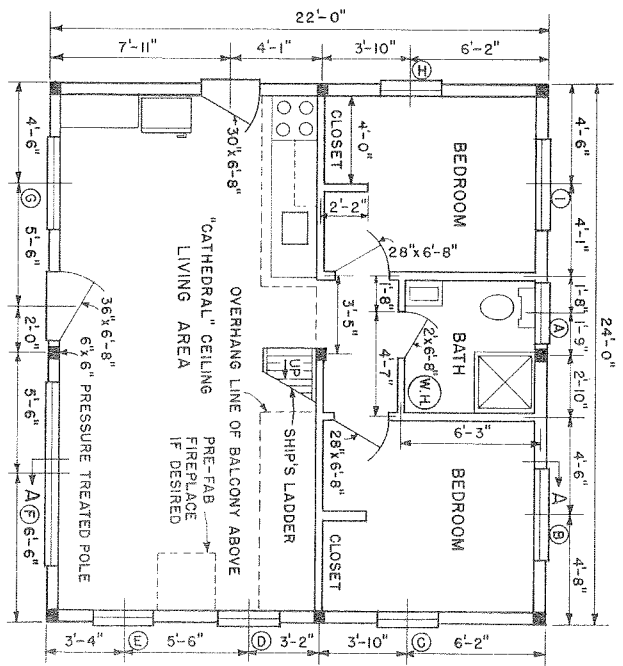


ALTERNATE FLOOR SECTION  
0 1 2 3 4 FT.

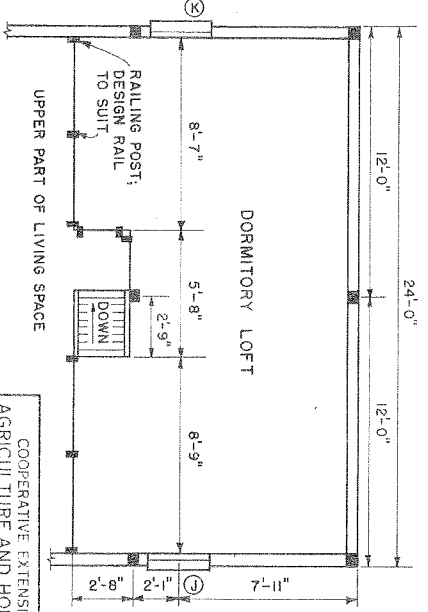
**AWNING WINDOW SCHEDULE**

WINDOW UNIT SIZE	NO. REQ'D	WINDOW UNIT SIZE	NO. REQ'D
A 1-8x2-8	1	G 1-8x4-1	2
B 1-8x4-1	1	H 1-8x2-8	1
C 1-8x2-8	1	I 1-8x4-1	1
D 1-8x2-8	1	J 1-8x2-8	1
E 1-8x2-8	1	K 1-8x2-8	1
F 1-8x4-1	1		

ALL AWNING WINDOW UNIT SIZES ARE APPROXIMATE.  
OTHER WINDOW STYLES OR SIZES MAY BE SUBSTITUTED.



PLAN  
0 2 4 6 FT.

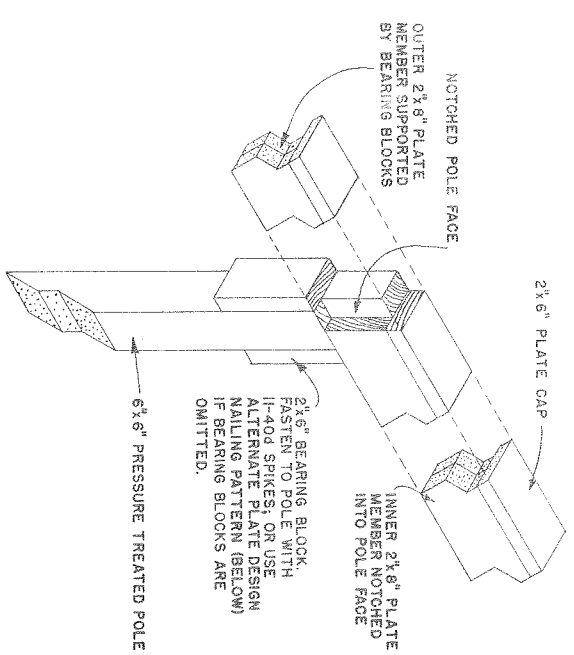


LOFT PLAN  
0 2 4 6 FT.

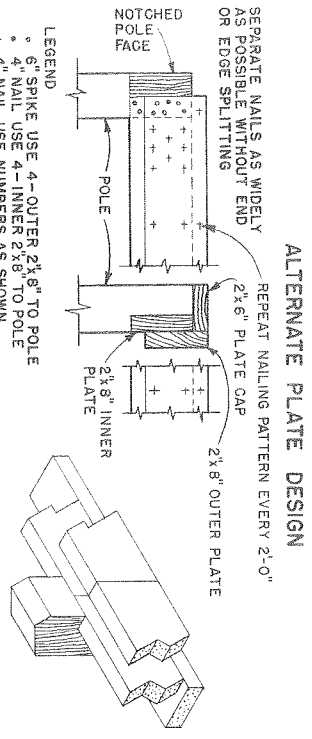
COOPERATIVE EXTENSION WORK IN  
AGRICULTURE AND HOME ECONOMICS  
DEPARTMENT OF AGRICULTURAL ENGINEERING  
UNIVERSITY OF MARYLAND  
AND  
UNITED STATES DEPARTMENT OF AGRICULTURE COOPERATING

**DORMITORY LOFT CABIN**

MASS '67 EX. 6013 SHEET 2 OF 3



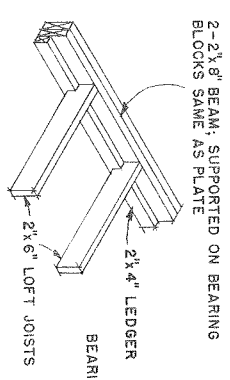
**PLATE POLE DETAIL**  
NO SCALE



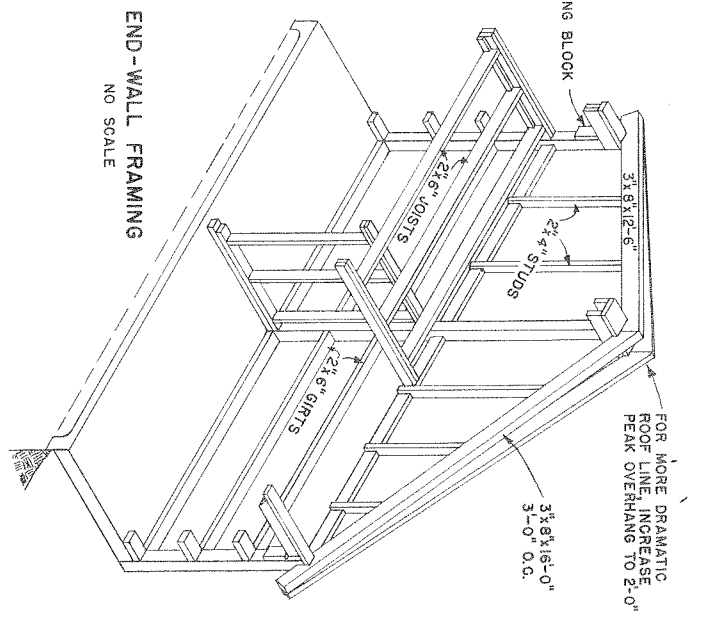
**ALTERNATE PLATE DESIGN**  
NO SCALE

**PLATE NAILING DETAIL**  
NO SCALE

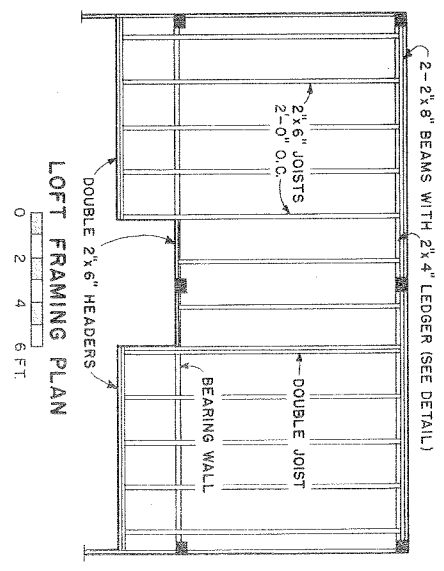
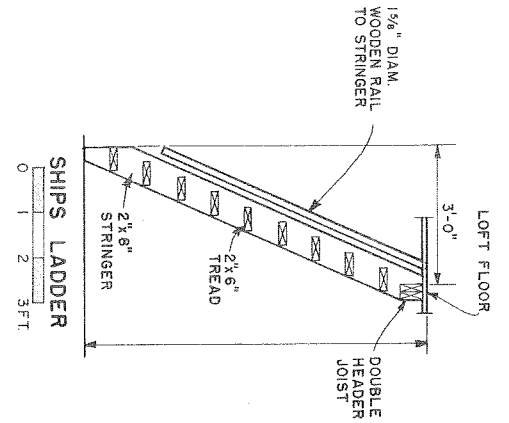
**PLATE POLE DETAIL**  
NO SCALE



**JOIST SUPPORT DETAIL**  
NO SCALE



**END-WALL FRAMING**  
NO SCALE



**CONSTRUCTION NOTES**

1. THIS DESIGN IS BASED ON ROUGH-SAWN EASTERN HEMLOCK.
2. DESIGN ROOF LOAD - 40 LBS. PER SQ. FT.
3. DESIGN FLOOR LOAD (WOOD FRAME) 35 LBS. PER SQ. FT.
4. CONCRETE SLAB FLOOR HAS THICKENED EDGE 12" DEEP, 8" WIDE ALONG BOTTOM EDGE; CONCRETE MIX: 3/4" MAXIMUM AGGREGATE SIZE, 6 1/2 BAGS OF CEMENT PER CUBIC YARD, AND 6 GAL. WATER CEMENT RATIO.
5. FOR CONCRETE SLABS, ON OTHER THAN WELL DRAINED SOIL, WELL COMPACTED USE 6x6, ON OTHER REINFORCING MESH.
6. SPOILED POLE LEADERS ARE FOR CONCRETE SLAB DESIGN. LENGTH OF POLE IS DEPENDENT ON SLOPE OF BUILDING SITE AND SETTING POLE IN GROUND TO MAX. DEPTH OF FIRM FOOTING.
7. CONVENTIONAL STUD FRAME CONSTRUCTION ON MASONRY FOUNDATION MAY BE SUBSTITUTED FOR POLE FRAME IF DESIRED.
8. INTERIOR AND EXTERIOR FINISHES LEFT TO BUILDER'S DISCRETION. NO ATTEMPT WAS MADE TO PROVIDE MODULAR INTERIOR DIMENSIONS. SLIGHT CHANGES IN GIRT SPACING MAY BE DESIRABLE IF INTERIOR FINISHING IS DESIRED.