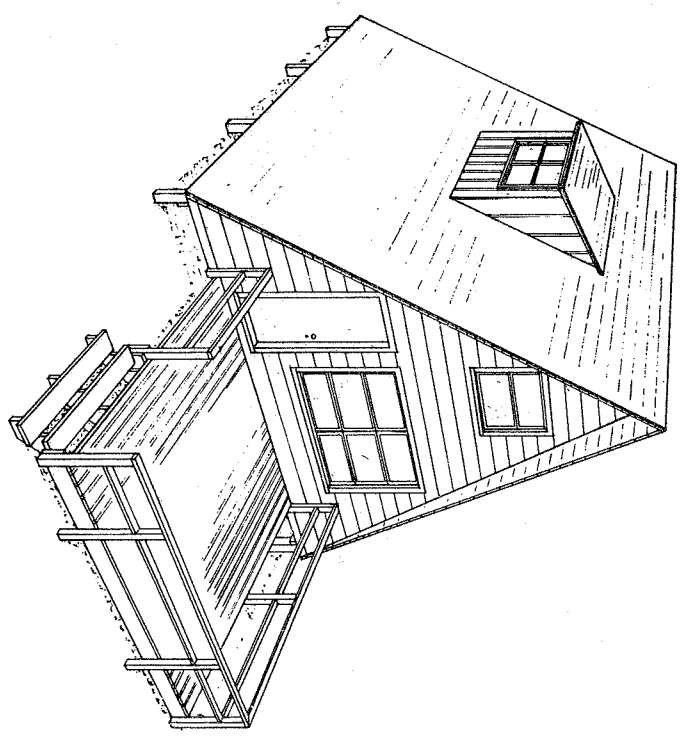
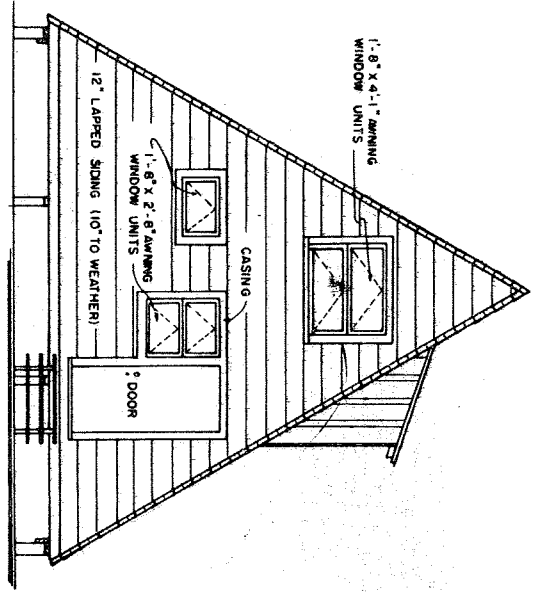


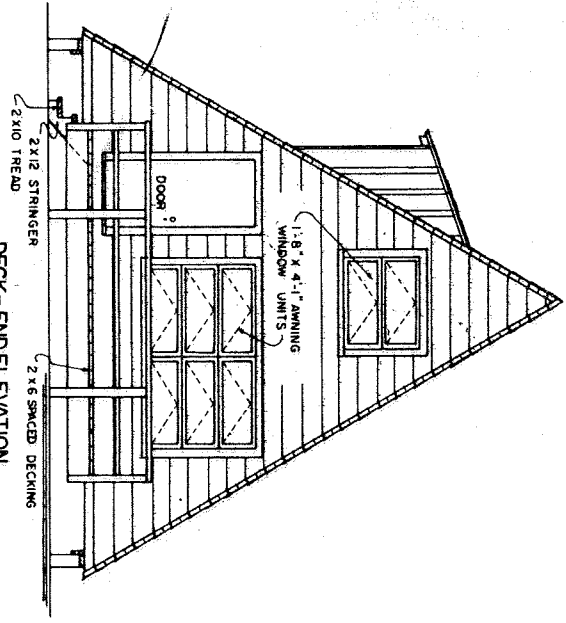
SIDE ELEVATION
0 2 4 6 FT.



PERSPECTIVE



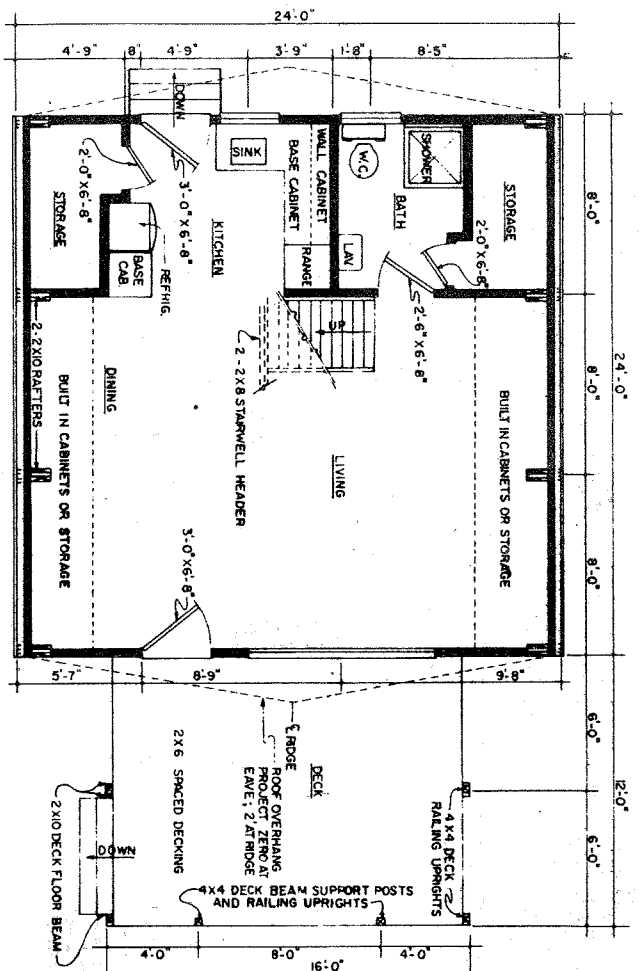
REAR ELEVATION
0 2 4 6 FT.



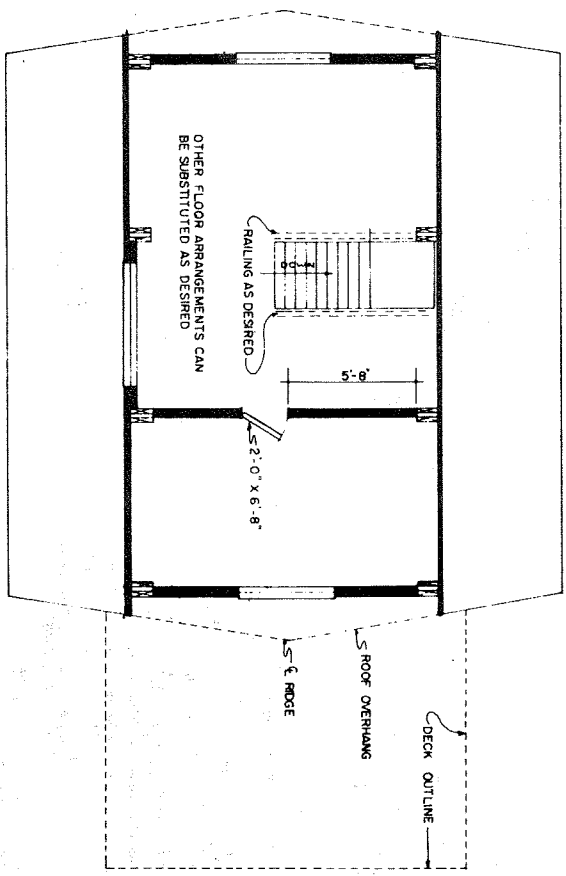
DECK-ENDELEVATION
0 2 4 6 FT.

BASED ON UNIV. OF MASS. PLAN MC-4612
 COOPERATIVE EXTENSION WORK IN
 AGRICULTURE AND HOME ECONOMICS
 DEPARTMENT OF AGRICULTURAL ENGINEERING
 UNIVERSITY OF MARYLAND
 AND
 UNITED STATES DEPARTMENT OF AGRICULTURE COOPERATING

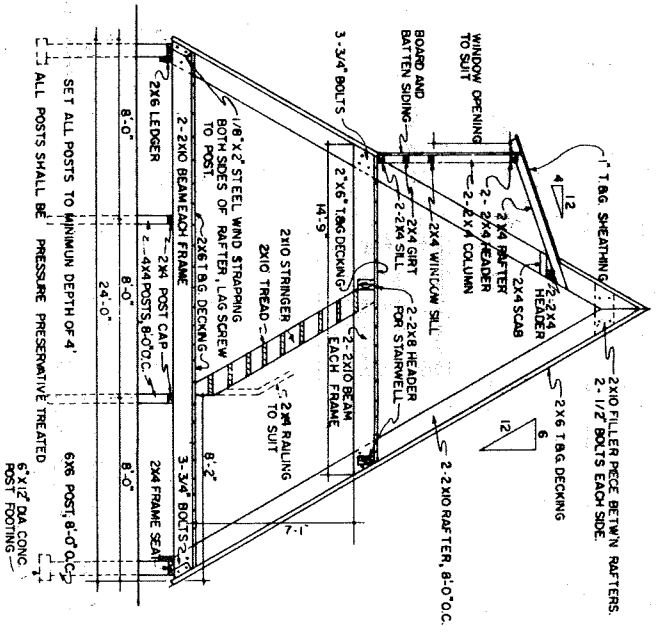
24'-0" A-FRAME CABIN
 MASS. '66 EX. 6003 SHEET 1 OF 2



FLOOR PLAN
0 2 4 6 FT.



2nd FLOOR PLAN
0 2 4 6 FT.



CROSS SECTION
0 2 4 6 FT.

NOTES:

1. DESIGN FLOOR LOAD = 30 PSF
2. DESIGN FIBER STRESS IN BENDING = 1200 PSI
3. FLOOR MEMBER DEFLECTION SHALL BE LIMITED AS MUCH AS POSSIBLE
4. RAFTERS AND FLOOR BEAMS ARE INTENDED TO BE 24 LUNG IN ORDER TO FACILITATE CONSTRUCTION OF THE ROOF
5. LOCATE RAFTER JOINTS ABOVE 2ND FLOOR LEVEL AND FLOOR-BEAM JOINTS (STAGGER JOINTS IN TWO FLOOR BEAMS) ABOVE THE INTERIOR SUPPORT POSTS
6. ALL STRUCTURAL FRAMING SHALL BE ROUGH LUMBER (ROUGH DIMENSIONS NOMINAL SIZE) UNLESS SPECIFIED FOR END USE. OTHER MATERIALS OR METHODS MAY BE SUBSTITUTED IF DESIRED
7. ALL FINISHING WINDOWS UNIT SIZE ARE AND/OR STYLES MAY BE SUBSTITUTED AS DESIRED. INTERIOR FINISH IS LEFT TO BUILDER'S DISCRETION.