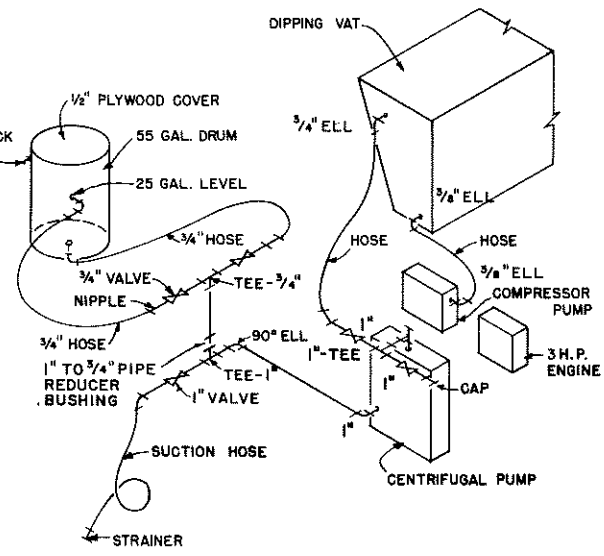
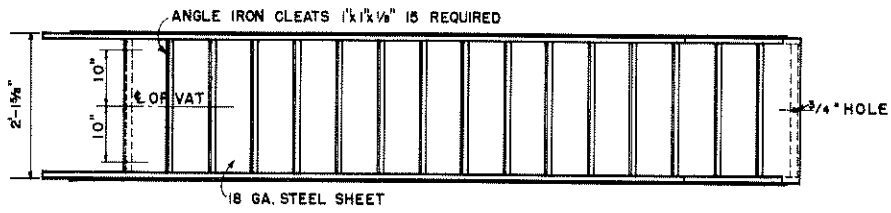


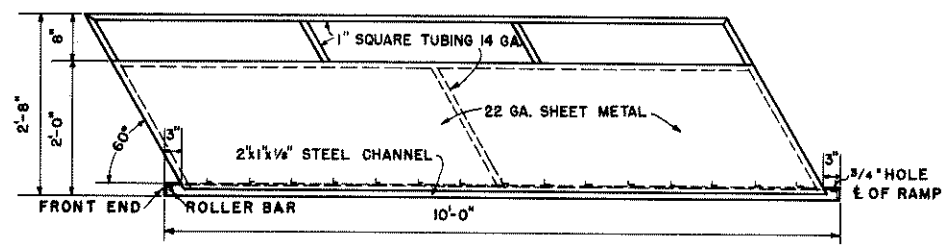
PLAN
SHOWING LOCATION OF ENGINE,
PUMP, COMPRESSOR, & DRUM



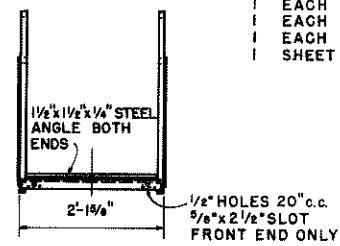
**ISOMETRIC OF
PLUMBING LAYOUT**
NO SCALE



PLAN OF UP RAMP



SIDE ELEVATION



END ELEVATION

MATERIAL LIST

4	SHEETS	11 GA. MILD STEEL 4'x10'
1	SHEET	18 GA. MILD STEEL 4'x8'
5	SHEETS	22 GA. MILD STEEL 4'x8'
1	SHEET	11 GA. MILD STEEL CHECKERED PLATE 4'x8'
3	PIECES	MILD STEEL CHANNEL IRON 6 1/2"x20"x 1/4"
2	PIECES	MILD STEEL CHANNEL IRON 2 1/2"x20"x 1/8"
4	PIECES	MILD STEEL ANGLE IRON 1 1/2"x20"
4	PIECES	MILD STEEL ANGLE IRON 2 1/2"x20"
4	PIECES	MILD STEEL ANGLE IRON 1 1/2"x1 1/2"x20"
1	PIECES	MILD STEEL BAR STOCK 1/2"x1 1/2"x20"
1	PIECE	MILD STEEL BAR STOCK 1/2"x1 1/2"x4'
1	PIECE	MILD STEEL BAR STOCK 1/2"x6"x10'
1	SHEET	EXPANDED METAL (4 LBS. PER FOOT) 4'x8'
14	PIECES	1" SQUARE TUBING, 14 GA. x 20"
3	PIECES	1/2" SQUARE TUBING, 14 GA. x 20"
2	PIECE	1/2" ROUND ROD 20"
1	PIECE	1/4" ROUND ROD 20"
1	LENGTH	GALVANIZED PIPE 1"x21'
3	EACH	1" PIPE, GALVANIZED, ELBOW 90°
2	EACH	1" PIPE, GALVANIZED, CAP
2	EACH	1" PIPE, GALVANIZED, TEE
1	EACH	1" TO 3/4" PIPE REDUCER BUSHING
3	EACH	1" PIPE, GALVANIZED, NIPPLES 3"
1	EACH	1" GLOBE VALVE & 1" CHECK VALVE
2	EACH	1" GLOBE VALVE
1	LENGTH	1" SUCTION HOSE WITH COUPLINGS 15' LONG
1	LENGTH	3/4" HEAVY DUTY HOSE 25' LONG
1	EACH	55 GAL. DRUM & 1 MANUAL CLUTCH (DISC.)
1	EACH	CENTRIFUGAL PUMP, SELF PRIMING, 2.5 GAL. PER MIN.
1	EACH	3 H.P. ENGINE & 4 ENGINE MTDG. PADS (NO. 8 RUB. CORN.)
1	EACH	V-BELT & 1 EA. 2" V BELT PULLEY WHEEL 3/4" BORE
1	EACH	COMPRESSOR PUMP, AIR, 3 CU. FT. PER MIN.
1	EACH	AXEL SPINDLE 3/4" x 7 1/2"
1	EACH	FREE ROLL HUB 3/4" BORE I.D.
1	EACH	WHEEL, TIRE AND TUBE, 10" DIA.
1	EACH	TRAILER HITCH, HEAVY DUTY, 5000 LB. GROSS
1	EACH	SAFETY CHAIN 5/16"x10' LG. WITH 2 HOOKS
1	KIT	STOPLIGHT AND TURN SIGNAL KIT
2	EACH	3" REFLECTORS
1	EACH	COIL 16 GA. PLASTIC COVERED AUTO WIRE
6	EACH	HOSE CLAMP 3/4"
3	EACH	HOSE CLAMP 1"
2	EACH	WHEEL, TIRE AND TUBE, 600 x 16" x 6 PLY
2	EACH	AXEL SPINDLE
2	EACH	HUB
3	BOXES	WELDING ELECTRODE 1/8" AC OR DC, 10 LB.
2	BOXES	WELDING ELECTRODE 5/32 AC OR DC, 10 LB.
1	PIECE	1" PLASTIC PIPE 5' LONG
6	QUARTS	RED LEAD PRIMER PAINT, 1 QT. EPOXY PRIMER, PAINT
300	EACH	POP RIVETS 1/8" DIA. x 1/4" LONG
100	EACH	POP RIVETS 1/8" DIA. x 3/8" LONG
2	PAIR	HINGES, HEAVY DUTY 8" T
2	PAIR	HINGES, HEAVY DUTY 4"x6" BUTT
1	PAIR	HINGES, HEAVY DUTY 2"x2" BUTT
1	PAIR	HINGES, HEAVY DUTY 4" T
1	EACH	HASP 4"
1	EACH	3/4" GALV. PIPE NIPPLE 4" LONG
2	EACH	3/4" GALV. PIPE NIPPLE 2" LONG
3	EACH	3/4" GLOBE VALVES
1	EACH	3/4" GALV. PIPE TEE
4	EACH	3/4" GALV. PIPE COUPLING
4	EACH	3/4" GALV. PIPE TO HOSE COUPLING
1	EACH	3/8" GALV. PIPE 90° ELL
1	EACH	3/8" GALV. PIPE NIPPLE 2" LONG
2	EACH	1/2" GALV. PIPE COUPLING 2" LONG
1	EACH	1" GALV. PIPE COUPLING
1	EACH	REMOTE CONTROL THROTTLE
1	EACH	RUBBER WEATHERSTRIPPING 5/16" x 3/4" x 8'
1	SHEET	EXTERIOR PLYWOOD 1/2" x 4' x 8'

0 1 2 FT.

COOPERATIVE EXTENSION WORK IN
AGRICULTURE AND HOME ECONOMICS
DEPARTMENT OF AGRICULTURAL ENGINEERING
UNIVERSITY OF MARYLAND
AND
UNITED STATES DEPARTMENT OF AGRICULTURE COOPERATING

**PORTABLE DIPPING VAT
FOR SHEEP**

USDA '66 EX. 5999 SHEET 3 OF 3