

NOTES:

LENGTH OF BUILDING MAY BE VARIED IN UNITS OF 16 FEET.

ALL POSTS AND WOOD IN CONTACT WITH THE GROUND TO BE PRESSURE-TREATED WITH PRESERVATIVE TO A RETENTION OF 6 LBS. PER CU. FT.

FRAMING AROUND FAN SHOULD BE CUT TO FIT SIZE OF FAN USED.

THE NESTS ARE BUILT IN SECTIONS SO THEY CAN BE REMOVED AND THOROUGHLY CLEANED BETWEEN FLOCKS.

EQUIP WITH AN ADEQUATE LIGHTNING PROTECTION SYSTEM WHERE NEEDED.

PANEL CONSTRUCTION-
2" x 4" FRAME COVERED ON BOTH SIDES WITH 3/8" EXTERIOR PLYWOOD. INSIDE OF PANEL TO HAVE A 4 TO 6 MIL POLYETHYLENE VAPOR BARRIER NEXT TO THE INSULATION.

VENTILATION REQUIREMENTS-

FOR WINTER OPERATION-

TURN BOTH SINGLE POLE SWITCHES "ON" SET NO. 1 THERMOSTAT AT 50°-55° AND NO. 2 THERMOSTAT AT 40°-45°. ADJUST RECYCLING TIMER TO OPERATE FANS ABOUT 1/3 OF TIME WHEN NO. 1 THERMOSTAT IS OFF.

FOR SUMMER OPERATION

TURN NO. 2 SINGLE POLE SWITCH TO "OFF" POSITION TO STOP MOTOR IN TIMER. SET NO. 1 THERMOSTAT AT ABOUT 80°.

USE A SET OF THE CONTROLS (SEE DIAGRAM BELOW) FOR EACH PAIR OF FANS.

FAN CAPACITY, 4.5 CFM PER BIRD.

WIRING DIAGRAM FOR FANS SHOWN BELOW.

WIRING REQUIREMENTS-

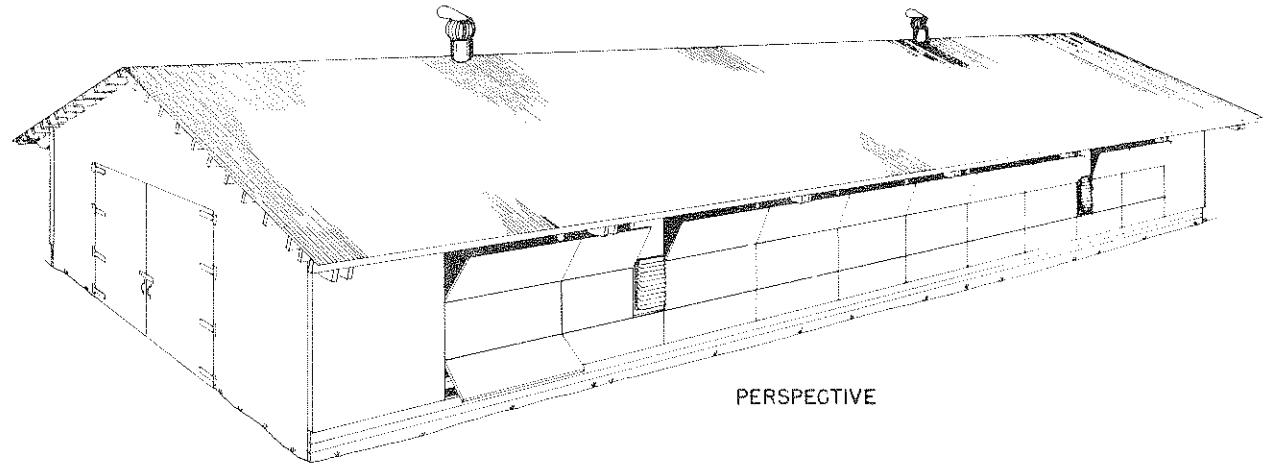
100 FT. CIRCUIT WITH 60 W. LAMP EACH 16 FT. - 360 W. - NO. 12 WIRE.

150 FT. CIRCUIT WITH 60 W. LAMP EACH 16 FT. - 540 W. - NO. 12 WIRE.

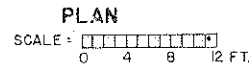
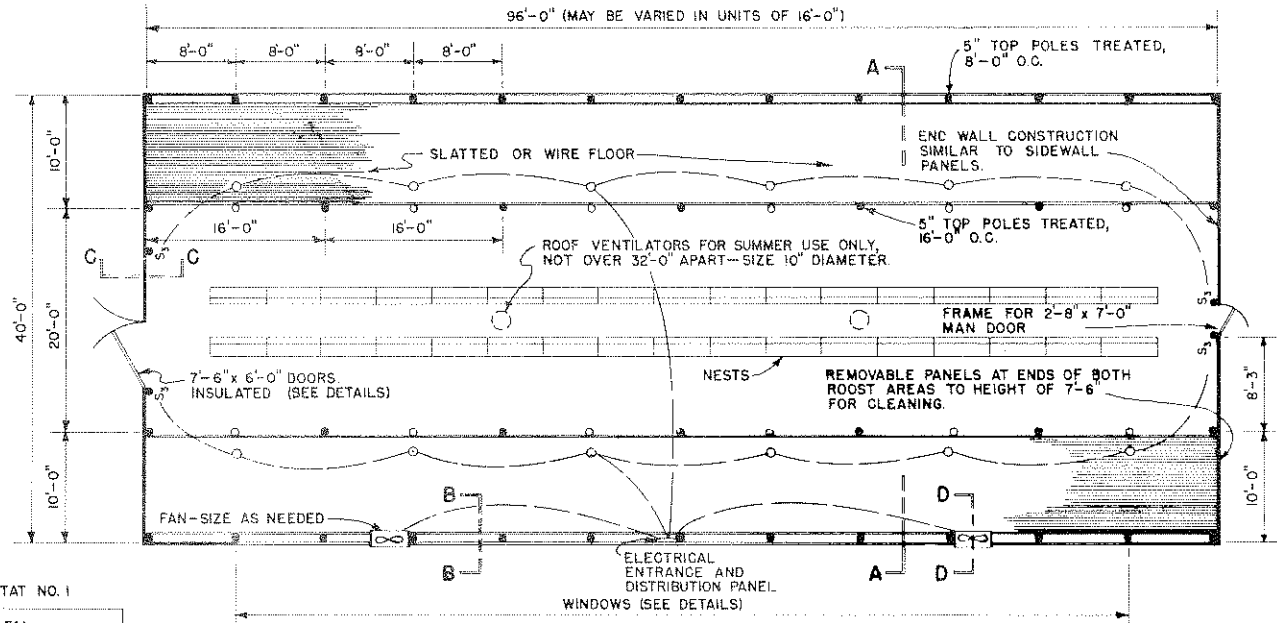
200 FT. CIRCUIT WITH 60 W. LAMP EACH 16 FT. - 750 W. - NO. 10 WIRE.

FOR CIRCUITS OVER 200 FT. CONSULT ENGINEER OR POWER SUPPLIER.

LOCATE ENTRANCE EQUIPMENT AND DISTRIBUTION PANEL AT MIDDLE OF THE BUILDING WHEN LENGTH EXCEEDS 200 FT.

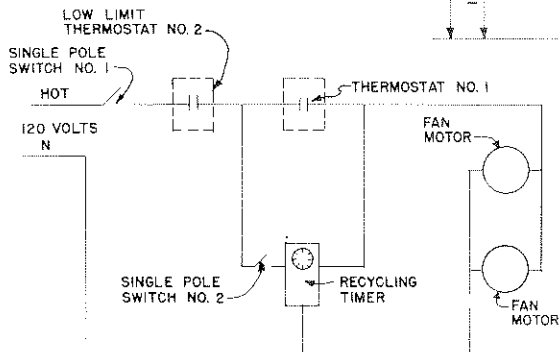


PERSPECTIVE



LEGEND:

- S₃ - THREE-WAY SWITCH
- - 60 WATT LAMP WITH REFLECTOR
- - ROOF VENTILATORS - SUMMER USE ONLY

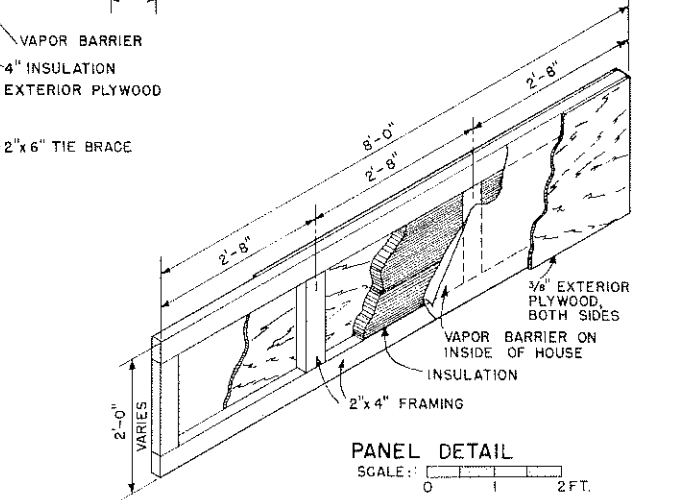
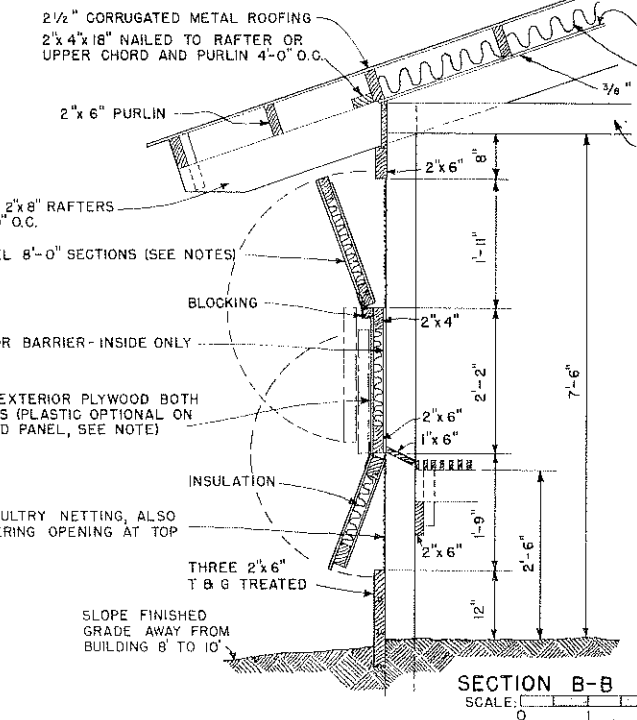
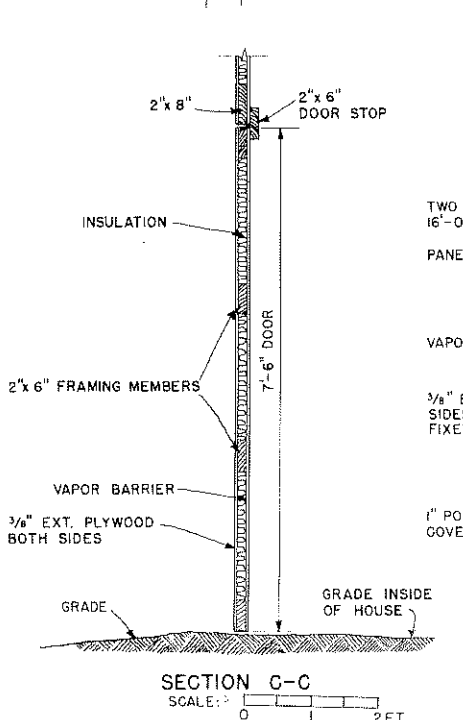
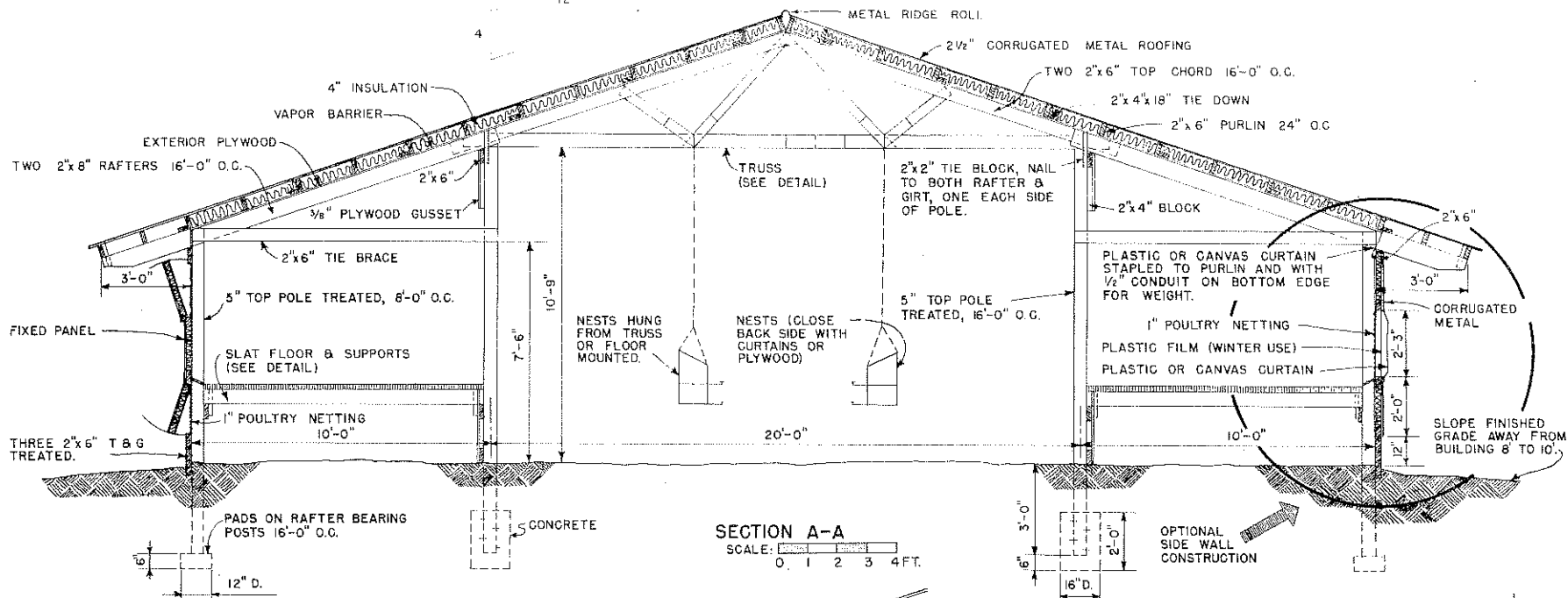


WIRING DIAGRAM FOR CONTROLLING FANS.

COOPERATIVE EXTENSION WORK IN
AGRICULTURE AND HOME ECONOMICS
 DEPARTMENT OF AGRICULTURAL ENGINEERING
 UNIVERSITY OF MARYLAND
AN AMERICAN UNIVERSITY
 UNITED STATES DEPARTMENT OF AGRICULTURE COOPERATING

LAYING HOUSE

USDA '65 EX. 5990 SHEET 1 OF 4

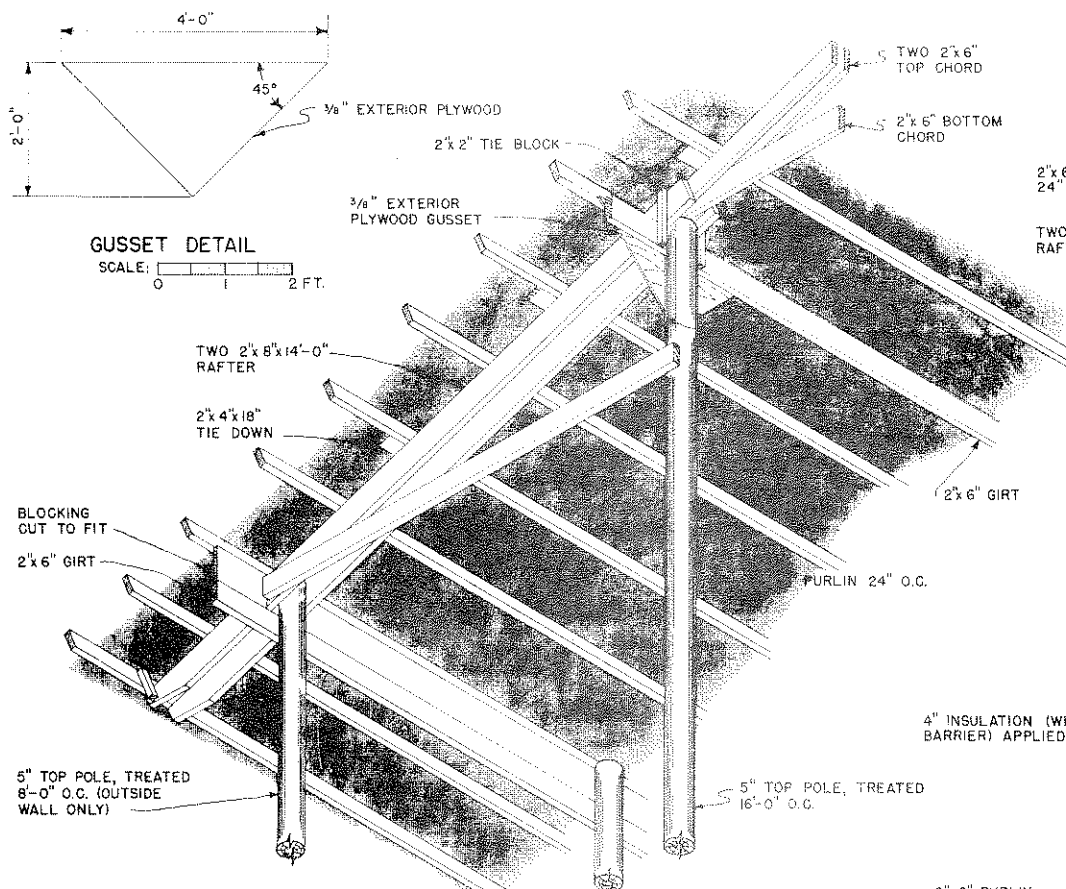


NOTE:
IF ADDITIONAL LIGHT IS DESIRED INSIDE OF HOUSE, REPLACE PLYWOOD WITH PLASTIC FILM AND OMIT INSULATION IN FIXED WALL PANEL.

COOPERATIVE EXTENSION WORK IN AGRICULTURE AND HOME ECONOMICS
DEPARTMENT OF AGRICULTURAL ENGINEERING
UNIVERSITY OF MARYLAND
AND
UNITED STATES DEPARTMENT OF AGRICULTURE COOPERATING

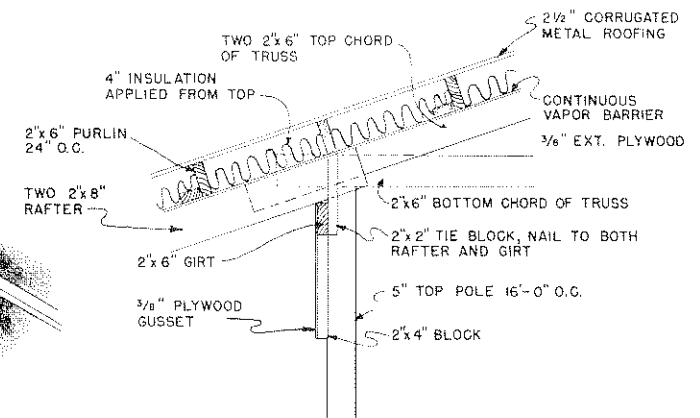
LAYING HOUSE

USDA '65	EX. 5990	SHEET 2 OF 4
----------	----------	--------------

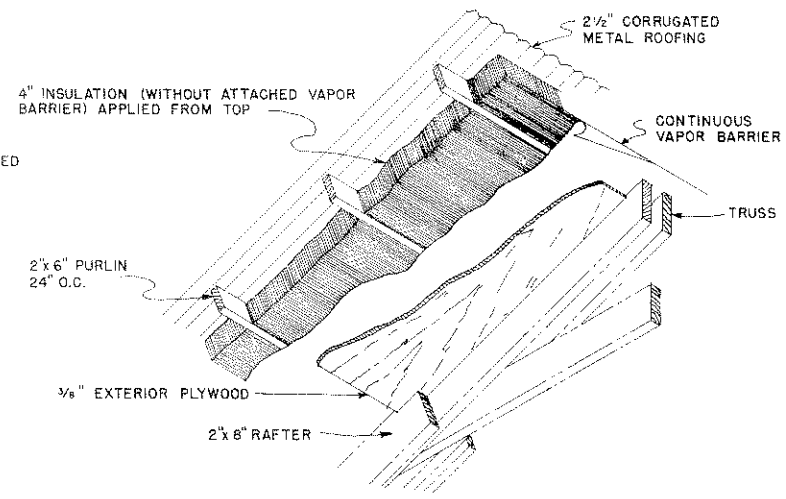


GUSSET DETAIL
SCALE: 0 1 2 FT.

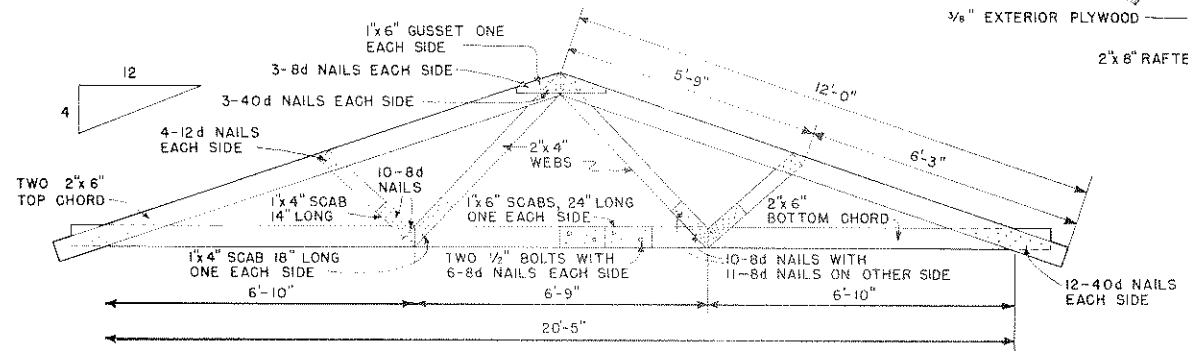
VIEW OF ROOF FRAMING
SCALE: 0 1 2 3 FT.



TRUSS-RAFTER CONNECTION
SCALE: 0 1 2 FT.



INSULATION DETAIL
SCALE: 0 1 2 FT.

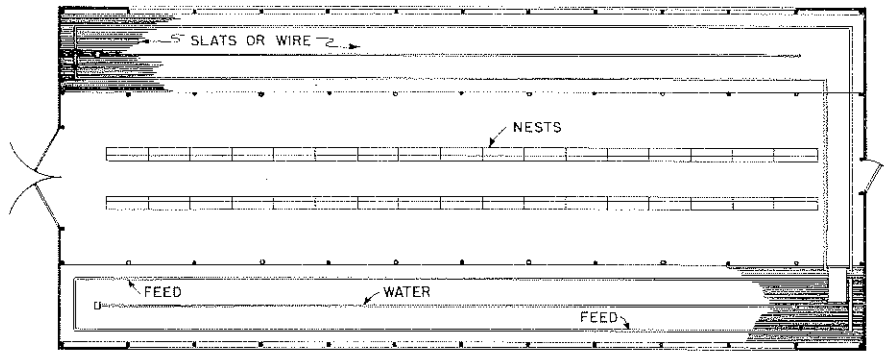


TRUSS DETAIL
SCALE: 0 1 2 3 FT.

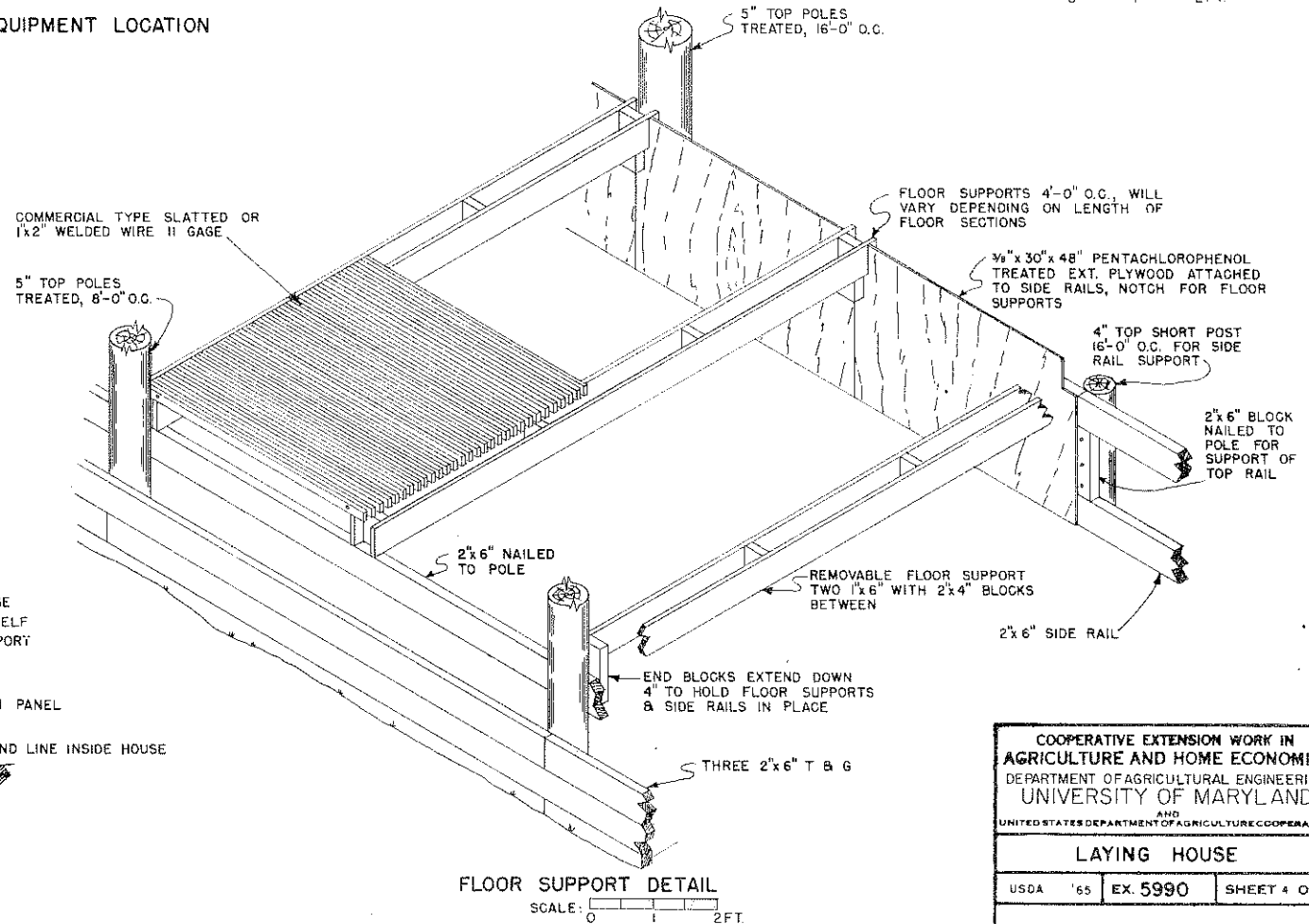
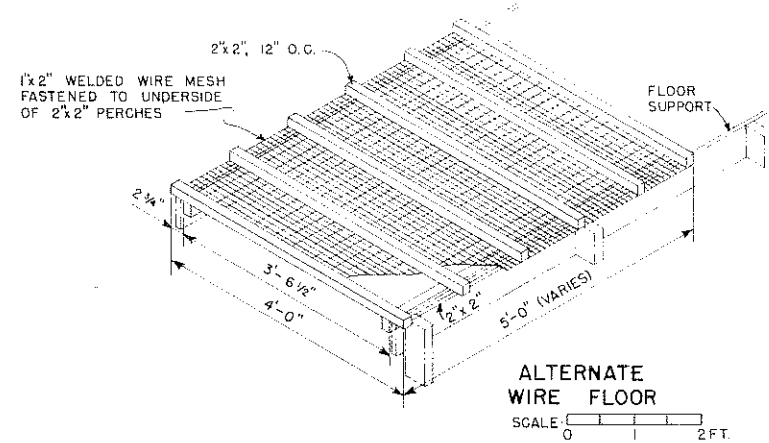
COOPERATIVE EXTENSION WORK IN
 AGRICULTURE AND HOME ECONOMICS
 DEPARTMENT OF AGRICULTURAL ENGINEERING
 UNIVERSITY OF MARYLAND
 AND
 UNITED STATES DEPARTMENT OF AGRICULTURE COOPERATING

LAYING HOUSE

USDA '65	EX. 5990	SHEET 3 OF 4
----------	----------	--------------



EQUIPMENT LOCATION



COOPERATIVE EXTENSION WORK IN
 AGRICULTURE AND HOME ECONOMICS
 DEPARTMENT OF AGRICULTURAL ENGINEERING
 UNIVERSITY OF MARYLAND
 AND
 UNITED STATES DEPARTMENT OF AGRICULTURE COOPERATING

LAYING HOUSE

USDA '65 EX. 5990 SHEET 4 OF 4