

2-2" x 12" GIRDERS OVER THIS SPAN AT BOTH ENDS OF BUILDING - BRACE ACCORDING TO DETAIL A, SHEET 2

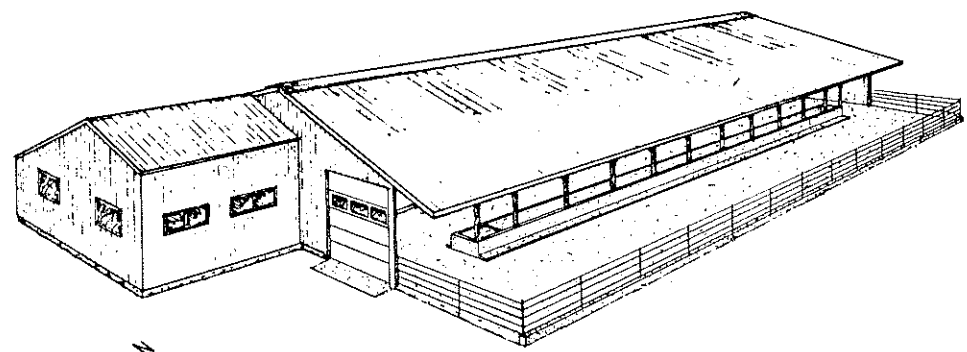
DOOR AND WINDOW SCHEDULE
MILK ROOM & MILKING PARLOR

- ① 2'-4" x 6'-8"
- ② 3'-0" x 6'-8"
- ③ 3'-0" x 6'-8" WITH A 2'-0" x 6'-8" REMOVABLE PANEL ADJACENT
- ④ 3'-0" x 6'-8"
- ⑤ CONSULT MANUFACTURER'S SPECS.
- Ⓐ 2'-0" x 3'-2"
- Ⓑ 2'-3'-0" x 3'-2"
- Ⓒ 2'-3'-0" x 7'-8"

PLAN

NOTES

1. CONSULT LOCAL HEALTH AUTHORITIES BEFORE STARTING CONSTRUCTION TO BE SURE THAT PLAN CONFORMS WITH LOCAL AND STATE REGULATIONS.
2. CONSULT WITH COW STALL MANUFACTURER PRIOR TO POURING MILKING PARLOR FLOOR AND PIT CURBING.
3. CONCRETE TO BE 3000 PSI AIR-ENTRAINED MIX.
4. FOOTINGS TO BEAR ON SOLID GROUND BELOW FROST LINE.
5. CONCRETE FLOORS TO HAVE A BROOM FINISH.
6. USE "CONSTRUCTION" GRADE DOUGLAS FIR OR NO. 1 SOUTHERN PINE, MINIMUM FIBER STRESS OF 1500 LB/SQ IN., FOR TRUSSES AND GIRDER MEMBERS.
7. UNLESS OTHERWISE SPECIFIED, USE RING OR SPIRAL SHANK NAILS THROUGHOUT.

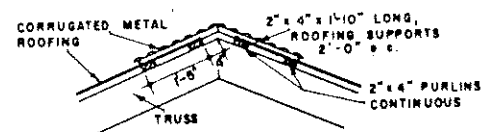
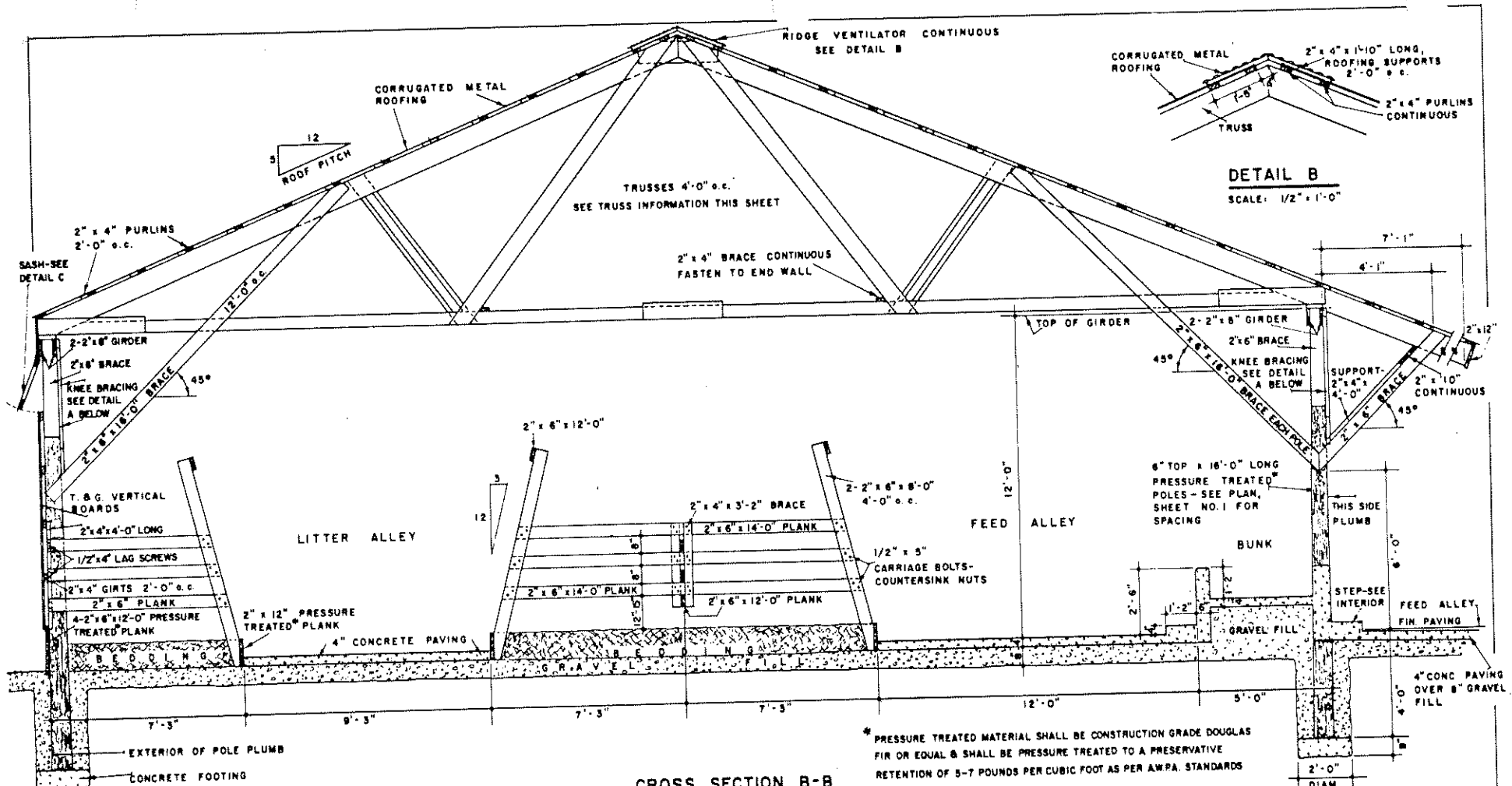


PERSPECTIVE

COOPERATIVE EXTENSION WORK IN
AGRICULTURE AND HOME ECONOMICS
DEPARTMENT OF AGRICULTURAL ENGINEERING
UNIVERSITY OF MARYLAND
AND
UNITED STATES DEPARTMENT OF AGRICULTURE COOPERATING

101 COW FREE-STALL SYSTEM

CONN. '65	EX. 5985	SHEET 1 OF 3
-----------	----------	--------------



CROSS SECTION B-B



* PRESSURE TREATED MATERIAL SHALL BE CONSTRUCTION GRADE DOUGLAS FIR OR EQUAL & SHALL BE PRESSURE TREATED TO A PRESERVATIVE RETENTION OF 5-7 POUNDS PER CUBIC FOOT AS PER A.W.P.A. STANDARDS

TRUSS INFORMATION

SITE FABRICATION: USE TRUSS PLAN 803M (AVAILABLE AT AGRICULTURAL ENGINEERING DEPARTMENT, UNIVERSITY OF CONNECTICUT).

SHOP FABRICATION: TRUSS DESIGN AND JOINT FASTENERS SHALL BE OF AN APPROVED DESIGN WITH THE FOLLOWING DESIGN LOADINGS:

ROOF LOAD (DEAD AND LIVE) = 35 LBS/SQ FT.

CEILING LOAD = NONE REQUIRED

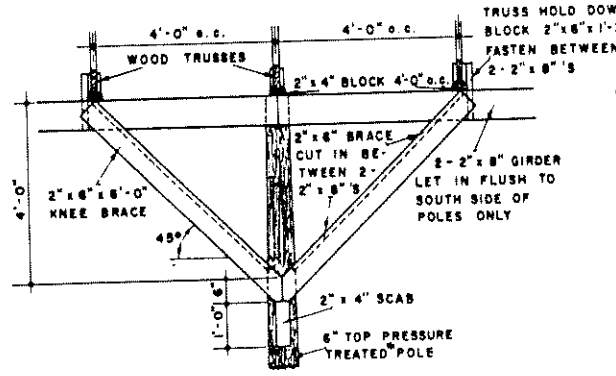
TRUSS SPACING = 4'-0" o.c.

OVERHANG = 7'-1" (ONE SIDE)

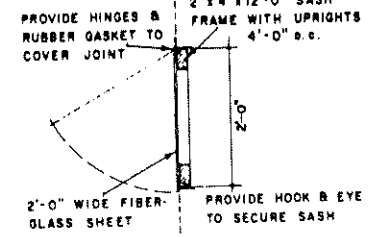
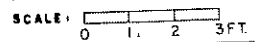
COOPERATIVE EXTENSION WORK IN AGRICULTURE AND HOME ECONOMICS
 DEPARTMENT OF AGRICULTURAL ENGINEERING
 UNIVERSITY OF MARYLAND
 AND
 STATE DEPARTMENT OF AGRICULTURE COOPERATING

101 COW FREE-STALL SYSTEM

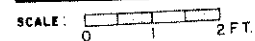
CONN. '65 EX. 5985 SHEET 2 OF 3

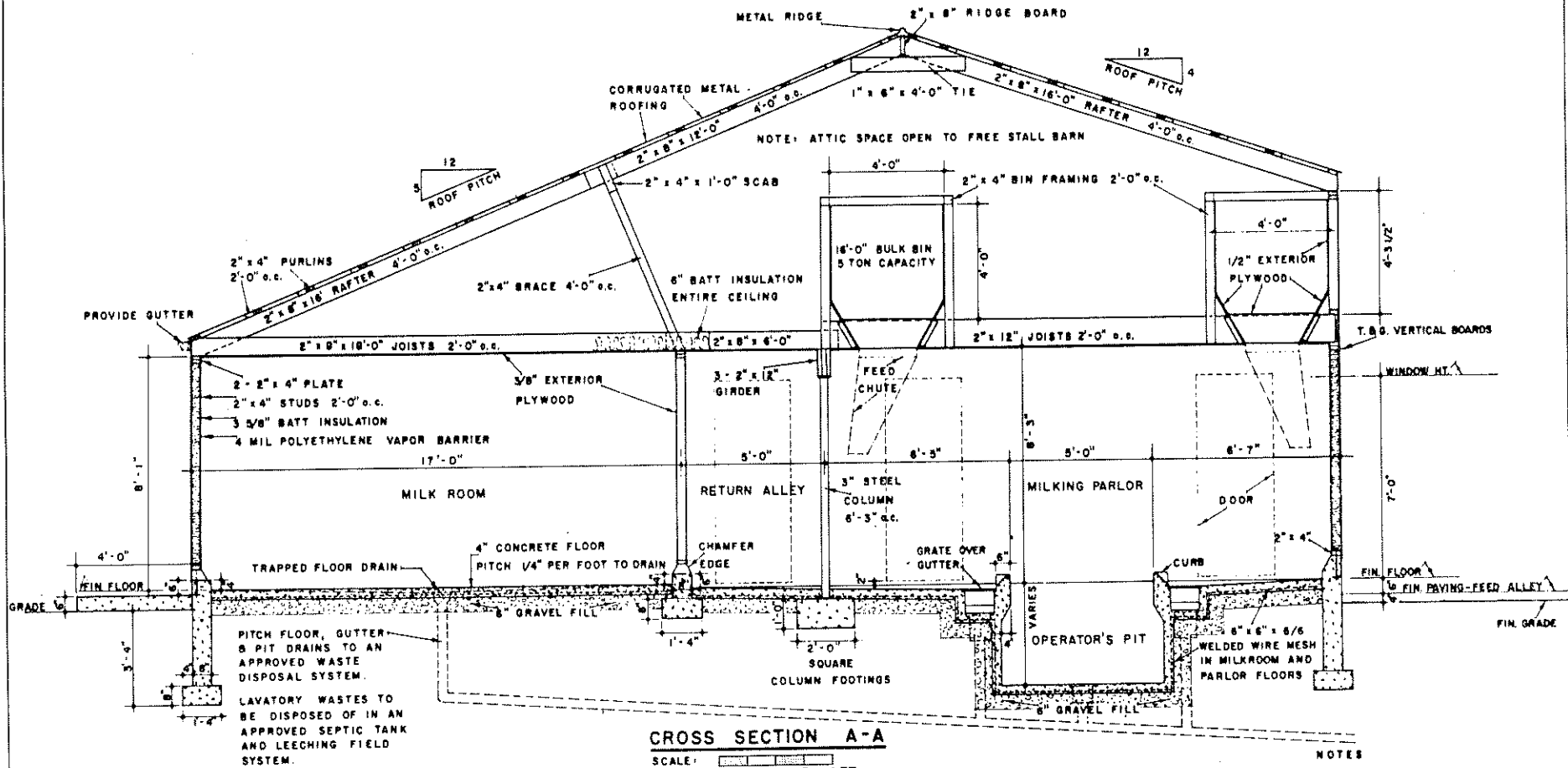


DETAIL A



DETAIL C





CROSS SECTION A-A

SCALE: 0 1 2 3 4 FT.

NOTES

MILK ROOM AND MILKING PARLOR

1. SEE MANUFACTURER'S SPECIFICATIONS FOR PARLOR DOORS, FEED CHUTES, GUTTERS, OPERATOR'S PIT AND STALL INSTALLATION.
2. PITCH FLOORS 1/4" PER FOOT TO DRAINS.
3. USE 1/2" x 12" BOLTS 6'-0" o.c. TO ANCHOR 2"x4" SILL TO FOUNDATION WALLS.
4. USE CORRUGATED RUBBER FILLER STRIPS AT THE EAVES UNDER CORRUGATED METAL ROOFING.

COOPERATIVE EXTENSION WORK IN
 AGRICULTURE AND HOME ECONOMICS
 DEPARTMENT OF AGRICULTURAL ENGINEERING
 UNIVERSITY OF MARYLAND

101 COW FREE-STALL SYSTEM

CONN. '65 EX 5985 SHEET 3 OF 3