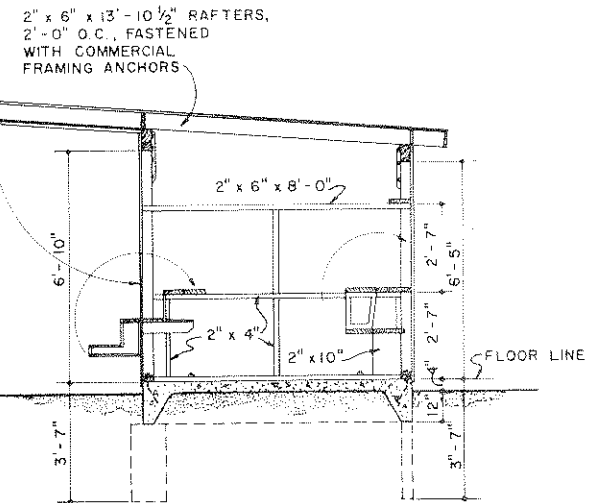
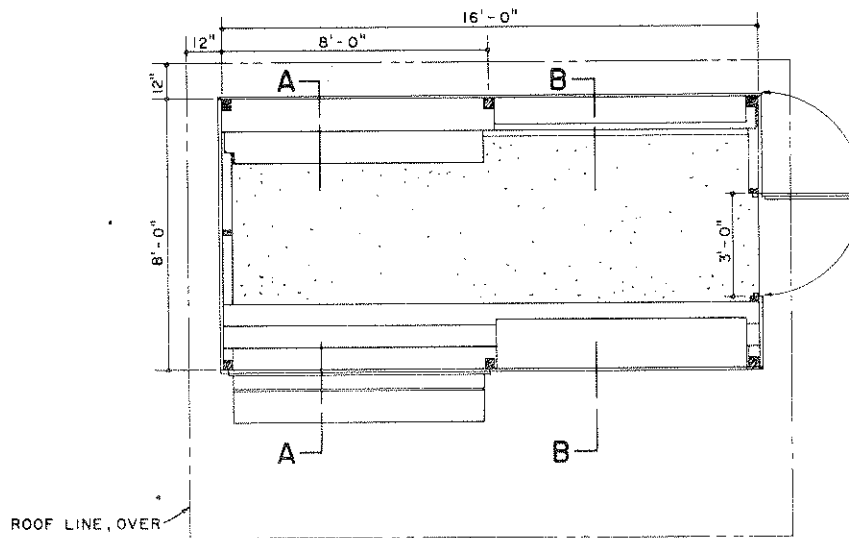


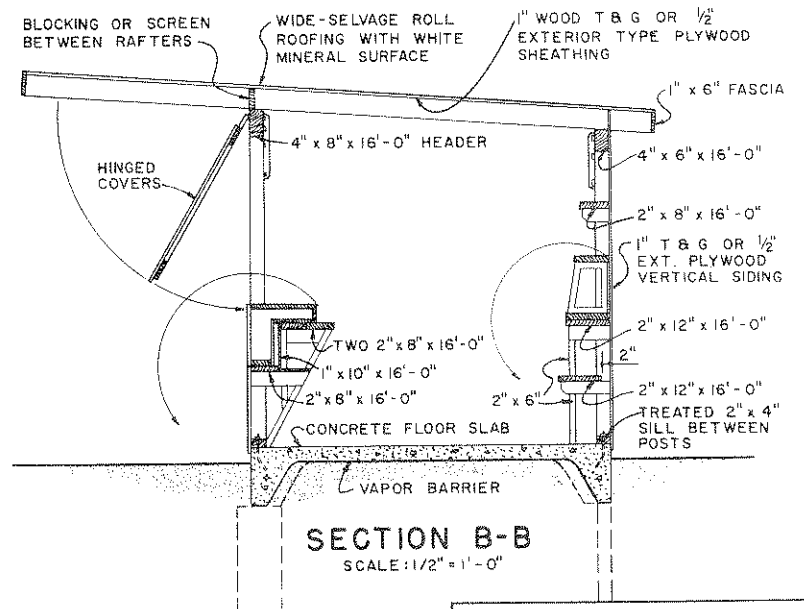
**FRONT ELEVATION**  
HINGED COVERS NOT SHOWN



**SECTION A-A**  
SHOWING END WALL FRAMING



**PLAN**



**SECTION B-B**  
SCALE: 1/2" = 1'-0"

ALL POSTS ARE 4" x 4" x 10'-0" PRESSURE-TREATED WITH A PRESERVATIVE TO A RETENTION OF 8 LBS. PER CUBIC FOOT.

USE OF PRESERVATIVES SUCH AS PENTACHLOROPHENOL OR COPPER-NAPHTHENATE WILL PERMIT THE POSTS TO BE PAINTED.

FRONT POSTS ARE SECURED TO THE 4" x 8" HEADER WITH 1/2" x 1/2" x 1/8" STEEL ANGLES 18" LONG AND FOUR 3/8" x 3" LAG SCREWS.

REAR POSTS ARE SECURED TO THE 4" x 6" WITH STEEL ANGLES 15" LONG AND THREE LAG SCREWS.

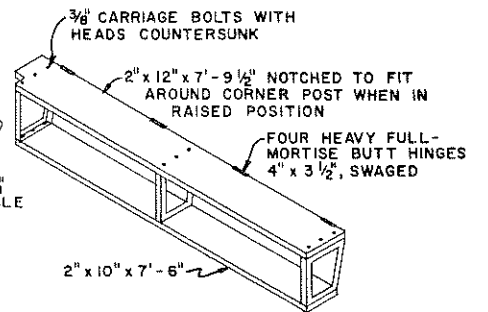
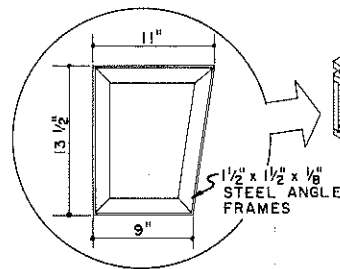
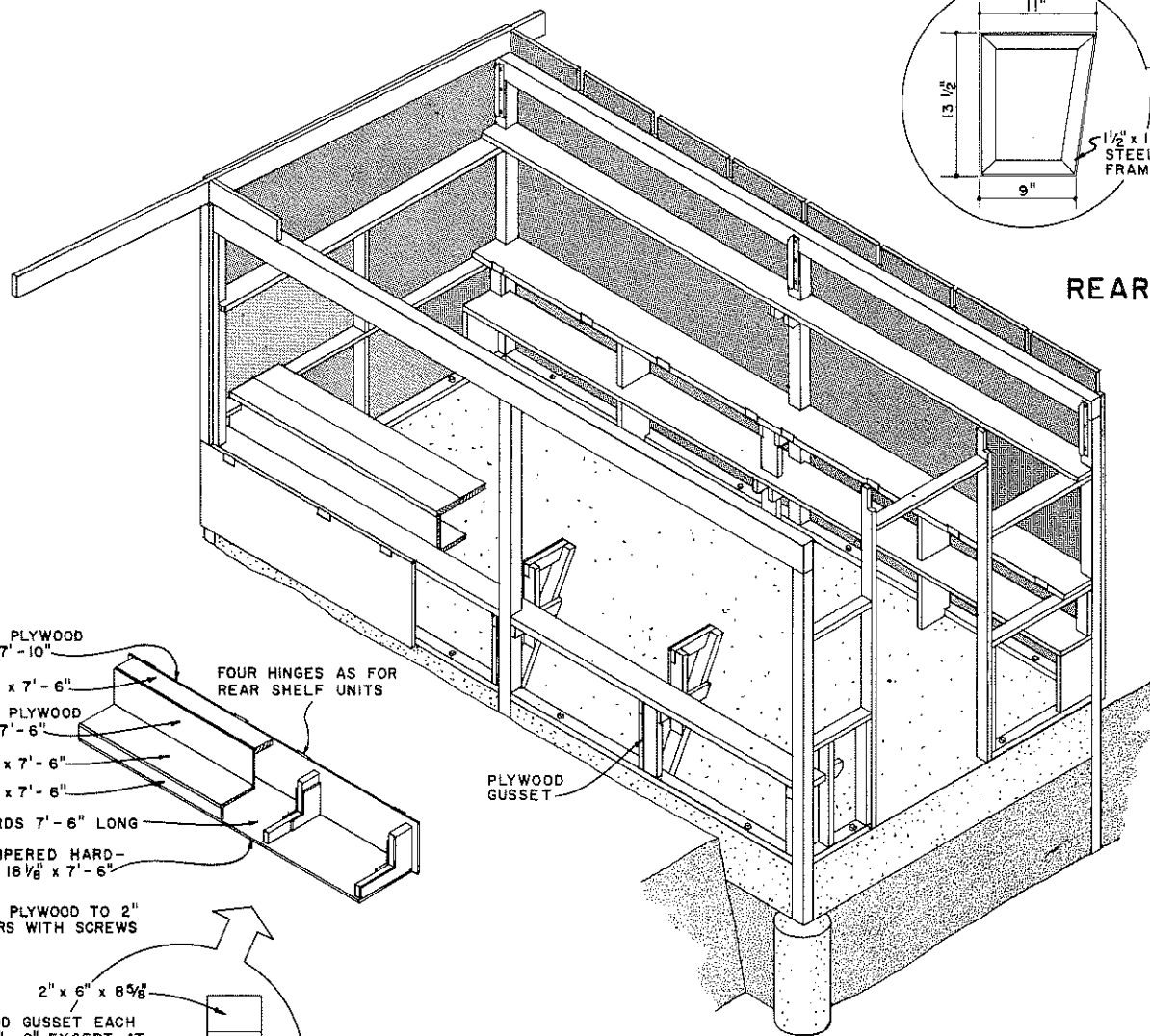
ANCHOR SILLS TO SLAB WITH TWO 1/2" BOLTS 5'-0" APART BETWEEN POSTS, EXCEPT FOR THE BOLT AT THE HINGE SIDE OF THE DOOR JAMB.

0 1 2 3 4 FT. EXCEPT AS NOTED

COOPERATIVE EXTENSION WORK IN  
 AGRICULTURE AND HOME ECONOMICS  
 DEPARTMENT OF AGRICULTURAL ENGINEERING  
 UNIVERSITY OF MARYLAND  
 AND  
 UNITED STATES DEPARTMENT OF AGRICULTURE COOPERATING

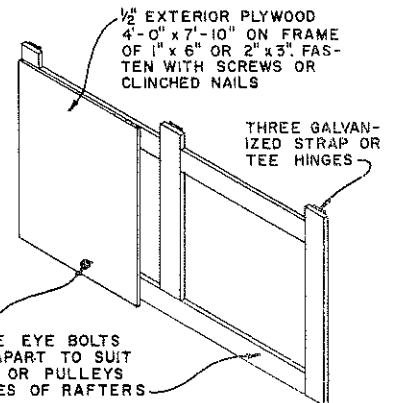
**ROADSIDE STAND**  
 8'-0" x 16'-0"

USDA '65 EX. 5983 SHEET 1 OF 2



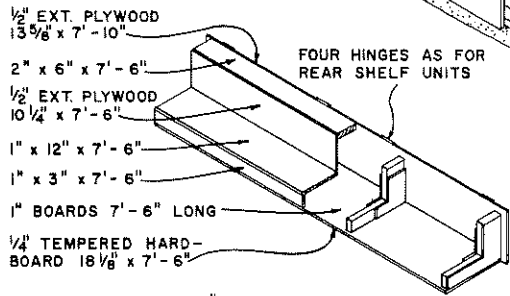
**REAR HINGED SHELF UNIT**

TWO REQUIRED



**HINGED COVER**

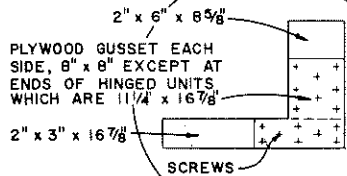
TWO REQUIRED



FOUR HINGES AS FOR REAR SHELF UNITS

PLYWOOD GUSSET

FASTEN PLYWOOD TO 2" MEMBERS WITH SCREWS



**VIEW SHOWING CONSTRUCTION**

CUT AWAY FOR CLARITY

**COUNTER-DISPLAY UNIT**

TWO REQUIRED

COOPERATIVE EXTENSION WORK IN  
 AGRICULTURE AND HOME ECONOMICS  
 DEPARTMENT OF AGRICULTURAL ENGINEERING  
 UNIVERSITY OF MARYLAND  
 AND  
 UNITED STATES DEPARTMENT OF AGRICULTURE COOPERATING

**ROADSIDE STAND**  
 8'-0" x 16'-0"

USDA '65 EX 5983 SHEET 2 OF 2