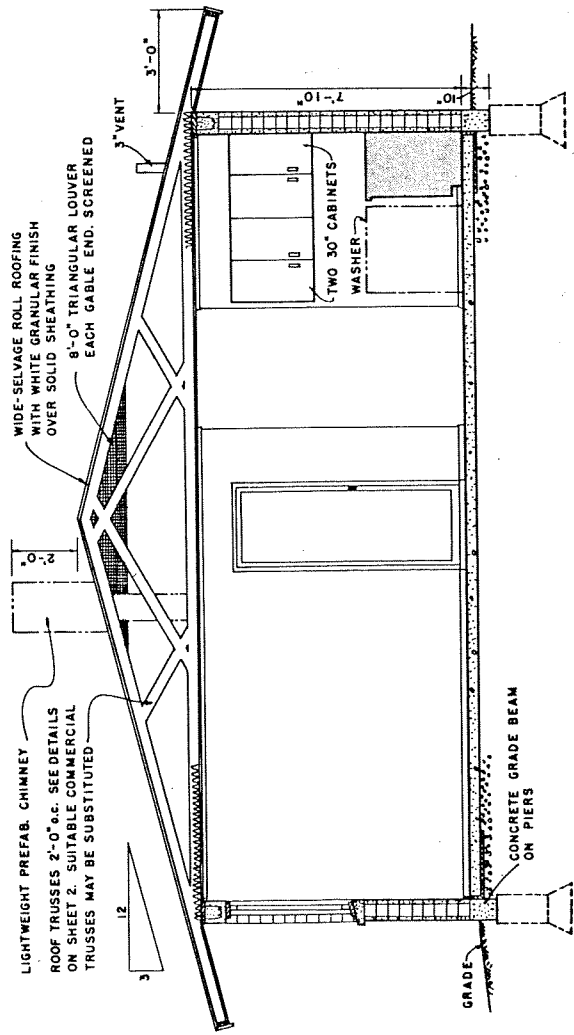


PERSPECTIVE



LIGHTWEIGHT PREFAB. CHIMNEY
ROOF TRUSSES 2'-0" o.c. SEE DETAILS
ON SHEET 2. SUITABLE COMMERCIAL
TRUSSES MAY BE SUBSTITUTED

WIDE-SERVAGE ROLL ROOFING
WITH WHITE GRANULAR FINISH
OVER SOLID SHEATHING

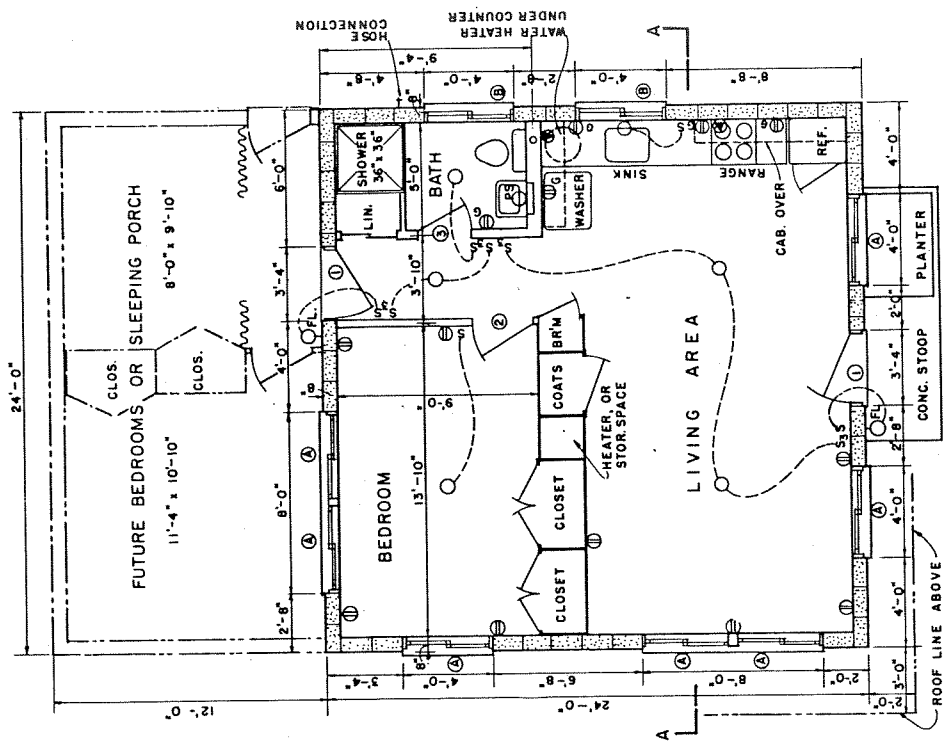
8'-0" TRIANGULAR LOUVER
EACH GABLE END. SCREENED

CONCRETE GRADE BEAM
ON PIERS

SECTION A-A
SCALE 0 1 2 3 4 FT.

FOR ECONOMY AND EASE OF CONSTRUCTION, APPLY THE
INTERIOR WALL, CEILING AND FLOOR FINISH BEFORE
ERECTING ANY PARTITIONS. THIS WILL ALSO PERMIT
FUTURE REMOVAL OR MOVING OF ANY PARTITIONS
EXCEPT THOSE WHICH CONTAIN PLUMBING.

THE FINISH GRADE SHOULD SLOPE AWAY
FROM THE CABIN ON ALL SIDES.
SEE DETAILS ON SHEET 2 FOR ALTERNATE
FOUNDATION DETAILS.



PLAN
SCALE 0 2 4 6 FT.

ROUGH SCHEDULE (OPENINGS)

①	4'-0" WIDE X 4'-0" HIGH
②	4'-0" " X 2'-8" "

DOOR SCHEDULE

①	3'-0" X 6'-8" EXTERIOR
②	2'-8" X 6'-8" INTERIOR
③	2'-6" X 6'-8" "

PACKAGED SLIDING WINDOWS
TYPE AND TRIM TO BE AS
SELECTED BY OWNER.

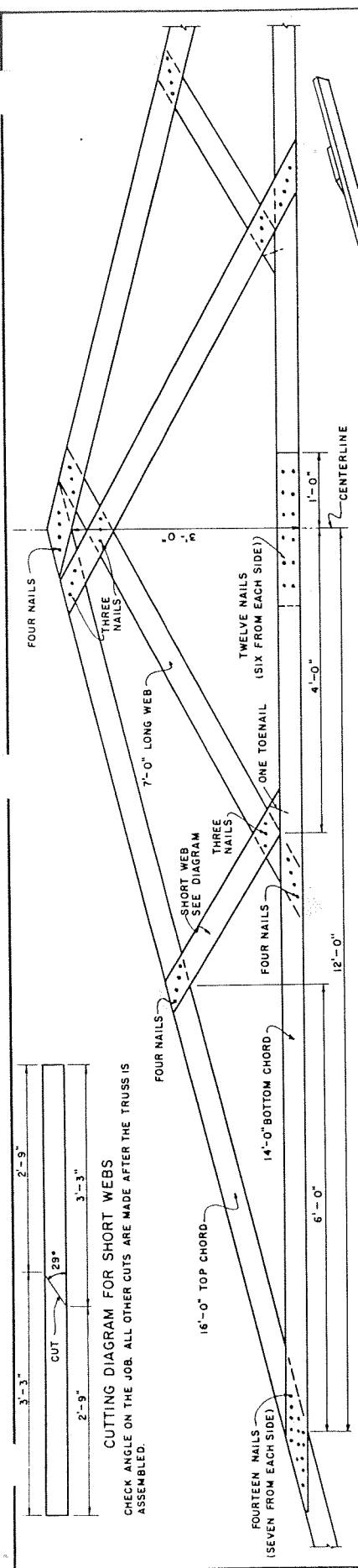
ELECTRICAL SYMBOLS

- 5 SWITCH
- 5s THREE-WAY SWITCH
- CEILING FIXTURE, RECESSED
- ps WALL FIXTURE, PULL SWITCH
- FL FLOODLIGHT
- D Duplex Convenience Outlet
- Dg Dup. Cony. Outlet with Ground
- 230 VOLT, RANGE & WATER HEATER

COOPERATIVE EXTENSION WORK IN
AGRICULTURE AND HOME ECONOMICS
DEPARTMENT OF AGRICULTURAL ENGINEERING
UNIVERSITY OF MARYLAND
UNITED STATES DEPARTMENT OF AGRICULTURE COOPERATING

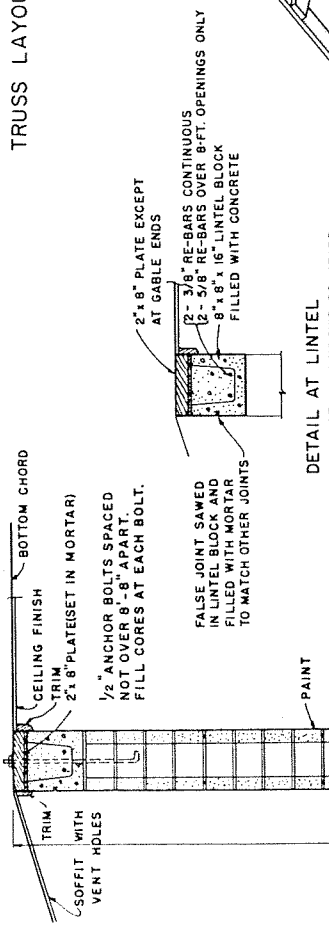
CABIN

PCA '64 EX-5968 SHEET 1 OF 3



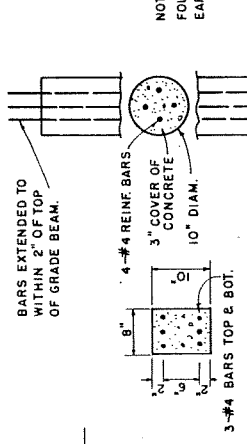
TRUSS LAYOUT & FASTENING DETAILS

THIS TRUSS IS DESIGNED TO SUPPORT LOADS UP TO 70 LBS. PER FOOT OF SPAN, INCLUDING THE WEIGHT OF THE ROOF.
 ALL LUMBER SHALL BE STRESS GRADED TO PROVIDE 1500 PSI FIBER STRESS IN BENDING, AND 1350 PSI IN COMPRESSION.
 MATERIALS FOR ONE TRUSS
 TOP CHORD.....2 PGS 2" x 4" x 16'-0"
 BOTTOM CHORD...2 " 2" x 4" x 14'-0"
 LONG WEBS.....1 " 2" x 4" x 14'-0"
 SHORT WEBS.....1 " 2" x 4" x 6'-0"
 NAILS.....2 1/2 LB. 20d COMMON
 ALL PROJECTING NAILS ARE TO BE CLINCHED.
 TRUSSES SHOULD BE SECURELY FASTENED TO THE SUPPORTING STRUCTURE WITH COMMERCIAL FRAMING ANCHORS.



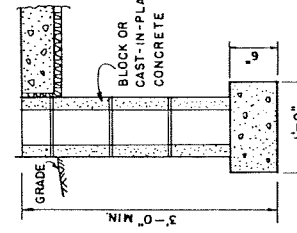
DETAIL AT LINTEL
 NOTE: INSTALL WINDOWS SO HEADS ARE SAME HEIGHT FROM FLOOR AS HEADS OF DOORS.

VIEW OF COMPLETED TRUSS
 (NO SCALE)

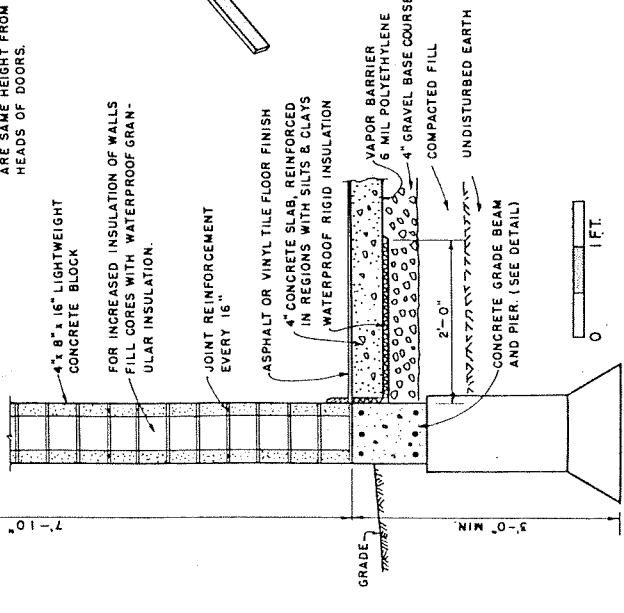


SECTION THRU GRADE BEAM
 SCALE 3/4" = 1'-0"

TYPICAL PIER DETAIL
 SCALE 3/4" = 1'-0"
 NOTE: GRADE BEAM TO EXTEND AROUND PERIMETER OF CABIN.



CONCRETE MASONRY FOUNDATION



TYPICAL WALL CONSTRUCTION

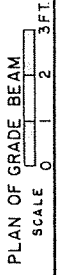
NOTE:
 FOUNDATIONS SHOULD EXTEND TO FIRM EARTH AND BELOW FROST LINE.

SCALE: 1/2" = 1'-0" EXCEPT AS NOTED.

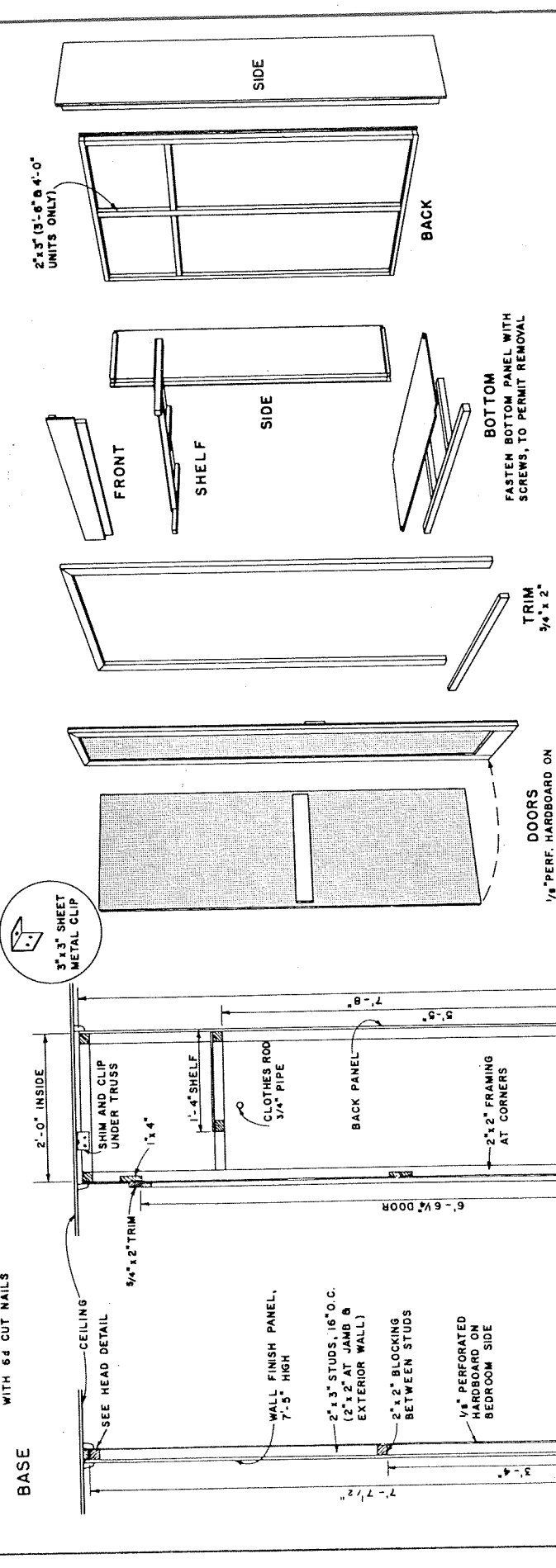
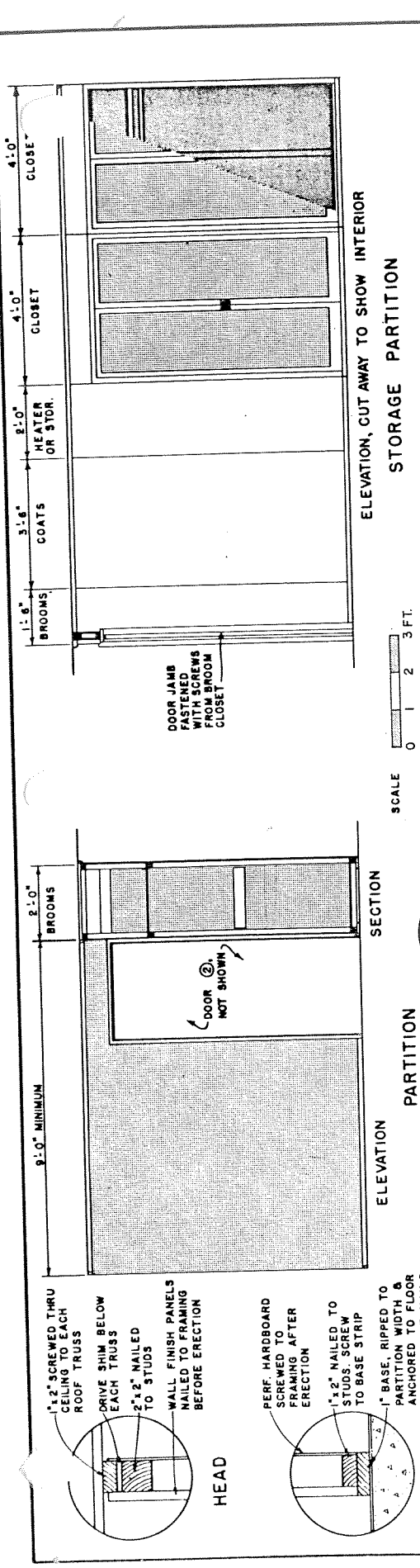
COOPERATIVE EXTENSION WORK IN
 AGRICULTURE AND HOME ECONOMICS
 DEPARTMENT OF AGRICULTURAL ENGINEERING
 UNIVERSITY OF MARYLAND
 AND
 UNITED STATES DEPARTMENT OF AGRICULTURE COOPERATING

CABIN

PCA '64 EX-5968 SHEET 2 OF 3



PLAN OF GRADE BEAM
 SCALE 0 1 2 3 FT.



TYPICAL CROSS SECTIONS

SCALE: 0 1 FT.

HEAD

1" x 2" SCREWED THRU CEILING TO EACH ROOF TRUSS

DRIVE SHIM BELOW EACH TRUSS

2" x 2" NAILED TO STUDS

WALL FINISH PANELS NAILED TO FRAMING BEFORE ERECTION

BASE

1" x 2" NAILED TO STUDS. SCREW TO BASE STRIP

PERF. HARDBOARD SCREWED TO FRAMING AFTER ERECTION

1" BASE, RIPPED TO PARTITION WIDTH & ANCHORED TO FLOOR WITH 6d CUT NAILS

PARTITION

SEE HEAD DETAIL

WALL FINISH PANEL, 7'-5" HIGH

2" x 3" STUDS, 16" O.C. (2" x 2" AT JAMB & EXTERIOR WALL)

2" x 2" BLOCKING BETWEEN STUDS

1/8" PERFORATED HARDBOARD ON BEDROOM SIDE

SEE BASE DETAIL

FLOOR TILE

STORAGE PARTITION

1" x 4" BASE

EXPLODED VIEW OF TYPICAL CLOSET UNIT

SHOWING COMPONENTS READY FOR ASSEMBLY

CLOSET DOORS SHOULD HAVE MAGNETIC LATCHES AT TOP AND BOTTOM.

PERFORATED HARDBOARD IS USED ON CLOSET DOORS FOR VENTILATION AND ON THE OTHER PARTITION FOR TEXTURE AND TO PERMIT HANGING LIGHT SHELVES, ETC., ON COMMERCIAL BRACKETS.

CONSTRUCTION OF HEATER ENCLOSURE WILL DEPEND ON THE TYPE OF HEATING UNIT TO BE INSTALLED.

THESE BEDROOM PARTITIONS ARE DESIGNED TO PERMIT FUTURE REARRANGEMENT OR REMOVAL.

THE STORAGE PARTITION IS MADE UP OF INDIVIDUAL CLOSET UNITS WHICH ARE SUPPORTED ON CONTINUOUS 1" x 4" BOARDS WHICH SERVE TO PROTECT THE FINISH FLOOR TILE. JOINTS AT THE FLOOR AND CEILING ARE COVERED BY TRIM. USE OF VERTICALLY GROOVED PLYWOOD OR HARDBOARD PANELS WILL AID IN CONCEALING THE JOINTS BETWEEN UNITS.

ALL FRAMING IS 2" x 2" EXCEPT AS NOTED.