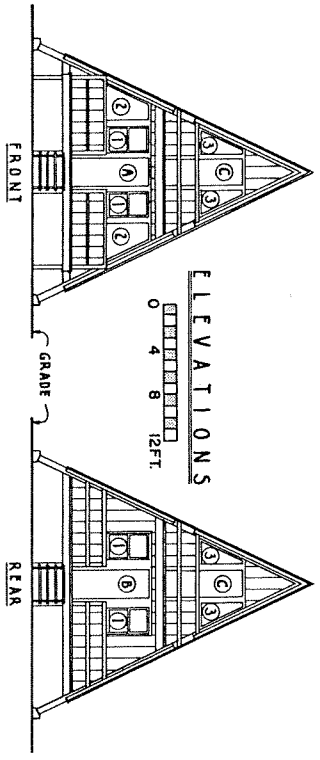
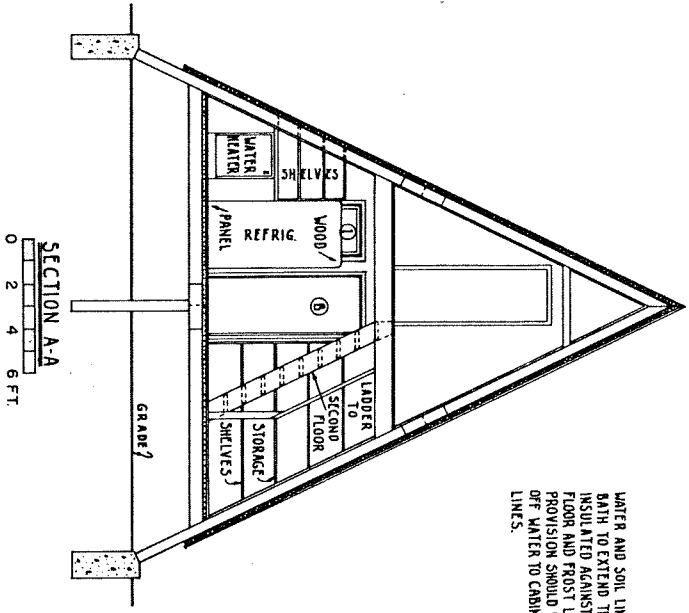
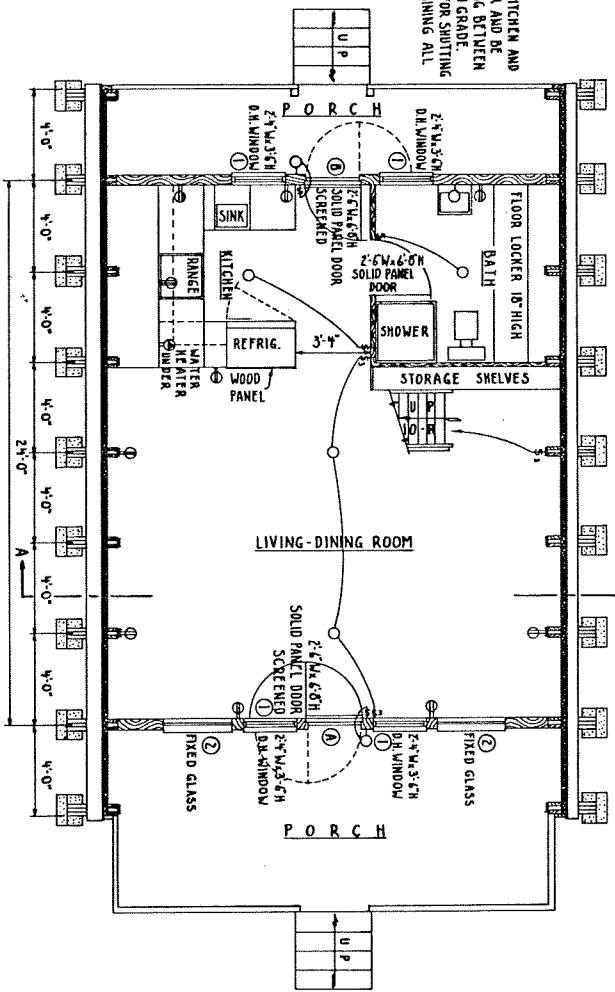
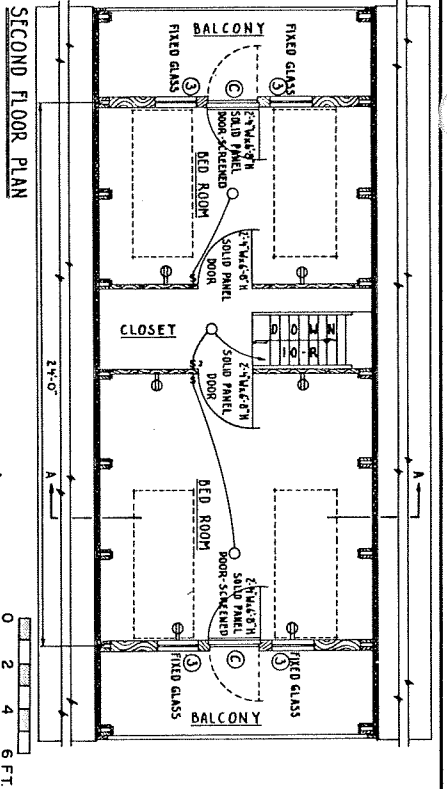


REAR WALL AT SECOND FLOOR MAY BE CONSTRUCTED AT END SET OF RAFTERS THEREBY INCREASING LENGTH OF BEDROOM. IF THIS IS DONE SUBSTITUTE A DOUBLE HING WINDOW FOR DOOR.

WATER AND SOIL LINES FOR KITCHEN AND BATH TO EXTEND THRU FLOOR AND BE INSULATED AGAINST FREEZING BETWEEN FLOOR AND FROST LINE BELOW GRADE. PROVISION SHOULD BE MADE FOR SHOOTING OFF WATER TO CANNIN AND DRAINING ALL LINES.

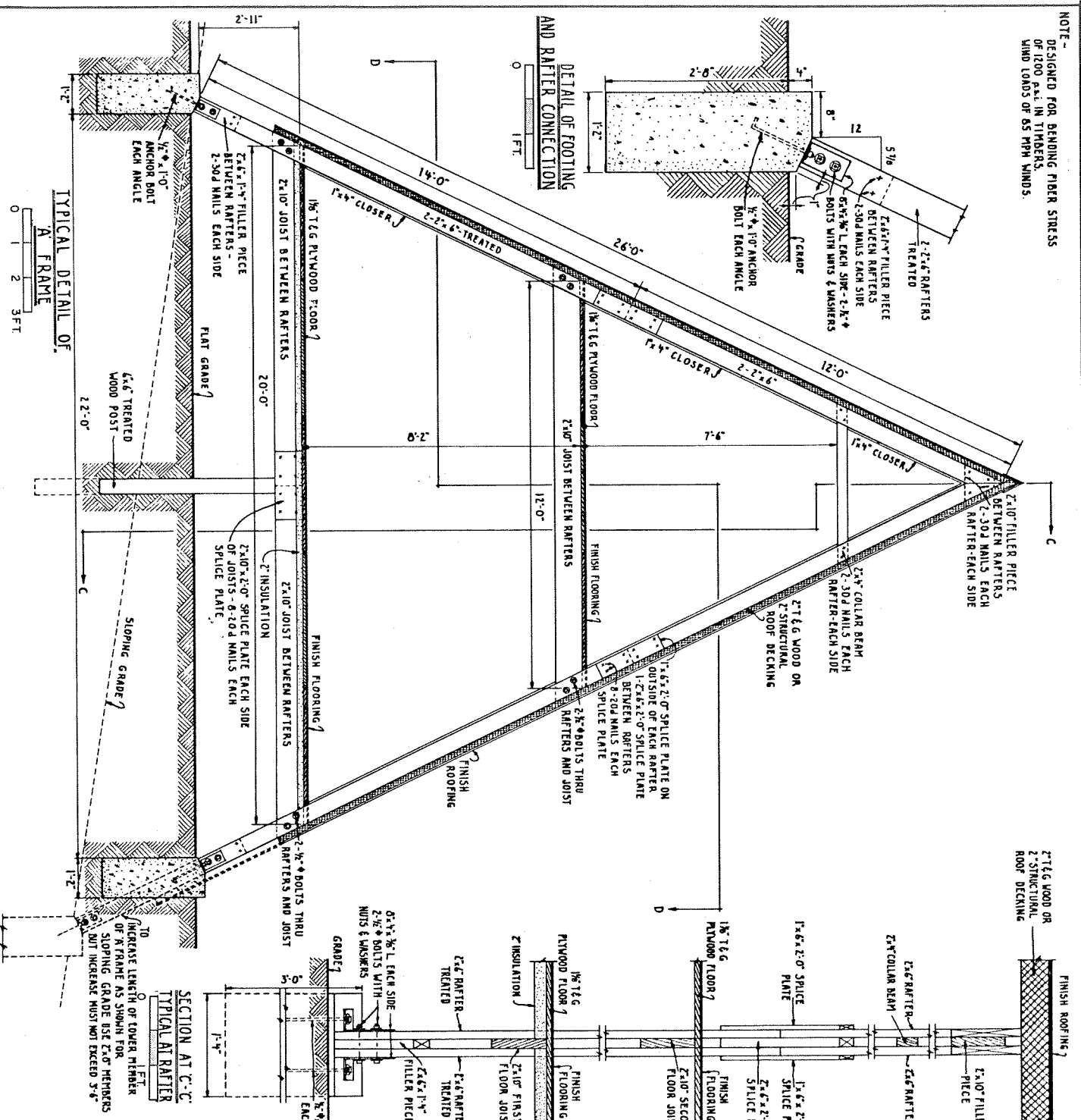


COOPERATIVE EXTENSION WORK IN
 AGRICULTURE AND HOME ECONOMICS
 DEPARTMENT OF AGRICULTURAL ENGINEERING
 UNIVERSITY OF MARYLAND
 AND
 UNITED STATES DEPARTMENT OF AGRICULTURE COOPERATIVE

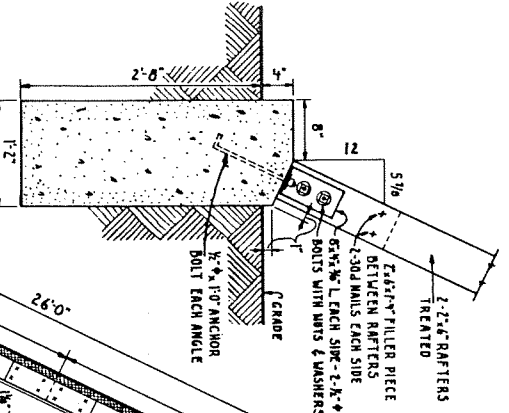
24'-0" X FRAME CABIN

USDA 1943 EX. 5964 SHEET 1 OF 3

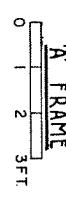
NOTE -
DESIGNED FOR BENDING FIBER STRESS
OF 1200 P.S.I. IN TIMBERS.
WIND LOADS OF 85 MPH WINDS.



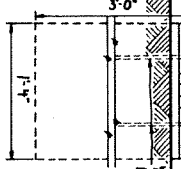
DETAIL OF FOOTING
AND RAFTER CONNECTION



TYPICAL DETAIL OF
A FRAME

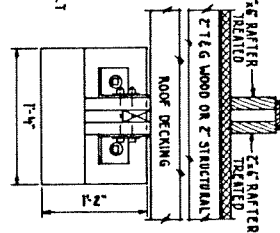


SECTION AT C-C



INCREASE LENGTH OF TOWER MEMBER
OF A FRAME AS SHOWN FOR
SLOPING GRADE USE 2x6 MEMBERS
DUT INCREASE MUST NOT EXCEED 3'-6"

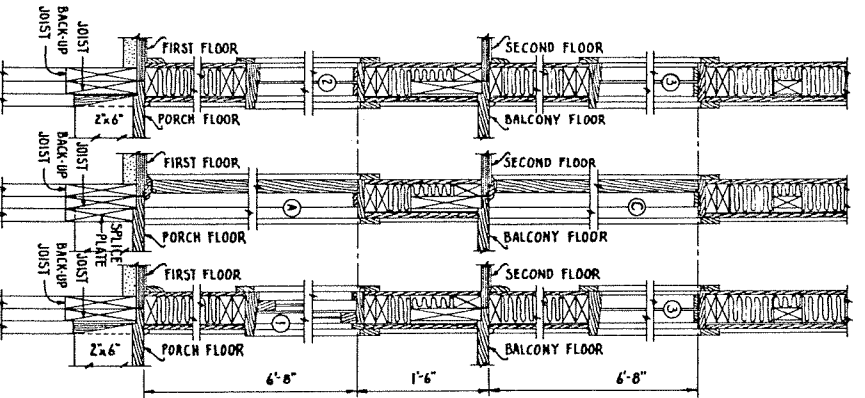
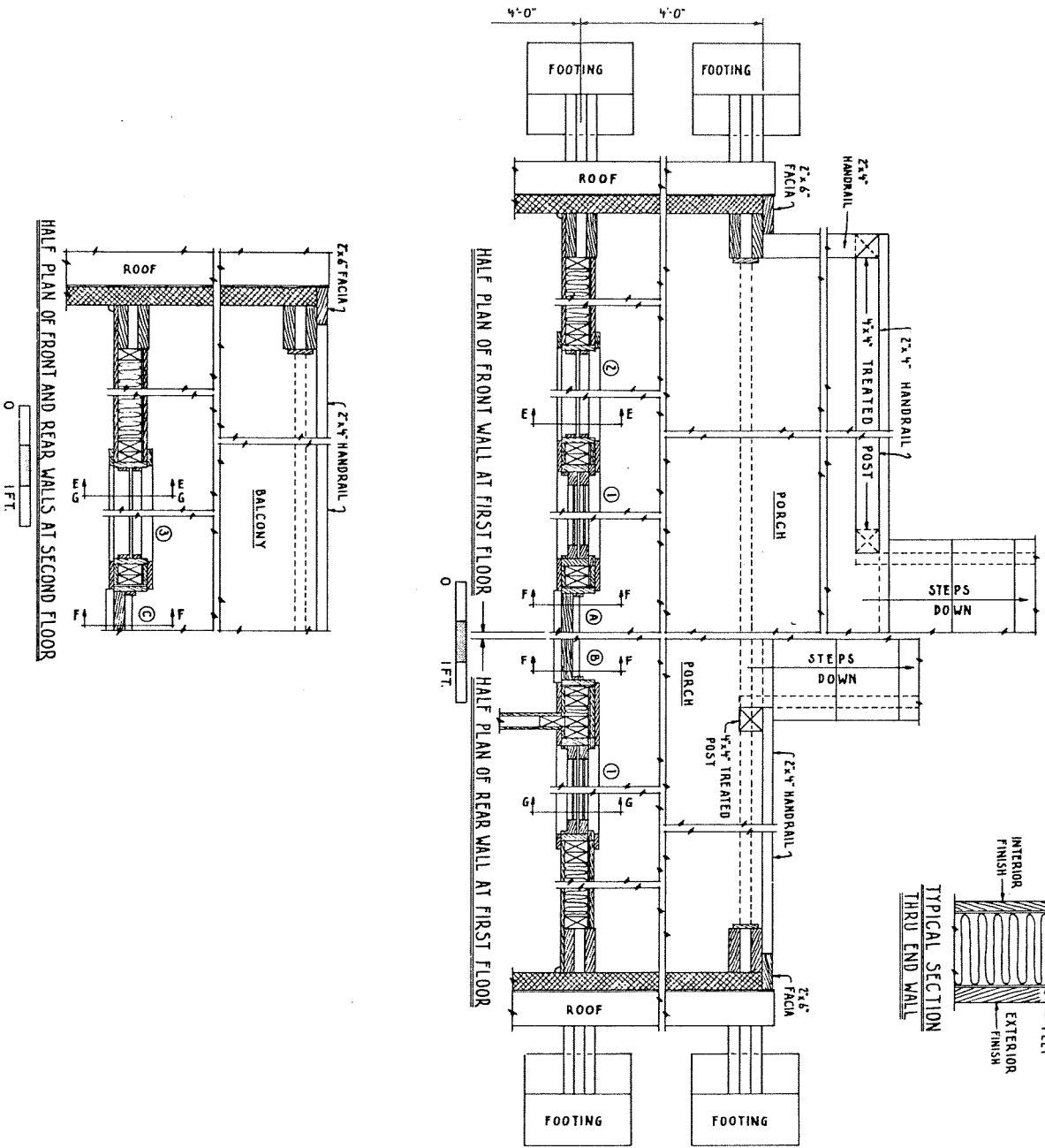
PLAN AT D-D
TYPICAL AT RAFTER



COOPERATIVE EXTENSION WORK IN
AGRICULTURE AND HOME ECONOMICS
DEPARTMENT OF AGRICULTURAL ENGINEERING
UNIVERSITY OF MARYLAND
UNITED STATES DEPARTMENT OF AGRICULTURE
WASHINGTON, D. C.

24'-0" A FRAME CABIN

USDA 1963 EX-5964 SHEET 2 OF 3



COOPERATIVE EXTENSION WORK IN
 AGRICULTURE AND HOME ECONOMICS
 DEPARTMENT OF AGRICULTURAL ENGINEERING
 UNIVERSITY OF MARYLAND
 AND
 UNITED STATES DEPARTMENT OF AGRICULTURE COOPERATING

24'-0" X FRAME CABIN

USDA 1983 EX-5964 SHEET 3 OF 3