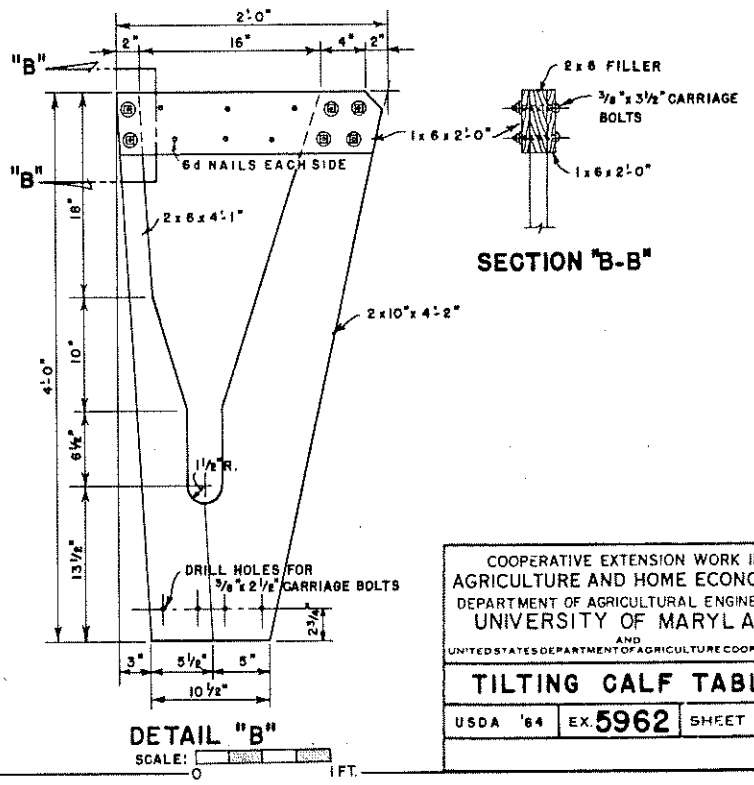
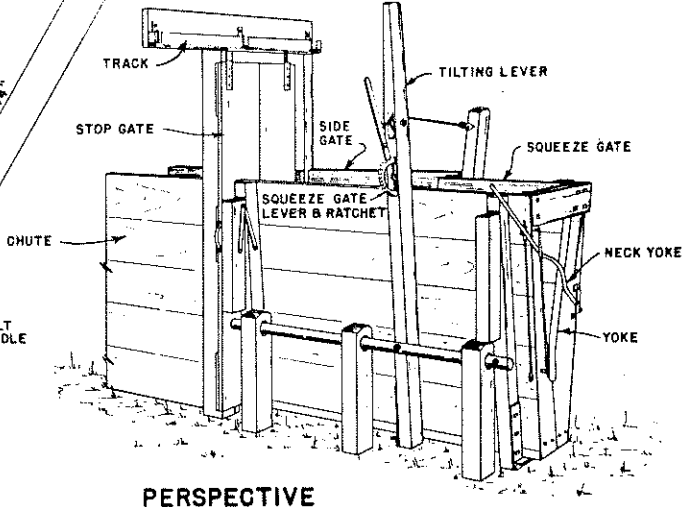
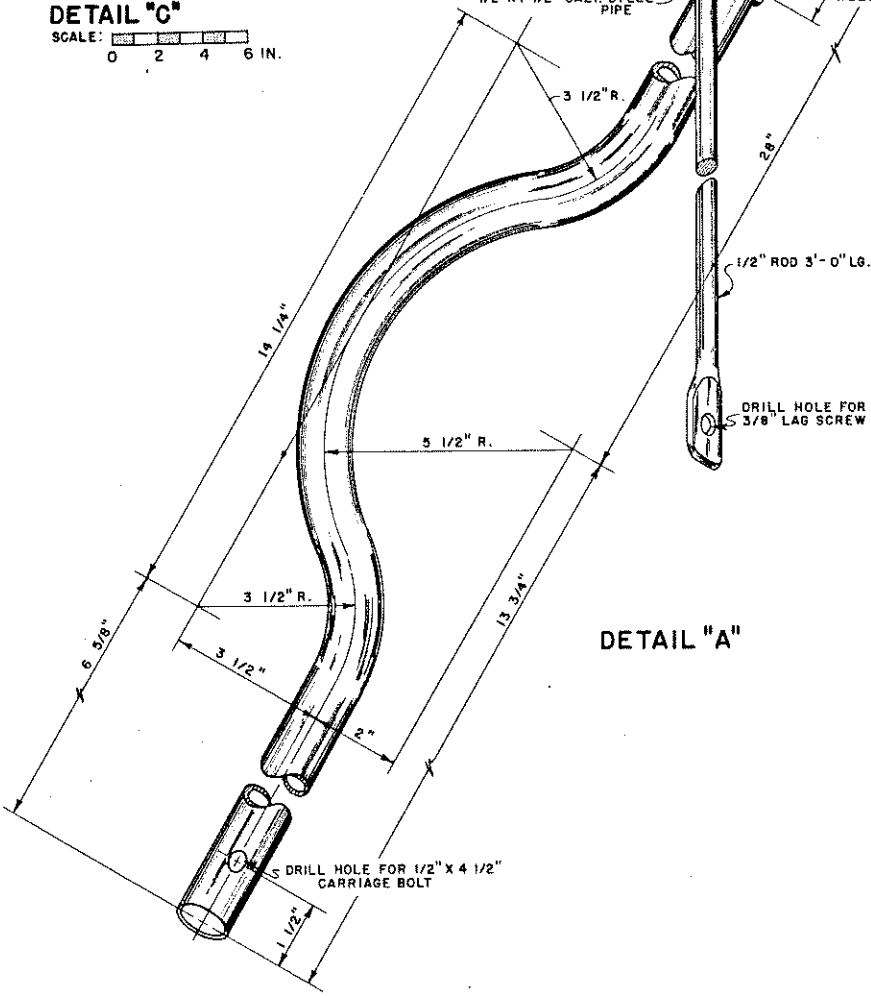


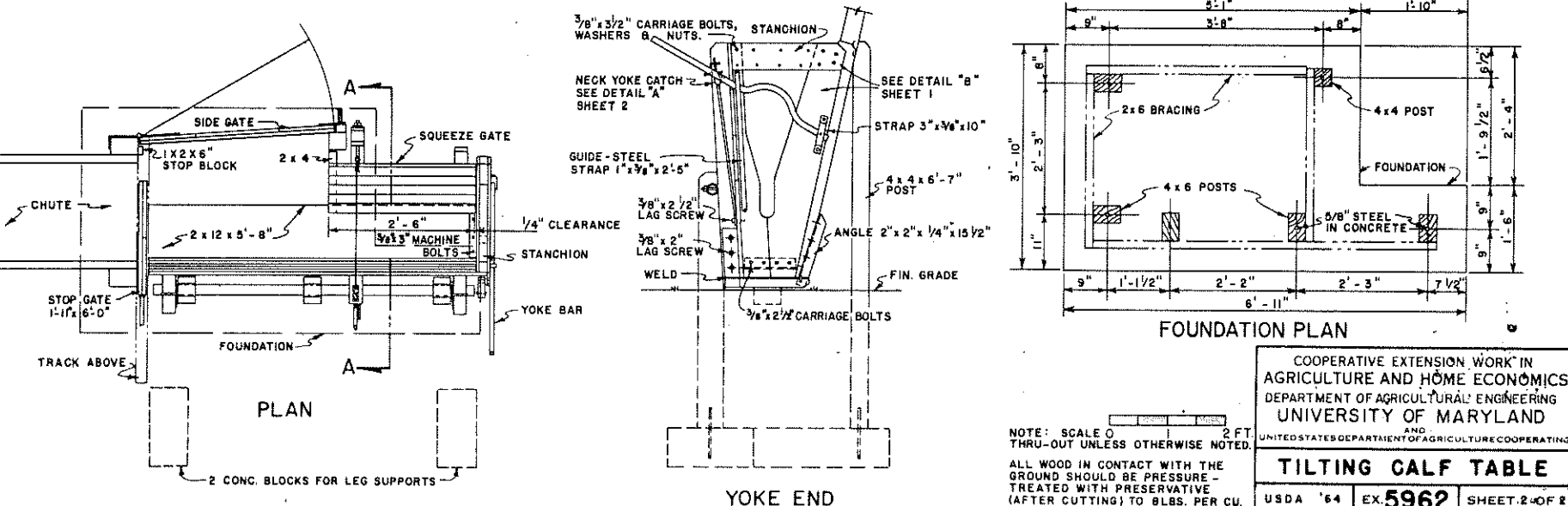
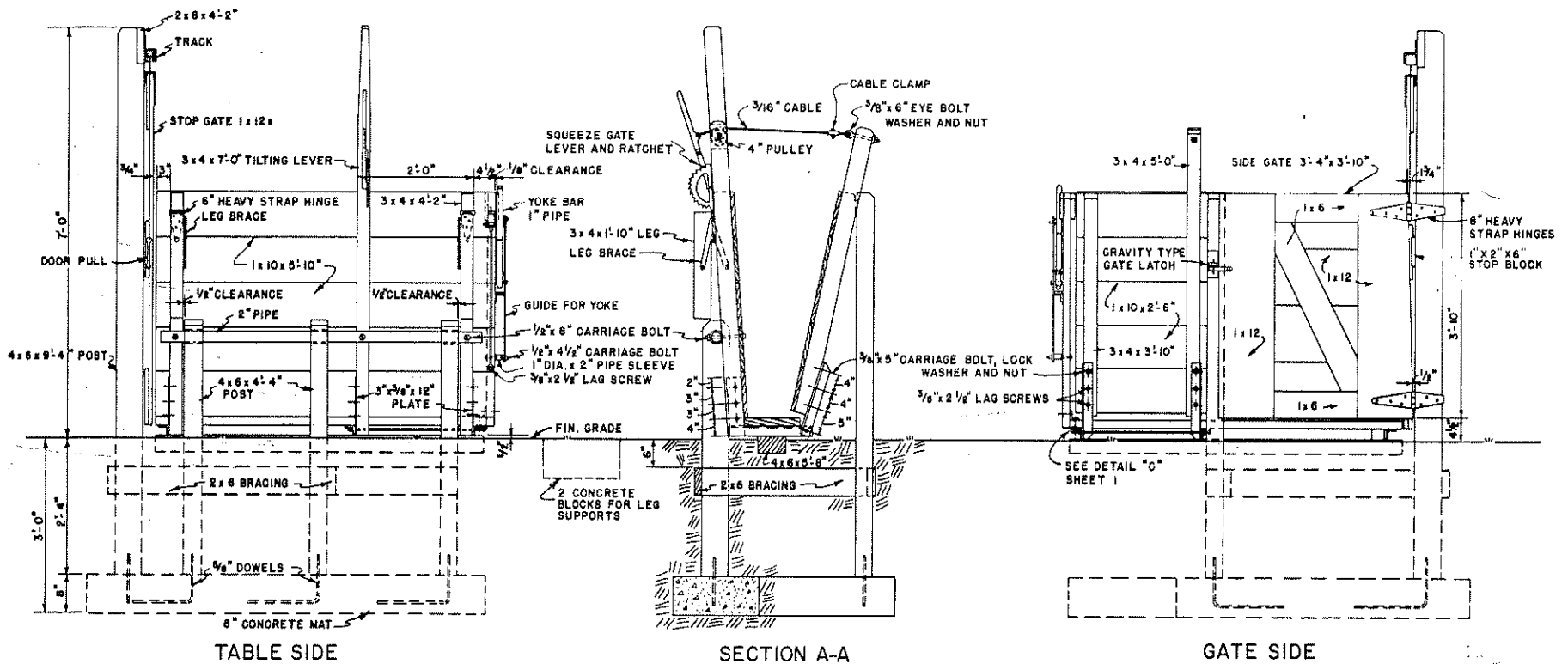
DETAIL "C"
SCALE: 0 2 4 6 IN.



COOPERATIVE EXTENSION WORK IN
AGRICULTURE AND HOME ECONOMICS
DEPARTMENT OF AGRICULTURAL ENGINEERING
UNIVERSITY OF MARYLAND
AND
UNITED STATES DEPARTMENT OF AGRICULTURE COOPERATING

TILTING CALF TABLE

USDA '64 EX. 5962 SHEET 1 OF 2



NOTE: SCALE 1" = 2 FT. THRU-OUT UNLESS OTHERWISE NOTED.

ALL WOOD IN CONTACT WITH THE GROUND SHOULD BE PRESURE-TREATED WITH PRESERVATIVE (AFTER CUTTING) TO 8 LBS. PER CU. FT. RETENTION.

BASED ON MONT. PLAN C-201

COOPERATIVE EXTENSION WORK IN AGRICULTURE AND HOME ECONOMICS
DEPARTMENT OF AGRICULTURAL ENGINEERING
UNIVERSITY OF MARYLAND
AND UNITED STATES DEPARTMENT OF AGRICULTURE COOPERATING

TILTING CALF TABLE

USDA '64 EX. 5962 SHEET 2 OF 2