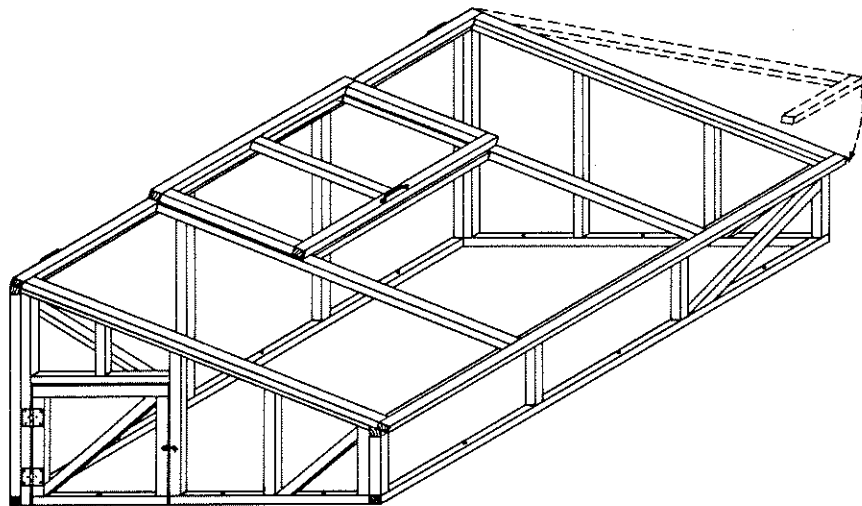
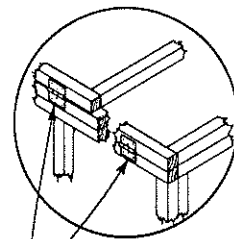
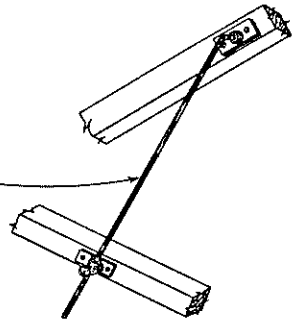
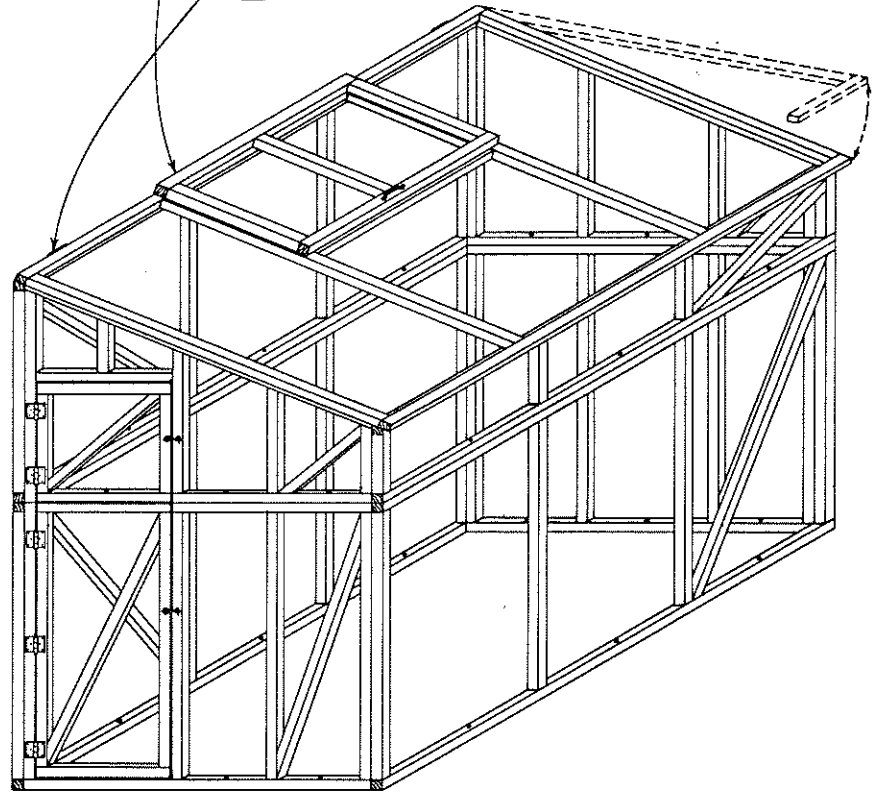


VENT OPEN



COLDFRAME UNIT

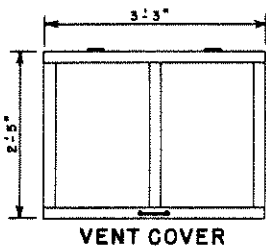
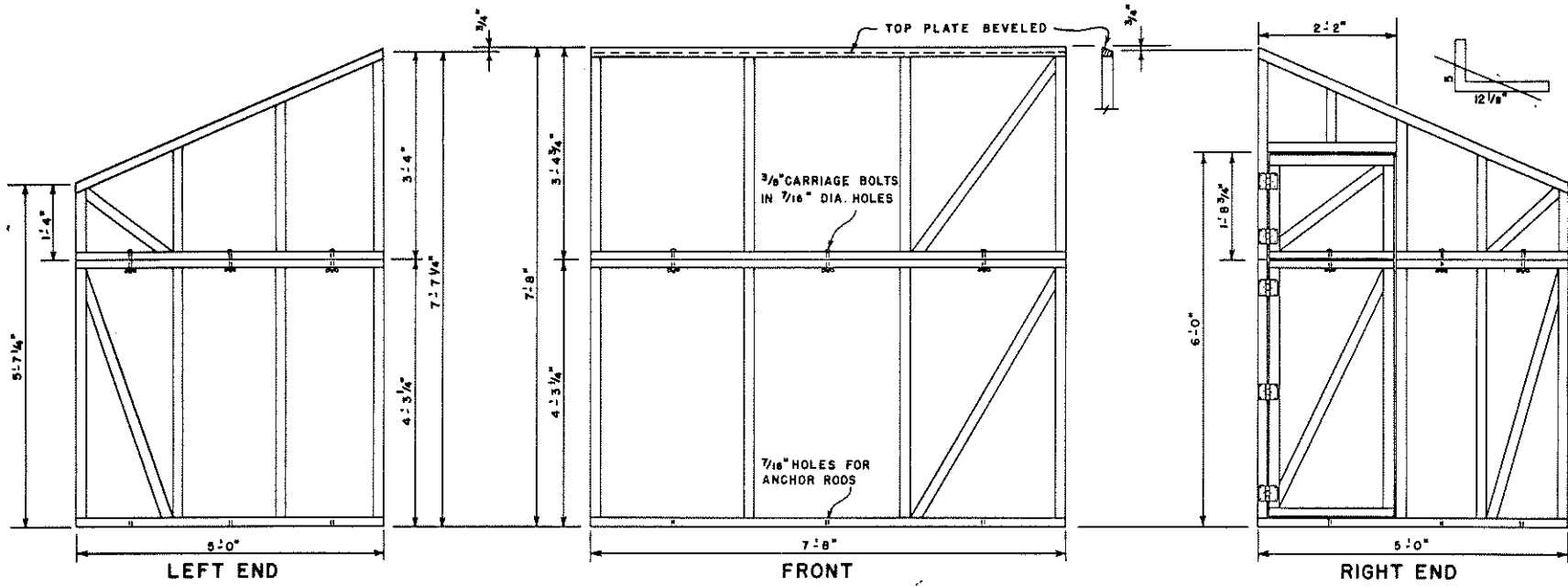


GREENHOUSE ASSEMBLY

COOPERATIVE EXTENSION WORK IN
 AGRICULTURE AND HOME ECONOMICS
 DEPARTMENT OF AGRICULTURAL ENGINEERING
 UNIVERSITY OF MARYLAND
 AND
 UNITED STATES DEPARTMENT OF AGRICULTURE COOPERATING

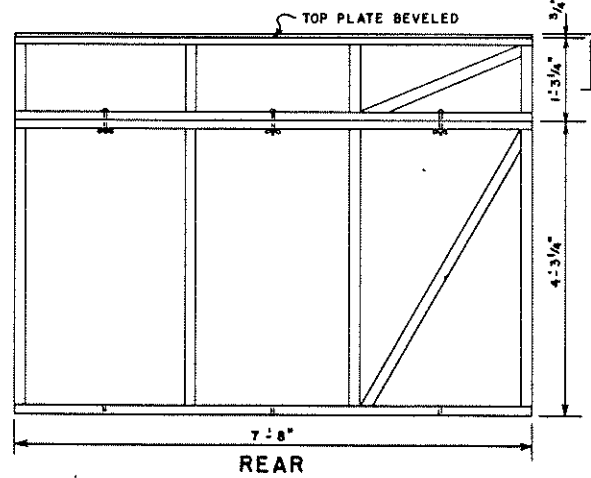
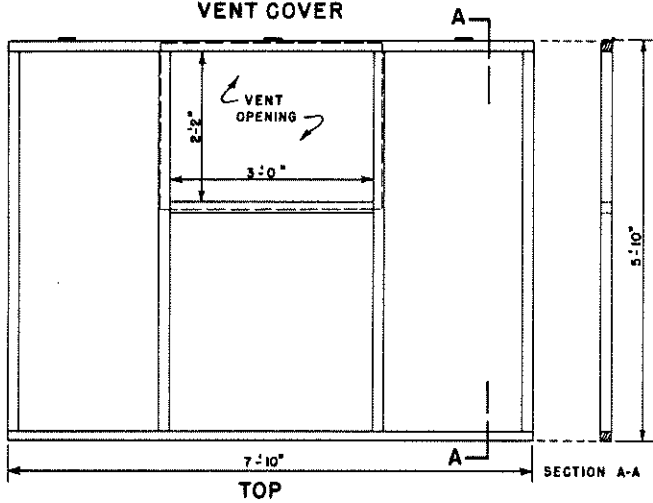
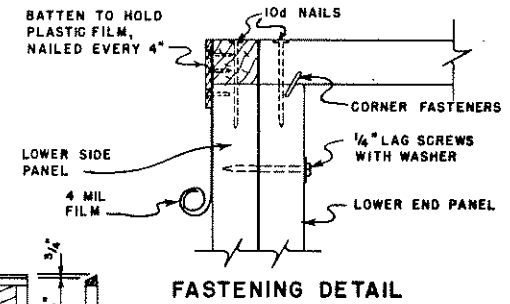
PLASTIC COVERED
GREENHOUSE - COLDFRAME

ORE. '62 EX 5941 SHEET 1 OF 2



PANEL FRAMING DETAILS

ALL FRAMING MEMBERS ARE 2"x2", TREATED WITH PRESERVATIVE AFTER CUTTING.
CHECK ALL DIMENSIONS ON THE JOB.
ANCHOR TO GROUND WITH 3/8"x15" STEEL RODS WITH TOP 2" BENT 90°.
5 PAIR 3"x3" LOOSE-PIN BUTT HINGES ARE REQ'D.



COOPERATIVE EXTENSION WORK IN
AGRICULTURE AND HOME ECONOMICS
DEPARTMENT OF AGRICULTURAL ENGINEERING
UNIVERSITY OF MARYLAND
AND
UNITED STATES DEPARTMENT OF AGRICULTURE COOPERATING
PLASTIC COVERED
GREENHOUSE-GOLDFRAME
ORE. '62 EX. 5941 SHEET 2 OF 2