

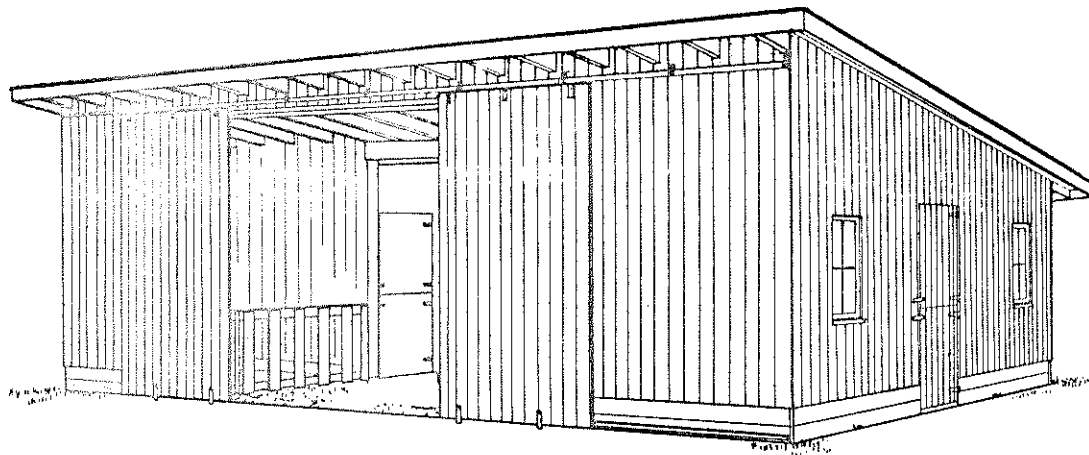
NOTE: THIS BUILDING IS DESIGNED FOR USE IN AREAS WHERE THE SNOW LOAD DOES NOT EXCEED 35 LBS. PER SQUARE FOOT AND WINDS ARE NOT ABOVE 76 MILES PER HOUR.

COOPERATIVE EXTENSION SERVICE
AGRICULTURE AND HOME ECONOMICS

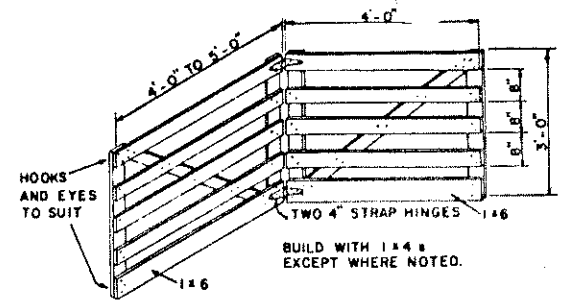
UNITED STATES DEPARTMENT OF AGRICULTURE COOPERATING

SHEEP AND LAMBING SHED

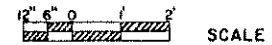
USDA 61	5919	SHEET 1 OF 2
REVISED '84		



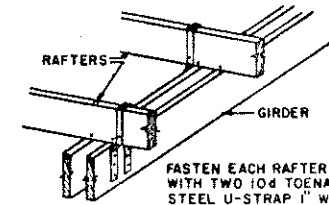
PERSPECTIVE VIEW
OF COMPLETED SHED



HINGED PANELS FOR TEMPORARY
LAMBING PENS

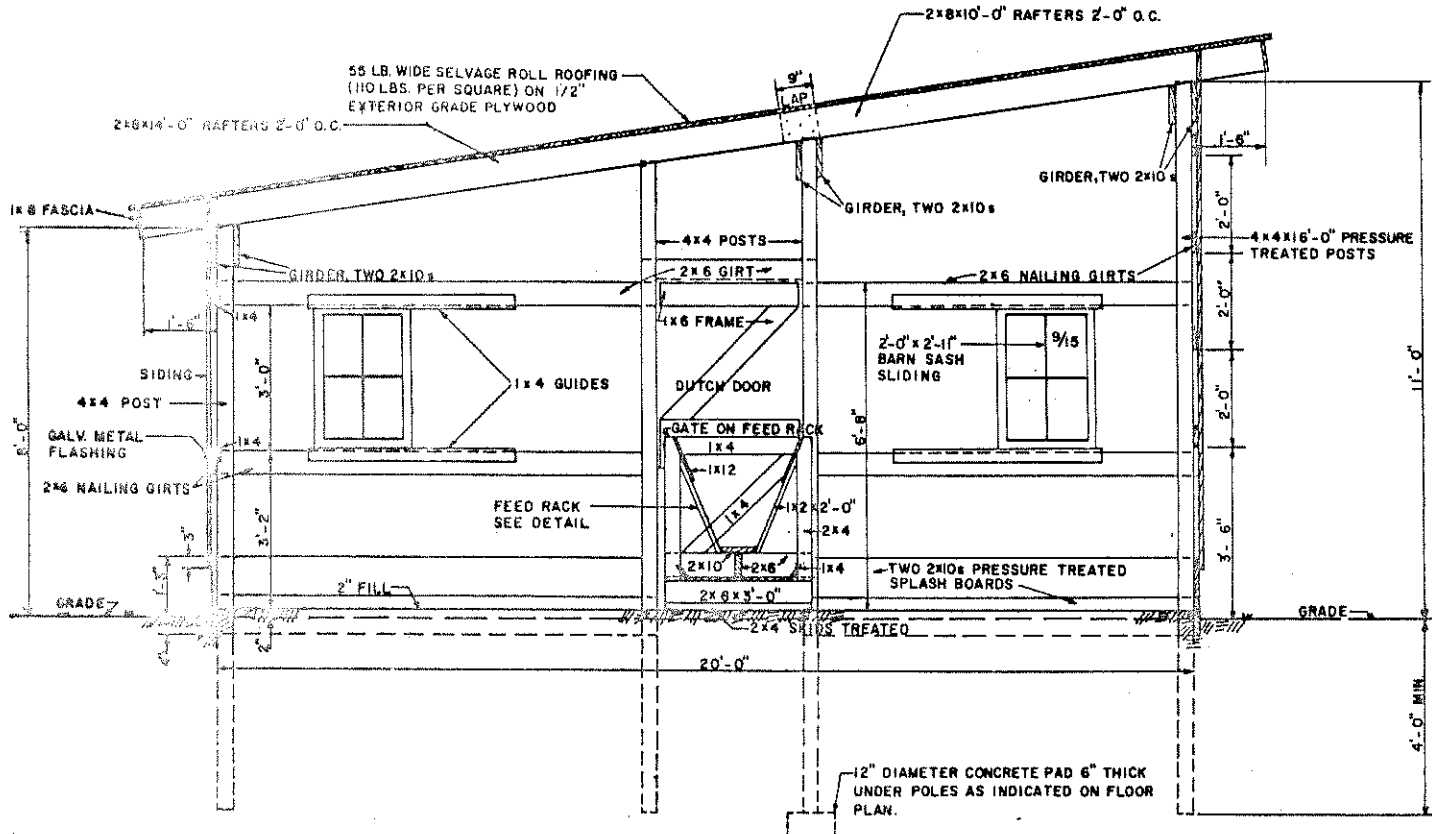


SCALE

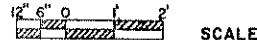


FASTEN EACH RAFTER TO GIRDER
WITH TWO 10d TOENAILS AND ONE 24 GA.
STEEL U-STRAP 1" WIDE WITH THREE
6d NAILS IN EACH END; STAGGER
STRAPS AND NAILS TO RAFTER
WITH THREE 6d NAILS.

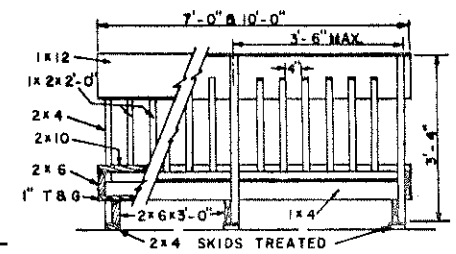
NAILING DETAIL
NO SCALE



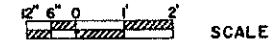
SECTION A-A



SCALE



DETAIL ELEVATION OF FEED RACKS



SCALE

COOPERATIVE EXTENSION WORK IN
AGRICULTURE AND HOME ECONOMICS

AND
UNITED STATES DEPARTMENT OF AGRICULTURE COOPERATING

SHEEP AND LAMBING SHED

USDA '61 EX. 5919

SHEET 2 OF 2

REVISED '84