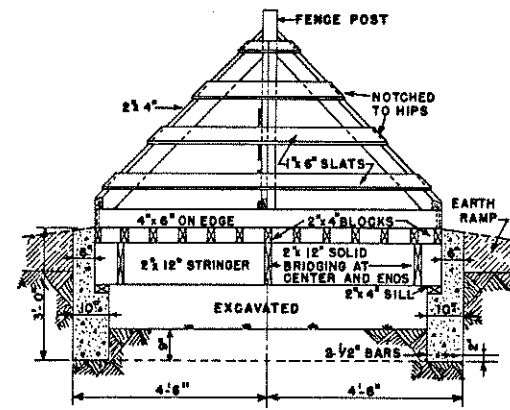


SECTION A-A



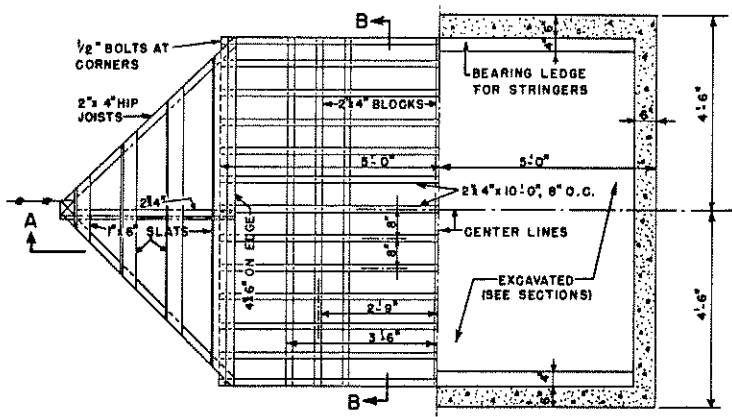
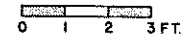
SECTION B-B

SECTION A-A, SHOWS GUARD FLOOR BUILT LEVEL WITH GRADE
SECTION B-B, SHOWS GUARD FLOOR RAISED ABOVE GRADE

BILL OF MATERIAL

- LUMBER**
- FENCE POSTS: 2-PCS 4"x4"x7'-0"
 - FRAMING: 3-PCS 2"x12"x10'-0"
 - 7-PCS 2"x12"x8'-0"
 - 13-PCS 2"x4"x10'-0"
 - 2-PCS 2"x4"x9'-0"
 - 3-PCS 2"x4"x8'-0"
 - 6-PCS 2"x4"x6'-0"
 - 9-PCS 1"x6"x8'-0"
 - GUARD RAILS: 2-PCS 4"x6"x8'-0"
- CONCRETE:** 2 1/2 CU. YDS. (1:3:5 MIXTURE)
- CEMENT:** 12 SAGS
- SAND:** 1.25 CU. YDS.
- AGGREGATE:** 2.15 CU. YDS.
- MISCELLANEOUS**
- ANCHOR BOLTS: 4-1/2"x12" GALVANIZED
 - REINFORCING RODS: 4-1/2"x9'-9"
 - 2-1/2"x8'-9"

NOTE:
TIMBERS IN CONTACT WITH EARTH OR CONCRETE ARE TO BE PRESSURE TREATED WITH PRESERVATIVE.



1/2 OF PLAN 1/2 OF FOUNDATION

COOPERATIVE EXTENSION WORK IN
AGRICULTURE AND HOME ECONOMICS
DEPARTMENT OF AGRICULTURAL ENGINEERING
UNIVERSITY OF MARYLAND
AND
UNITED STATES DEPARTMENT OF AGRICULTURE COOPERATING

CATTLE GUARD
CONCRETE AND WOOD

USDA '80 EX. 5904 SHEET 1 OF 1