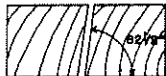
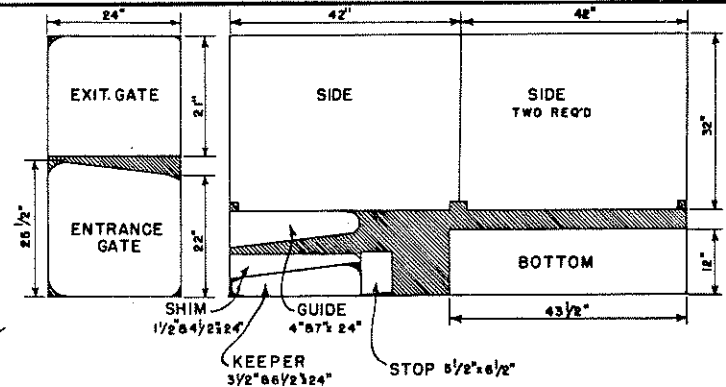
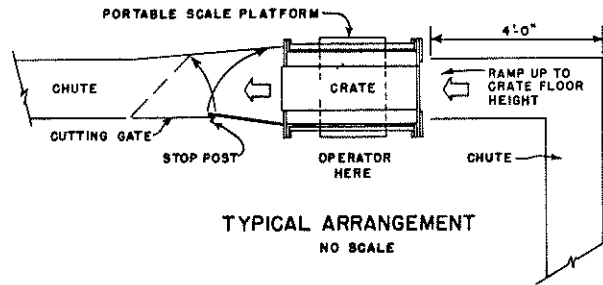


LIST OF MATERIALS

ITEM	SIZE	QUANTITY
LEDGERS & WALES	2" x 4" x 7'-0"	1 PC.
END FRAMES	1" x 12" x 6'-0"	1 "
"	1" x 4" x 10'-0"	1 "
PLYWOOD PARTS	1/2" x 4'-0" x 7'-0"	1 PANEL
"	1/2" x 2'-0" x 4'-0"	1 "
HARDWARE:		
GATE HANDLES	3/4" METAL TUBING	4-1/6"
HINGES	SPRING TYPE	2
LATCH	"	1
CARRYING HANDLES	5"	2
CROSS BRACING	3/16" x 1 1/4" F.B.	6'-0"
CLAMPS	"	3'-0"
"	1/4" x 2" "	4'-0"



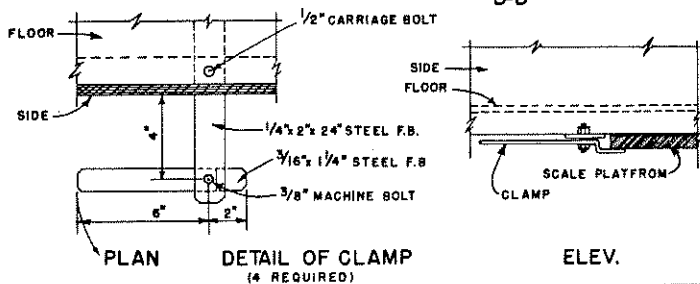
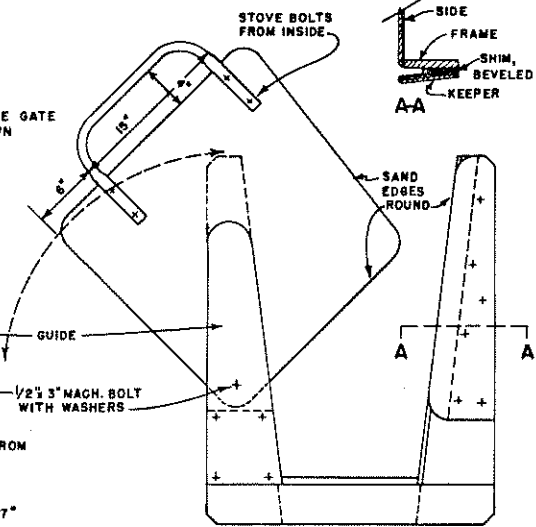
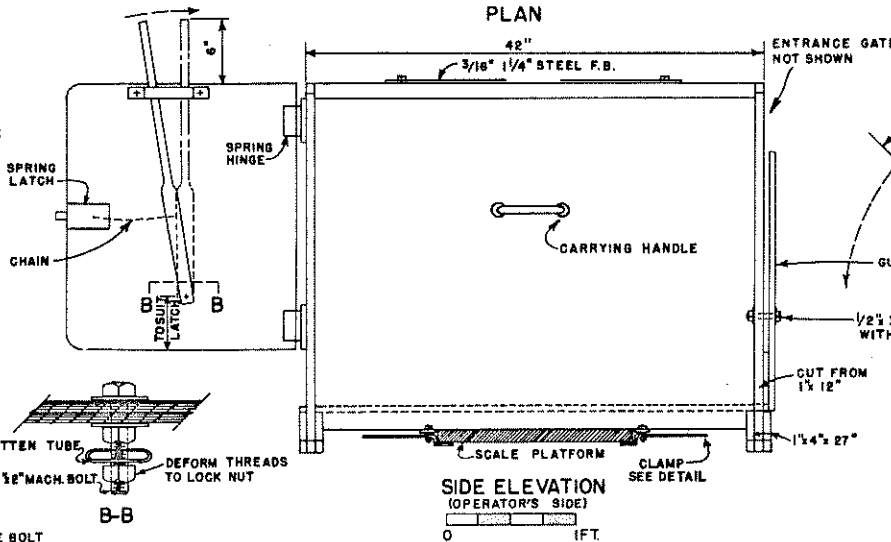
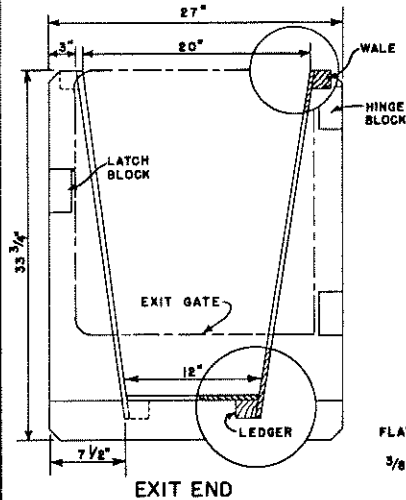
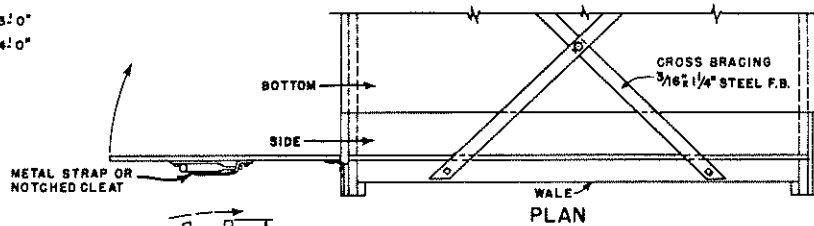
LEDGERS & WALES
RIP FROM DRESSED 2x4"



CUTTING DIAGRAM FOR PLYWOOD

* 1/2" EXTERIOR GRADE
CUT HINGE & LATCH BLOCKS FROM WASTE

0 2 FT



GENERAL NOTES:

ASSEMBLE CRATE WITH SCREWS AND BOLTS. USE RUSTPROOF FASTENINGS AND OTHER METAL PARTS WHERE POSSIBLE.
ALL WOODEN PARTS SHOULD BE THOROUGHLY BRUSH-COATED WITH COPPER NAPHTHENATE AFTER CUTTING.

0 1 FT. UNLESS OTHERWISE NOTED.		
COOPERATIVE EXTENSION WORK IN AGRICULTURE AND HOME ECONOMICS DEPARTMENT OF AGRICULTURAL ENGINEERING UNIVERSITY OF MARYLAND AND UNITED STATES DEPARTMENT OF AGRICULTURE COOPERATING		
WEIGHING CRATE FOR SHEEP		
USDA '60	EX. 5877	SHEET 1 OF 1