

- GENERAL NOTES:
- DESIGN LOADS  
LIVE ROOF LOAD - 20 LB. PER SQ. FT.  
BINS - 6' DEPTH OF WHEAT WIND - 78 MILES PER HOUR
  - RECOMMENDED BATCH CAPACITY FOR DRYING GRAIN - 3' DEPTH - 640 BU. PER BIN  
BALED HAY - 5 BALES DEEP - 135 BALES PER BIN  
PEANUTS - 6' DEPTH - 11 T. PER BIN (RUNNERS) 12.5 T. PER BIN (SMALLERS)
  - AT GRAIN DEPTHS BELOW 3' THE EDGES OF THE GRAIN PILE SHOULD HAVE SHALLOWER DEPTH FOR UNIFORMITY OF DRYING AT THE EDGES. PACK BALED HAY TIGHTLY. PUT CUT SIDE OF BALE DOWN.
  - MINIMUM RECOMMENDED FAN - 7.5 H.P. (FOR 3 BINS) HEAT REQUIREMENT - ADJUSTABLE BETWEEN 250,000 AND 1,200,000 B.T.U. PER HOUR.
  - STORAGE CAPACITY  
GRAIN - 6' DEPTH - 1280 BU. PER BIN  
BALED HAY TO ROOF - 16 T. PER BIN  
PEANUTS (MIXING BETWEEN BINS) 24 T. PER BIN
  - AIR TUNNEL DESIGNED FOR 37,000 C.F.M. THIS DELIVERY WOULD SERVE 6 BINS MAXIMUM TO CARE FOR FUTURE EXPANSION.
  - IF DESIRED A MAN DOOR MAY BE INSTALLED OVER THE AIR TUNNEL DOOR TO PERMIT INSPECTION FROM THE TOP OF THE AIR TUNNEL.
  - PIER FOOTINGS MUST BE DEEP ENOUGH TO BEAR ON SOLID GROUND.
  - EQUIP. BUILDING WITH AN ADEQUATE LIGHTNING PROTECTION SYSTEM IN AREAS WHERE NEEDED.



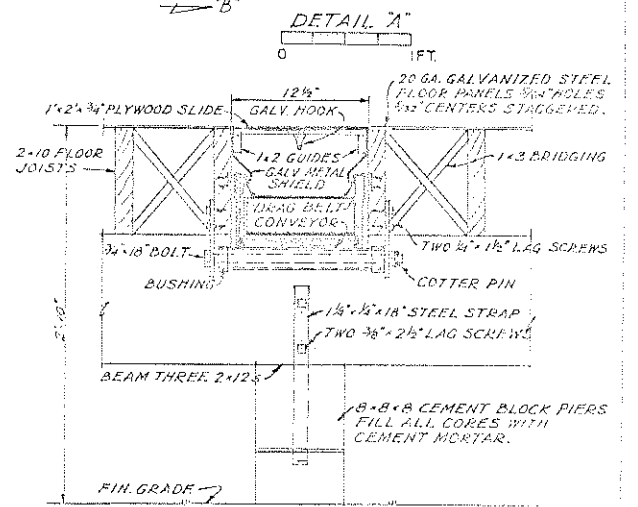
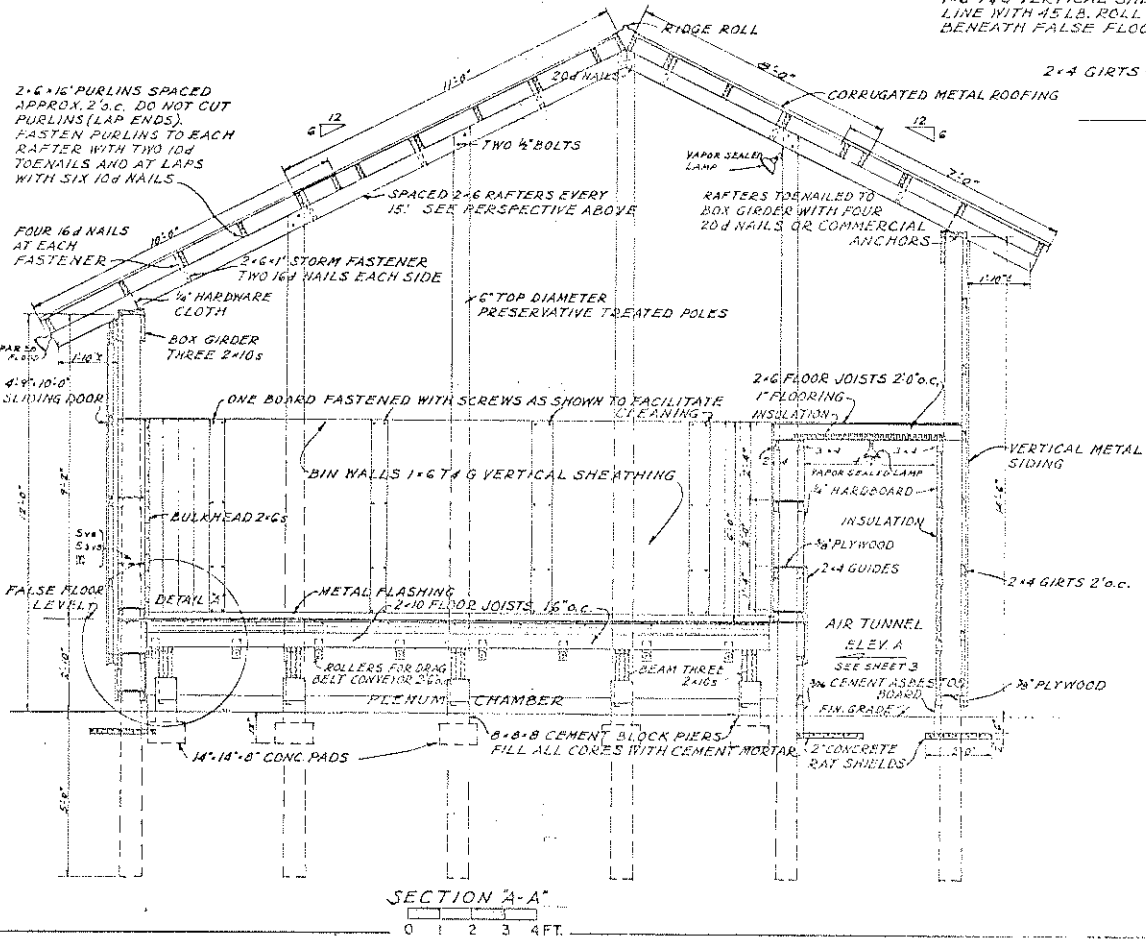
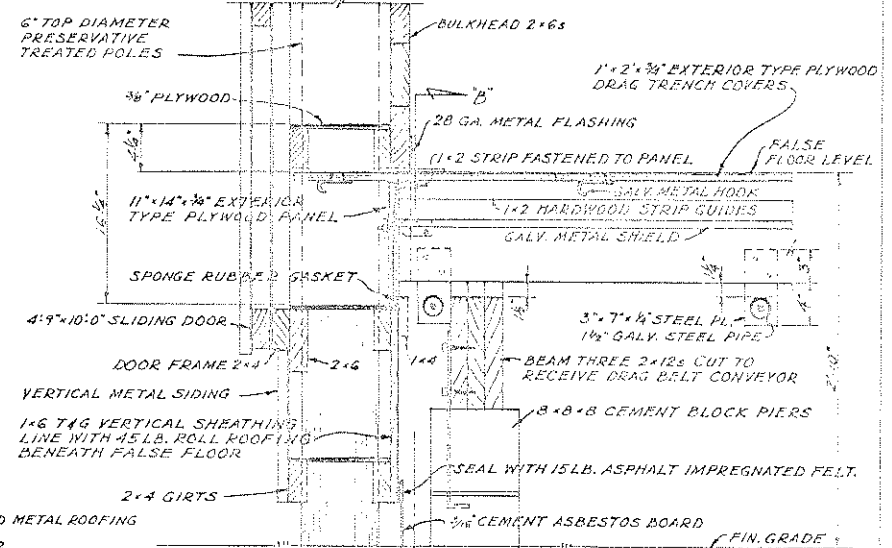
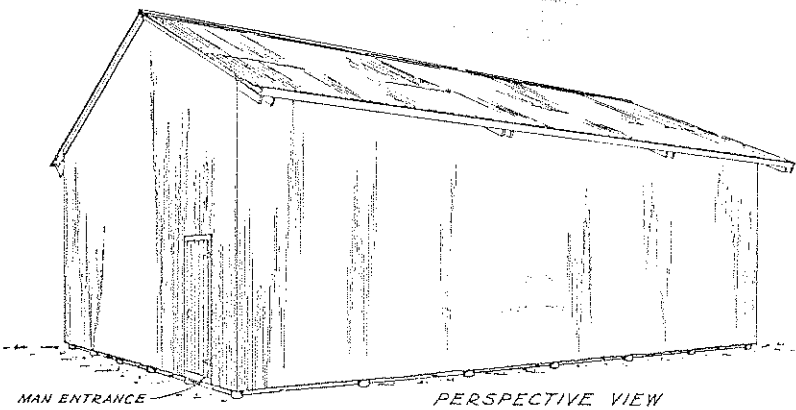
- ELECTRICAL SYMBOLS
- Svs - VAPOR SEALED SINGLE SWITCH
  - S3vs - VAPOR SEALED 3WAY SWITCH
  - CVs - VAPOR SEALED LAMP HOLDER
  - CL - PAR 26 FLOODS
  - GR - CONVENIENCE OUTLET GROUNDED
  - CG - OUTLETS FROM 3 CIRCUITS
  - 110V CONVENIENCE GROUNDED
  - 220V TRIST LOCK FOR 3HP
  - 220V TRIST LOCK FOR 3HP
  - \* - CONSIDER EXPANSION REQUIREMENTS MAY NEED 200A.

COOPERATIVE EXTENSION WORK IN  
AGRICULTURE AND HOME ECONOMICS  
DEPARTMENT OF AGRICULTURAL ENGINEERING  
UNIVERSITY OF MARYLAND  
AND  
UNITED STATES DEPARTMENT OF AGRICULTURE COOPERATING

DRYING AND STORAGE CHED

USDA '59 EX. 5869 SHEET 1 OF 3

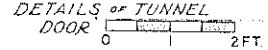
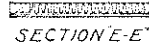
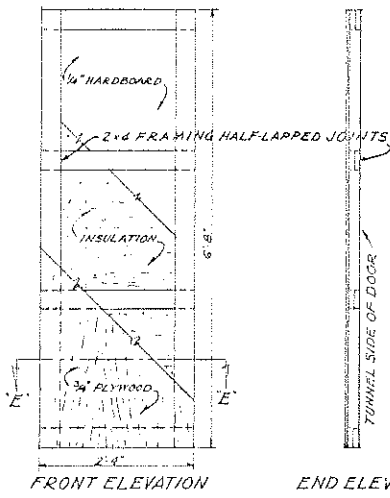
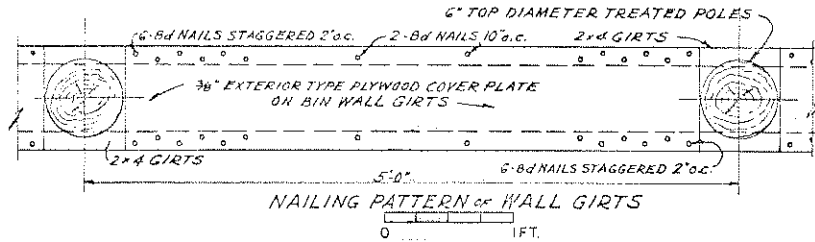
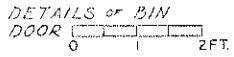
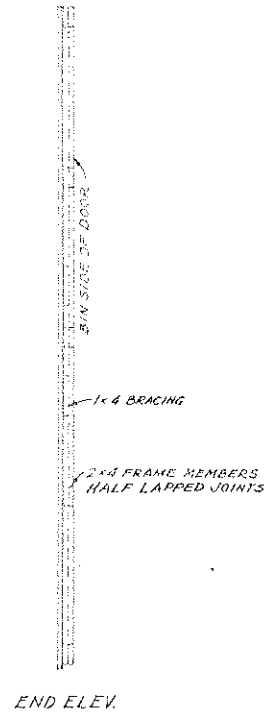
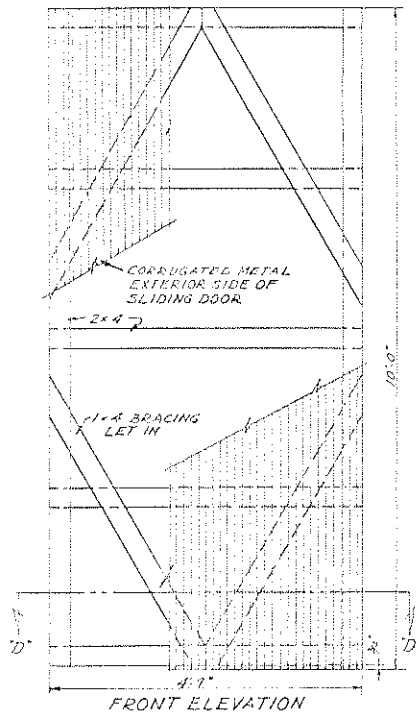
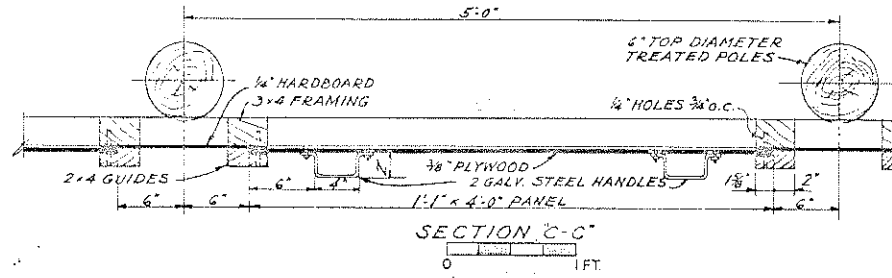
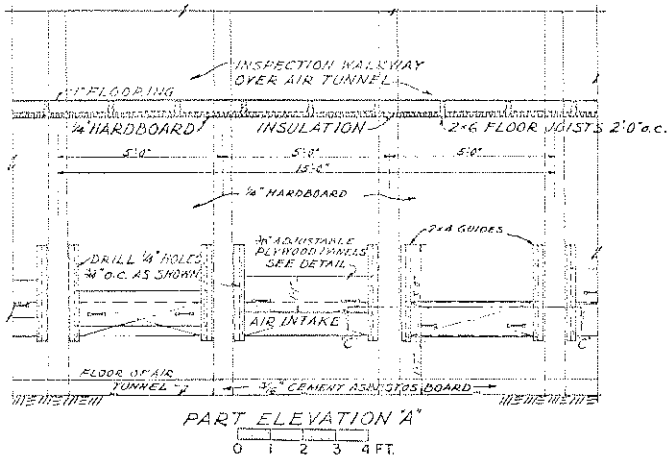
0 2 4 6 FT. UNLESS OTHERWISE NOTED.



COOPERATIVE EXTENSION WORK IN  
 AGRICULTURE AND HOME ECONOMICS  
 DEPARTMENT OF AGRICULTURAL ENGINEERING  
 UNIVERSITY OF MARYLAND  
 AND  
 UNITED STATES DEPARTMENT OF AGRICULTURE COOPERATING

**DRYING AND STORAGE SHED**

USDA '59 EX. 5869 SHEET 2 OF 3



- OPERATIONAL NOTES:**
1. DRAG CONVEYOR 20' LONG TO BE MOVED FROM BIN TO BIN.  
FOR SMALL GRAINS, WIPERS TO KEEP GRAIN FROM GETTING UNDER EDGE OF BELT ARE ESSENTIAL. 6" BELTS HANDLE ABOUT 1000 BU. PER HOUR.
  2. SLIDE DOORS IN TUNNEL MAY BE USED AS THROTTLE VALVES TO CONTROL FLOW TO BINS.  
FOR UNEQUAL DEPTHS IN BINS:
- | BIN 1 |           | BIN 2    |           |
|-------|-----------|----------|-----------|
| DEPTH | GATE OPEN | DEPTH    | GATE OPEN |
| FULL  | 12"       | 1/4 FULL | 9"        |
| FULL  | 12"       | 1/2 FULL | 6 3/4"    |
| FULL  | 12"       | 3/4 FULL | 4 3/4"    |
| FULL  | 12"       | 1/2 FULL | 3 1/4"    |
| FULL  | 12"       | 3/8 FULL | 1 3/4"    |
| FULL  | 12"       | 1/4 FULL | 3/4"      |
- WHEN ONE BIN IS DRIER THAN ANOTHER, THROTTLE AIR TO REDUCE DELIVERY TO DRY BIN. LOW AIR FLOWS ARE MORE ECONOMICAL WHEN PRODUCT IS NEARLY DRY.
3. WHEN REMOVING DRAG TRENCH COVERS, FULL THEM SLOWLY TO AVOID JAMMING AND OVERFLOWING DRAG BELT.
  4. CAUTION: BE SURE NO ONE IS IN TUNNEL AND BOTH MAN DOORS ARE SECURE BEFORE STARTING FAN AND BURNER.

COOPERATIVE EXTENSION WORK IN AGRICULTURE AND HOME ECONOMICS  
 DEPARTMENT OF AGRICULTURAL ENGINEERING  
 UNIVERSITY OF MARYLAND  
 AND  
 UNITED STATES DEPARTMENT OF AGRICULTURE COOPERATING

**DRYING AND STORAGE SHED**

USDA '59 EX. 5869 SHEET 3 OF 3