

PLAN
SCALE: 1" = 3' 6"

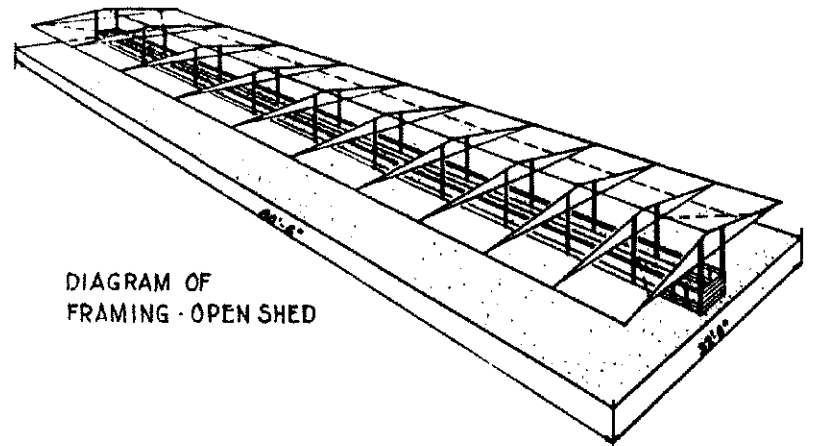
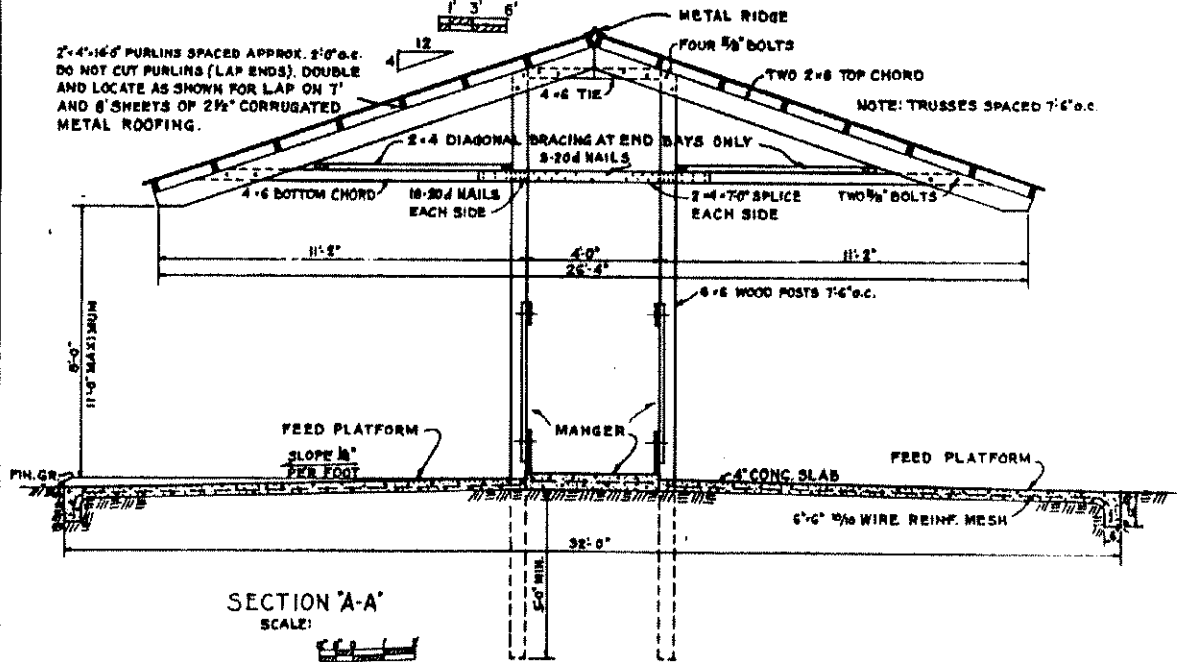
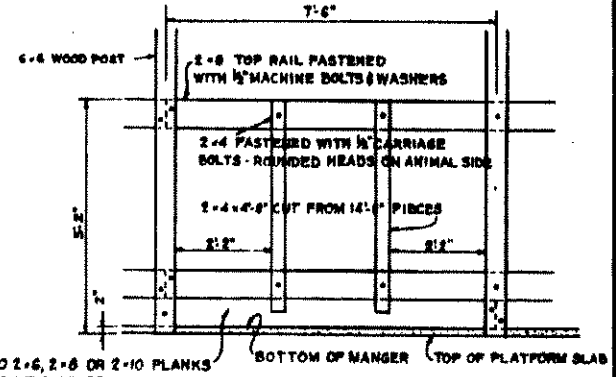


DIAGRAM OF FRAMING - OPEN SHED



SECTION 'A-A'
SCALE: 1" = 3' 6"



FRONT ELEVATION OF MANGER
SCALE: 1" = 3' 6"

NOTES:
FOR LONGEST SERVICE ALL WOOD POSTS AND SIDES OF MANGER (PLANKS) SHOULD BE PRESSURE-TREATED WITH PRESERVATIVE. SOME PRESERVATIVE TREATED POSTS & LUMBER USE PRESERVATIVES THAT EPA DOES NOT ALLOW IN CONTACT WITH FEED. IN SUCH CASES PLYWOOD OR PLASTIC SHOULD BE USED AS A LINER. CHECK SUPPLIER OR LABELS FOR GUIDANCE. ALL BOLTS SHOWN ARE MACHINE BOLTS WITH WASHERS UNLESS OTHERWISE NOTED. LENGTH OF BUILDING MAY BE VARIED IN UNITS OF 7 FEET 6 INCHES.

HEIGHT OF BUILDING IS VARIABLE, BUT NOT TO EXCEED A MAXIMUM OF 11 FEET AS INDICATED. FASTEN PURLINS TO EACH TRUSS WITH TWO 10d TOENAILS AND AT LAPS WITH SIX 10d NAILS. THIS STRUCTURE IS PRIMARILY INTENDED FOR USE IN AREAS WHERE THE SNOW LOAD DOES NOT EXCEED 20 LBS. PER SQ. FT. AND WIND DOES NOT EXCEED 76 MPH PER HOUR. THIS FEEDER IS INTENDED TO BE FILLED BY AUGER, RECIPROCATING CONVEYOR OR CARRIER.

COOPERATIVE EXTENSION WORK IN AGRICULTURE AND HOME ECONOMICS

UNITED STATES DEPARTMENT OF AGRICULTURE COOPERATIVE

COVERED FEEDER FOR CATTLE
TYPE "B"

USDA '88 EX. 5862 SHEET 1 OF 1

REVISED '88