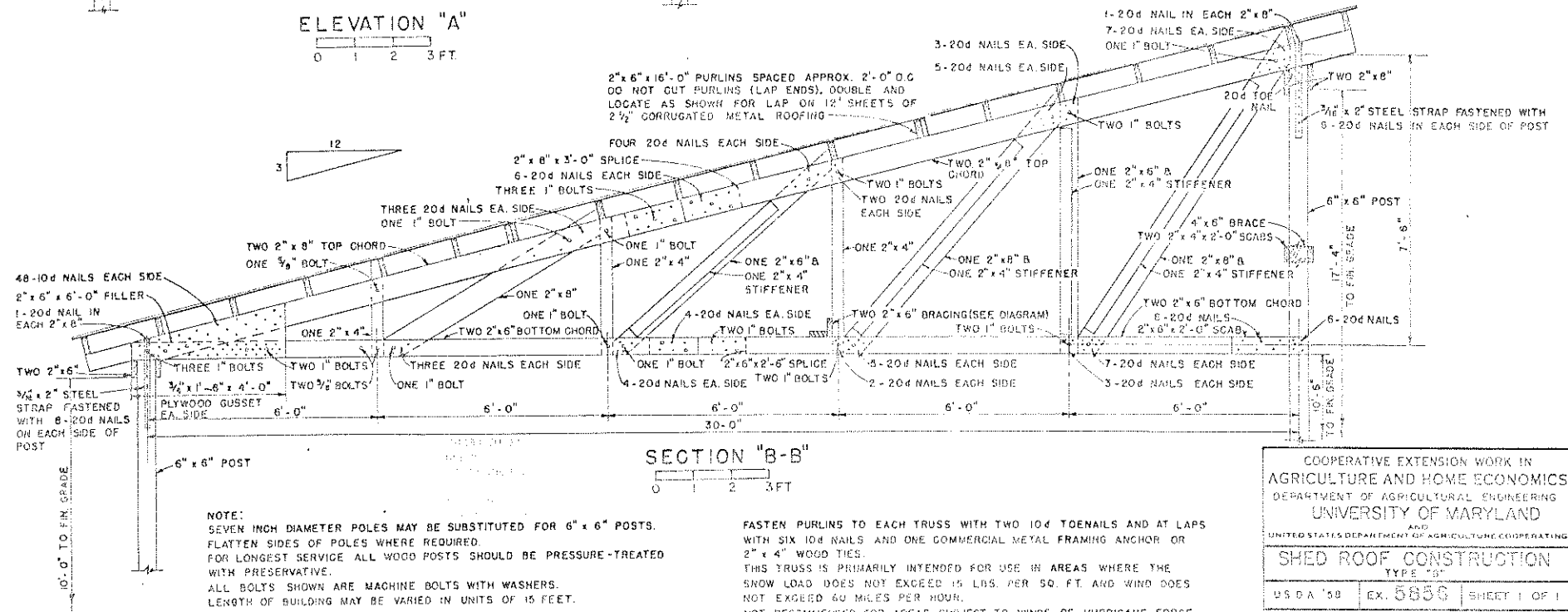
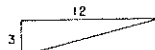
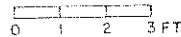
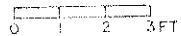


ELEVATION "A"



SECTION "B-B"



NOTE:
SEVEN INCH DIAMETER POLES MAY BE SUBSTITUTED FOR 6" x 6" POSTS. FLATTEN SIDES OF POLES WHERE REQUIRED. FOR LONGEST SERVICE ALL WOOD POSTS SHOULD BE PRESSURE-TREATED WITH PRESERVATIVE.
ALL BOLTS SHOWN ARE MACHINE BOLTS WITH WASHERS. LENGTH OF BUILDING MAY BE VARIED IN UNITS OF 15 FEET.

FASTEN PURLINS TO EACH TRUSS WITH TWO 10d TOENAILS AND AT LAPS WITH SIX 10d NAILS AND ONE COMMERCIAL METAL FRAMING ANCHOR OR 2" x 4" WOOD TIES.
THIS TRUSS IS PRIMARILY INTENDED FOR USE IN AREAS WHERE THE SNOW LOAD DOES NOT EXCEED 15 LBS. PER SQ. FT. AND WIND DOES NOT EXCEED 60 MILES PER HOUR.
NOT RECOMMENDED FOR AREAS SUBJECT TO WINDS OF HURRICANE FORCE.

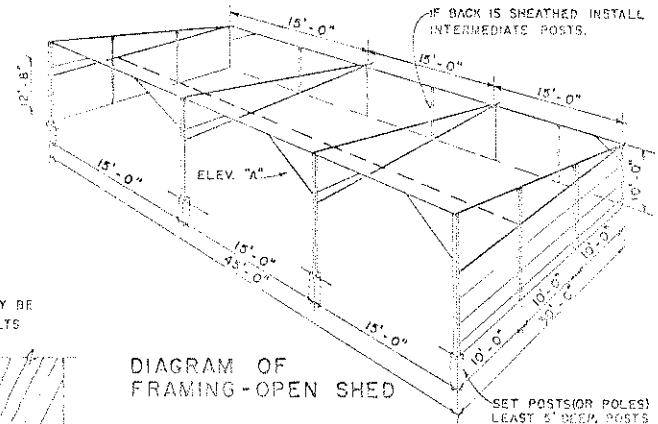
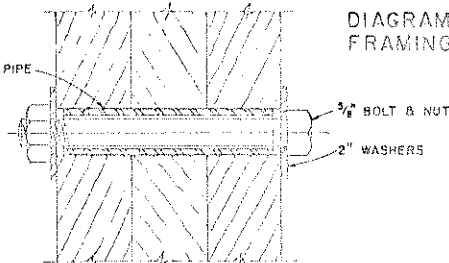


DIAGRAM OF FRAMING - OPEN SHED

SET POSTS (OR POLES) AT LEAST 5" DEEP. POSTS SPACED OVER 10' APART SHALL BE SET IN 12" DIAMETER CONCRETE BACKFILL.

NOTE: BOLTED PIPE SLEEVE MAY BE USED IN PLACE OF 1" BOLTS



BOLTED PIPE SLEEVE