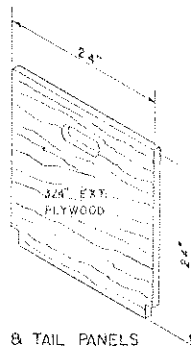


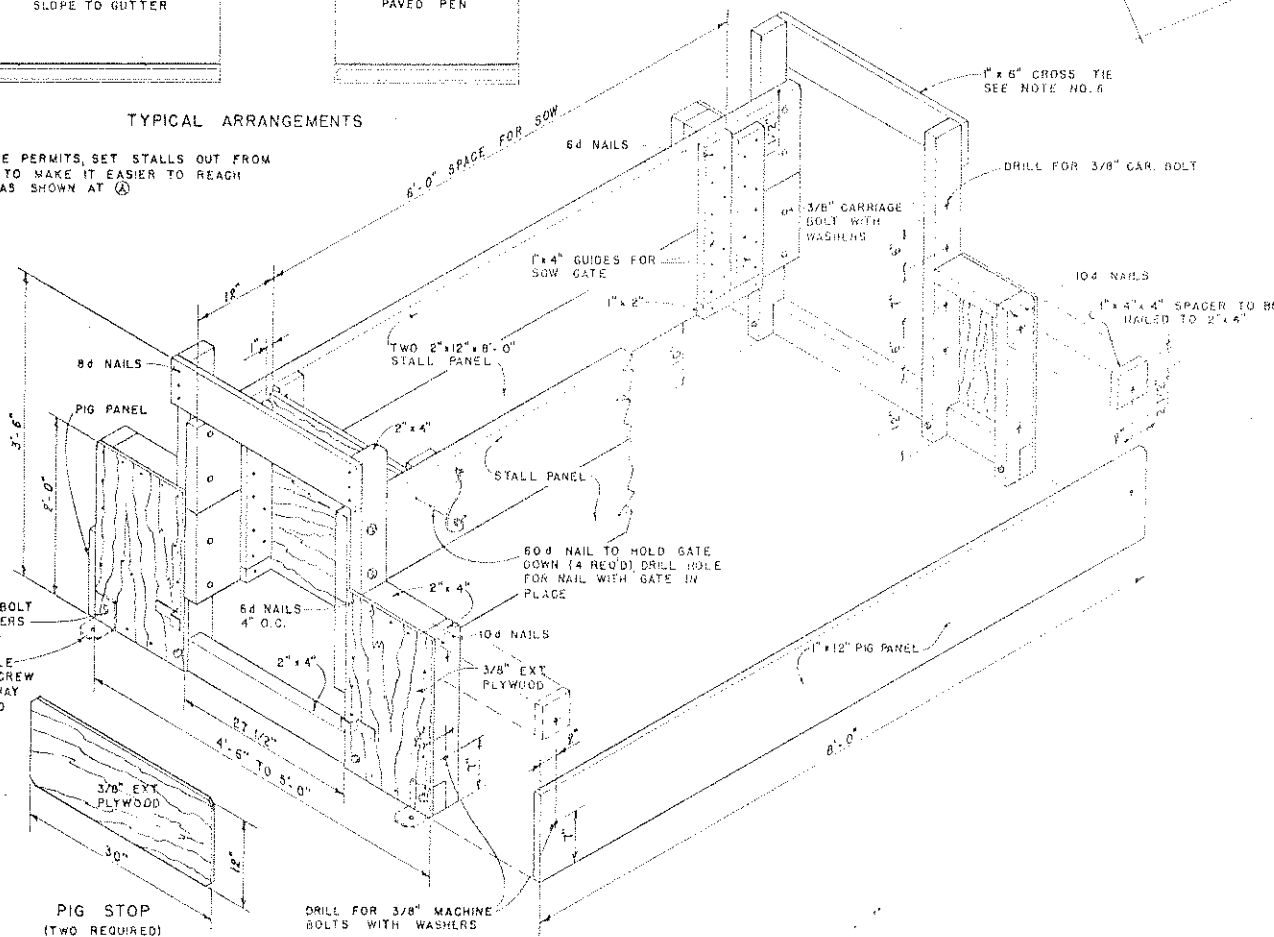
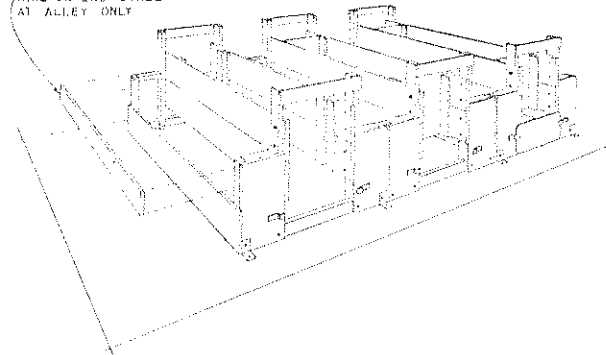
TYPICAL ARRANGEMENTS

NOTE:  
WHEN SPACE PERMITS, SET STALLS OUT FROM  
END WALL TO MAKE IT EASIER TO REACH  
THE PIGS AS SHOWN AT (A)

HEAD & TAIL PANELS



RAIL ON END STALL  
AT ALLEY ONLY



NOTE:

1. 2"x4" UPRIGHTS AND BASE OF THE END FRAMES SHOULD BE TREATED WITH PRESERVATIVE.
2. STALLS MAY BE SET UP IN ANY SUITABLE BLDG. A CONCRETE FLOOR IS RECOMMENDED.
3. THE SOW SHOULD BE PLACED IN THE STALL SEVERAL DAYS BEFORE FARROWING SO SHE CAN BECOME ACCUSTOMED TO HER SURROUNDINGS.
4. SOWS ARE TAKEN OUT OF THE STALLS FOR FEED, WATER AND EXERCISE.
5. THESE STALLS MAY BE DISASSEMBLED FOR STORAGE BY UNBOLTING THE STALL SIDES AND PIG PANELS. TO INSURE EASE OF REASSEMBLY IT IS ADVISABLE TO NUMBER THE PARTS OF EACH STALL.
6. IF THE STALLS ARE TO BE LEFT IN PLACE, THE 2"x4" UPRIGHTS NEED NOT EXTEND ABOVE THE STALL SIDES AND THE 1"x6" CROSS TIE WILL NOT BE NEEDED.

COOPERATIVE EXTENSION WORK IN  
AGRICULTURE AND HOME ECONOMICS  
DEPARTMENT OF AGRICULTURAL ENGINEERING  
UNIVERSITY OF MARYLAND  
AND  
UNITED STATES DEPARTMENT OF AGRICULTURE COOPERATING

WOOD - FRAMED  
**FARROWING STALL**

USDA '56 EX. 5826 SHEET 1 OF 1

VIEW SHOWING CONSTRUCTION

SWAINS