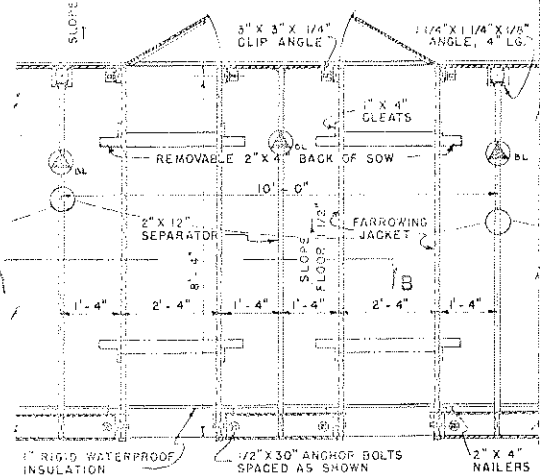
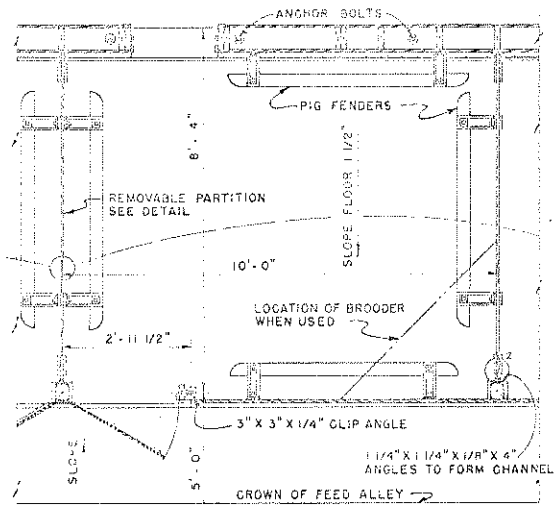


NOTE: RATPROOF FEED ROOM BY COVERING LOWER 12" OF DOORS WITH 26 GA. GALVANIZED SHEET STEEL.

COOPERATIVE EXTENSION WORK IN  
AGRICULTURE AND HOME ECONOMICS  
DEPARTMENT OF AGRICULTURAL ENGINEERING  
UNIVERSITY OF MARYLAND  
AND  
UNITED STATES DEPARTMENT OF AGRICULTURE COOPERATING

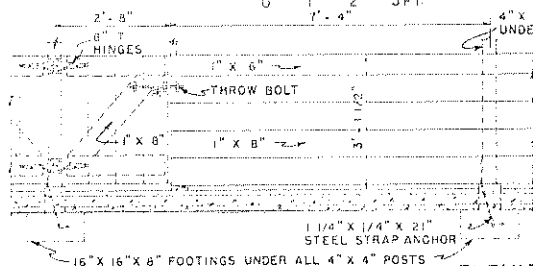
**CENTRAL FARROWING HOUSE**

USDA '56 EX. 5823 SHEET 1 OF 2



PARTIAL PLAN OF PEN AND STALLS

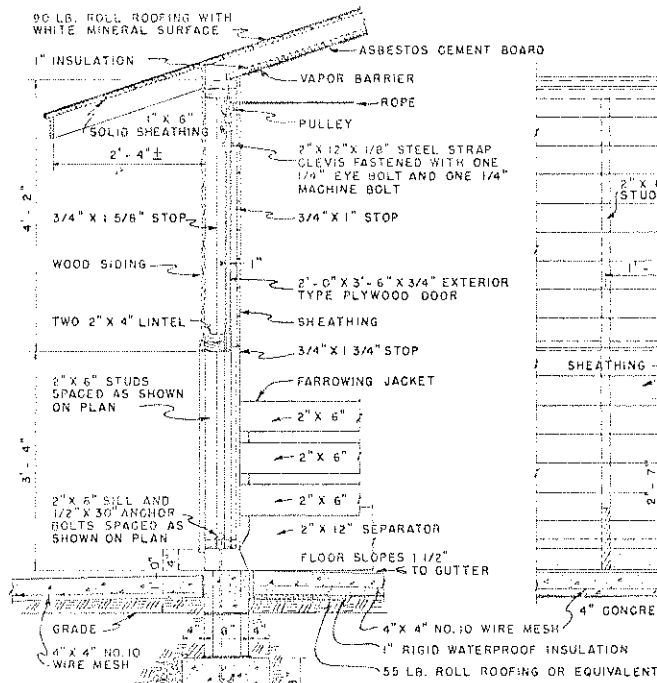
SCALE: 0 1 2 3 FT.



ELEVATION OF PEN & STALL FRONTS

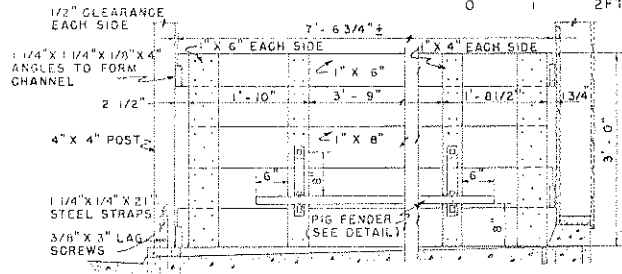
(PARTIAL CUT AWAY ON STALL FRONT)

SCALE: 0 1 2 FT.



SECTION THRU DOOR

SCALE: 0 1 2 FT.

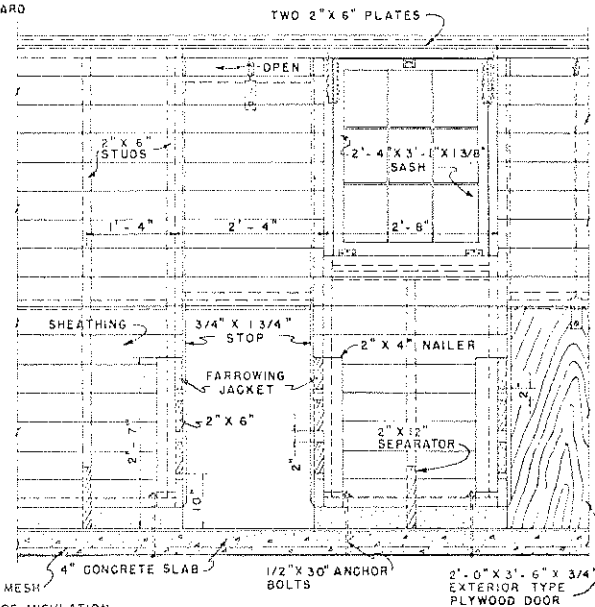
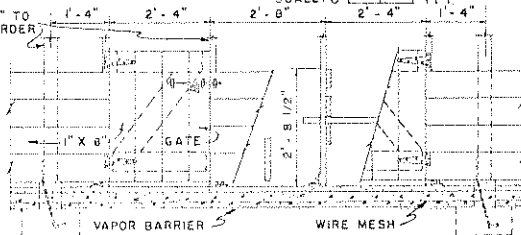


ELEVATION OF PEN PARTITION

(PARTITIONS MAY BE REMOVED BY LIFTING ENOUGH TO

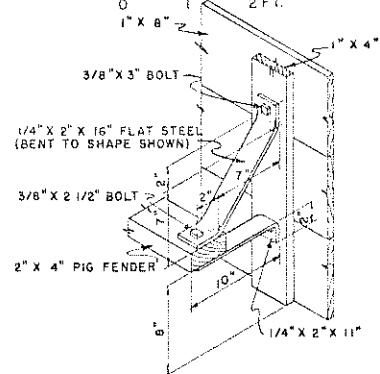
CLEAR CHANNELS)

SCALE: 0 1 FT.



SECTION THRU FARROWING STALLS AT B-B

SCALE: 0 1 2 FT.



FENDER DETAIL

SCALE: 1 1/2" = 1'-0"

NOTE:  
FILL ALL GORES  
AROUND ANCHOR  
BOLTS WITH  
CONCRETE

COOPERATIVE EXTENSION WORK IN  
AGRICULTURE AND HOME ECONOMICS  
DEPARTMENT OF AGRICULTURAL ENGINEERING  
UNIVERSITY OF MARYLAND

UNITED STATES DEPARTMENT OF AGRICULTURE COOPERATING

CENTRAL FARROWING HOUSE

USDA '56 EX. 5823 SHEET 2 OF 2