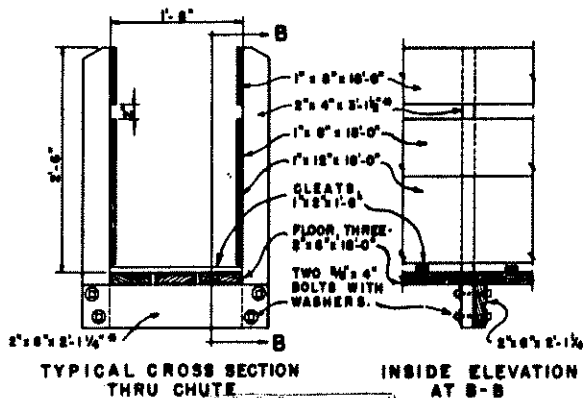
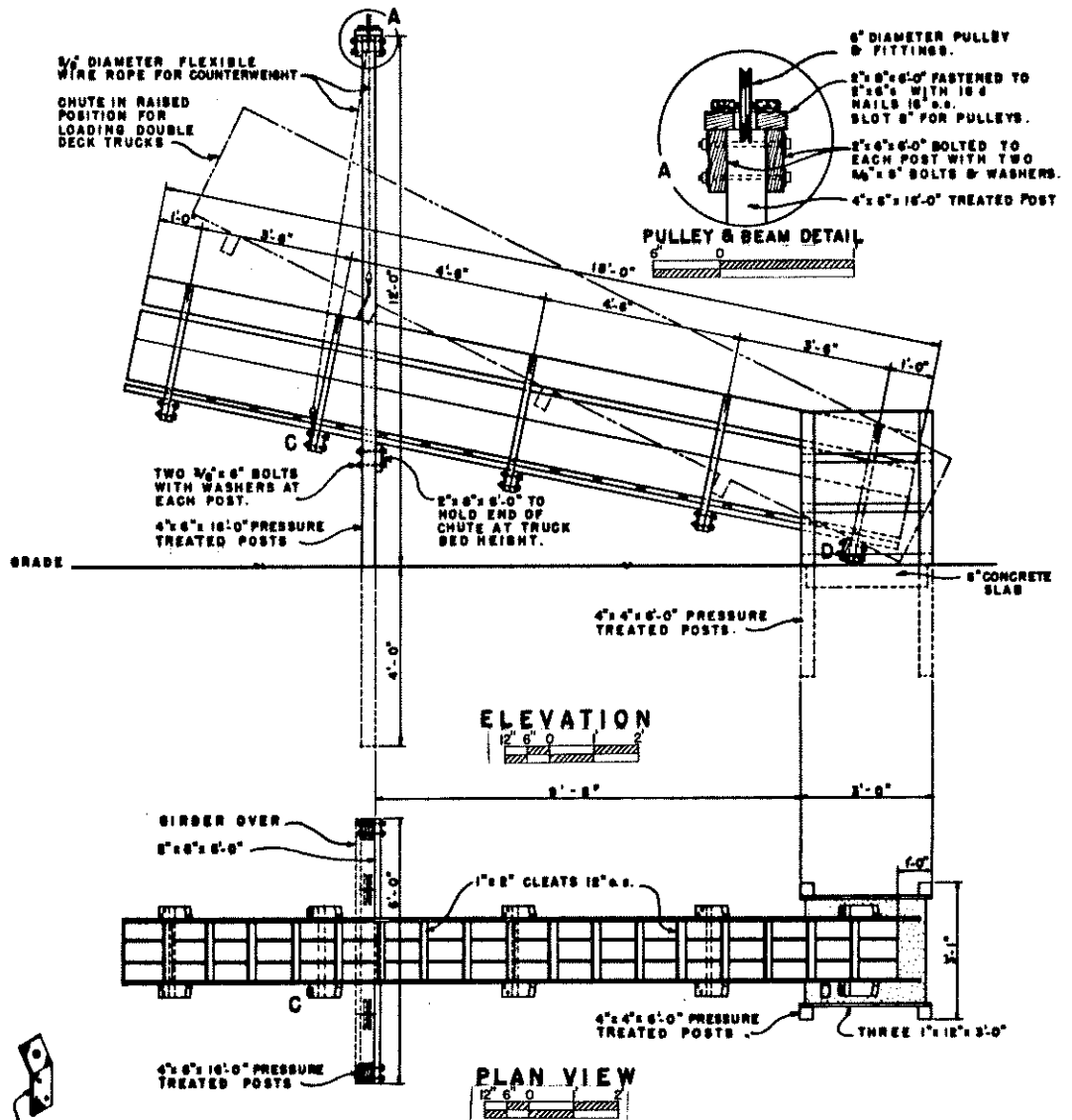
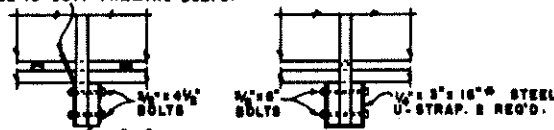


ISOMETRIC VIEW OF COMPLETED CHUTE

CONCRETE COUNTER WEIGHTS ABOUT 10" x 10" x 20" CAST AROUND EYE-BOLT (SOME ADJUSTMENT IN SIZE MAY BE REQUIRED DUE TO VARIATIONS IN WEIGHT OF LUMBER USED FOR CHUTE.)



1/2" x 3" x 10" STEEL STRAP FOR ANCHORING WIRE ROPE. 8 REQ'D. DRILL TO SUIT FRAMING BOLTS.



* DIMENSIONS BASED ON USE OF DRESSED LUMBER.

BASED ON CALIFORNIA PLAN 8-78-1

COOPERATIVE EXTENSION WORK IN AGRICULTURE AND HOME ECONOMICS

AND UNITED STATES DEPARTMENT OF AGRICULTURE COOPERATING

LOADING CHUTE FOR SHEEP

USDA '55 EX. 5810 SHEET 1 OF 1