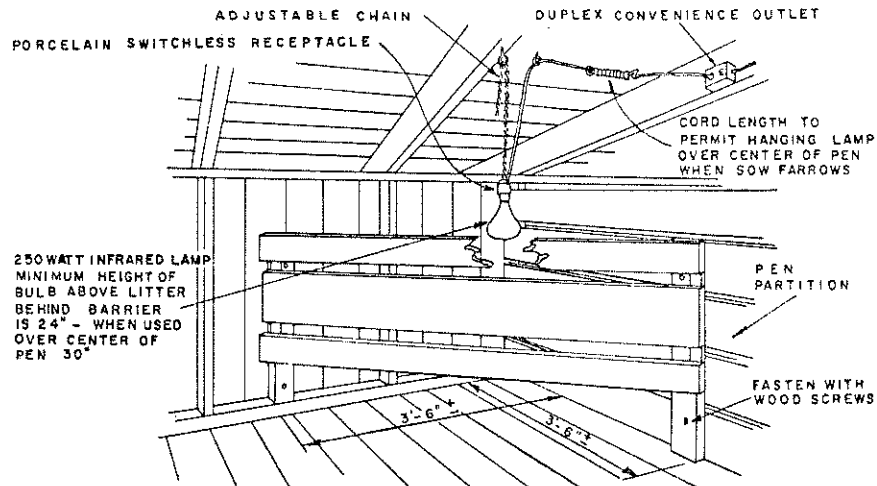
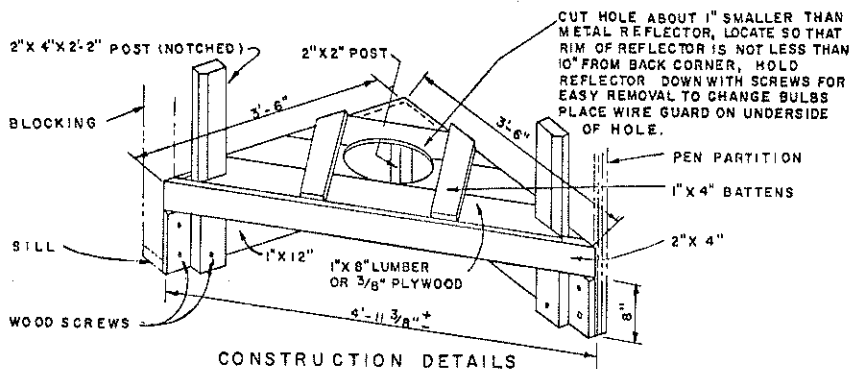


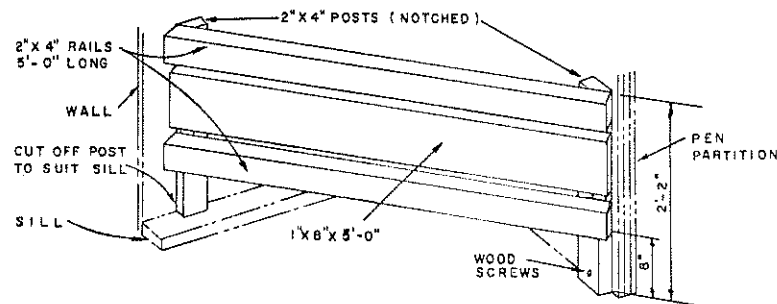
TYPICAL INSTALLATION



TYPICAL INSTALLATION



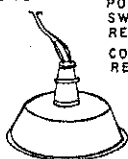
CONSTRUCTION DETAILS



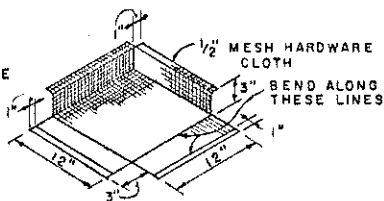
CONSTRUCTION DETAILS

NO. 16 RUBBER JACKETED TYPE HSJ CORD

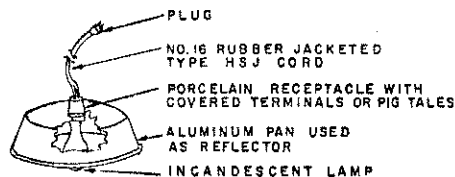
PORCELAIN SWITCHLESS RECEPTACLE
COMMERCIAL TYPE REFLECTOR



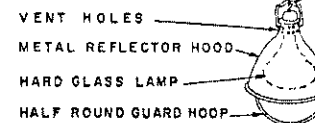
REFLECTOR (INCANDESCENT LAMP)



WIRE LAMP GUARD



LAMP ASSEMBLY (ALTERNATE)



REFLECTOR (ALTERNATE) (INFRARED LAMP)

PEN TYPE BROODER

RECOMMENDED INCANDESCENT LIGHT BULB SIZES

MILD WEATHER	60 WATTS
SEVERE WEATHER	100 WATTS
VERY SEVERE WEATHER	150 WATTS
DO NOT USE A LAMP (BULB) OF MORE THAN 150 WATTS	

HOVER TYPE BROODER

GENERAL HOG HOUSE WIRING RECOMMENDATIONS

1. NUMBER 12 A.W.G. TYPE UF, NON-METALIC SHEATHED CABLE.
2. DO NOT USE MORE THAN SIX 250 WATT LAMPS OR TEN 150 WATT LAMPS PER 20 AMPERE CIRCUIT
3. PERMANENT AND MOVABLE BUILDINGS MUST HAVE PROPERLY FUSED SERVICE ENTRANCE BOXES
4. THESE RECOMMENDATIONS ARE SUBJECT TO LOCAL REGULATIONS

COOPERATIVE EXTENSION WORK IN AGRICULTURE AND HOME ECONOMICS
DEPARTMENT OF AGRICULTURAL ENGINEERING
UNIVERSITY OF MARYLAND

AND
UNITED STATES DEPARTMENT OF AGRICULTURE COOPERATING

ELECTRIC PIG BROODERS

USCA '54 EX. 5788 SHEET 1 OF 1