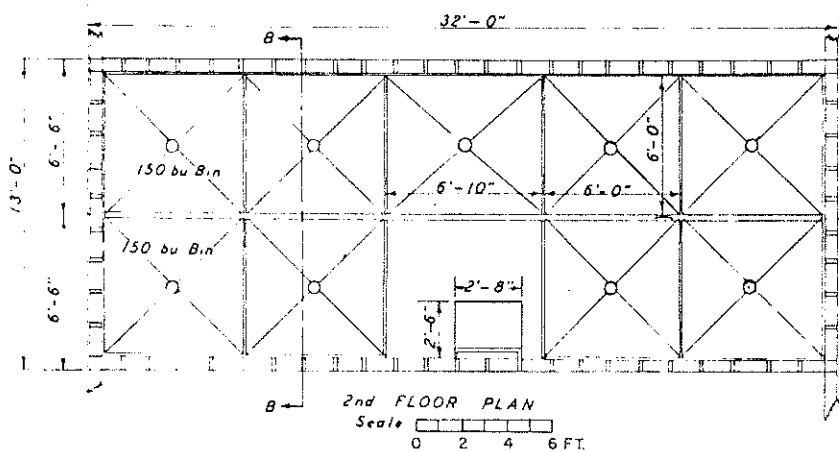


NOTE 1
Floor for grain bins designed for maximum load of 250 lbs. per sq. ft. Maximum depth of grain - 6 ft.

NOTE 2
Corn bin floors made moisture proof by laying good vapor barrier building paper before concrete is poured

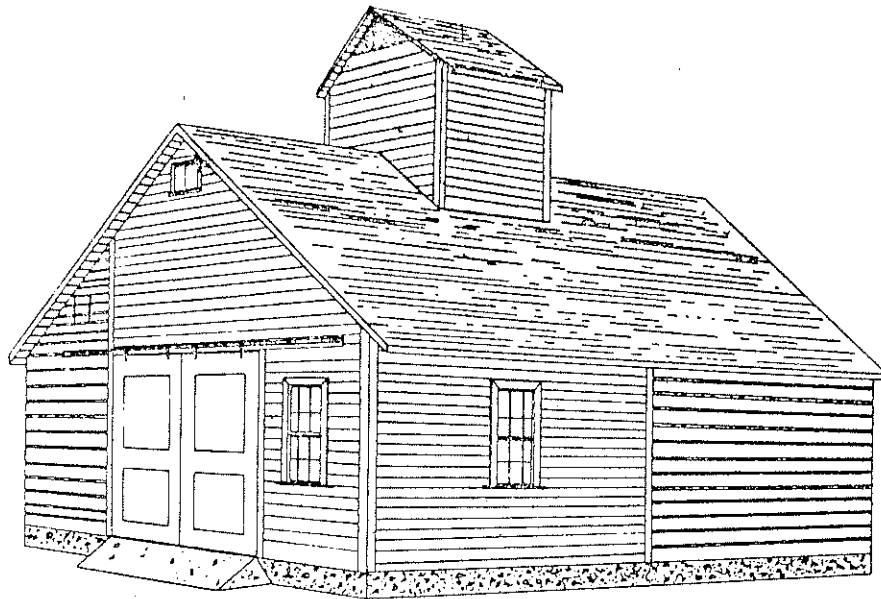
CAPACITY:
EAR CORN 1500 BU.
SMALL GRAIN 1350 BU.



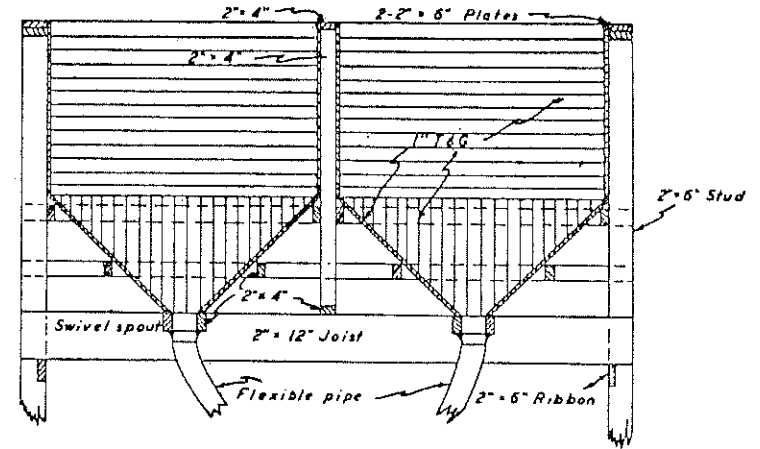
COOPERATIVE EXTENSION WORK IN
AGRICULTURE AND HOME ECONOMICS
DEPARTMENT OF AGRICULTURAL ENGINEERING
UNIVERSITY OF MARYLAND
AND
UNITED STATES DEPARTMENT OF AGRICULTURE COOPERATING

CORN CRIB AND GRANARY

VA. '46 EX. 5774 SHEET 1 OF 2



PERSPECTIVE VIEW



SECTION B-B THRU GRAIN BINS

Scale 0 1 2 3FT.

CONCRETE (1-2 3/4:3 mix)

Cement	180	bags
Sand	15.6	cu.yds.
Stone	21.0	cu.yds.

LUMBER

Sills	18	pcs.	2" x 6" x 8'-0"
Sills	16	"	2" x 6" x 12'-0"
Studding	74	"	2" x 6" x 10'-0"
Studding	52	"	2" x 6" x 16'-0"
Plates	16	"	2" x 6" x 12'-0"
Post	8	"	2" x 6" x 8'-0"
Post	1	"	8" x 8" x 10'-0"
Posts	2	"	4" x 8" x 10'-0"
Girders	5	"	2" x 12" x 10'-0"
Girders	5	"	2" x 12" x 6'-0"
Joists	38	"	2" x 12" x 14'-0"
Ties	6	"	2" x 6" x 8'-0"
Rafters	38	"	2" x 4" x 10'-0"
Rafters	38	"	2" x 4" x 12'-0"

BILL OF MATERIALS

LUMBER(cont'd)

Ribbons	6	pcs.	2" x 6" x 12'-0"
Ridgeboards	3	"	1" x 6" x 12'-0"
Braces	12	"	1" x 6" x 14'-0"
Trim	6	"	1" x 6" x 12'-0"
Trim	6	"	1" x 4" x 12'-0"
Trim	14	"	1" x 4" x 10'-0"
Siding (weatherboarding, asbestos board)			800 sq.ft.
Flooring T & G			1600 bd.ft.
Sheathing (roof solid)			1700 bd.ft.
Slats (1" x 4")			1200 bd.ft.
Roofing			14 squares
Doors	1		5'-0" x 7'-0"
Doors	3		2'-8" x 7'-0"
Windows	2	4 ft. (10" x 12") single sash	
Windows	2	12 ft. (10" x 12") double sash	

HARDWARE

Screening (M mesh)		1180	sq.ft.
Door tracks		25	lin. ft.
Anchor bolts	12		5/8" x 12" long
Nails, Paint, Flashing, etc.			

COOPERATIVE EXTENSION WORK IN
 AGRICULTURE AND HOME ECONOMICS
 DEPARTMENT OF AGRICULTURAL ENGINEERING
 UNIVERSITY OF MARYLAND
 AND
 UNITED STATES DEPARTMENT OF AGRICULTURE COOPERATING

CORN CRIB AND GRANARY

VA. '46 EX. 5774 SHEET 2 OF 2