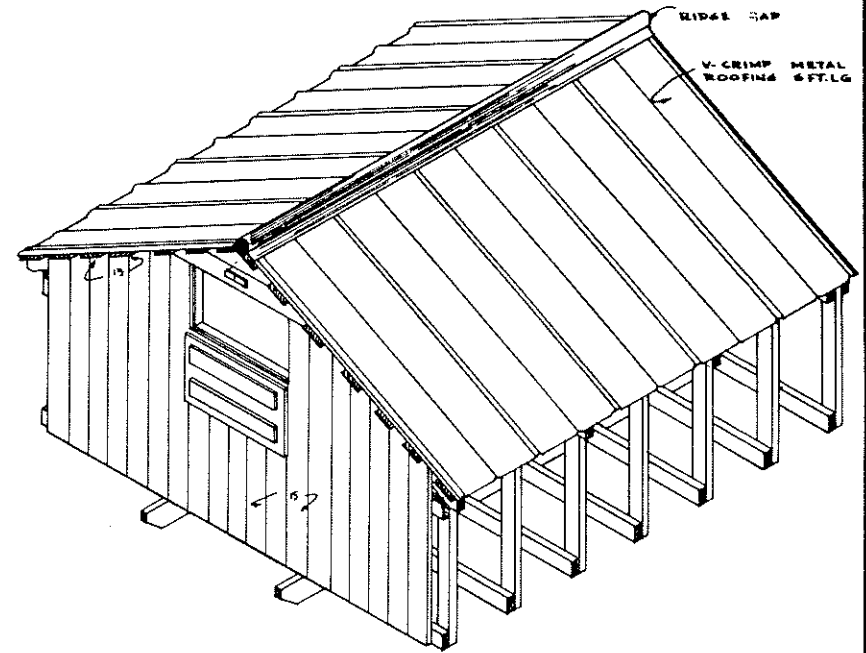


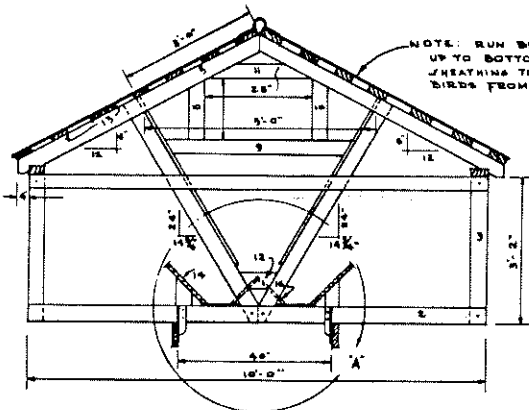
RAFTERS ARE SPACED DIRECTLY OVER EVERY OTHER BOTTOM JOIST.

NOTE: ALL FRAMING IS 2"x4" EXCEPT 2"x6" FOR RUNNERS

DETAIL OF FRAMING



COMPLETE VIEW OF FEEDER

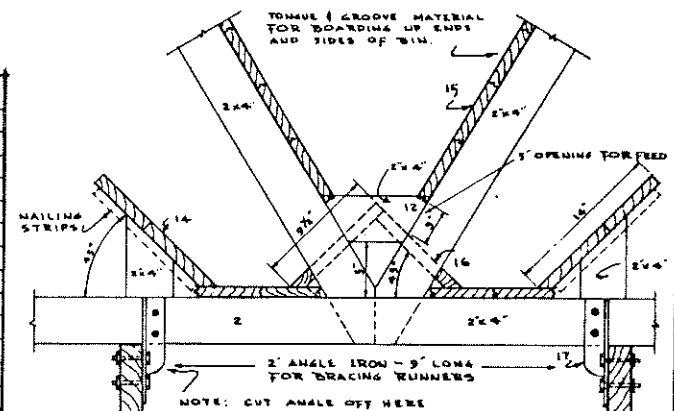


NOTE: RUN BIN SIDES UP TO BOTTOM OF SHEATHING TO PREVENT BIRDS FROM ENTERING

END VIEW SHOWING FRAMING

0 1 2 3 FT.

BILL OF MATERIALS		
PART NO.	LUMBER & SIZE OF MATERIAL	STANDARD STOCK TO CUT MATERIAL FROM
1	2 PCS. - 2"x6"x10'-0"	2 - 2"x6"x10'-0"
2	9 PCS. - 2"x4"x10'-0"	9 - 2"x4"x10'-0"
3	14 PCS. - 2"x4"x3'-2"	5 - 2"x4"x10'-0"
4	2 PCS. - 2"x4"x8'-10"	2 - 2"x4"x10'-0"
5	8 PCS. - 2"x4"x6'-0"	4 - 2"x4"x12'-0"
6	3 PCS. - 2"x4"x5'-0"	4 - 2"x4"x12'-0"
7	4 PCS. - 2"x4"x3'-6"	2 - 2"x4"x8'-0"
8	4 PCS. - 2"x4"x1'-0"	USE PCS. REMAINING FROM CUT NO. 7
9	2 PCS. - 2"x4"x4'-0"	1 - 2"x4"x8'-0"
10	4 PCS. - 2"x4"x1'-4"	1 - 2"x4"x10'-0"
11	2 PCS. - 2"x4"x2'-4"	USE PCS. REMAINING FROM CUT NO. 10
12	6 PCS. - 2"x4"x1'-0"	USE PCS. REMAINING FROM CUT NO. 3&4
13	14 PCS. - 1"x4"x12'-0"	14 - 1"x4"x12'-0"
14	2 PCS. - 1"x8"x10'-0"	2 - 1"x8"x10'-0"
15	2 PCS. - 1"x6"x10'-0"	2 - 1"x6"x10'-0"
16	250 SHEET 1/2" T & A. 10" 8D NAILS	
17	16 1/2" CARRIAGE BOLTS 2 1/2" LONG 3" 16D COMMON NAILS	
18	2 PCS. - 1"x10"x10'-0"	2 PCS. - 1"x10"x10'-0"
19	2 2" ANGLE IRON - 3" LONG FOR BRACING RUNNERS	
20	16 1/2" CARRIAGE BOLTS 4 1/2" LONG	
21	26 1/2" FLAT WASHERS	



DETAIL "A" OF FEED TROUGH

THIS PLAN DEVELOPED BY THE FARM SHOP SECTION OF THE AG. ENG. AND AG. ED. DEPT., V.M.U.

CAPACITY:
APPROX. 50 BU.

COOPERATIVE EXTENSION WORK IN
AGRICULTURE AND HOME ECONOMICS
DEPARTMENT OF AGRICULTURAL ENGINEERING
UNIVERSITY OF MARYLAND
AND
UNITED STATES DEPARTMENT OF AGRICULTURE COOPERATING

CALF CREEP FEEDER

VA. '52 EX. 5768 SHEET 1 OF 1